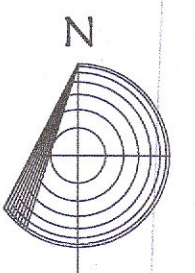


PHASE 13 INDICATIVE LAYOUT



- Street Trees**
Link Streets: 20-25cm girth
Tilia cordata 'Greenspire', *Platanus orientalis* 'Minaret', 'Elegant'
- Local Streets: 18-20cm girth
Acer glutinosa, *Betula pubescens*, *Carpinus betulus*, *Acer camp*
- Small Residential Streets/Homesones: 16-18cm girth
Corylus avellana, *Prunus 'Umineko'*, *Pyrus 'Chanticleer'*, *Magnolia kobus*
- Open Space Trees**
Parkland Trees: 12-14cm - 14-16cm girth
Acer campestre, *Alnus glutinosa*, *Betula pendula*, *Fagus sylvatica* 'Pendula', *Prunus sylvatica*, *Prunus avium*, *Prunus pedis*, *Sorbus aria*, *Sorbus aucuparia*, *Quercus robur*, *Betula nigra*, *Crataegus spp.*, *Salix alba* 'Tristis', *Ulmus 'Loebel'*, *Sorbus aucuparia*, *Corylus avellana*, *Castanea sativa*, *Juglans nigra* (5% of trees to be 20-25cm girth)
- Urban Edge: 15-18cm girth
Acer campestre 'Elegant', *Tilia cordata* 'Greenspire', *Ulmus 'Loebel'*, *Betula pubescens*
- Communal Open Space/Apt/Duplex Trees/Specimen Ornamental**
Standard Trees: 14-16cm girth - to include:
Malus 'Evereste', *Lindendron tulipifera*, *Prunus serotina*, *Magnolia kobus*, *Sorbus 'Joseph Rock'*, *Crataegus 'Paul's carlet'*
Multi-stemmed feature trees: 3-3.5m height, min 3 breaks from base
Amelanchier lamarckii, *Betula utilis 'Jaquemontii'*, *Liquidambar styraciflua* (5% of trees to be 30-35cm girth)
- Rear Garden Trees**
8-10 cm girth
Betula pendula, *Prunus avium*, *Malus 'Evereste'*
- Native Woodland Planting**
B/R 60-120cm (90%) & 8-10cm girth (10%), @ 1 per m²
to include the following species:
Alnus glutinosa, *Betula pendula*, *Betula pubescens*, *Crataegus monogyna*, *Malus sylvestris*, *Quercus robur*, *Prunus avium*, *Acer campestre*, *Prunus spinosa*, *Salix spp.*, *Prunus padus*, *Corylus avellana*, *Pinus sylvestris*

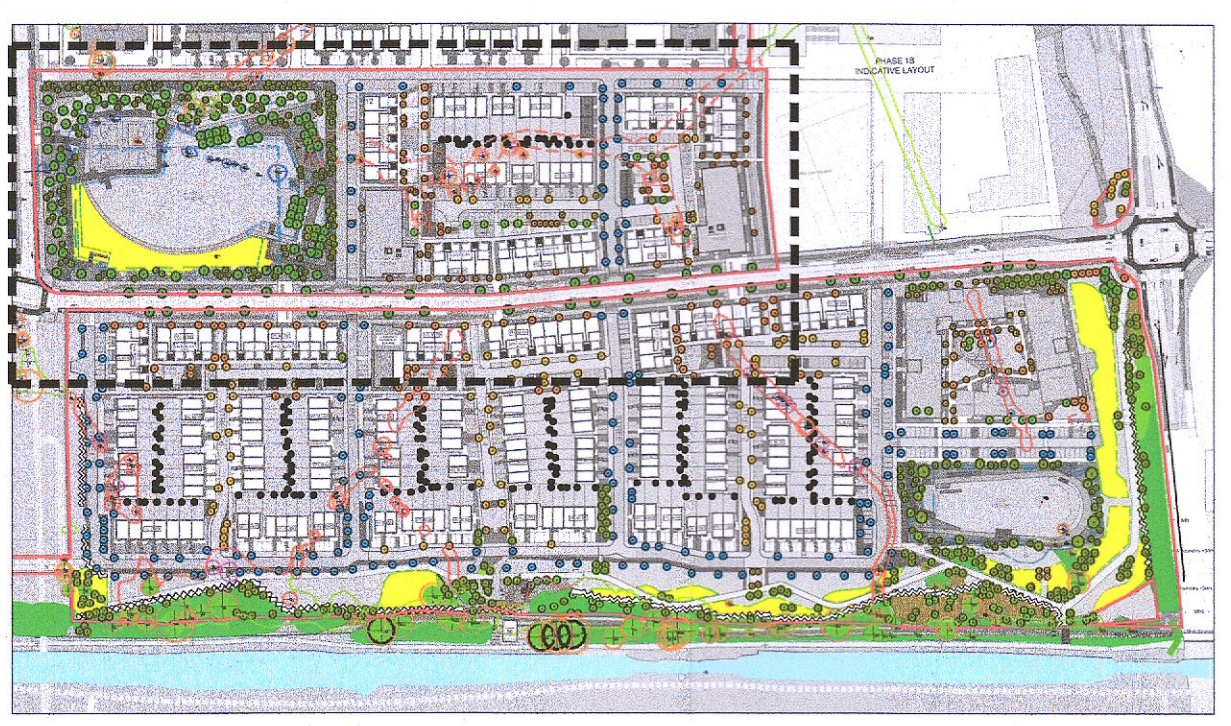
- Street/Public Realm Planting**
- Container-Grown Shrubs 2ltr min @ 5 per m². To include the following:
Lavandula 'Hidocote', *Hydrangea sp.*, *Sarcococca sp.*, *Polysichum sp.*, *Dryopteris sp.*, *Erica sp.*, *Luzula sp.*, *Carex oshimensis 'Evergold'*, *Hypericum 'Hidocote'*, *Mahonia aquifolium*, *Rosmarinus officinalis*, *Lonicera pileata*, *Vincetoxicum 'Hidocote'*, *Hedera helix*, *Viburnum opulus*, *Ajuga reptans*, *Liriodendron muscari*, *Lonicera periclymenum*, *Molinia caerulea*, *Hebeboris niger*, *Heuchera maxima*, *Liberia formosa*
Hedge Species:
Native privet (50%) Other Native Hedgerow species as per below
- Open Space Planting (within Canal Park)**
- Container-Grown Shrubs 2ltr min @ 4 per m². To include:
Sarcococca humilis, *Hypericum 'Hidocote'*, *Mahonia aquifolium*, *Rosmarinus officinalis*, *Viburnum davidii*, *Viburnum opulus*, *Salix aurita*, *Salix caprea*, *Rosa canina*, *Rosa pimpinellifolia*, *Euonymus europaeus*. To include species and varieties within the All-Ireland Pollinator Plan.
- Front Garden Planting**
- 75% Shrub, 25% Perennial, @ 5 per m². Container Grown, 2ltr
Low maintenance planting to include species from the above list of shrubs.
- Residential Hedge Planting**
- B/R, min 60-80cm height
- Native Hedge Mix (50% *Ligustrum vulgare*, 50% *Ilex aquifolium*)
- Open Space Native Hedge**
Double-staggered, Bare-root, 60-120cm
To include: *Crataegus monogyna*, *Corylus avellana*, *Euonymus europaeus*, *Ilex aquifolium*, *Lonicera periclymenum*, *Viburnum opulus*, *Ilex spp.*, *Prunus avium*, *Prunus spinosa*, *Rosa canina*.
- Garden/Amenity Lawn**
Coburns Utility/Play Grass Seed Mix or similar and approved
200mm topsoil depth
- Planted Swale** - to include the following species:
Filipendula vulgaris, *Luzula sylvatica*, *Polystrichum setiferum*, *Deschampsia cespitosa*, *Juncus effusus*, *Primula vulgaris*, *Molinia caerulea*
- Native Meadow Grass**
Native Species in consultation with Project Ecologist

- Asphalt Roadway**
with in-situ concrete kerbs (to Engineer's specification)
- Public Footpaths**
In-situ concrete, Brushed Finish (to Engineer's specification)
- Public Footpaths/Seating Spaces - Apartments**
PC Concrete Block
- Footpaths - Open Space**
Permeable Asphalt
- Side Paths - Rear Gardens**
In-situ concrete, Brushed Finish (to Engineer's specification)
- Cycleway**
Coloured Asphalt
- Car Parking Spaces - off curtilage**
Permeable PC Concrete Block
- Car Parking Spaces - on curtilage**
Permeable PC Concrete Block
- HomeZone & Raised Table**
Coloured Asphalt
- Paving - Entrance to Houses**
Permeable PC Concrete Paving Blocks

- Paving - Rear Garden terraces**
Permeable PC Concrete Paving Flags
- Play Area Surface**
Grass Safety Matting (in Detention Basins) & Play Bark mulch suitable for play areas
- Reinforced Grass surfacing to Fire Tender Route**
- Self-binding Gravel**
to seating spaces in open spaces
- Buff colour, 10mm and down
- Retaining Walls/Raised Planters (+450mm - 600mm)**
Rendered Concrete Block with PC Concrete Coping
- Seating**
Simple, robust street furniture with arm and backrests
- Galvanised Steel frame, Composite Timber Seating
- Outdoor Bicycle Stands**
Standard Sheffield Bicycle Stands or similar and approved
- Below Ground Attenuation Tank**
See Engineer's drawings for more information.
- Attenuation Basin**
- Top & Bottom of proposed slope
- Site Boundary**
- Lighting Columns (with 5m exclusion Zone)**
- see Lighting Engineers drawings for details

- BOUNDARIES**
- Boundary between Residential and Public Realm**
Rendered Concrete Block Wall with PC concrete coping & Brick Piers
+2.0m high
- Rear Garden Boundary**
Timber Panel with Concrete Post
+1.8m high
- Apartment Courtyard Railing**
Steel Bar Railing, Powder-coated, Colour: Black
+1.8m high
- Residential Heighting**
800mm width
- B/R, min 60-80cm height
- Native Hedge (50% *Ligustrum vulgare*)

NOTES:
1. This drawing is intended to show landscape architectural proposals only. Please refer to Architects and Engineers drawings for relevant details of buildings, structures, roads, parking, etc.
2. The copyright of this drawing is vested with Murray & Associates. This drawing may not be copied or reproduced without written consent.
3. All materials referred to on this drawing - including plant species - are indicative and subject to change following detailed site investigation. Significant changes, if any are required, will be referred to the relevant authority for agreement.
4. This drawing is not suitable for use for construction purposes.
5. Discrepancies to be referred to Murray & Associates for clarification.



murray & associates
landscape architecture

REV	DATE	REVISION	DRAWN	CHECKED
E	09/06/22	Updated drawing	IS/FT	MB
D	11/11/21	Site Revisions & CL Park	JB	JB
C	12/10/21	Site Revisions	JB	JB
B	15/10/21	Site Revisions	JB	JB
A	17/09/21	Site Revisions	JB	JB
0	13/07/21	Original	JB	JB

CIENT	Cain Homes Properties Ltd
PROJECT TITLE	Clonburris Phase 1A
SHEET TITLE	Landscape Masterplan 03
SHEET NO.	1738_PL_P_06
SCALE	1:500
STAGE	Planning
SHEET DATE	09/06/22
SHEET SIZE	A1
REVISION	E
DATE	09/06/22