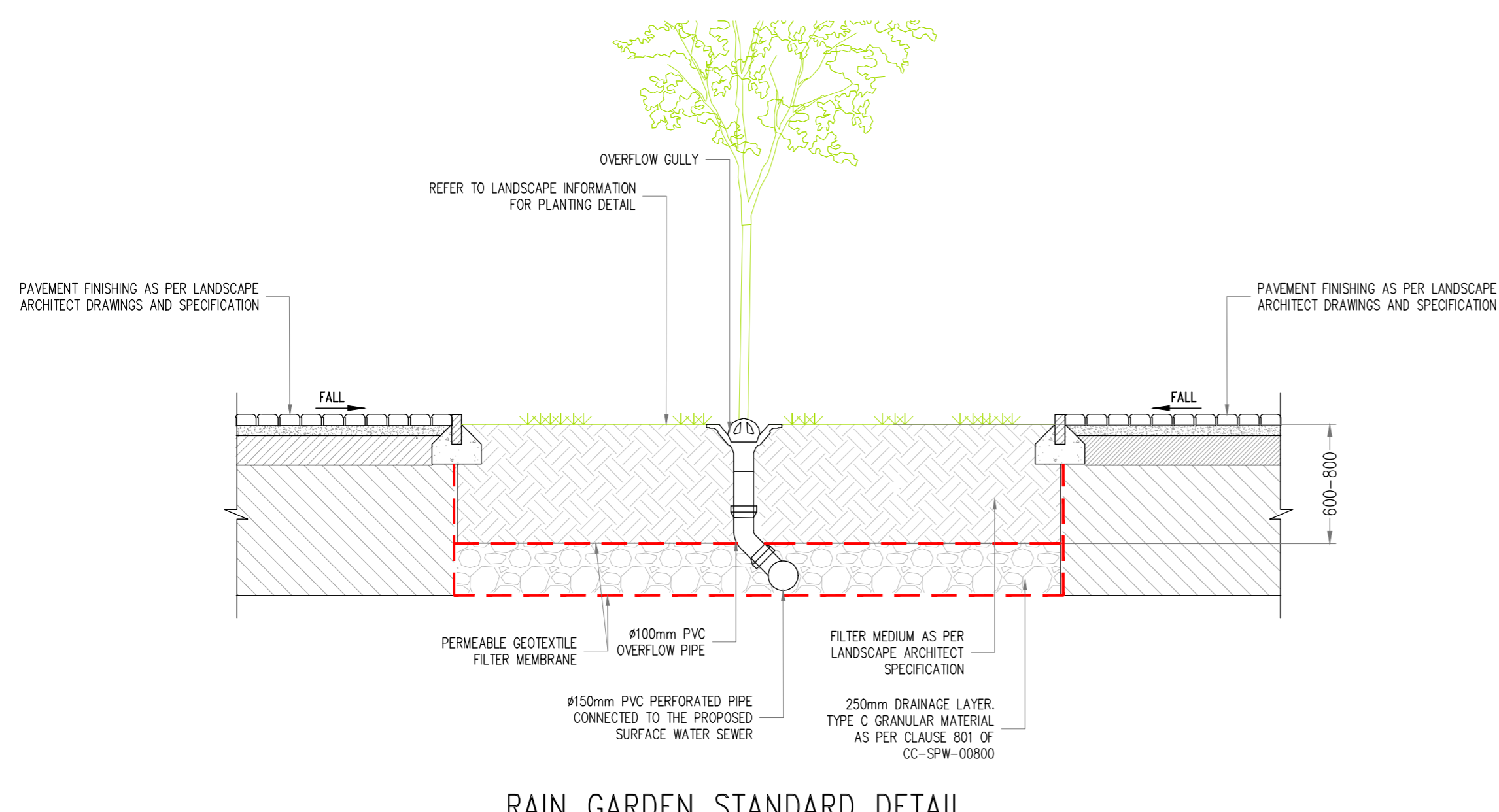


LEGEND:

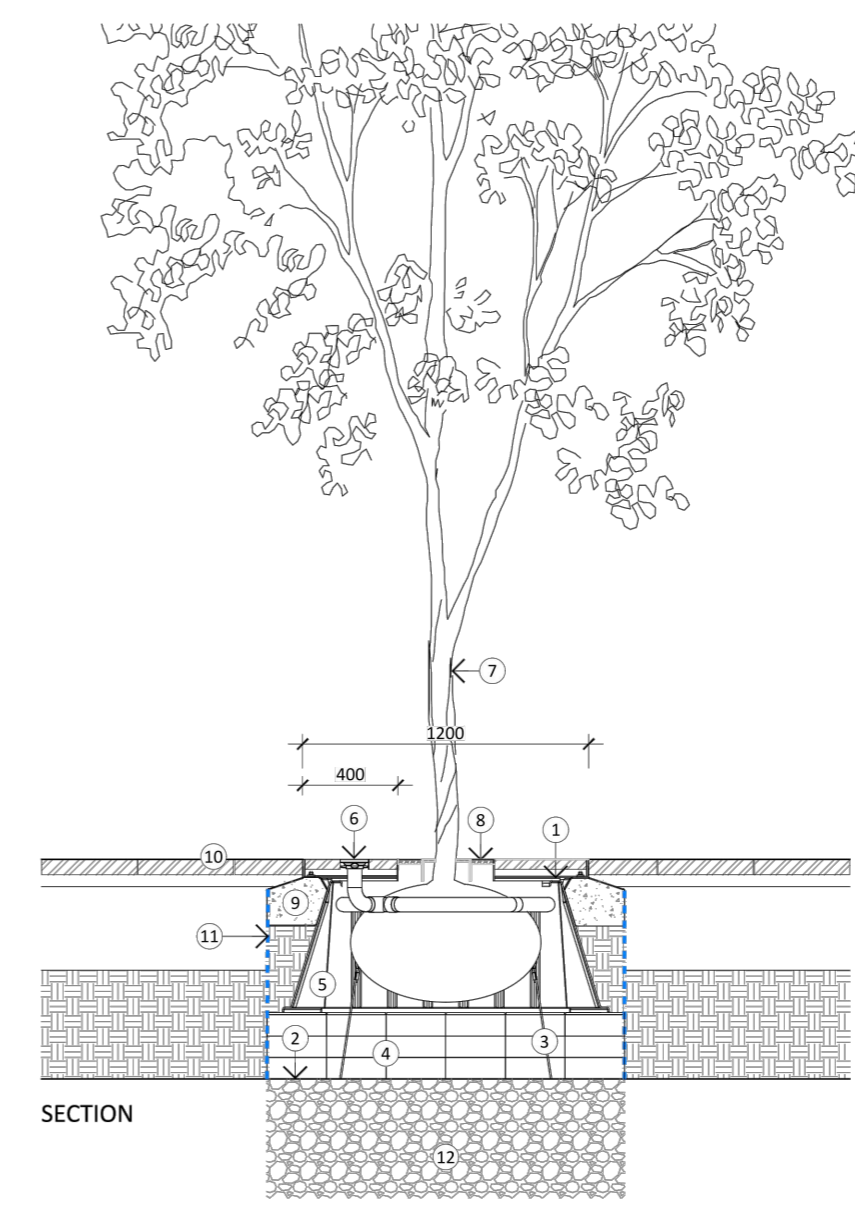
- SITE BOUNDARY —
- PROPOSED EXTENSIVE GREEN ROOF, TOTAL AREA: 1,468m² ■
- PROPOSED RAIN GARDEN ■
- PROPOSED PERMEABLE PAVING, TOTAL AREA: 1,964m² ■
- PROPOSED ENGINEERED TREE PIT STP



PROPOSED SUDS LAYOUT AND DETAILS.
SCALE 1:500



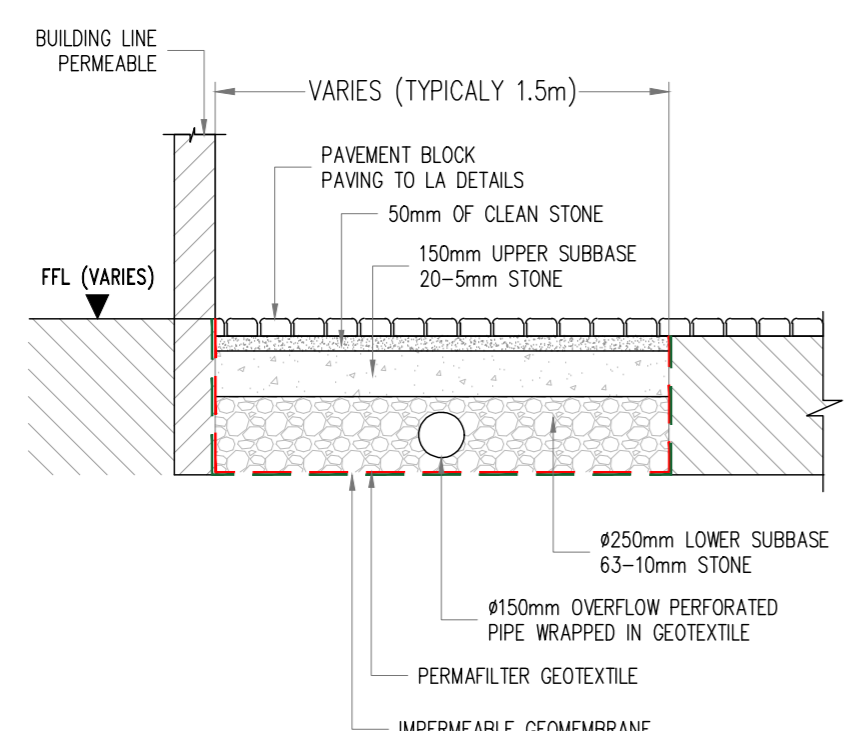
RAIN GARDEN STANDARD DETAIL



TREE PIT DETAIL.

- LEGEND:**
1. Tree grille support frame set on concrete support 1200x1200 Castle Tree Grille 12B, Twin Tray, with Arboresin Bound Gravel infill. Install with Rootrain Precinct Irrigation Inlet. Ensure drainage hole provided in base of infill Grille.
 2. Twinwall Geonet laid over root cells.
 3. Strap anchor root ball guying system C/W round anchors.
 4. Rootcell Structure - 3 modules deep x6 modules square. Loaded with multipurpose topsoil to BS 3882 (3:1 topsoil compost mix with Omocote 89 slow release fertilizer 40g/m²). Area around rootball within root director to be backfilled with multipurpose topsoil to BS 3882.
 5. Root director
 6. Irrigation system with 100x100mm cast aluminum inlet with lockable lid.
 7. Tree as specified set vertical with 20mm dia. VC collar to protect trunk and retain bound gravel infill. Thin layer of resin bound gravel to be provided to tree trunk to allow future growth.
 8. 20mm depth Arboresin surfacing on loose stone
 9. Mass concrete surround to Engineer's detail.
 10. Adjacent paving, refer to hardworks plan.
 11. Root barrier, where adjacent to services.
 12. Gravel attenuation layer 750 - 1000mm deep.

NOTE:
REFER TO LANDSCAPE ARCHITECT DRAWINGS FOR DETAILS.



PERMEABLE PAVEMENT STANDARD DETAIL

PLANNING DRAWING.
NOT FOR CONSTRUCTION.
ALL LEVELS GIVEN ARE RELATIVE TO ORDNANCE DATUM.
THIS DRAWING HAS BEEN ISSUED FOR INFORMATION PURPOSES ONLY AND MUST NOT BE USED FOR CONSTRUCTION UNDER ANY CIRCUMSTANCES

Q003

NOTES

1. For setting out refer to Architect's drawings.
2. This drawing to be read in conjunction with all other Architectural and Engineering drawings and all other relevant drawings and Specifications.
3. DO NOT SCALE THIS DRAWING. Use figured dimensions only.
4. No part of this document may be reproduced or transmitted in any form or stored in any retrieval system of any nature without the written permission as copyright holder except as agreed for use on the project for which the document was originally issued.
5. Ordnance Survey Ireland Licence Number EN 0074022

Rev. No.	Date	REVISION NOTE	Drn. By	Chkd. By

Architect	Henry J. Lyons			
Project	Proposed Development On The Belgard Square East.			
Title	Proposed SUDS Layout And Details			
Dwg. No.	Q003-CSC-ZZ-XX-DR-C-0026			
Date	Drn. by	Chkd. by	Apprd. by	Scale
May 2022	IK	FDB	NB	As Shown @ A1

CS Consulting Group
DUBLIN | LONDON | LIMERICK

Head Office
19-22 Dame Street, Dublin 2.
T: +353 (0)1 5490863
e: info@csconsulting.ie
w: www.csconsulting.ie

Quality Environment I.S. EN ISO 9001:2008
Energy I.S. EN ISO 14001:2004
NSAI Certified Health & Safety I.S. EN ISO 50001:2011 OHSAS 18001:2007