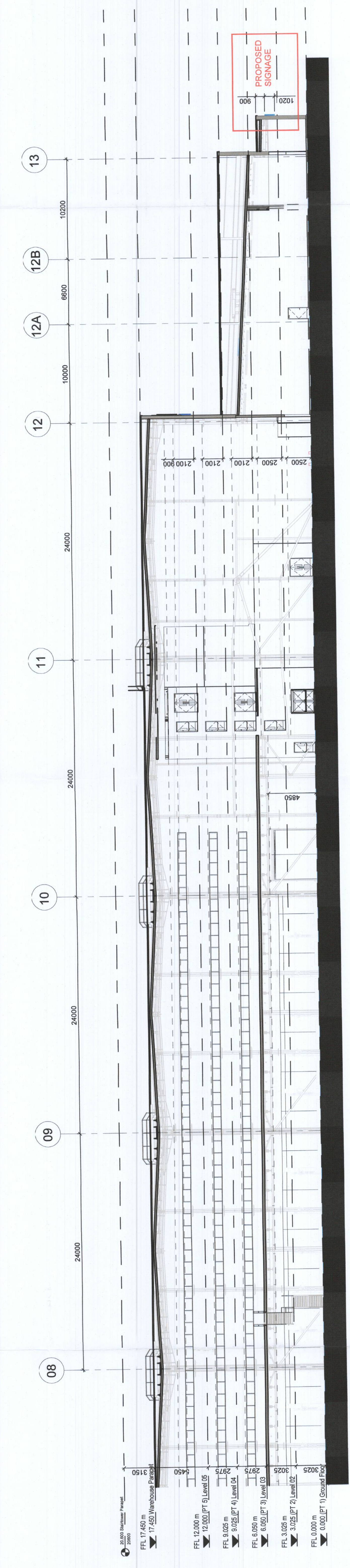
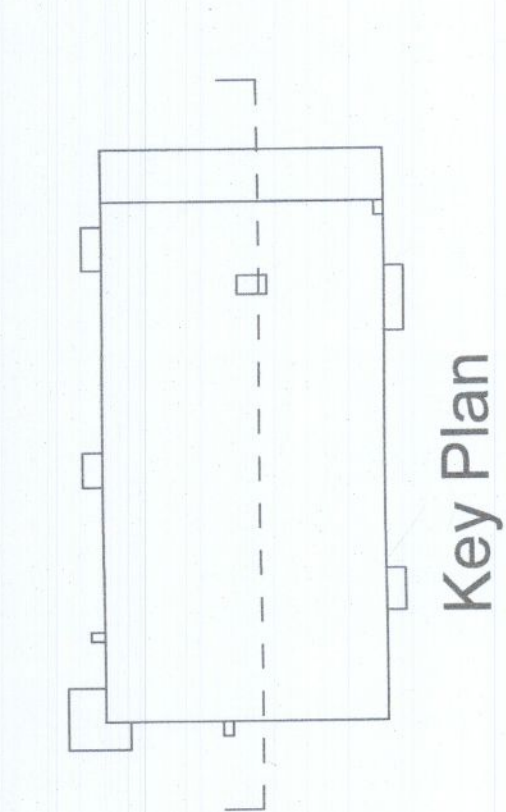


1 Partial Longitudinal Section 1/2  
1: 200



2 Partial Longitudinal Section 2/2  
1: 200



**PROPOSED**

**JSA Architects**  
 CHARTERED ARCHITECTS, 10 BODLESTOWN AVENUE,  
 BLACKROCK, CO. DUBLIN. TEL: (01) 2852661 FAX: (01) 2853143  
 E-MAIL: jsa@jars.ie WEB: www.jars.ie

Client: MLIU Dublin 2 Limited  
 Project: FADONNELL BUSINESS PARK - UNIT E  
 Discipline: PROPOSED ARCHITECTURAL SECTION  
 Date: 02.06.2022 Sheet: A0 Scale: 1:200 Rev: JSA  
 Job No: 2520 S056-PLANNING Date Plotted: 24.06.2022



Revision No.	Description	Date
REV 01		
REV 02		
REV 03		
REV 04		
REV 05		
REV 06		
REV 07		
REV 08		
REV 09		
REV 10		
REV 11		
REV 12		
REV 13		
REV 14		
REV 15		
REV 16		
REV 17		
REV 18		
REV 19		
REV 20		
REV 21		
REV 22		
REV 23		
REV 24		
REV 25		
REV 26		
REV 27		
REV 28		
REV 29		
REV 30		
REV 31		
REV 32		
REV 33		
REV 34		
REV 35		
REV 36		
REV 37		
REV 38		
REV 39		
REV 40		
REV 41		
REV 42		
REV 43		
REV 44		
REV 45		
REV 46		
REV 47		
REV 48		
REV 49		
REV 50		
REV 51		
REV 52		
REV 53		
REV 54		
REV 55		
REV 56		
REV 57		
REV 58		
REV 59		
REV 60		
REV 61		
REV 62		
REV 63		
REV 64		
REV 65		
REV 66		
REV 67		
REV 68		
REV 69		
REV 70		
REV 71		
REV 72		
REV 73		
REV 74		
REV 75		
REV 76		
REV 77		
REV 78		
REV 79		
REV 80		
REV 81		
REV 82		
REV 83		
REV 84		
REV 85		
REV 86		
REV 87		
REV 88		
REV 89		
REV 90		
REV 91		
REV 92		
REV 93		
REV 94		
REV 95		
REV 96		
REV 97		
REV 98		
REV 99		
REV 100		