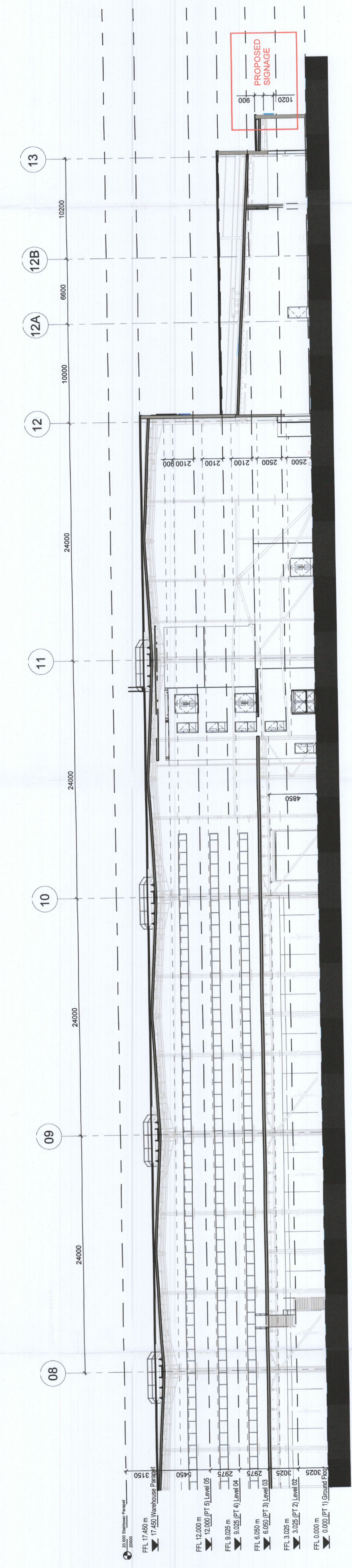


Partial Longitudinal Section 1/2
1: 200



Partial Longitudinal Section 2/2
1: 200

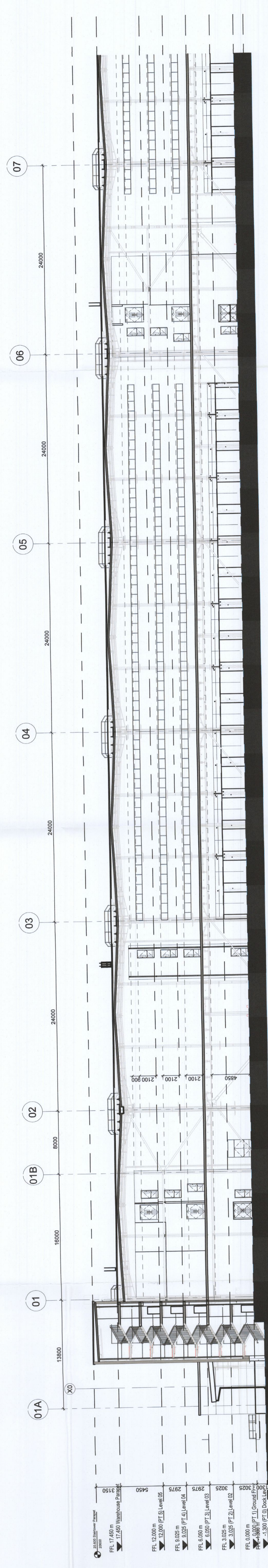
PROPOSED

JSA Architects
 CHARTERED ARCHITECTS, 17 BURGESS ROAD, WINDYBUSH, DURBAN, KZN, SOUTH AFRICA
 031 201 1111 | www.jsa.co.za

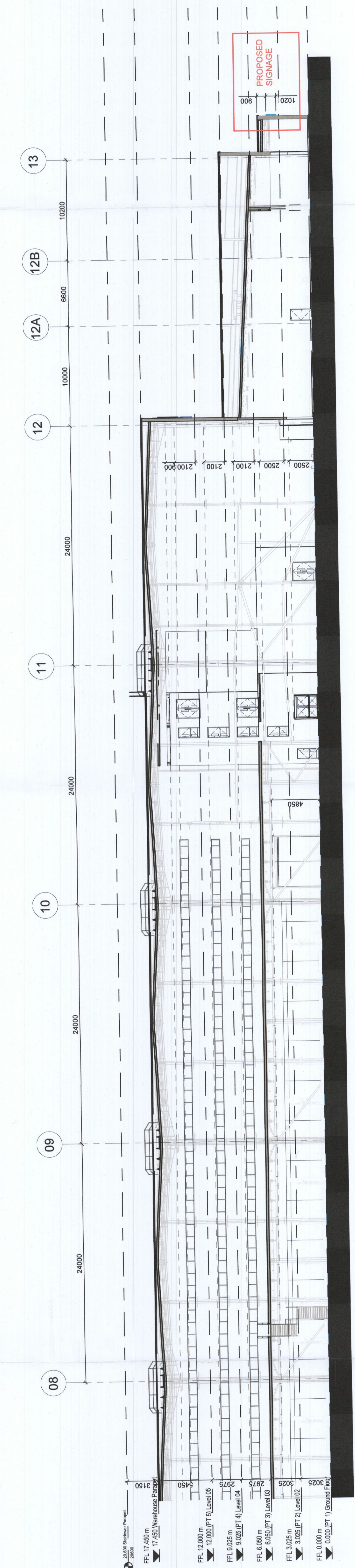
Client: VEDD Duffin 2 Limited
 Project: BALDOWNE, BUSINESS PARK - UNIT E
 Description: PROPOSED WAREHOUSE SECTION
 Date: 02.06.2022
 Sheet: A01
 Scale: 1:200
 Rev: JSA
 Stage: PLANNING
 Draw No: PJA-202



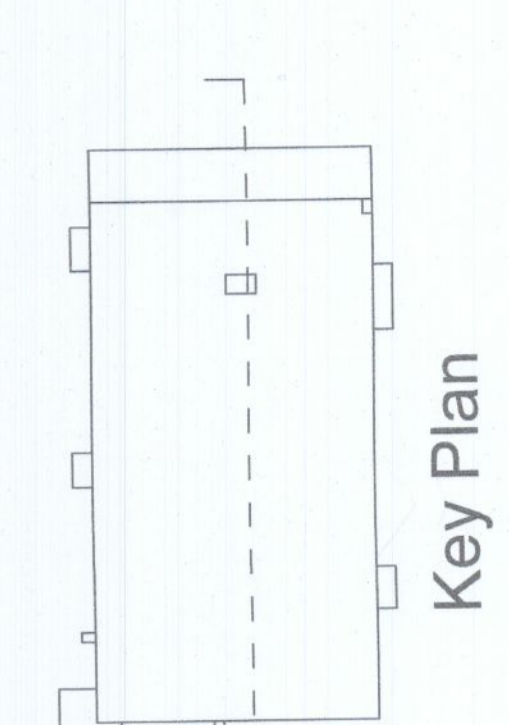
Revision	Break Date	Description
REV. 01		
REV. 02		
REV. 03		
REV. 04		
REV. 05		
REV. 06		
REV. 07		
REV. 08		
REV. 09		
REV. 10		
REV. 11		
REV. 12		
REV. 13		
REV. 14		
REV. 15		
REV. 16		
REV. 17		
REV. 18		
REV. 19		
REV. 20		



Partial Longitudinal Section 1/2
1: 200



Partial Longitudinal Section 2/2
1: 200



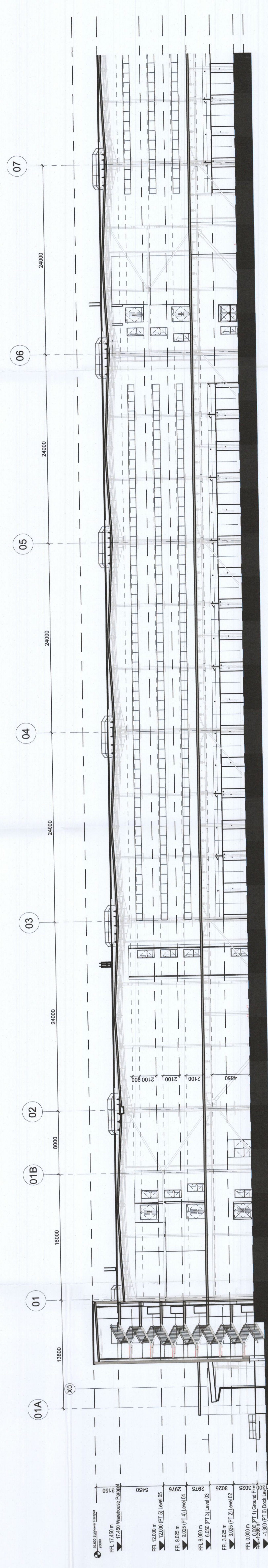
PROPOSED

JSA Architects
 CHARTERED ARCHITECTS, 10 BUSINESS AVENUE,
 BUCKLEBOURNE, VIC 3083
 T: (03) 9488 8888 F: (03) 9488 8889
 E: info@jsa.com.au W: www.jsa.com.au

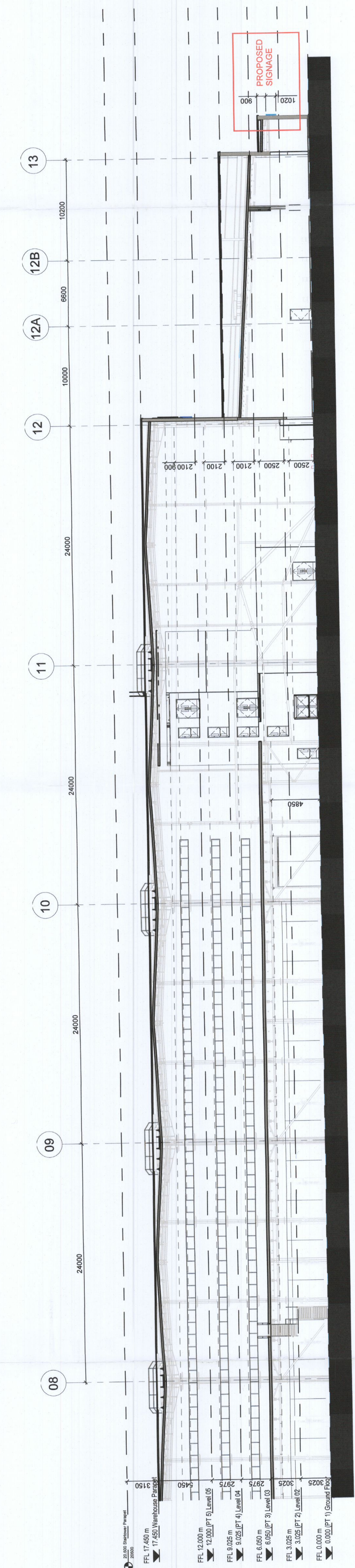
Client: VEDD Duffin Z Limited
 Project: BALDWIN, BUSINESS PARK - UNIT E
 Description: PROPOSED WAREHOUSE SECTION
 Date: 02.06.2022 Sheet: A01 Page: 1/200 By: JSA
 Scale: PLANNING Job No: PJA 202



Revision	Breakdown	Description
REV. 01	REV. 01	
REV. 02	REV. 02	
REV. 03	REV. 03	
REV. 04	REV. 04	
REV. 05	REV. 05	
REV. 06	REV. 06	
REV. 07	REV. 07	
REV. 08	REV. 08	
REV. 09	REV. 09	
REV. 10	REV. 10	
REV. 11	REV. 11	
REV. 12	REV. 12	
REV. 13	REV. 13	
REV. 14	REV. 14	
REV. 15	REV. 15	
REV. 16	REV. 16	
REV. 17	REV. 17	
REV. 18	REV. 18	
REV. 19	REV. 19	
REV. 20	REV. 20	



Partial Longitudinal Section 1/2
1: 1:200



Partial Longitudinal Section 2/2
1: 1:200

PROPOSED

JSA Architects
 CHARTERED ARCHITECTS, 10 BURGESS ROAD, WINDYBUSH, DURBAN, KZN 4013, SOUTH AFRICA
 TEL: +27 31 201 1111 | FAX: +27 31 201 1112 | WWW.JSA.AZ

Client: MCD Duffin 2 Limited
 Project: BALDOWNE, BUSINESS PARK - UNIT E
 Description: PROPOSED WAREHOUSE SECTION
 Date: 02.06.2022
 Sheet: A01
 Scale: 1:200
 Rev: JSA
 Stage: PLANNING
 Draw No: PJA-202



Revision	Break Date	Description
REV. 01		
REV. 02		
REV. 03		
REV. 04		
REV. 05		
REV. 06		
REV. 07		
REV. 08		
REV. 09		
REV. 10		
REV. 11		
REV. 12		
REV. 13		
REV. 14		
REV. 15		
REV. 16		
REV. 17		
REV. 18		
REV. 19		
REV. 20		