

PREVIOUSLY APPROVED



STATUS :

PLANNING

THIS DRAWING HAS BEEN PREPARED SOLELY FOR THE PURPOSE OF PLANNING PERMISSON. THIS DRAWING IS NOT TO BE RELIED UPON FOR CONSTRUCTION AND NO GUARANTEE IS GIVEN AS TO ITS SUITABILITY FOR CONSTRUCTION.

FINISHES LEGEND

- 01 Brickwork to Architect's approval.
- 02 Pressed Metal Cladding to Roof/ Penthouse
- 03 External grade aluminium windows/ frames with clear glazing, to selected colour to Architect's approval.
- 04 External grade aluminium windows/ frames with Opaque Glazing, to selected colour to Architect's approval.
- 05 External grade aluminium windows/ frames with Grey Glass Glazing, to Architect's approval.
- 06 Spandrel Panel to Glazing at Floor levels.
- 07 External grade timber/Aluminium Doors / Frames with clear galzing, to selected colour.
- 08 Painted Napped Render Finish
- 09 Pressed Aluminium Metal Cladding
- 10 Precast RC Cills
- 11 Precast RC Parapet Capping
- 12 Opaque Glazed Balustrade
- 13 Raised Letter Signage / Panel
- 14 Painted Hardwood Doors to Car Park Access
- 15 Opaque Glazed Screen

| REV. | DATE | BY | DESCRIPTION | CHKD |
|------|----------|----|---------------------|------|
| A | 12.05.22 | DM | ISSUED FOR PLANNING | DM |

NOTE © This drawing is copyright. Figured dimensions only to be taken from this drawing. All dimensions to be checked on site. Architects to be informed immediately of any discrepancies before work proceeds.

DOUGLAS WALLACE | CONSULTANTS

St. Kevins Female School . 1 Grantham Street . Dublin 8
 T +353-1-478-7500 F +353-1-478-7590 E info@douglaswallace.com

CLIENTS CARL PROPERTIES LIMITED

PROJECT PROPOSED RESIDENTIAL DEVELOPMENT AT 21 WHITEHALL ROAD WEST, DUBLIN 12

TITLE PREVIOUSLY APPROVED - PROPOSED FRONT (EAST) ELEVATION

| PROJ. NO. | DRG. NO. | REVISION | |
|-----------|------------|------------|-------------|
| 5368 | PL - 500 | A | |
| DRAWN | SCALE | CHECKED BY | DATE |
| DM | 1:100 @ A3 | DM | APRIL/ 2022 |

01 PROPOSED FRONT ELEVATION
 ELEVATION TO WHITEHALL ROAD WEST STREETSCAPE
 1:100 @ A3

— = EXTENTS OF PLANNING APPLICATION SITE

PREVIOUSLY APPROVED



STATUS :

PLANNING

THIS DRAWING HAS BEEN PREPARED SOLELY FOR THE PURPOSE OF PLANNING PERMISSION. THIS DRAWING IS NOT TO BE RELIED UPON FOR CONSTRUCTION AND NO GUARANTEE IS GIVEN AS TO ITS SUITABILITY FOR CONSTRUCTION.

FINISHES LEGEND

- 01 Brickwork to Architect's approval.
- 02 Pressed Metal Cladding to Roof/ Penthouse
- 03 External grade aluminium windows/ frames with clear glazing, to selected colour to Architect's approval.
- 04 External grade aluminium windows/ frames with Opaque Glazing, to selected colour to Architect's approval.
- 05 External grade aluminium windows/ frames with Grey Glass Glazing, to Architect's approval.
- 06 Spandrel Panel to Glazing at Floor levels.
- 07 External grade timber/Aluminium Doors / Frames with clear galzing, to selected colour.
- 08 Painted Napped Render Finish
- 09 Pressed Aluminium Metal Cladding
- 10 Precast RC Cills
- 11 Precast RC Parapet Capping
- 12 Opaque Glazed Balustrade
- 13 Raised Letter Signage / Panel
- 14 Pressed Up & Over Metal Doors to Car Park Access
- 15 Opaque Glazed Screen

| REV. | DATE | BY | DESCRIPTION | CHKD |
|------|----------|----|---------------------|------|
| A | 12.05.22 | DM | ISSUED FOR PLANNING | DM |

NOTE © This drawing is copyright. Figured dimensions only to be taken from this drawing. All dimensions to be checked on site. Architects to be informed immediately of any discrepancies before work proceeds.

DOUGLAS WALLACE | CONSULTANTS

St. Kevins Female School . 1 Grantham Street . Dublin 8
 T +353-1-478-7500 F +353-1-478-7590 E info@douglaswallace.com

CLIENTS CARL PROPERTIES LIMITED

PROJECT PROPOSED RESIDENTIAL DEVELOPMENT AT 21 WHITEHALL ROAD WEST, DUBLIN 12

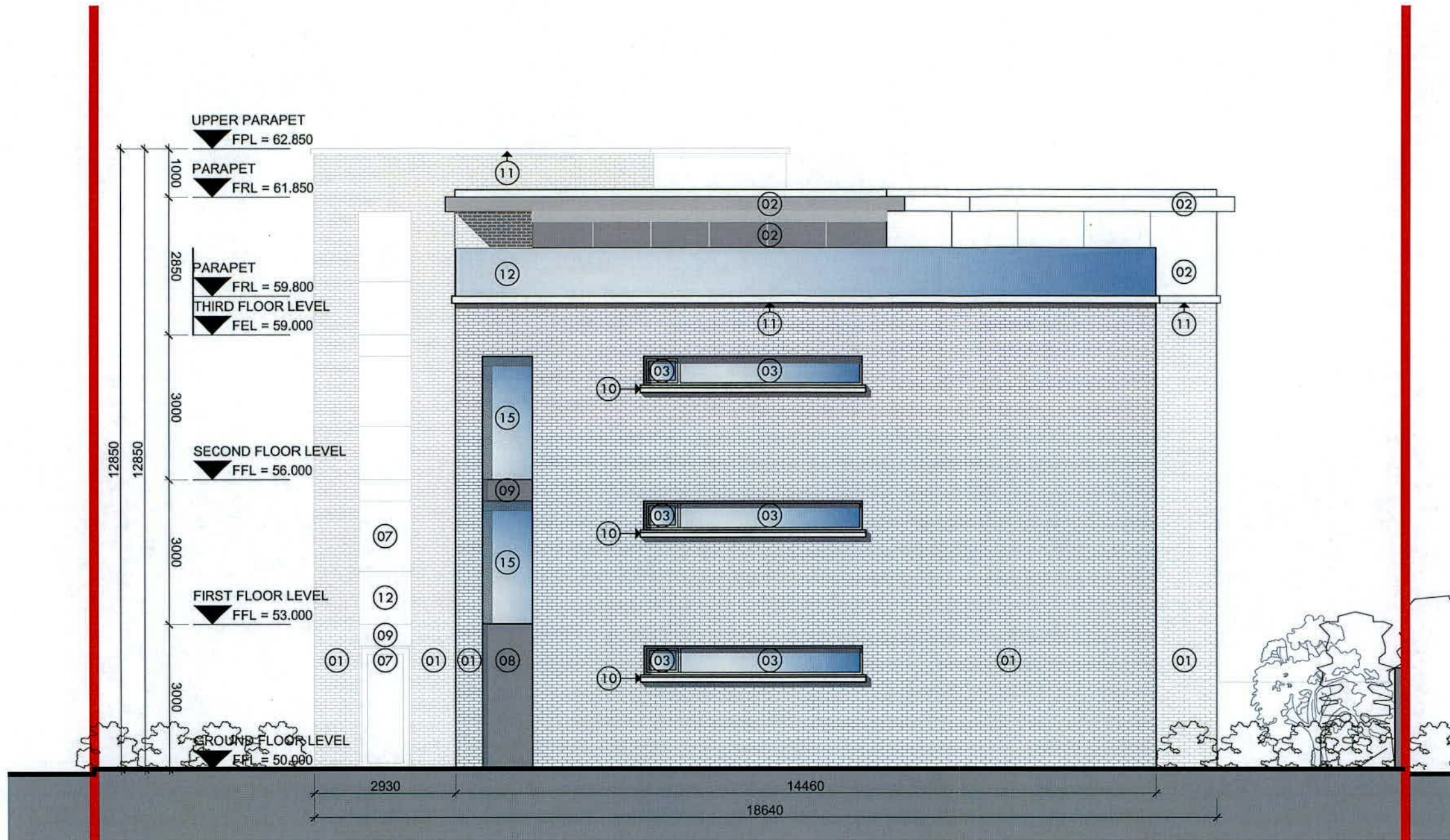
TITLE PREVIOUSLY APPROVED - PROPOSED SOUTH SIDE ELEVATION

| PROJ. NO. | DRG. NO. | REVISION | |
|-----------|------------|------------|-------------|
| 5368 | PL - 502 | A | |
| DRAWN | SCALE | CHECKED BY | DATE |
| DM | 1:100 @ A3 | DM | APRIL/ 2022 |

01 PROPOSED SOUTH SIDE ELEVATION
 ELEVATION TO PUBLIC OPEN SPACE
 1:100 @ A3

— = EXTENTS OF PLANNING APPLICATION SITE

PREVIOUSLY APPROVED



STATUS :

PLANNING

THIS DRAWING HAS BEEN PREPARED SOLELY FOR THE PURPOSE OF PLANNING PERMISSION. THIS DRAWING IS NOT TO BE RELIED UPON FOR CONSTRUCTION AND NO GUARANTEE IS GIVEN AS TO ITS SUITABILITY FOR CONSTRUCTION.

FINISHES LEGEND

- 01 Brickwork to Architect's approval.
- 02 Pressed Metal Cladding to Roof/ Penthouse
- 03 External grade aluminium windows/ frames with clear glazing, to selected colour to Architect's approval.
- 04 External grade aluminium windows/ frames with Opaque Glazing, to selected colour to Architect's approval.
- 05 External grade aluminium windows/ frames with Grey Glass Glazing, to Architect's approval.
- 06 Spandrel Panel to Glazing at Floor levels.
- 07 External grade timber/Aluminium Doors / Frames with clear galzing, to selected colour.
- 08 Painted Napped Render Finish
- 09 Pressed Aluminium Metal Cladding
- 10 Precast RC Cills
- 11 Precast RC Parapet Capping
- 12 Opaque Glazed Balustrade
- 13 Raised Letter Signage / Panel
- 14 Painted Hardwood Doors to Car Park Access
- 15 Opaque Glazed Screen

| REV. | DATE | BY | DESCRIPTION | CHKD |
|------|----------|----|---------------------|------|
| A | 12.05.22 | DM | ISSUED FOR PLANNING | DM |

NOTE © This drawing is copyright. Figured dimensions only to be taken from this drawing. All dimensions to be checked on site. Architects to be informed immediately of any discrepancies before work proceeds.

DOUGLAS WALLACE | CONSULTANTS

St. Kevins Female School . 1 Grantham Street . Dublin 8
T +353-1-478-7500 F +353-1-478-7590 E info@douglaswallace.com

CLIENTS CARL PROPERTIES LIMITED

PROJECT PROPOSED RESIDENTIAL DEVELOPMENT AT 21 WHITEHALL ROAD WEST, DUBLIN 12

TITLE PREVIOUSLY APPROVED - PROPOSED NORTH SIDE ELEVATION

| PROJ NO. | DRG. NO. | REVISION | |
|----------|------------|------------|-------------|
| 5368 | PL - 503 | A | |
| DRAWN | SCALE | CHECKED BY | DATE |
| DM | 1:100 @ A3 | DM | APRIL/ 2022 |

01 PROPOSED NORTH SIDE ELEVATION
1:100 @ A3

— = EXTENTS OF PLANNING APPLICATION SITE

PREVIOUSLY APPROVED



STATUS :

PLANNING

THIS DRAWING HAS BEEN PREPARED SOLELY FOR THE PURPOSE OF PLANNING PERMISSION. THIS DRAWING IS NOT TO BE RELIED UPON FOR CONSTRUCTION AND NO GUARANTEE IS GIVEN AS TO ITS SUITABILITY FOR CONSTRUCTION.

FINISHES LEGEND

- 01 Brickwork to Architect's approval.
- 02 Pressed Metal Cladding to Roof/ Penthouse
- 03 External grade aluminium windows/ frames with clear glazing, to selected colour to Architect's approval.
- 04 External grade aluminium windows/ frames with Opaque Glazing, to selected colour to Architect's approval.
- 05 External grade aluminium windows/ frames with Grey Glass Glazing, to Architect's approval.
- 06 Spandrel Panel to Glazing at Floor levels.
- 07 External grade timber/Aluminium Doors / Frames with clear galzing, to selected colour.
- 08 Painted Napped Render Finish
- 09 Pressed Aluminium Metal Cladding
- 10 Precast RC Cills
- 11 Precast RC Parapet Capping
- 12 Opaque Glazed Balustrade
- 13 Raised Letter Signage / Panel
- 14 Painted Hardwood Doors to Car Park Access
- 15 Opaque Glazed Screen

| REV. | DATE | BY | DESCRIPTION | CHKD |
|------|----------|----|---------------------|------|
| A | 12.05.22 | DM | ISSUED FOR PLANNING | DM |

NOTE © This drawing is copyright. Figured dimensions only to be taken from this drawing. All dimensions to be checked on site. Architects to be informed immediately of any discrepancies before work proceeds.

DOUGLAS WALLACE | CONSULTANTS

St. Kevins Female School . 1 Grantham Street . Dublin 8
 T +353-1-478-7500 F +353-1-478-7590 E info@douglaswallace.com

CLIENTS CARL PROPERTIES LIMITED

PROJECT PROPOSED RESIDENTIAL DEVELOPMENT AT 21 WHITEHALL ROAD WEST, DUBLIN 12

TITLE PREVIOUSLY APPROVED - PROPOSED REAR (WEST) ELEVATION

| PROJ NO. | DRG. NO. | REVISION | |
|----------|------------|------------|-------------|
| 5368 | PL - 501 | A | |
| DRAWN | SCALE | CHECKED BY | DATE |
| DM | 1:100 @ A3 | DM | APRIL/ 2022 |

01 PROPOSED REAR (WEST) ELEVATION
 ELEVATION TO WELLINGTON COURT APARTMENT COMPLEX
 1:100 @ A3

— = EXTENTS OF PLANNING APPLICATION SITE