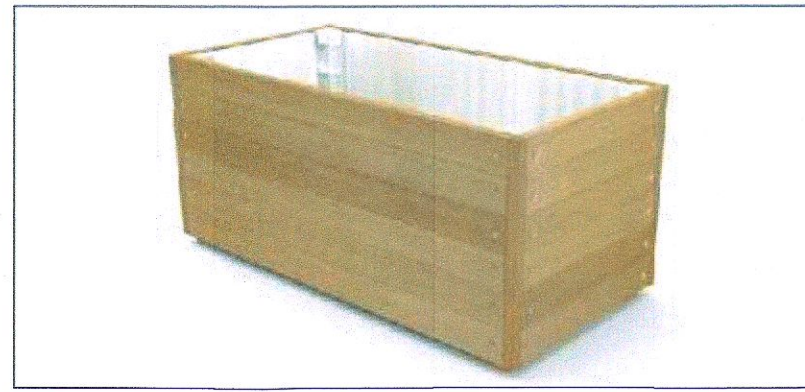
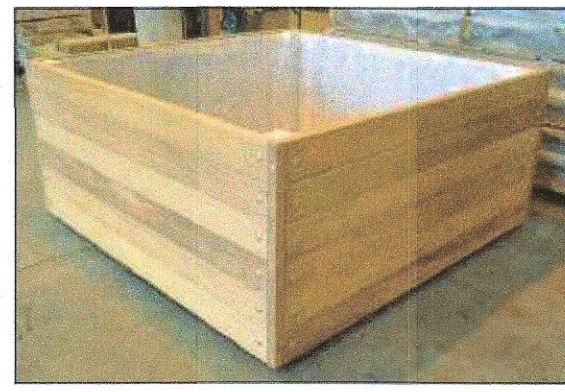


Trees					
Number	Species	Height	Girth	Specification	Density
1	<i>Betula utilis jacquemontii</i>	200-250cm		Multi-Stemmed: Bushy: 3 stems min.: C	Counted

Shrubs					
Number	Species	Height	Specification	Pot Size	Density
1	<i>Aucuba japonica 'Variegata'</i>	60-80cm	Bushy: 5 brks: C	5L	2/m <sup>2</sup>
1	<i>Camellia 'Innovation'</i>	60-80cm	Bushy: 5 brks: C	10L	2/m <sup>2</sup>
6	<i>Choisya ternata</i>	40-50cm	Bushy: 5 brks: C	3L	5/m <sup>2</sup>
24	<i>Euonymus fortunei 'Emerald 'n' Gold'</i>	20-25cm	Bushy: 5 brks: C	3L	5/m <sup>2</sup>
1	<i>Hydrangea macrophylla 'White Wave'</i>	40-60cm	Bushy: 5/7 brks: C	3L	2/m <sup>2</sup>
1	<i>Rhododendron yakushimanum</i>	30-40cm	Bushy: 4/6 brks: C	15L	2/m <sup>2</sup>

Herbaceous					
Number	Species	Height	Specification	Pot Size	Density
2	<i>Bergenia 'Bressingham Ruby'</i>		4 buds: C	3L	2/m <sup>2</sup>
2	<i>Brunnera macrophylla 'Hadspen Cream'</i>		C: 4 buds	3L	2/m <sup>2</sup>
4	<i>Geranium 'Johnson's Blue'</i>		4 buds: C	3L	2/m <sup>2</sup>
24	<i>Sedum spectabile 'Brilliant'</i>		Grade 8/10 :Full Pot	3L	5/m <sup>2</sup>



PLANTERS FOR ILLUSTRATION ONLY



BENCH SEAT FOR ILLUSTRATION

Proposed Shrubs and Tree Planting to be carried out in the first planting season following completion of the site works

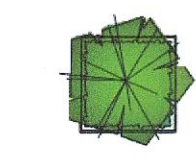
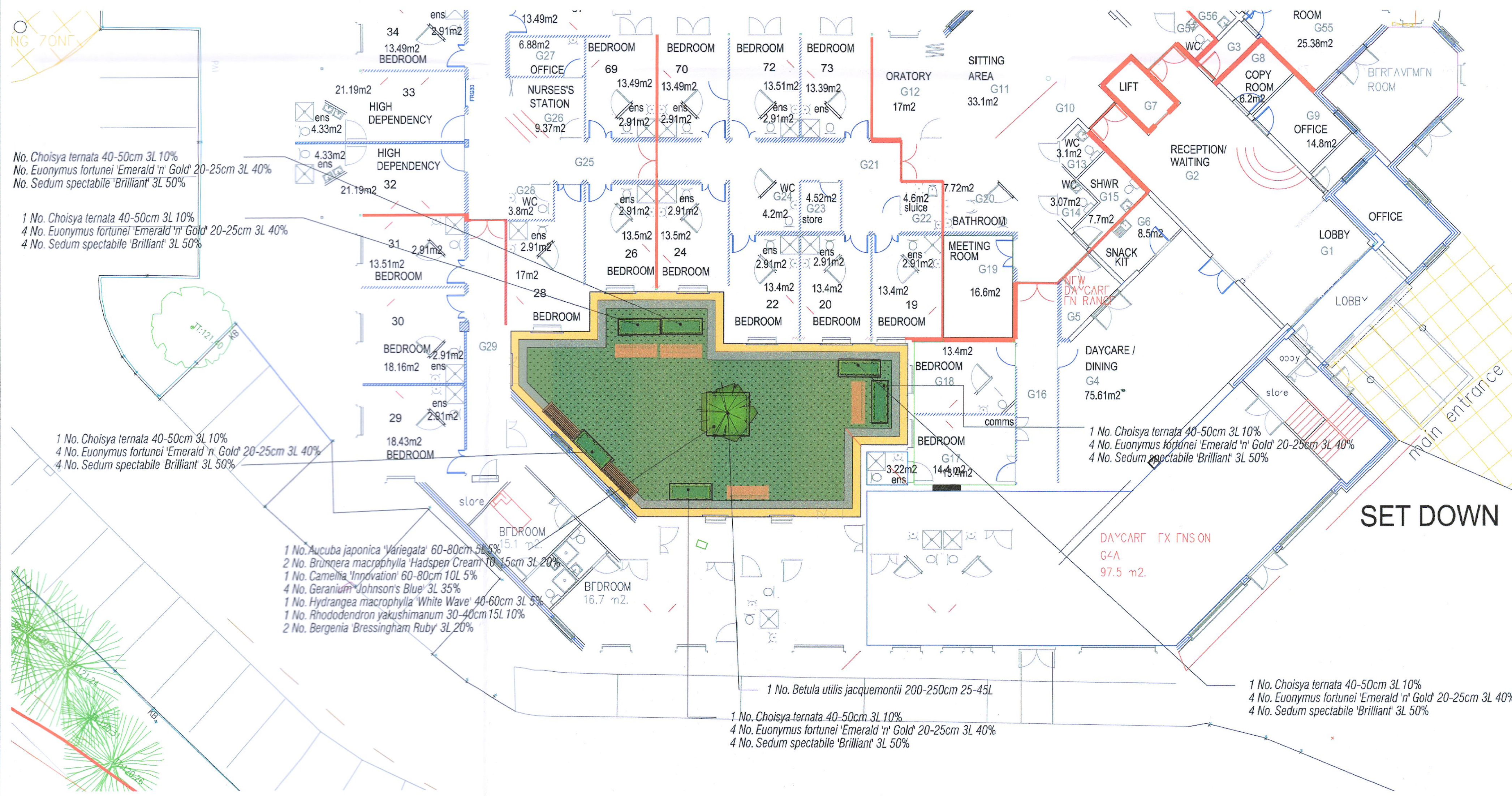
All trees to be in accordance with BS3936: Part 1:1980 and BS4428: 1969(1979) and AMD 938(1972) and BS5837: 1991  
Landscape contractor must be ALCI registered.

Shrubs and Trees that fail to establish during their first growing season must be replaced with healthy stock. All trees to be staked and tied. The planting is to be handed over after the first growing season. Inorganic fertiliser at the rate of 35g/m<sup>2</sup> (Triple Superphosphate) is to be applied at time of planting and organic mulch is to be applied to a depth of 50 mm and dug into soil during planting operations. All areas to be maintained weed free for the first growing season prior to handover.

**Establishment Maintenance**  
All planted areas are to be checked on a monthly basis. Operations to include minor pruning, wind firming tree stake and tie checking, litter lifting. Spot treat all areas of planting with translocating weedkiller to control pernicious weeds. Inorganic fertiliser to be applied as at top dressing rate (70g/m<sup>2</sup> Triple superphosphate). All areas to be mulched with 75mm depth of composted mini bark chips.

**Imported Growing Medium Topsoil** to be to BS3882: 1965 (1978)  
Topsoil to be good quality medium loam, free from all pernicious weeds and roots, with a stone content no more than 20% by dryweight and not greater than 50mm diameter. Mixed with 50% peat free growing medium.

**Planting Programme**  
All planting to be installed in the first planting season after construction phase has been completed [ Bare Root trees and shrubs November to March ] Containerised shrubs and Trees [ September - April];



WOODEN PLANTER 200x75xM WITH SEED MATURE TREE



WOODEN PLANTER 200x75xM WITH MIXED SHRUBS AND HERBACEOUS PLANTS



COURTYARD FINISHED WITH NATURAL TURF



PAVING GRANITE FINISHED GRANITE BLOCKS WITH FLAGSTONES AS EDGING DETAIL



BENCH SEAT

**B. Moore**  
 Chartered Landscape Architect  
 CLIENT  
 KILTIFFER CARE FACILITY EXTENSION  
 LANDSCAPE PROPOSALS  
 1:250    JUNE 2022    10'-01A    BM  
 75 Tuylmore Road, Broughshane, Fallymore, Co. Antrim  
 BT43 7JW    Tel/Fax No. 02825863063  
 The work is protected under COPYRIGHT and any reproduction, copying, publishing, advertising or any other manipulation in whatever form of this work without written consent of the COPYRIGHT owner is prohibited under law.  
 © B. Moore Chartered Landscape Architect