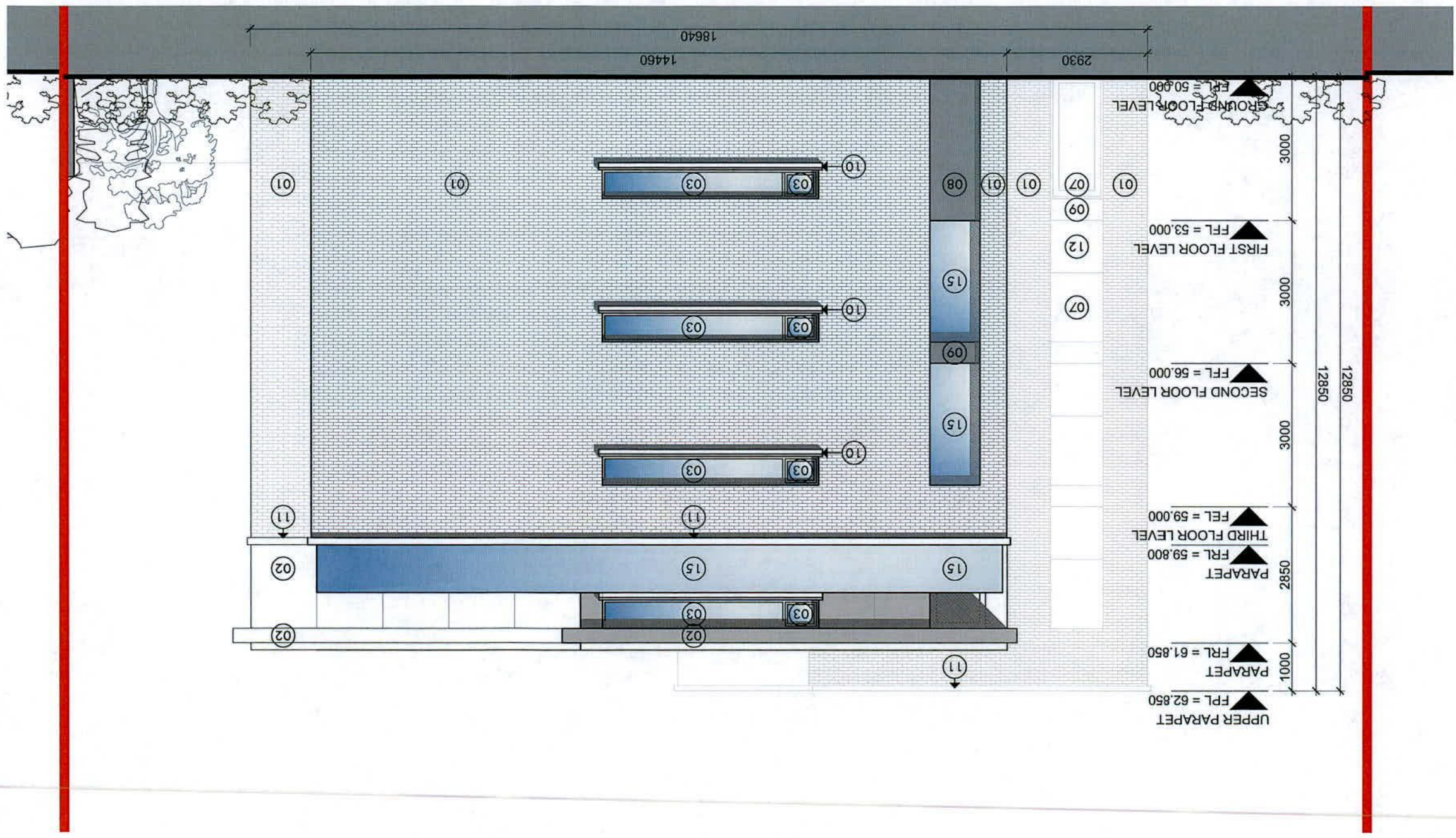


= EXTENTS OF PLANNING APPLICATION SITE

PROPOSED NORTH SIDE ELEVATION 01 1:100 @ A3



DOUGLAS WALLACE | CONSULTANTS
 St. Kevin's Female School, 1 Grantham Street, Dublin 8
 T +353-1-478-7500 F +353-1-478-7590 E info@douglaswallace.com

NOTE: This drawing is copyright. Figured dimensions only to be taken from this drawing. All dimensions to be checked on site. Architects to be informed immediately of any discrepancies before work proceeds.

REV.	DATE	BY	DESCRIPTION	CHKD
A	12.08.22	DM	ISSUED FOR PLANNING	DM

- 01 Brickwork to Architect's approval.
- 02 Pressed Metal Cladding to Roof/ Penthouse
- 03 External grade aluminium windows/ frames with clear glazing, to selected colour to Architect's approval.
- 04 External grade aluminium windows/ frames with Opaque Glazing, to selected colour to Architect's approval.
- 05 External grade aluminium windows/ frames with Grey Glass Glazing, to Architect's approval.
- 06 Spandrel Panel to Glazing at Floor levels.
- 07 External grade timber/Aluminium Doors / Frames with clear glazing, to selected colour.
- 08 Painted Napped Render Finish
- 09 Pressed Aluminium Metal Cladding
- 10 Precast RC Cills
- 11 Precast RC Parapet Capping
- 12 Opaque Glazed Balustrade
- 13 Raised Letter Signage / Panel
- 14 Painted Hardwood Doors to Car Park Access
- 15 Opaque Glazed Screen

FINISHES LEGEND

THIS DRAWING HAS BEEN PREPARED SOLELY FOR THE PURPOSE OF PLANNING PERMISSION. THIS DRAWING IS NOT TO BE REIED UPON FOR CONSTRUCTION AND NO GUARANTEE IS GIVEN AS TO ITS SUITABILITY FOR CONSTRUCTION.

PLANNING

STATUS :

STATUS :

PLANNING

THIS DRAWING HAS BEEN PREPARED SOLELY FOR THE PURPOSE OF PLANNING PERMISSION. THIS DRAWING IS NOT TO BE RELED UPON FOR CONSTRUCTION AND NO GUARANTEE IS GIVEN AS TO ITS SUITABILITY FOR CONSTRUCTION.

FINISHES LEGEND

- 01 Brickwork to Architect's approval.
- 02 Pressed Metal Cladding to Roof/ Penthouse
- 03 External grade aluminium windows/ frames with clear glazing, to selected colour to Architect's approval.
- 04 External grade aluminium windows/ frames with Opaque Glazing, to selected colour to Architect's approval.
- 05 External grade aluminium windows/ frames with Grey Glass Glazing, to Architect's approval.
- 06 Spandrel Panel to Glazing at Floor levels.
- 07 External grade timber/Aluminium Doors / Frames with clear glazing, to selected colour.
- 08 Painted Napped Render Finish
- 09 Pressed Aluminium Metal Cladding
- 10 Precast RC Cills
- 11 Precast RC Parapet Capping
- 12 Opaque Glazed Balustrade
- 13 Raised Letter Signage / Panel
- 14 Pressed Up & Over Metal Doors to Car Park Access
- 15 Opaque Glazed Screen

REV.	DATE	BY	DESCRIPTION	CHKD
A	12/02/22	DM	ISSUED FOR PLANNING	DM

NOTE
© This drawing is copyright. Figured dimensions only to be taken from this drawing. All dimensions to be checked on site. Architects to be informed immediately of any discrepancies before work proceeds.

DOUGLAS WALLACE | CONSULTANTS

St. Kevin's Female School, 1 Grantham Street, Dublin 8
T +353-1-478-7500 F +353-1-478-7590 E info@douglaswallace.com

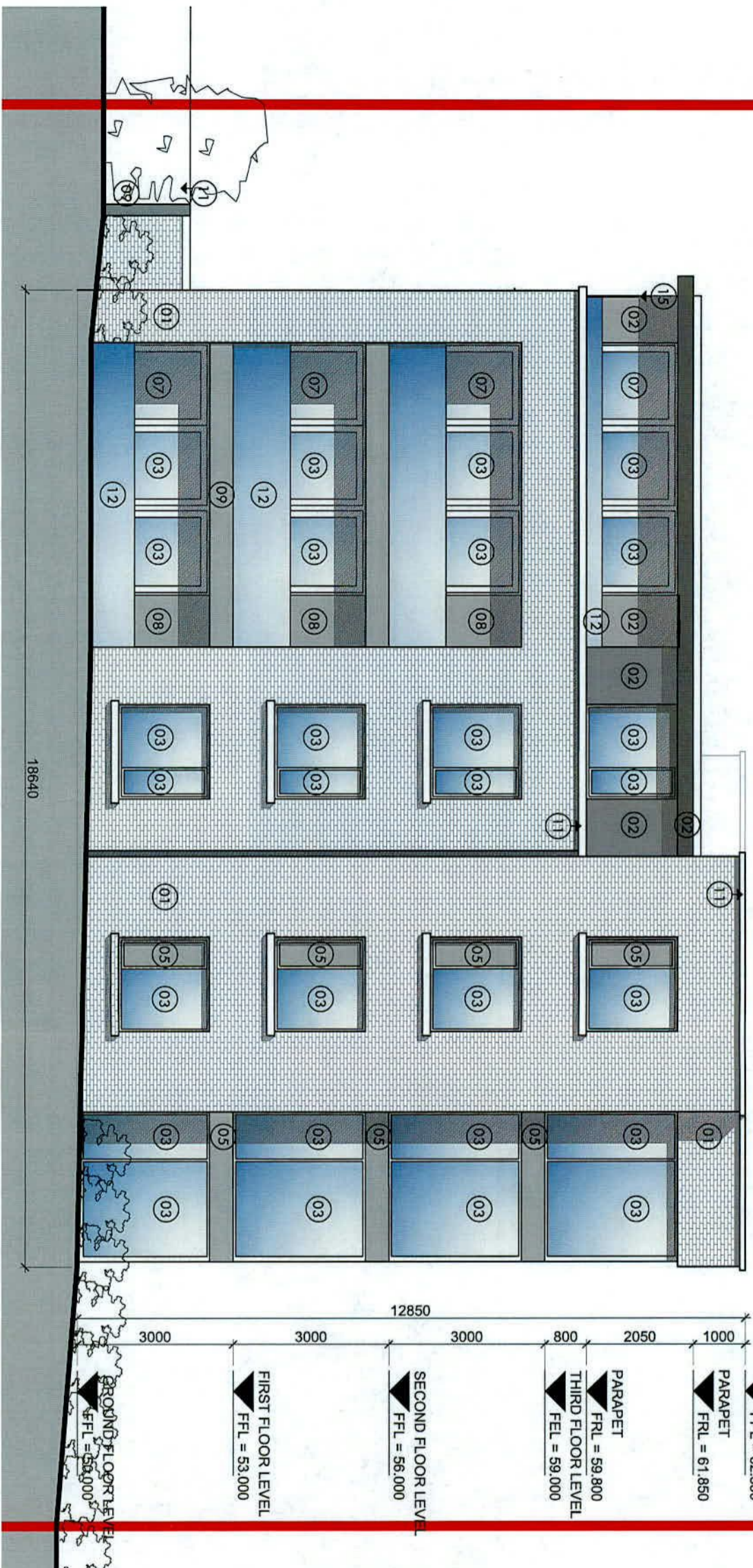
CLIENTS CARL PROPERTIES LIMITED

PROJECT PROPOSED RESIDENTIAL DEVELOPMENT AT 21 WHITEHALL ROAD WEST, DUBLIN 12

TITLE PROPOSED SOUTH SIDE ELEVATION

PROJ. NO.	DRG. NO.	REVISION
5368	PL - 201	A

DRAWN	SCALE	CHECKED BY	DATE
DM	1:100 @ A3	DM	APRIL 2022



01 PROPOSED SOUTH SIDE ELEVATION

ELEVATION TO PUBLIC OPEN SPACE
1:100 @ A3

EXTENTS OF PLANNING APPLICATION SITE

STATUS :

PLANNING

THIS DRAWING HAS BEEN PREPARED SOLELY FOR THE PURPOSE OF PLANNING PERMISSON. THIS DRAWING IS NOT TO BE RELIED UPON FOR CONSTRUCTION AND NO GUARANTEE IS GIVEN AS TO ITS SUITABILITY FOR CONSTRUCTION.

FINISHES LEGEND

- 01 Brickwork to Architect's approval.
- 02 Pressed Metal Cladding to Roof/ Penthouse
- 03 External grade aluminium windows/ frames with clear glazing, to selected colour to Architect's approval.
- 04 External grade aluminium windows/ frames with Opaque Glazing, to selected colour to Architect's approval.
- 05 External grade aluminium windows/ frames with Grey Glass Glazing, to Architect's approval.
- 06 Spandrel Panel to Glazing at Floor levels.
- 07 External grade timber/Aluminium Doors / Frames with clear galzing, to selected colour.
- 08 Painted Napped Render Finish
- 09 Pressed Aluminium Metal Cladding
- 10 Precast RC Cills
- 11 Precast RC Parapet Capping
- 12 Opaque Glazed Balustrade
- 13 Raised Letter Signage / Panel
- 14 Painted Hardwood Doors & Louvres to Car Park
- 15 Opaque Glazed Screen

REV.	DATE	BY	DESCRIPTION	CHKD
A	12.05.22	DM	ISSUED FOR PLANNING	DM

NOTE © This drawing is copyright. Figured dimensions only to be taken from this drawing. All dimensions to be checked on site. Architects to be informed immediately of any discrepancies before work proceeds.

DOUGLAS WALLACE | CONSULTANTS

St. Kevins Female School . 1 Grantham Street . Dublin 8
 T +353-1-478-7500 F +353-1-478-7590 E info@douglaswallace.com

CLIENTS CARL PROPERTIES LIMITED

PROJECT PROPOSED RESIDENTIAL DEVELOPMENT AT 21 WHITEHALL ROAD WEST, DUBLIN 12

TITLE PROPOSED REAR (WEST) ELEVATION

PROJ. NO.	DRG. NO.	REVISION
5368	PL - 201	A

DRAWN	SCALE	CHECKED BY	DATE
DM	1:100 @ A3	DM	APRIL / 2022



01 PROPOSED REAR (WEST) ELEVATION
 ELEVATION TO WELLINGTON COURT APARTMENT COMPLEX
 1:100 @ A3

— = EXTENTS OF PLANNING APPLICATION SITE

STATUS :

PLANNING

THIS DRAWING HAS BEEN PREPARED SOLELY FOR THE PURPOSE OF PLANNING PERMISSION. THIS DRAWING IS NOT TO BE RELIED UPON FOR CONSTRUCTION AND NO GUARANTEE IS GIVEN AS TO ITS SUITABILITY FOR CONSTRUCTION.

FINISHES LEGEND

- 01 Brickwork to Architect's approval.
- 02 Pressed Metal Cladding to Roof/ Penthouse
- 03 External grade aluminium windows/ frames with clear glazing, to selected colour to Architect's approval.
- 04 External grade aluminium windows/ frames with Opaque Glazing, to selected colour to Architect's approval.
- 05 External grade aluminium windows/ frames with Grey Glass Glazing, to Architect's approval.
- 06 Spandrel Panel to Glazing at Floor levels.
- 07 External grade timber/Aluminium Doors / Frames with clear galzing, to selected colour.
- 08 Painted Napped Render Finish
- 09 Pressed Aluminium Metal Cladding
- 10 Precast RC Cills
- 11 Precast RC Parapet Capping
- 12 Opaque Glazed Balustrade
- 13 Raised Letter Signage / Panel
- 14 Painted Hardwood Doors to Car Park Access
- 15 Opaque Glazed Screen

A	12.05.22	DM	ISSUED FOR PLANNING	DM
REV.	DATE	BY	DESCRIPTION	CHKD

NOTE © This drawing is copyright. Figured dimensions only to be taken from this drawing. All dimensions to be checked on site. Architects to be informed immediately of any discrepancies before work proceeds.

DOUGLAS WALLACE | CONSULTANTS

St. Kevins Female School . 1 Grantham Street . Dublin 8
 T +353-1-478-7500 F +353-1-478-7590 E info@douglaswallace.com

CLIENTS CARL PROPERTIES LIMITED

PROJECT PROPOSED RESIDENTIAL DEVELOPMENT AT 21 WHITEHALL ROAD WEST, DUBLIN 12

TITLE PROPOSED FRONT (EAST) ELEVATION

PROJ NO.	DRG. NO.	REVISION
5368	PL - 200	A

DRAWN	SCALE	CHECKED BY	DATE
DM	1:100 @ A3	DM	APRIL/ 2022



01 PROPOSED FRONT ELEVATION
 ELEVATION TO WHITEHALL ROAD WEST STREETSCAPE
 1:100 @ A3

— = EXTENTS OF PLANNING APPLICATION SITE