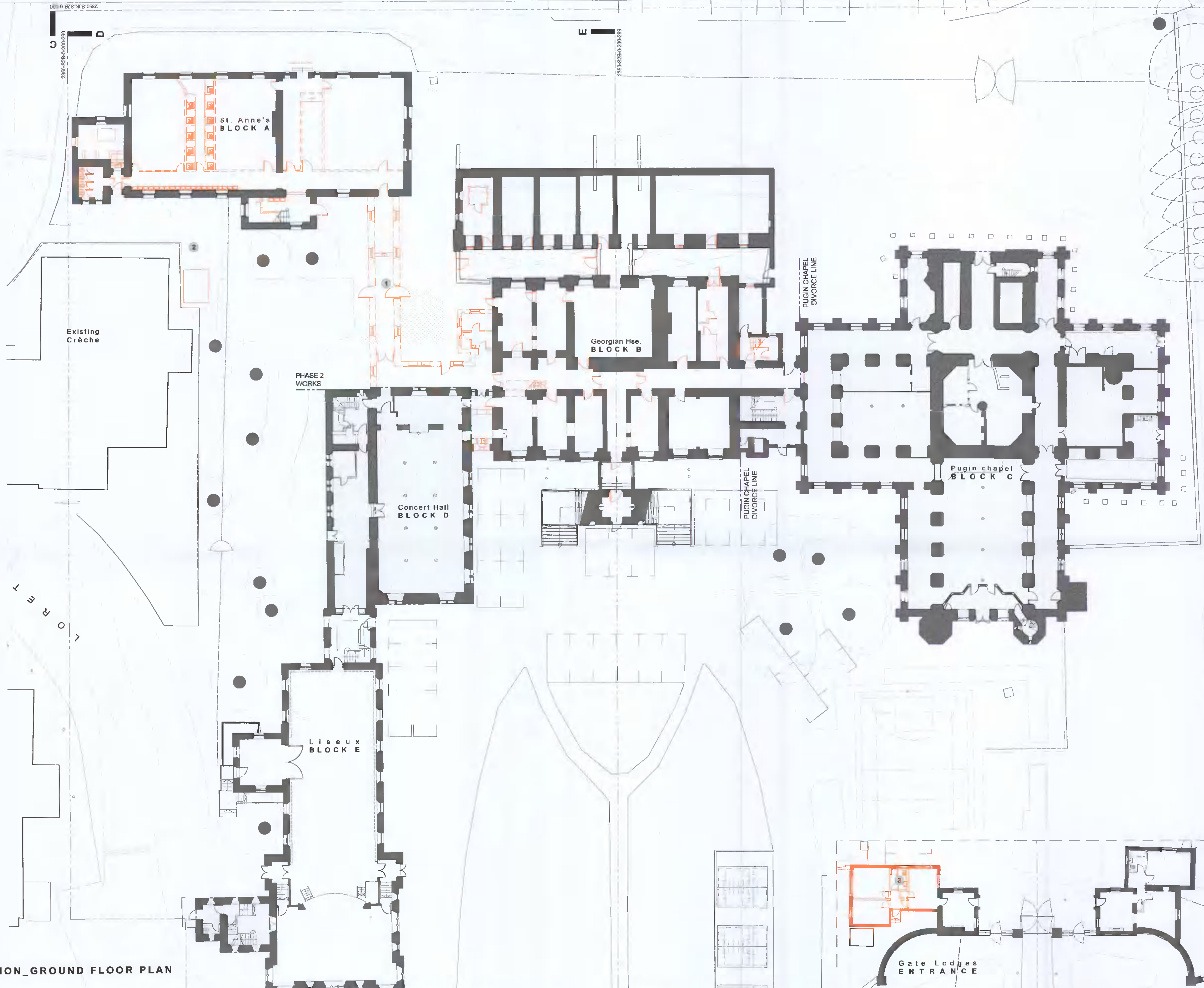


KEY PLAN



PROPOSED DEMOLITION\_GROUND FLOOR PLAN

- LEGEND
- Proposed building demolition
  - 1 Remove existing link and 1970s toilet block between blocks A, B, and D
  - 2 Remove existing shed belonging to crèche
  - 3 Remove 20th century extension to historic Gate Lodge

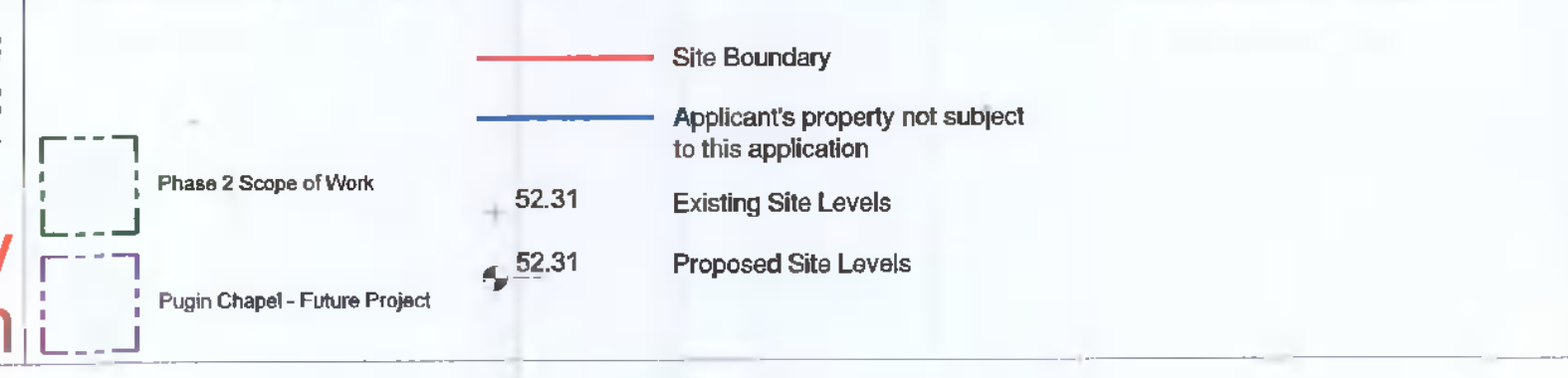
**Conditions of use of this drawing**  
 note: if this A1 size drawing is reproduced at a smaller size which makes these conditions difficult to read, please contact the Architects office for a legible copy of these conditions.

- The drawing is the design and contains copyright in the design and the drawings are the property of the Architects.
- This drawing is to be used only for the specific project and for the specific purpose for which it has been prepared. It is not to be used for any other purpose, and no part of it is to be reproduced, stored in a retrieval system, or transmitted in any form or by any means, electronic, mechanical, photocopying, recording, or by any information storage and retrieval system, without the prior written consent of the Architects.
- The drawing is to be used only for the specific project and for the specific purpose for which it has been prepared. It is not to be used for any other purpose, and no part of it is to be reproduced, stored in a retrieval system, or transmitted in any form or by any means, electronic, mechanical, photocopying, recording, or by any information storage and retrieval system, without the prior written consent of the Architects.
- Where the Architects conditions of engagement provide that the Employer obtains copyright (by virtue of transfer of ownership or expressed or implied licence) for use in projects other than the project which the copyright material was specifically prepared for, the Architect does not accept any liability whatsoever (in respect of the use of this drawing and of its contents (in whole or in part) in relation to any project other than the project for which it was specifically prepared. A copyright warning to use this drawing and of its contents (in whole or in part) is not a warranty that use of this drawing and of its contents (in whole or in part) is appropriate in circumstances other than the project and project for which it has been prepared.

- Do not scale off this drawing. Figure and dimensions only should be taken off this drawing. Imperial dimensions, if any, contained on this drawing are given for illustrative purposes only.
- All contractors, whether main or sub-contractors, must visit the site and check any and all dimensions levels and the true relationship to the site.
- Where the drawing contains references to other relevant documents, such documents shall be brought to the attention of the Architects who shall issue a written instruction as to which information is to be followed, and until such written Architects instruction has been issued any work carried out on the site shall be held to be in accordance with the drawing.
- References to National Standards whether to BS (BSI), BS (BSI), or otherwise, or codes of practice (COP) shall be deemed to refer to the relevant standard or code in force at the date of issue of the drawing unless otherwise stated.
- Any reference to the "Architect" or "Architects" in this or any other relevant document shall mean the nominated project Architect and/or a Director of Simon J Kelly Architects who has been nominated as Designer in charge but only where such Architect remains in the employment of Simon J Kelly Architects.
- Any conditions as to the meaning or application of these conditions shall be subject to writing to the Architects by the Employer and such a written instruction shall be deemed to be a condition of these conditions.
- Simon J Kelly Architects, their Agents, Architects, employees and contractors shall not be liable for any loss or damage or injury (consequential or otherwise) however arising from the use of this drawing and of its contents (in whole or in part) in relation to any project other than the project for which it was specifically prepared. A copyright warning to use this drawing and of its contents (in whole or in part) is not a warranty that use of this drawing and of its contents (in whole or in part) is appropriate in circumstances other than the project and project for which it has been prepared.

liability whatsoever (however arising) in relation to such use.

- Should anyone copy this drawing in whole or in part without consent they should also copy these conditions of use in full and reproduce them with the copy. These conditions of use are to be read in conjunction with the drawing and its contents, these conditions of use form part of this drawing and its contents and are inseparable from this drawing and its contents.
- The use of or reference upon this drawing and of its contents shall be deemed to be acceptance of these conditions of use unless otherwise agreed in writing, and the Employer's agreement to be sought from and issued by the Architects prior to the use or reference upon this drawing and its contents.
- All drawings are to be read in conjunction with the site safety compliance report, all other contract documents, all statutory consents and requirements and all statutory obligations.



preliminary  
not for construction

PROJECT: Gaelcholáiste an Phiarasaigh - Loreto Abbey, Rathlarnham  
 CLIENT: Department of Education / Board of Management  
 DRAWING: Ground Floor Plan - Demolitions

DRAWING PURPOSE: Planning	DRAWING BY: CUIC	APPROVED: June '22	DATE: June '22
DRAWING SIZE: A1	SCALE: 1:200	DRAWING REFERENCE: 2350-SJK-S2B-0-130	REV. NO:

1 Mount Street Crescent, Dublin 2, D02 X757  
 +353 1 676 4128  
 info@sk.ie  
 www.sk.ie

Simon J Kelly Architects  
 21 Middle Street, Galway  
 +353 91 85 2949  
 Cox's Yard, Westport, Mayo  
 +353 06 24 414  
 mail@sk.ie  
 www.sk.ie