

Equinix DB8 Data Centre, Profile Business Park, Dublin 22

DB080-RKD-XX-XX-RP-A-XXXX-9001

Visual Impact Assessment

Purpose of issue: S4 – Issued for Planning (II)

Revision: P03

26 May 2022

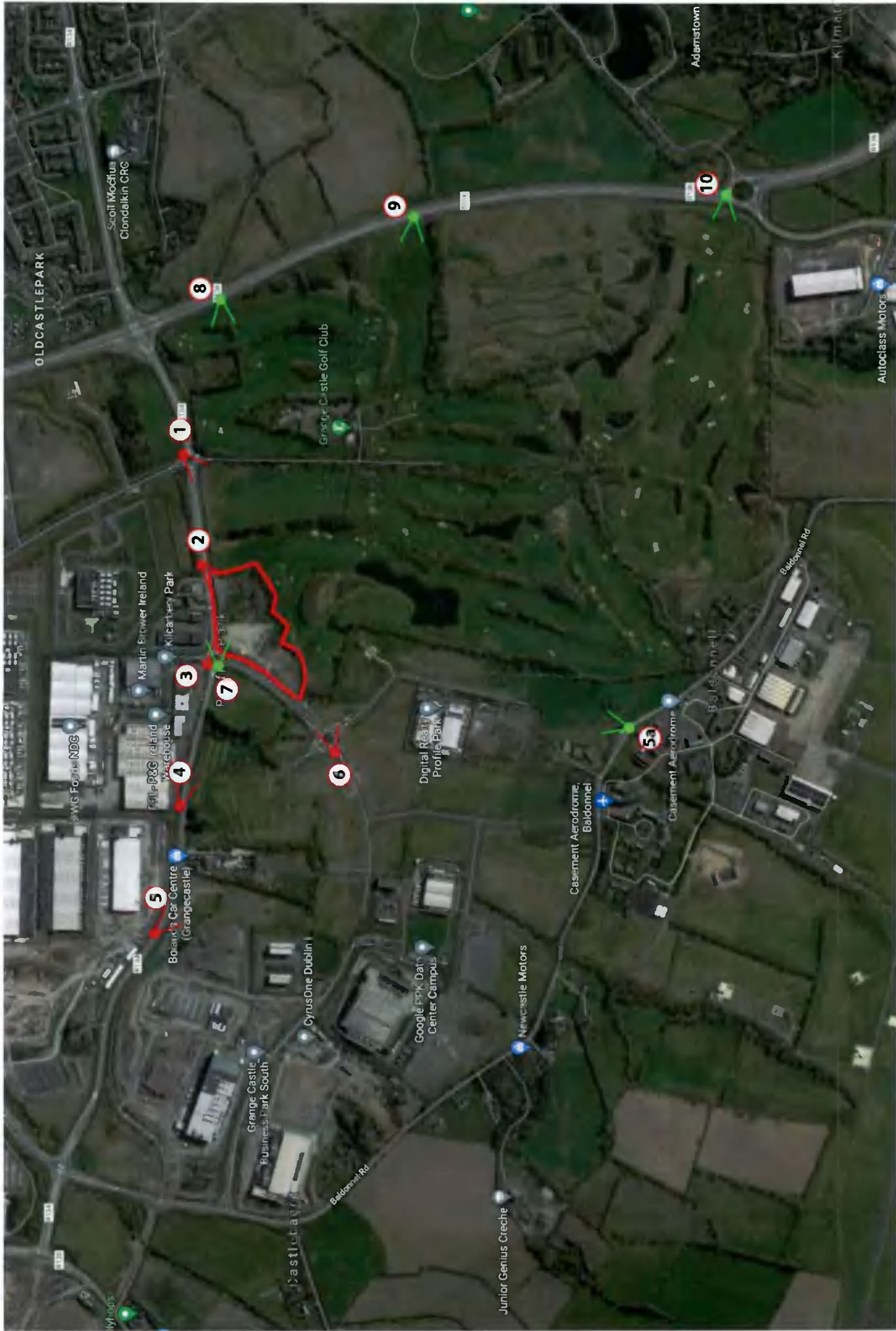
Equinix DB8 Data Centre

Profile Park, Dublin 22

Method Statement - Photo-montage production.

1. Photographs are taken from locations as advised by the client with a full frame SLR digital camera and prime lens. The photographs are taken horizontally with a survey level attached to the camera. The photographic positions are marked (for later surveying), the height of the camera and the focal length of the image recorded.
2. In each photograph, a minimum of 3no. visible fixed points are marked for surveying. These are control points for model alignment within the photograph. All surveying is carried out by a qualified topographical surveyor using Total Station / GPS devices.
3. The photographic positions and the control points are geographically surveyed and this survey is tied in to the site topographical survey supplied by the Architect / client.
4. The buildings are accurately modelled in 3D cad software from cad drawings supplied by the Architect. Material finishes are applied to the 3D model and scene element are placed like trees and planting to represent the proposed landscaping.
5. Virtual 3D cameras are positioned according to the survey co-ordinates and the focal length is set to match the photograph. Pitch and rotation are adjusted using the survey control points to align the virtual camera to the photograph. Lighting is set to match the time of day the photograph is taken.
6. The proposed development is output from the 3D software using this camera and the image is then blended with the original photograph to give an accurate image of what the proposed development will look like in its proposed setting.
7. In the event of the development not being visible, the roof line of the development will be outlined in red if requested.
8. The document contains:
 - a) Site location map with view locations plotted.
 - b) Photo-montage sheet with existing or proposed conditions.
 - c) Reference information including field of view/focal length, range to site / development, date of photograph.
9. The proposed view will contain the building where visible or partially visible. Where the building is not visible or where the visible proportion of the building is not perceptible then a redline will indicate the extent of the proposed development in the background. Where there are other developments in the vicinity with planning permission or under construction a blue line and or grey massing will represent the adjacent development.





Location Map

Project: Equinix DB8 Data Centre, Profile Park, Dublin 22



Location	Date	Field of view	35mm equivalent	Distance to site	Camera model
View 1 Existing	09-06-2021	73°	24mm	281m	Canon EOS 5DS



Location	Date	Field of view	35mm equivalent	Distance to site	Camera model
View 1 as permitted	09-06-2021	73°	24mm	281m	Canon EOS 5DS



Location	Date	Field of view	35mm equivalent	Distance to site	Camera model
View 1 Proposed	09-06-2021	73°	24mm	281m	Canon EOS 5DS



Location	Date	Field of view	35mm equivalent	Distance to site	Camera model
View 2 Existing	09-06-2021	73°	24mm	24.5m	Canon EOS 5DS



Location	Date	Field of view	35mm equivalent	Distance to site	Camera model
View 2 as permitted	09-06-2021	73°	24mm	24.5m	Canon EOS 5DS



Location	Date	Field of view	35mm equivalent	Distance to site	Camera model
View 2 Proposed	09-06-2021	73°	24mm	24.5m	Canon EOS 5DS



Location	Date	Field of view	35mm equivalent	Distance to site	Camera model
View 3 Existing	09-06-2021	73°	24mm	51.6m	Canon EOS 5DS



Location	Date	Field of view	35mm equivalent	Distance to site	Camera model
View 3 as permitted	09-06-2021	73°	24mm	51.6m	Canon EOS 5DS



Location	Date	Field of view	35mm equivalent	Distance to site	Camera model
View 3 Proposed	09-06-2021	73°	24mm	51.6m	Canon EOS 5DS



Location	Date	Field of view	35mm equivalent	Distance to site	Camera model
View 4 Existing	09-06-2021	73°	24mm	258.8m	Canon EOS 5DS



Location	Date	Field of view	35mm equivalent	Distance to site	Camera model
View 4 as permitted	09-06-2021	73°	24mm	258.8m	Canon EOS 5DS



Location	Date	Field of view	35mm equivalent	Distance to site	Camera model
View 4 Proposed	09-06-2021	73°	24mm	258.8m	Canon EOS 5DS



Location	Date	Field of view	35mm equivalent	Distance to site	Camera model
View 5 Existing	09-06-2021	73°	24mm	604m	Canon EOS 5DS



Location	Date	Field of view	35mm equivalent	Distance to site	Camera model
View 5 as permitted	09-06-2021	73°	24mm	604m	Canon EOS 5DS



Location	Date	Field of view	35mm equivalent	Distance to site	Camera model
View 5 Proposed	09-06-2021	73°	24mm	604m	Canon EOS 5DS



Location	Date	Field of view	35mm equivalent	Distance to site	Camera model
View 5a Existing	09-06-2021	73°	24mm	686m	Canon EOS 5DS



Location	Date	Field of view	35mm equivalent	Distance to site	Camera model
View 5a as permitted	09-06-2021	73°	24mm	686m	Canon EOS 5DS



Location	Date	Field of view	35mm equivalent	Distance to site	Camera model
View 5a Proposed	09-06-2021	73°	24mm	686m	Canon EOS 5DS



Location	Date	Field of view	35mm equivalent	Distance to site	Camera model
View 6 Existing	09-06-2021	73°	24mm	152m	Canon EOS 5DS



Location	Date	Field of view	35mm equivalent	Distance to site	Camera model
View 6 as permitted	09-06-2021	73°	24mm	152m	Canon EOS 5DS



Location	Date	Field of view	35mm equivalent	Distance to site	Camera model
View 6 Proposed	09-06-2021	73°	24mm	152m	Canon EOS 5DS



Location	Date	Field of view	35mm equivalent	Distance to site	Camera model
View 7 Existing	22-10-2021	73°	24mm	41m	Canon EOS 5DS



Location	Date	Field of view	35mm equivalent	Distance to site	Camera model
View 7 as permitted	22-10-2021	73°	24mm	41m	Canon EOS 5DS



Location	Date	Field of view	35mm equivalent	Distance to site	Camera model
View 7 Proposed	22-10-2021	73°	24mm	41m	Canon EOS 5DS



Location	Date	Field of view	35mm equivalent	Distance to site	Camera model
View 8 Existing	22-10-2021	73°	24mm	564m	Canon EOS 5DS



Location	Date	Field of view	35mm equivalent	Distance to site	Camera model
View 8 as permitted	22-10-2021	73°	24mm	564m	Canon EOS 5DS



Location	Date	Field of view	35mm equivalent	Distance to site	Camera model
View 8 Proposed	22-10-2021	73°	24mm	564m	Canon EOS 5DS



Location	Date	Field of view	35mm equivalent	Distance to site	Camera model
View 9 Existing	22-10-2021	73°	24mm	799m	Canon EOS 5DS



Location	Date	Field of view	35mm equivalent	Distance to site	Camera model
View 9 as permitted	22-10-2021	73°	24mm	799m	Canon EOS 5DS



Location	Date	Field of view	35mm equivalent	Distance to site	Camera model
View 9 Proposed	22-10-2021	73°	24mm	799m	Canon EOS 5DS



Location	Date	Field of view	35mm equivalent	Distance to site	Camera model
View 10 Existing	22-10-2021	73°	24mm	1273m	Canon EOS 5DS



Location	Date	Field of view	35mm equivalent	Distance to site	Camera model
View 10 as permitted	22-10-2021	73°	24mm	1273m	Canon EOS 5DS



Location	Date	Field of view	35mm equivalent	Distance to site	Camera model
View 10 Proposed	22-10-2021	73°	24mm	1273m	Canon EOS 5DS