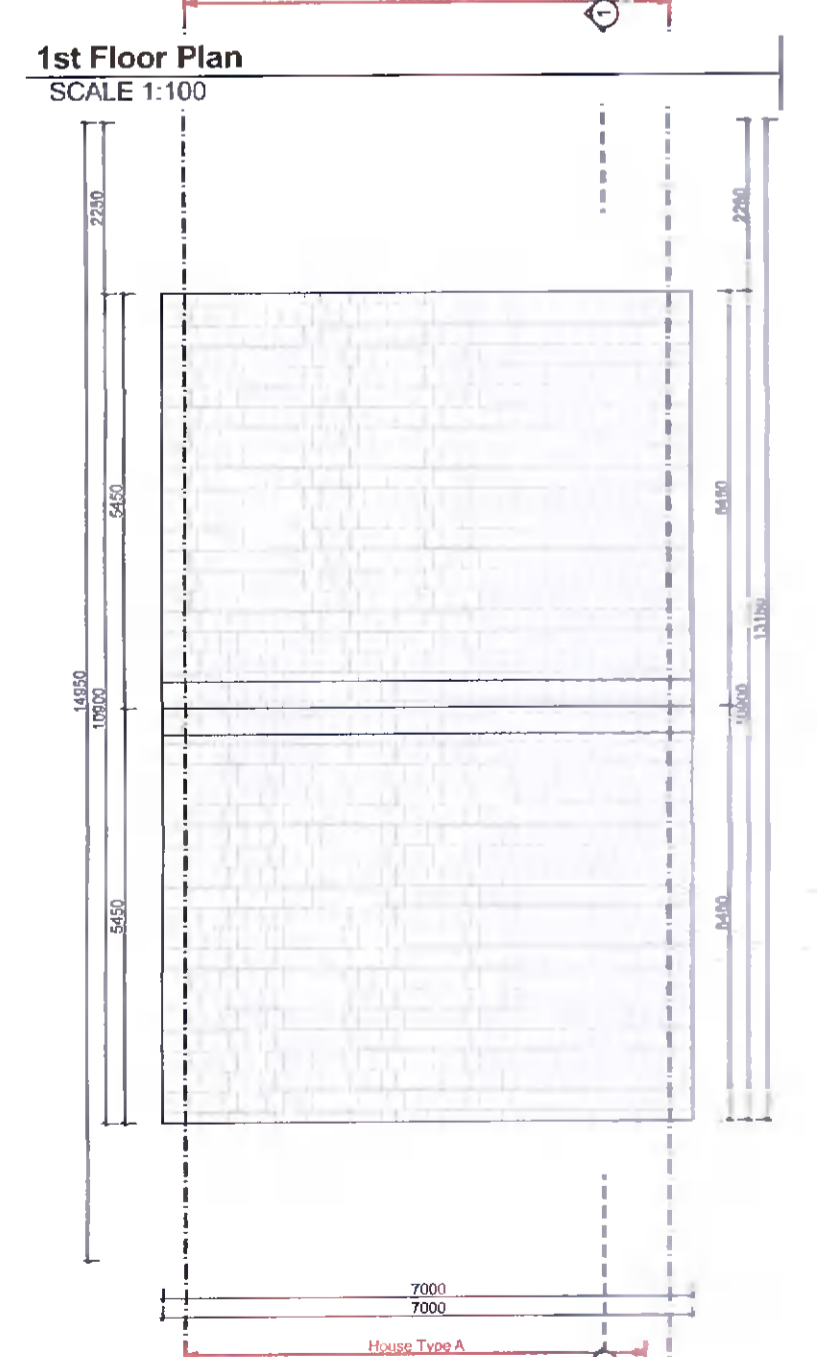
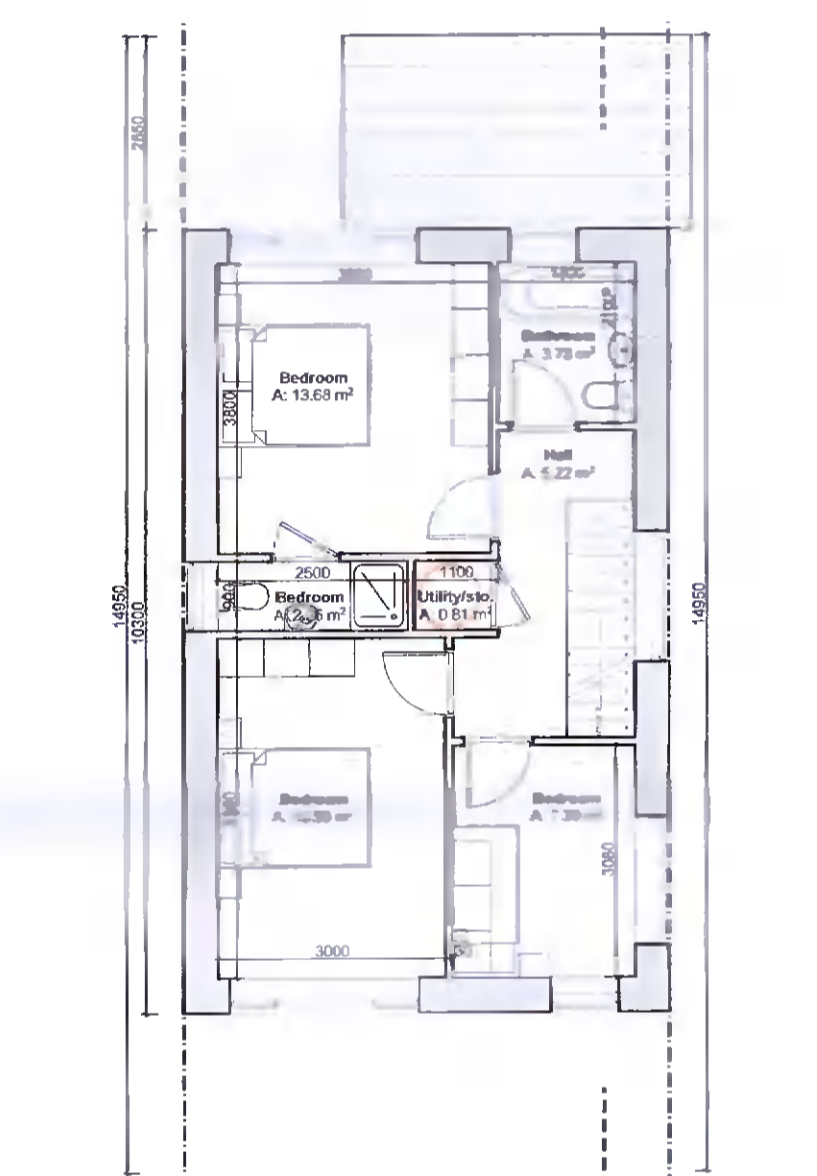
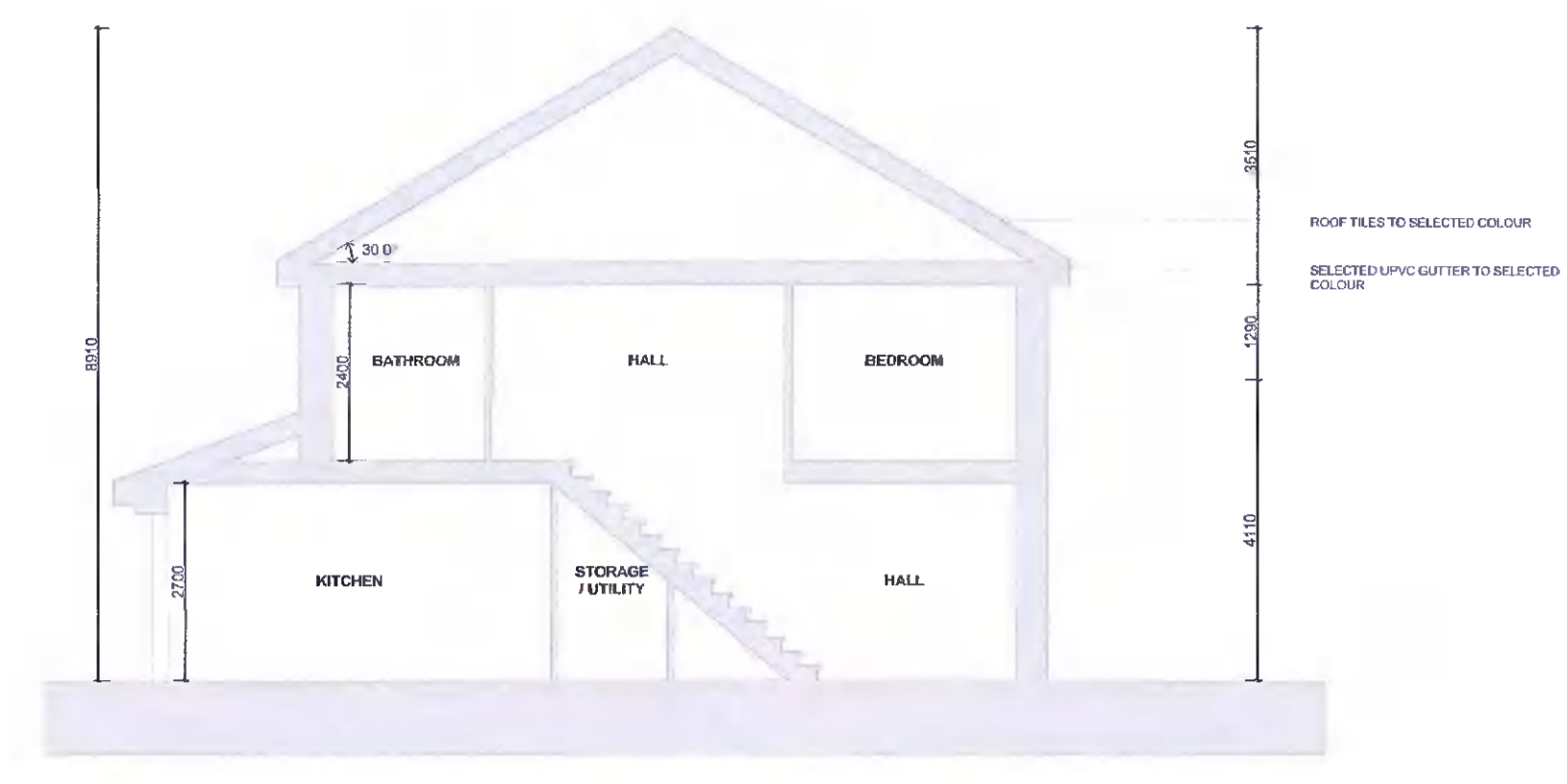
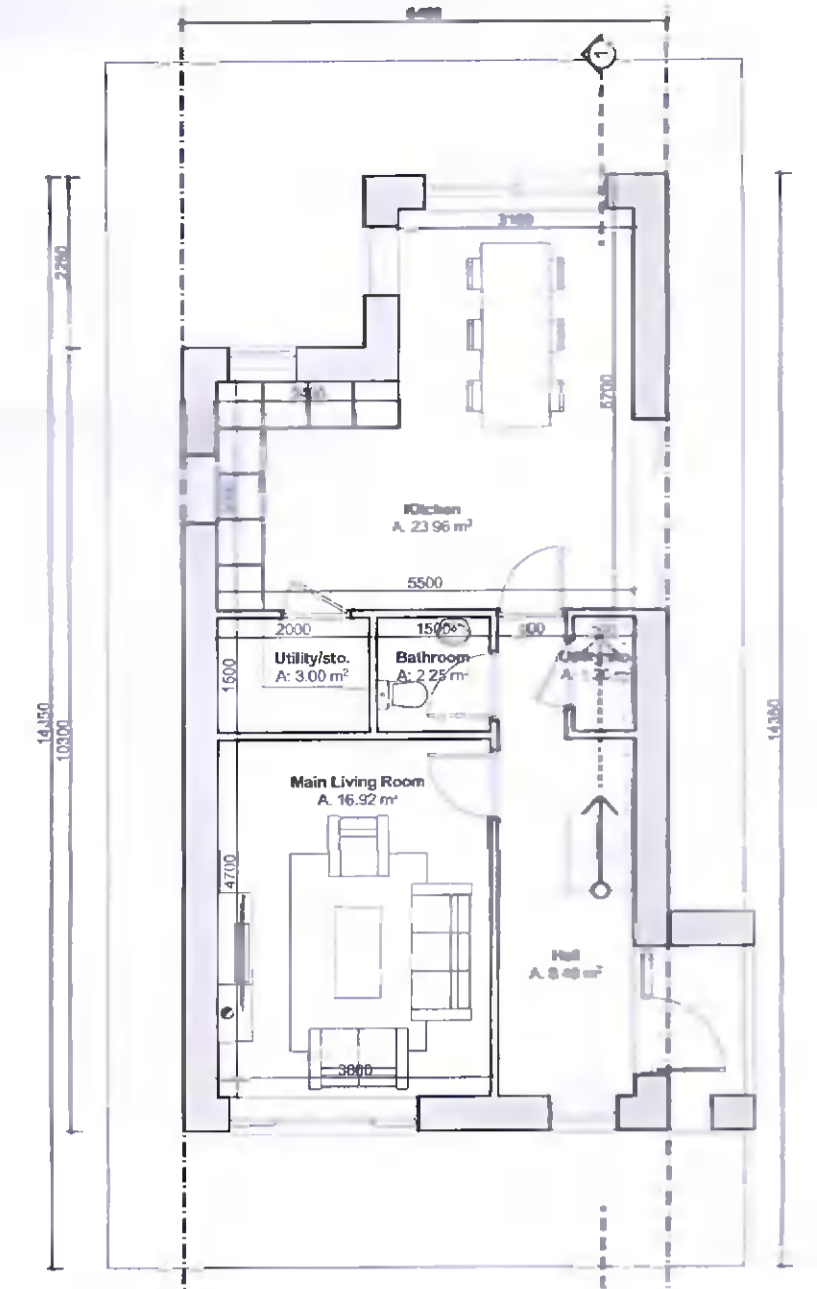


**PROPOSED & PERMITTED
HOUSETYPE D**

**3 Bed Detached
Total GFA 111 sqm**



House Type A: 3 Bedrooms / 5 Occupants / 2 Stories				
Room	*Required Area (m ²)	Proposed Area (m ²)	Minimum Width (m)	Proposed Width (m)
Aggregate Living Area	34	41	3.8	5.2
Main Double Bedroom	13	13.68	2.8	3.6
Double Bedroom	11.4	13.5	2.8	3
Single Bedroom	7.1	7.25	2.1	2.4
Aggregate Storage Space	5	6.6		

Required and Proposed Area Schedule
*Required Areas reproduced from 'Quality Housing for Sustainable Communities'
Department of the Environment Heritage and Local Government, Published 2007

