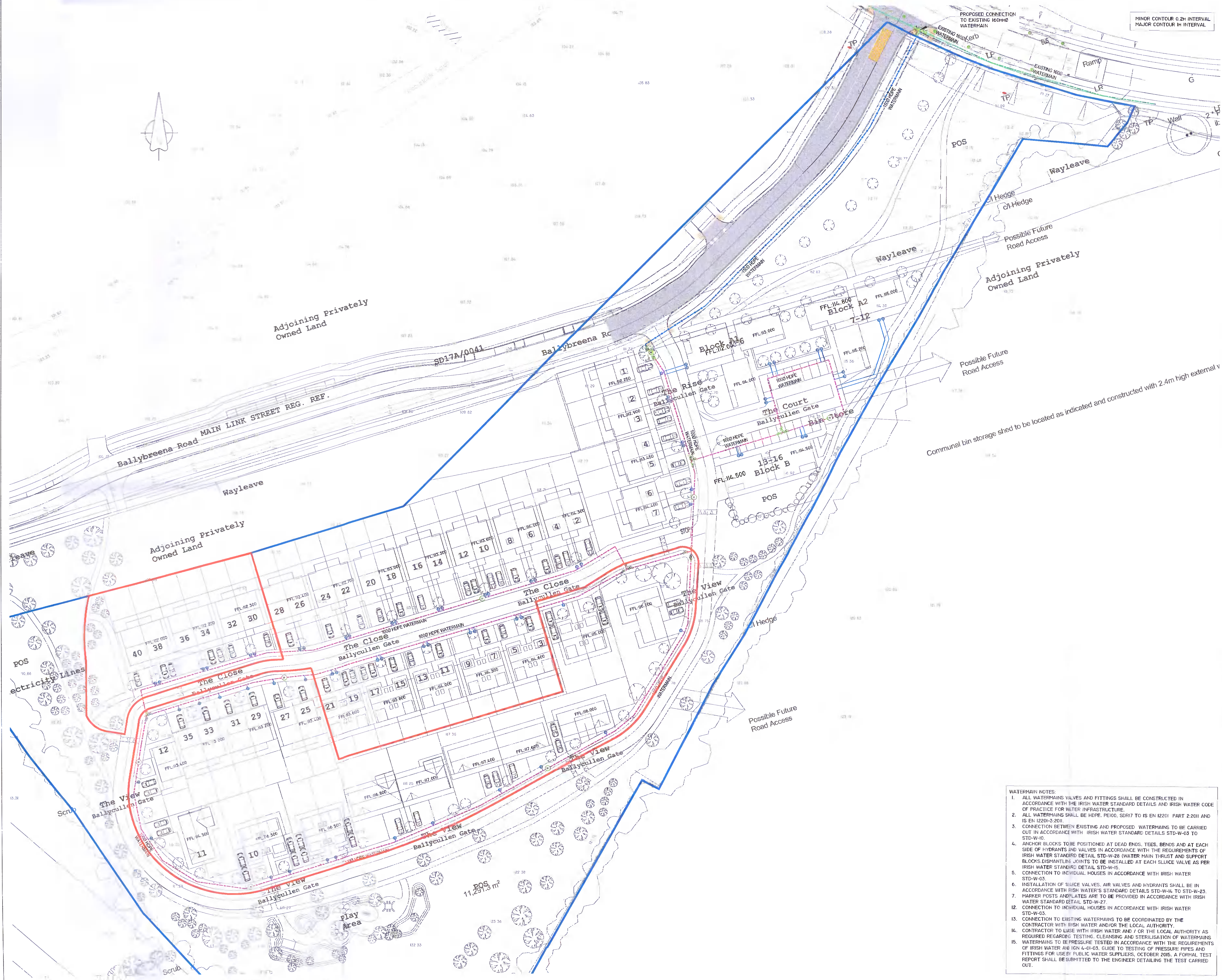


**GENERAL NOTES**

- DO NOT SCALE THIS DRAWING. WORK ONLY TO FIGURED DIMENSIONS.
- FOR ALL RELEVANT NOTES, REFER TO STRUCTURAL AND CIVIL ENGINEERING PERFORMANCE SPECIFICATION.
- ANY DISCREPANCIES ARE TO BE REPORTED TO PINNACLE CONSULTING ENGINEERS IMMEDIATELY.
- THIS DRAWING IS TO BE READ IN CONJUNCTION WITH ALL OTHER RELEVANT ENGINEERS, ARCHITECTS AND SUB-CONTRACTORS DRAWINGS AND DETAILS.

**LEGEND**

	EXISTING WATERMAIN
	PROPOSED 150MM HDPE, PE100, SDR17 WATERMAIN
	PROPOSED 100MM HDPE, PE100, SDR17 WATERMAIN
	BOUNDARY BOX AND 25mm OD PE80 SERVICE CONNECTION AS PER IRISH WATER STANDARD STD-W-03
	PROPOSED FFL
	PROPOSED LEVEL
	EXISTING LEVEL
	PROPOSED GRADIENT
	SLUICE VALVES AS PER IRISH WATER STANDARD DETAIL STD-W-16/15
	AIR VALVE AS PER IRISH WATER STANDARD DETAIL STD-W-20/22
	SCOUR VALVE AS PER IRISH WATER STANDARD DETAIL STD-W-30
	HYDRANTS AS PER IRISH WATER STANDARD DETAIL STD-W-16/18
	WASH OUT HYDRANT CHAMBER AS PER IRISH WATER STANDARD STD-W-30A
	METER CHAMBER AS PER IRISH WATER STANDARD STD-W-26
	SITE BOUNDARY
	PROPOSED EXTERNAL ROAD LIFEGRADE



Communal bin storage shed to be located as indicated and constructed with 2.4m high external wall

0 50mm ON A1 DWG. 50

PO2	RED BOUNDARY LINE UPDATED	FJVR	SO'R	MAY 2022
PO1	PLANNING SUBMISSION	FJVR	SO'R	APR 2022
REV	DESCRIPTION	BY	CHK	DATE
CLIENT				

**CAPAMI LTD**

PROJECT  
**OLDCOURT  
 OCIL 4**

DRAWING TITLE  
**PROPOSED WATERMAIN**

**PINNACLE  
 CONSULTING ENGINEERS**

CROSVENOR COURT,  
 67A PATRICK STREET,  
 DUN LAOGHAIRE,  
 COUNTY DUBLIN  
 IRELAND.

TELEPHONE: +353 1231 1041

WELWYN GARDEN CITY | NORWICH | LONDON | THE HAGUE

DRAWING STATUS

<b>PLANNING</b>			
SCALE @ A1	DATE	DRAWN BY	CHECKED
1:500	JAN '22	FJVR	SO'R
DRG NO.	REVISION		
P190302-252	P02		

COPYRIGHT PINNACLE

- WATERMAIN NOTES:**
- ALL WATERMANS VALVES AND FITTINGS SHALL BE CONSTRUCTED IN ACCORDANCE WITH THE IRISH WATER STANDARD DETAILS AND IRISH WATER CODE OF PRACTICE FOR WATER INFRASTRUCTURE.
  - ALL WATERMANS SHALL BE HDPE, PE100, SDR17 TO IS EN 12201 PART 2:2011 AND IS EN 12201-3:2011.
  - CONNECTION BETWEEN EXISTING AND PROPOSED WATERMANS TO BE CARRIED OUT IN ACCORDANCE WITH IRISH WATER STANDARD DETAILS STD-W-03 TO STD-W-10.
  - ANCHOR BLOCKS TO BE POSITIONED AT DEAD ENDS, TEES, BENDS AND AT EACH SIDE OF HYDRANTS AND VALVES IN ACCORDANCE WITH THE REQUIREMENTS OF IRISH WATER STANDARD DETAIL STD-W-28 (WATER MAIN THRUST AND SUPPORT BLOCKS). DISMANTLING JOINTS TO BE INSTALLED AT EACH SLUICE VALVE AS PER IRISH WATER STANDARD DETAIL STD-W-15.
  - CONNECTION TO INDIVIDUAL HOUSES IN ACCORDANCE WITH IRISH WATER STANDARD STD-W-03.
  - INSTALLATION OF SLUICE VALVES, AIR VALVES AND HYDRANTS SHALL BE IN ACCORDANCE WITH IRISH WATER STANDARD DETAILS STD-W-14 TO STD-W-23.
  - MARKER POSTS AND PLATES ARE TO BE PROVIDED IN ACCORDANCE WITH IRISH WATER STANDARD DETAIL STD-W-27.
  - CONNECTION TO INDIVIDUAL HOUSES IN ACCORDANCE WITH IRISH WATER STANDARD STD-W-03.
  - CONNECTION TO EXISTING WATERMANS TO BE COORDINATED BY THE CONTRACTOR WITH IRISH WATER AND/OR THE LOCAL AUTHORITY.
  - CONTRACTOR TO LIASE WITH IRISH WATER AND / OR THE LOCAL AUTHORITY AS REQUIRED REGARDING TESTING, CLEANSING AND STERILISATION OF WATERMANS.
  - WATERMANS TO BE PRESSURE TESTED IN ACCORDANCE WITH THE REQUIREMENTS OF IRISH WATER AND IGA 4-01-03. GUIDE TO TESTING OF PRESSURE PIPES AND FITTINGS FOR USE BY PUBLIC WATER SUPPLIERS, OCTOBER 2015. A FORMAL TEST REPORT SHALL BE SUBMITTED TO THE ENGINEER DETAILING THE TEST CARRIED OUT.