

Client:



HAZARD IDENTIFICATION LEGEND:

HAZARD IDENTIFICATION (if none state 'none relevant')	CONTROL AND MITIGATION MEASURES

NOTE: Hazards listed above are only those considered significant risks and:

a) not likely to be obvious to a competent contractor or other designers;

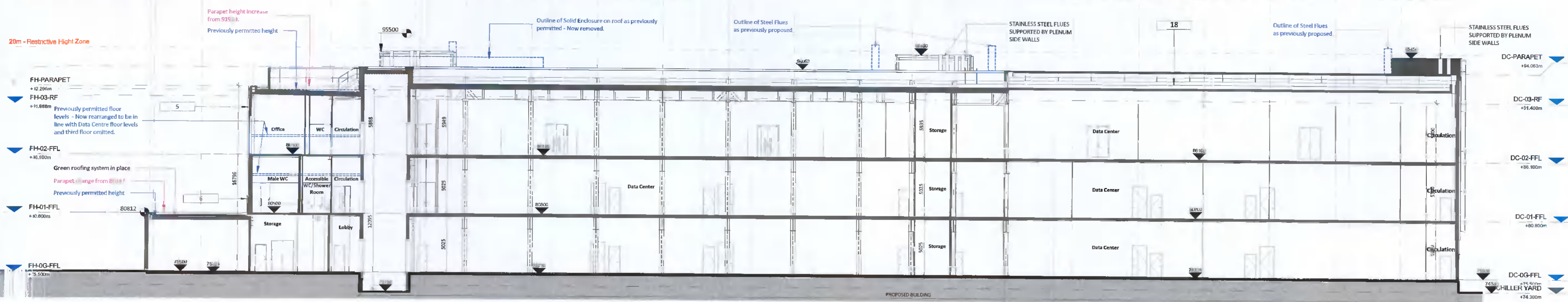
b) unusual; or

c) likely to be difficult to manage effectively

- SITE BOUNDARY
- AREA IN OWNERSHIP OF CLIENT
- NEWLY PROPOSED ELEMENTS SUBJECT TO THIS PLANNING APPLICATION
- AMMENDMENTS TO PREVIOUSLY APPROVED PLANNING APPLICATION: REG. REF. SD21A/0186

1.0X 1.0 1.0A 1.1 1.1A 1.1B 1.2 1.2A 1.3 1.4 1.5 1.6 1.7 1.8 1.9 1.10 1.11 1.12 1.13 1.14 1.15 1.16 1.17 1.18

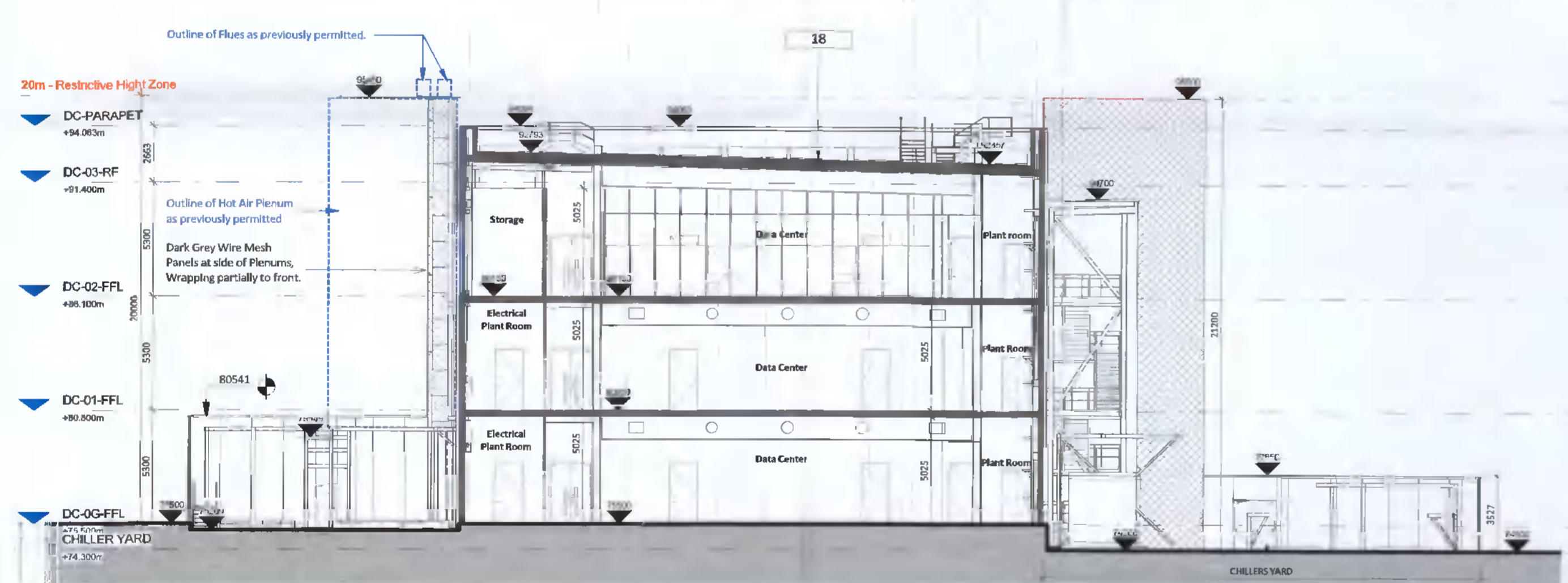
25m - Noted height achieved by other planning applications in Profile Park area - acceptable height for roof services



Section A-A
1 : 200

A B C D DX E FX GX H IX I

25m - Noted height achieved by other planning applications in Profile Park area - acceptable height for roof services



Section B-B
1 : 200

MATERIAL LEGEND:

- | | |
|--|--|
| <ul style="list-style-type: none"> 1 COMPOSITE CLADDING PANEL INSTALLED HORIZONTALLY, FLAT PANEL COLOUR DARK GREY - RAL 7016 2 COMPOSITE CLADDING PANEL INSTALLED HORIZONTALLY, FLAT PANEL COLOUR DARK GREY - RAL 7016 WITH 150MM FINS IN MATCHING COLOUR FINS INSTALLED AT PANELS VERTICAL JOINTS AT 2.5M CENTRES 3 ALUMINIUM LOUVRE PANEL SYSTEM - DARK GREY - RAL 7016 4 ALUMINIUM LOUVRE SCREEN - COLOUR GREY - RAL 7023 5 GLAZED CURTAIN WALL SYSTEM WITH FINS PROTRUDING 150mm FROM EACH MULLION FRAME COLOUR TO MATCH FIBRE CEMENT CLADDING (GRANITE) 6 FIBRE-CEMENT CLADDING PANELS WITH VERTICAL GROOVED TEXTURE COLOUR GRANITE 7 COMPOSITE CLADDING PANEL INSTALLED VERTICALLY, COLOUR LIGHT GREY - RAL 7035 8 ACOUSTIC SCREENING WALL, INSTALLED VERTICALLY COLOUR LIGHT GREY - RAL 7035 9 FIBRE-CEMENT CLADDING PANELS WITH VERTICAL GROOVED TEXTURE COLOUR ANTHRACITE GREY | <ul style="list-style-type: none"> 10 STAINLESS STEEL WOVEN METAL MESH CLADDING ON STEEL STRUCTURE PAINTED RED. STAIR STRINGERS ALSO PAINTED IN RED COLOUR 11 COMPOSITE CLADDING PANEL FLAT COLOUR LIGHT GREY - RAL 7035 ALUMINIUM FINS PROTRUDING 150MM IN MATCHING COLOUR WITH INDIVIDUAL FINS IN RED COLOUR FINS INSTALLED AT RANDOM PATTERN 12 PRESSED METAL CAPPING POWDERCOATED TO COLOUR TO MATCH CLADDING BELOW 13 STEEL DOOR POWDERCOATED IN RED COLOUR - RAL 7035 14 INSULATED ROLLER SHUTTER, COLOUR RAL 7016 15 SCREENING WALL, COMPOSITE PANELS WITH MICRORIB PATTERN, INSTALLED VERTICALLY COLOUR LIGHT GREY - RAL 7035 16 FIBRE-CEMENT CLADDING PANELS, FLAT PANELS COLOUR ANTHRACITE GREY 17 ALUMINIUM CLADDING TO CANOPY, POWDERCOATED TO RAL 7016, UNDERSIDE IN RED COLOUR 18 SINGLE PLY ROOF MEMBRANE IN WHITE COLOUR 19 STAINLESS STEEL WOVEN METAL MESH CLADDING ON STEEL STRUCTURE |
|--|--|



3 Key Plan
1 : 1000

REV	DATE	DESCRIPTION	DWN	CHK	APP
P03	2022-05-25	Revised Issue for Planning	KOH	MB	JS
P02	2021-11-25	Issued for Further Information	NC	MB	JS
P01	2021-05-16	Issued for Planning	NC	MB	JS

Key:

Project:

Equinix DB081

Drawing Title:
Proposed Sections

Drawing Number:

DB081 -RKD -ZZ -ZZ -DR -A -ZZZZ -3200

Scale: Paper Size: Purpose: Revision:
1:200 A1 S4 P03



59 Northumberland Rd
Ballsbridge, Dublin 4
D04 WP69, Ireland

+353 1 668 1055
msl@rkd.ie
rkd.ie