



HAZARD IDENTIFICATION (if none state 'none relevant')	CONTROL AND MITIGATION MEASURES

NOTE: Hazards listed above are only those considered significant risks and:

- a) not likely to be obvious to a competent contractor or other designers;
- b) unusual; or
- c) likely to be difficult to manage effectively

SITE BOUNDARY

AREA IN OWNERSHIP OF CLIENT

NEWLY PROPOSED ELEMENTS SUBJECT TO THIS PLANNING APPLICATION

AMMENDMENTS TO PREVIOUSLY APPROVED PLANNING APPLICATION: REG. REF. SD21A/0186

P03	2022-05-25	Revised Issue for Planning	KCH MB JS
P02	2021-11-25	Issued for Further Information	NC MB JS
P01	2021-06-16	Issued for Planning	NC MB JS
REV	DATE	DESCRIPTION	DWN CHK APP

Key:

Project:

Equinix DB081

Drawing Title:

Proposed Elevations - Sheet 1

Drawing Number:

DB081 -RDK -ZZ -ZZ -DR -A -ZZZZ -2200

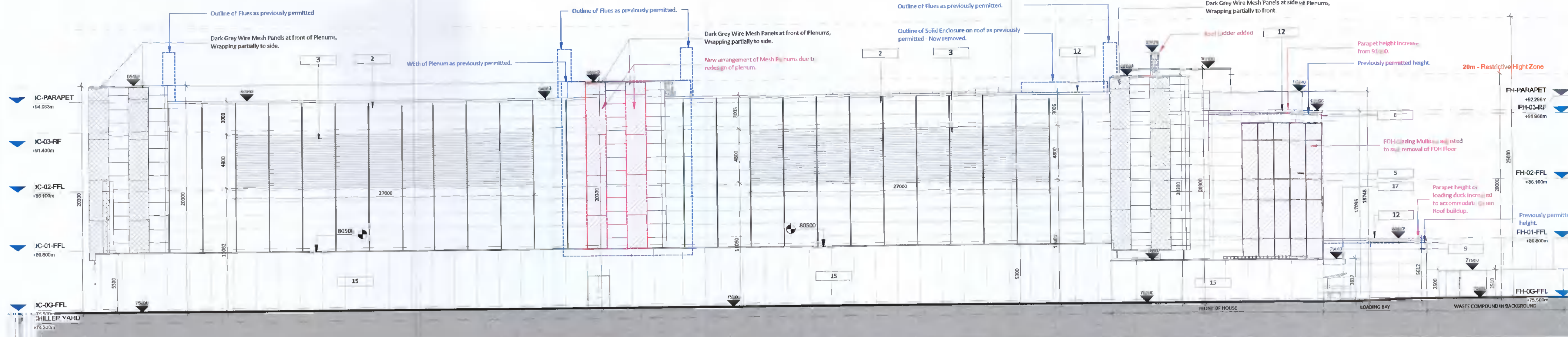
Scale: Paper Size: Purpose: Revision:

1:200 A1 S4 P03



59 Northumberland Rd
Ballisbridge, Dublin 4
D04 WP69, Ireland

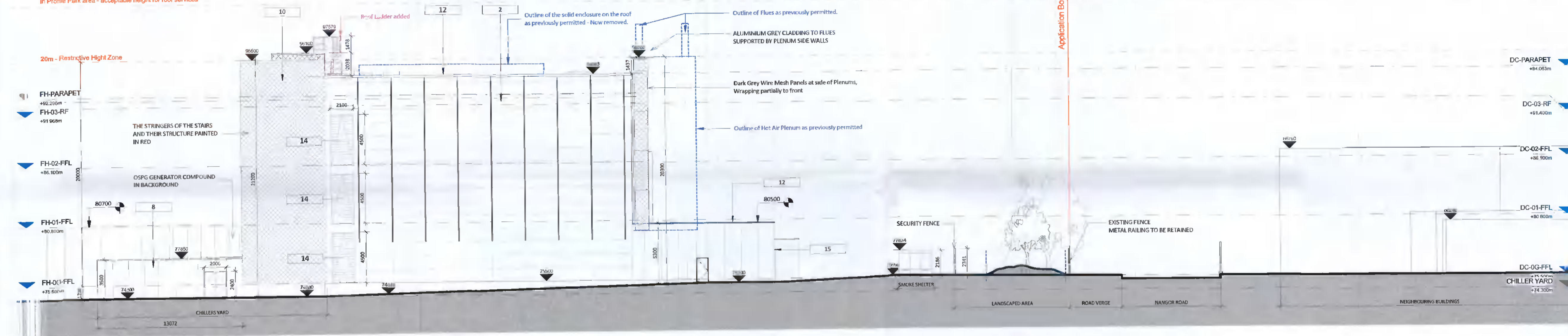
+353 1 688 1055
mail@rkd.ie
rkd.ie



Proposed North Elevation

1 : 200

25m - Noted height achieved by other planning applications in Profile Park area - acceptable height for roof services



Proposed East Elevation

1 : 200

MATERIAL LEGEND:

- | | |
|--|---|
| <p>1 COMPOSITE CLADDING PANEL INSTALLED HORIZONTALLY, FLAT PANEL, COLOUR DARK GREY - RAL 7016</p> <p>2 COMPOSITE CLADDING PANEL INSTALLED HORIZONTALLY, FLAT PANEL, COLOUR DARK GREY - RAL 7016 WITH 150MM FINS IN MATCHING COLOUR. FINS INSTALLED AT PANELS VERTICAL JOINTS AT 2.5M CENTRES</p> <p>3 ALUMINIUM LOUVRE PANEL SYSTEM - DARK GREY - RAL 7016</p> <p>4 ALUMINIUM LOUVRE SCREEN - COLOUR GREY - RAL 7023</p> <p>5 GLAZED CURTAIN WALL SYSTEM WITH FINS PROTRUDING 150mm FROM EACH MULLION FRAME COLOUR TO MATCH FIBRE CEMENT CLADDING (GRANITE)</p> <p>6 FIBRE-CEMENT CLADDING PANELS WITH VERTICAL GROOVED TEXTURE COLOUR GRANITE</p> <p>7 COMPOSITE CLADDING PANEL INSTALLED VERTICALLY, COLOUR LIGHT GREY - RAL 7035</p> <p>8 ACOUSTIC SCREENING WALL. INSTALLED VERTICALLY COLOUR LIGHT GREY - RAL 7035</p> <p>9 FIBRE-CEMENT CLADDING PANELS WITH VERTICAL GROOVED TEXTURE COLOUR ANTHRACITE GREY</p> | <p>10 STAINLESS STEEL WOVEN METAL MESH CLADDING ON STEEL STRUCTURE PAINTED RED STAIR STRINGERS ALSO PAINTED IN RED COLOUR</p> <p>11 COMPOSITE CLADDING PANEL, FLAT, COLOUR LIGHT GREY - RAL 7035 ALUMINIUM FINS PROTRUDING 150MM IN MATCHING COLOUR. WITH INDIVIDUAL FINS IN RED COLOUR. FINS INSTALLED AT RANDOM PATTERN</p> <p>12 PRESSED METAL CAPPING POWDERCOATED TO COLOUR TO MATCH CLADDING BELOW</p> <p>13 STEEL DOOR POWERCOATED IN RED COLOUR - RAL 7035</p> <p>14 INSULATED ROLLER SHUTTER, COLOUR RAL 7016</p> <p>15 SCREENING WALL, COMPOSITE PANELS WITH MICROGRIB PATTERN, INSTALLED VERTICALLY COLOUR LIGHT GREY - RAL 7035</p> <p>16 FIBRE-CEMENT CLADDING PANELS, FLAT PANELS COLOUR ANTHRACITE GREY</p> <p>17 ALUMINIUM CLADDING TO CANOPY, POWERCOATED TO RAL 7016. UNDERSIDE IN RED COLOUR</p> <p>18 SINGLE PLY ROOF MEMBRANE IN WHITE COLOUR</p> <p>19 STAINLESS STEEL WOVEN METAL MESH CLADDING ON STEEL STRUCTURE</p> |
|--|---|

