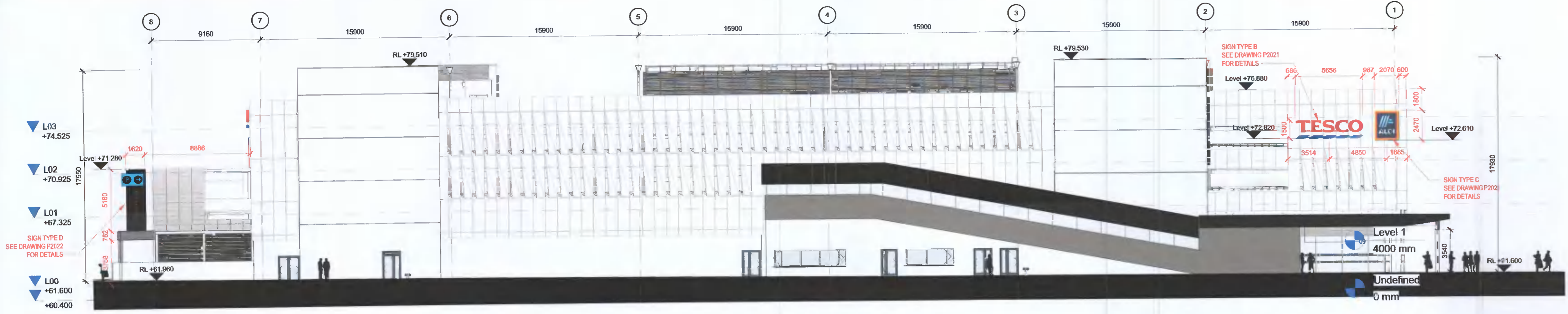
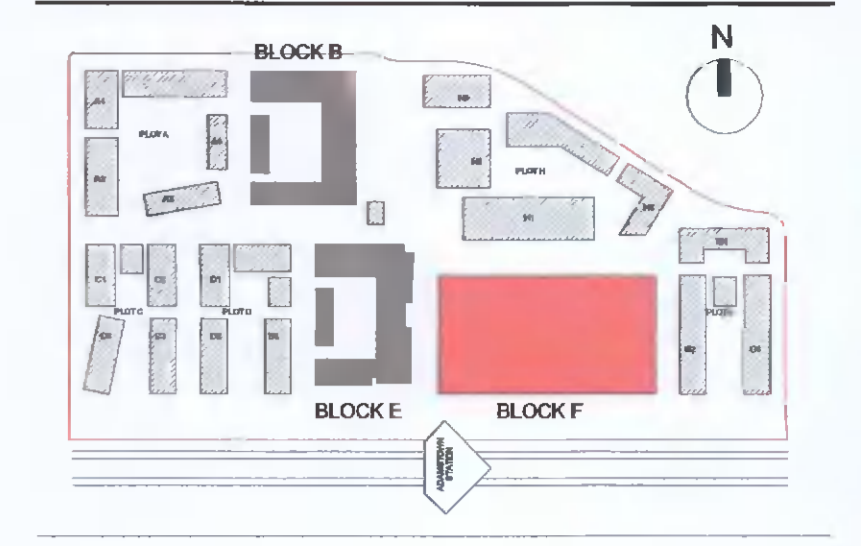


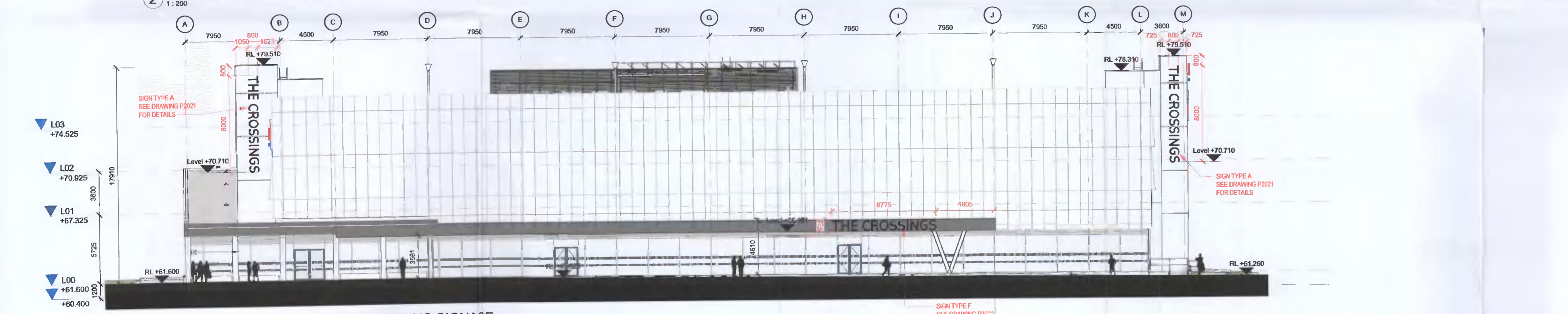
ALL DIMENSIONS TO BE CHECKED ON SITE  
NO DIMENSIONS TO BE SCALED FROM THIS DRAWING  
DRAWING IS TO BE READ IN CONJUNCTION WITH RELEVANT CONSULTANT'S DRAWINGS



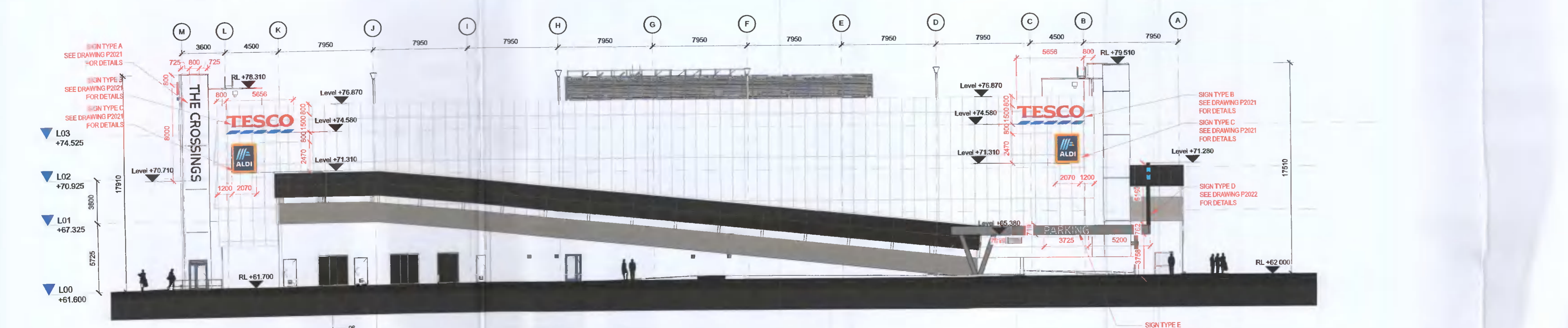
1 GA - ELEVATION - NORTH - PLANNING SIGNAGE  
1:200



2 GA - ELEVATION - SOUTH - PLANNING SIGNAGE  
1:200



3 GA - ELEVATION - WEST - PLANNING SIGNAGE  
1:200



4 GA - ELEVATION - EAST - PLANNING - SIGNAGE  
1:200

REV	DATE	DESCRIPTION	BY	CHK	DRN
P01	16/05/2022	ISSUED FOR PLANNING APPROVAL	BM	CKH	BM

STATUS CODE DESCRIPTION  
**ISSUED FOR PLANNING APPROVAL**

CLIENT  
Quintain Developments Ireland Limited

PROJECT  
Adamstown Station District Centre Block F

DRAWING  
Block F External Elevations - Signage

PROJECT NUMBER  
950746

DATE  
06/10/21

SCALE@ A1:  
1:200

DRAWN/CHECKED:  
Author/Checker

REVISION DRAWING NUMBER  
P01 ADC-HUL-F-XX-DR-A-P2019

STATUS CODE:  
A1

**Henry J Lyons**

Architects + Interiors  
henryjlyons.com

+353 1 888 3333  
info@henryjlyons.com

51-54 Pearse Street  
Dublin D02 KA56

BLOCK F