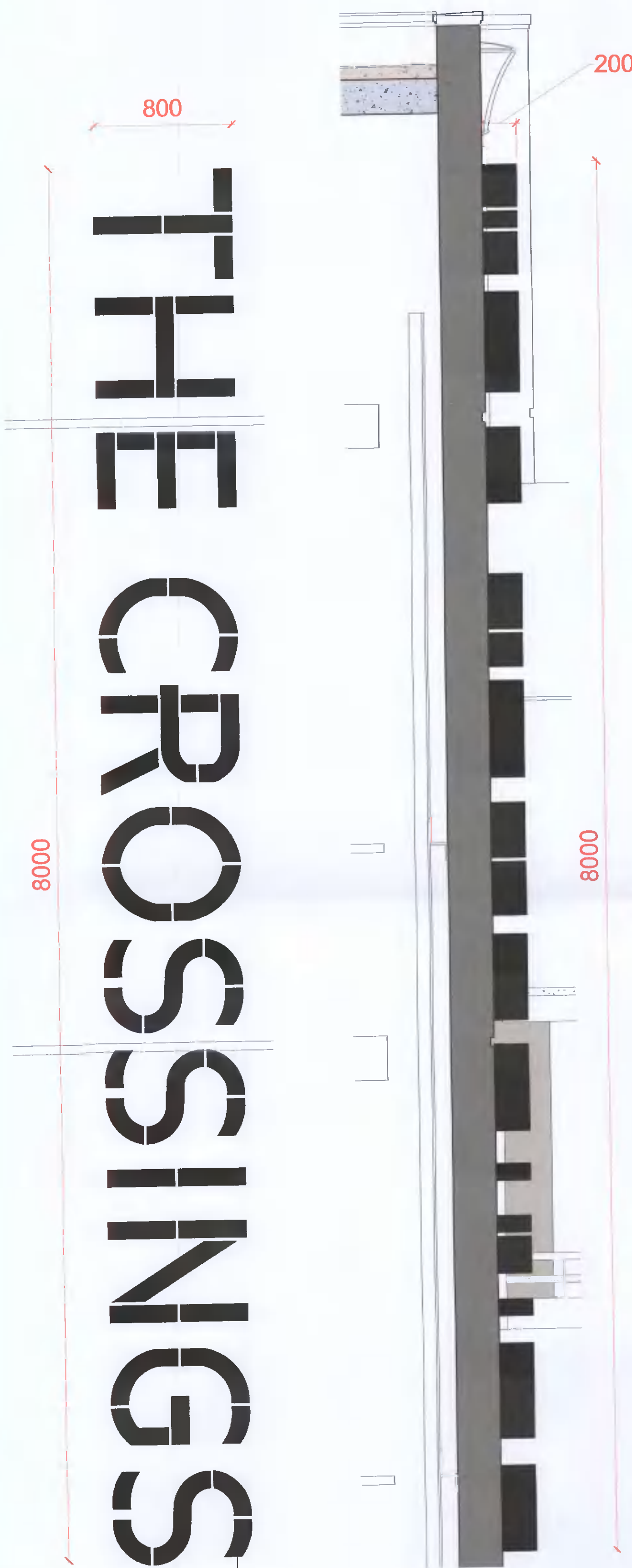


THE CROSSINGS - TYPE A

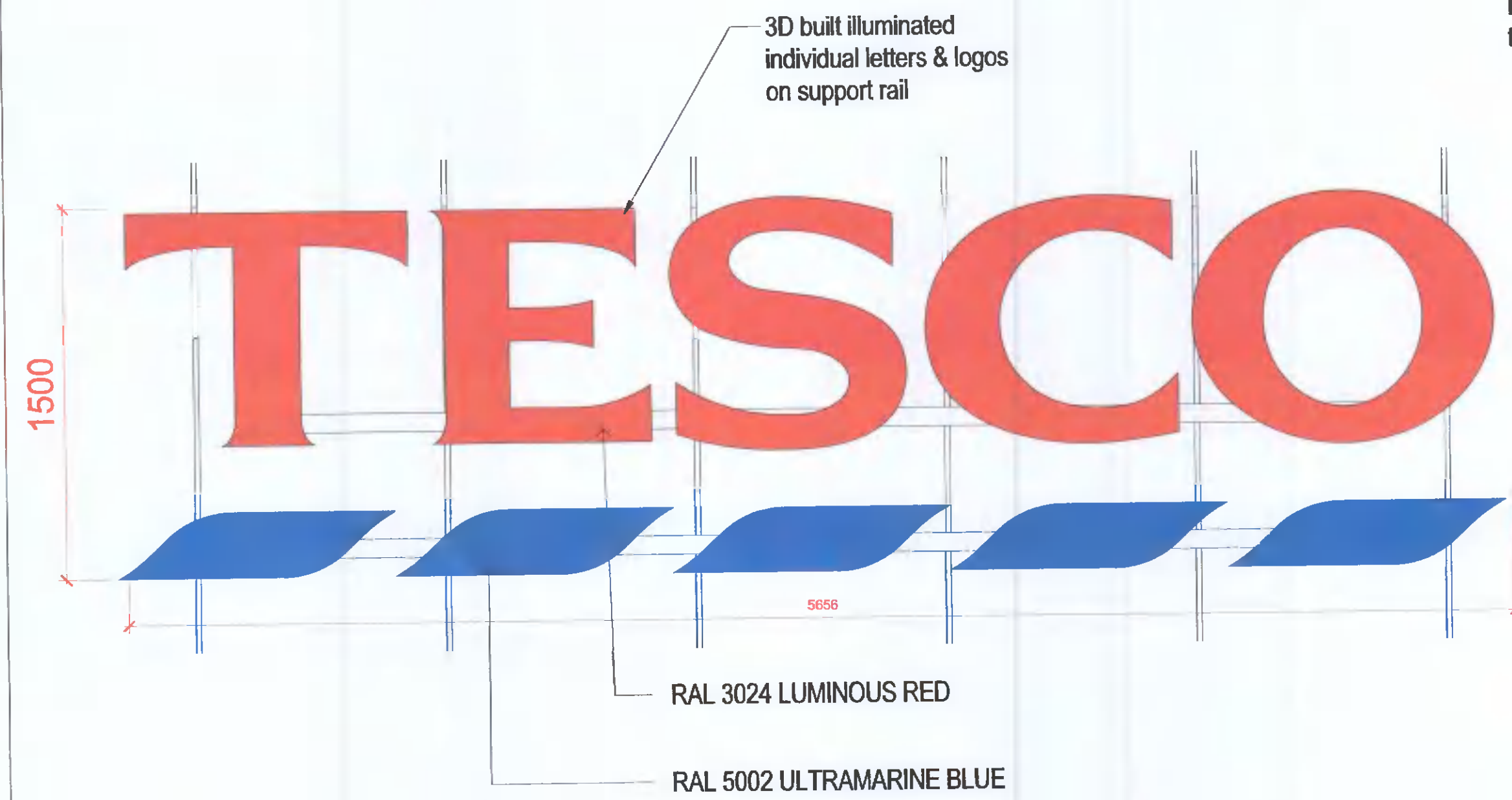


THE CROSSINGS - TYPE A

- 800 x 8000mm
- Depth 200mm
- 3D built up illuminated letters
- 2mm thick aluminium frame in black
- White translucent acrylic to face
- Internal LED lighting
- Fixed to substrate
- Quantity No. = 5
- Colour codes as indicated

RAL 9005 JET BLACK

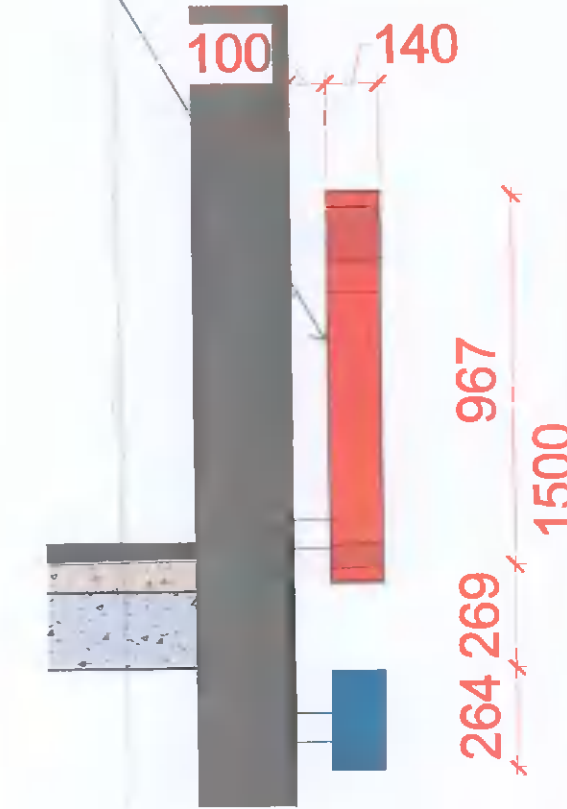
TESCO - TYPE B



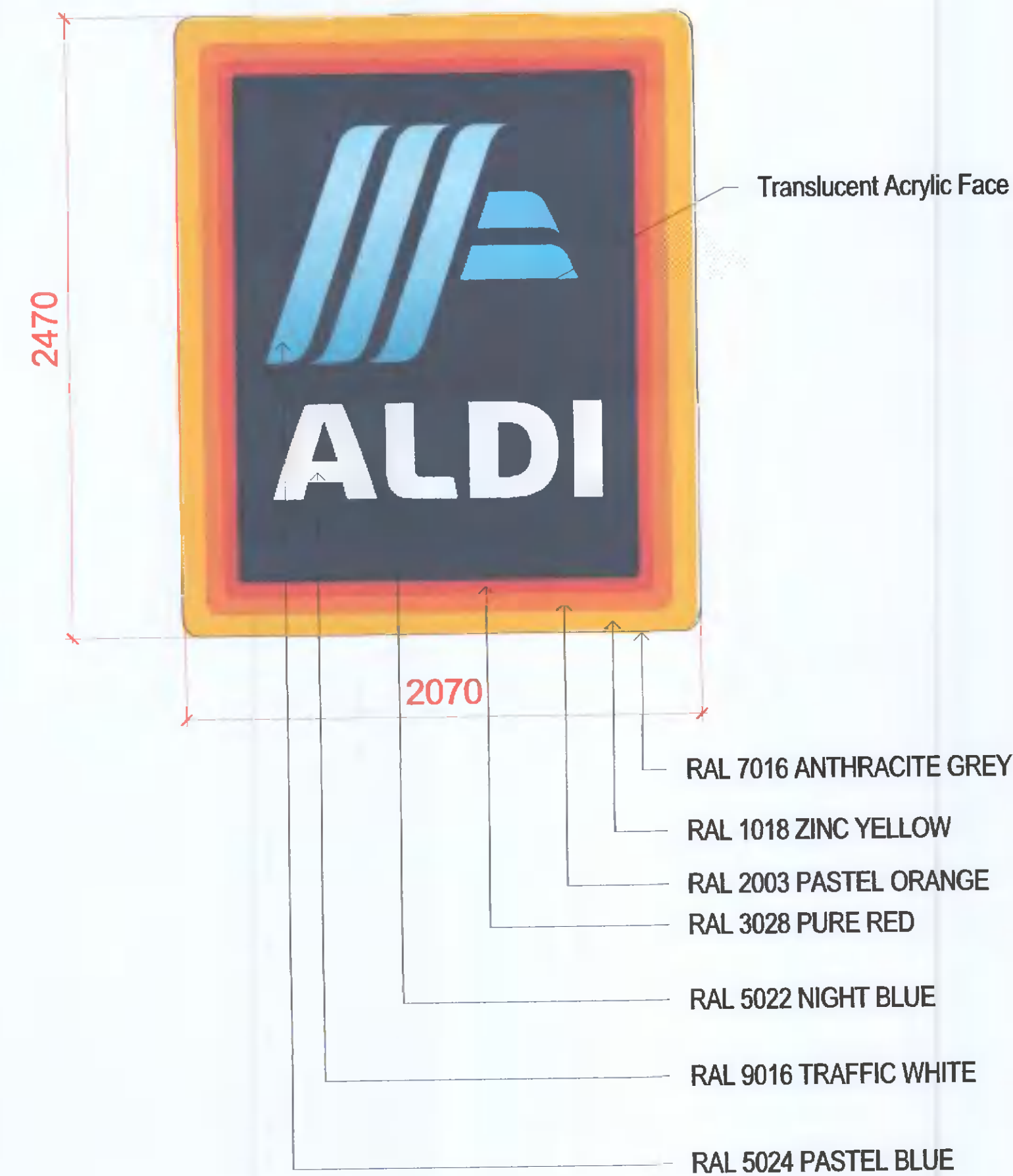
TESCO - TYPE B

- 5656 x 1500mm
- Depth 140mm
- 3D built up illuminated individual letters & symbols
- 2mm thick aluminium frame
- Translucent acrylic to face
- Internal LED lighting
- Fixed to support rail to substrate
- Quantity No. = 4
- Colour codes as indicated

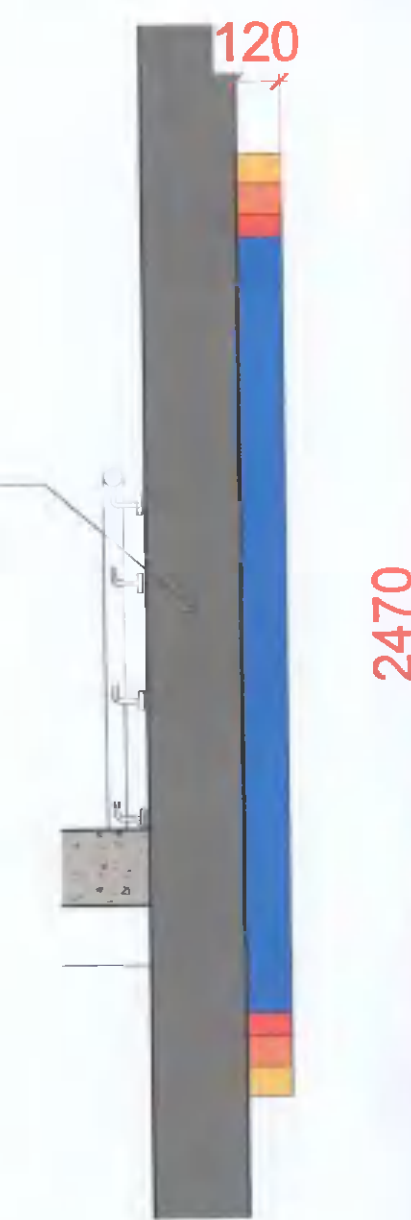
Fixed to support rail to substrate



ALDI - TYPE C



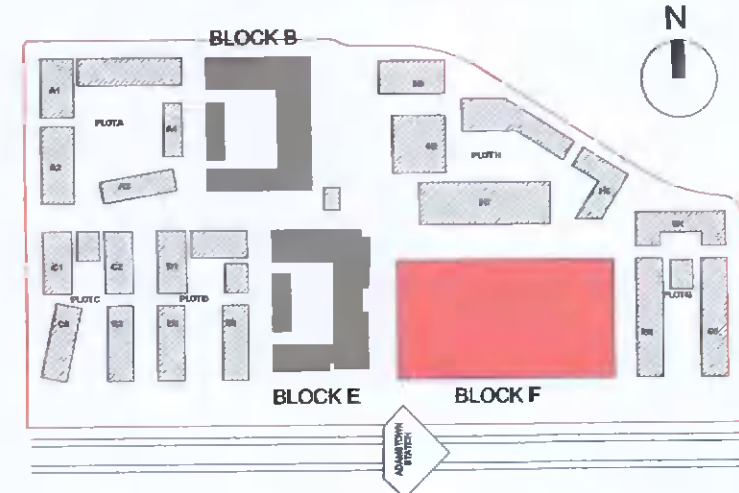
Fixed to substrate



ALDI - TYPE C

- 2400 x 2000
- Depth 120mm
- 2mm thick aluminium frame
- Translucent acrylic to face
- Internal LED lighting
- Fixed to substrate
- Quantity No. = 4
- Colour codes as indicated

ALL DIMENSIONS TO BE CHECKED ON SITE
NO DIMENSIONS TO BE SCALED FROM THIS DRAWING
DRAWING IS TO BE READ IN CONJUNCTION WITH RELEVANT CONSULTANTS DRAWINGS



NOTE
COLOURS INDICATED ARE APPROXIMATE AND ARE DEPENDANT ON THE OWN BRAND SPECIFIC PRINTING PROCESSES OF THE SIGNAGE

REV	DATE	DESCRIPTION	BW	CHK	DRN
P01	16/05/2022	ISSUED FOR PLANNING APPROVAL			

STATUS CODE DESCRIPTION
ISSUED FOR PLANNING APPROVAL

CLIENT
Quintain Developments Ireland Limited

PROJECT
Adamstown Station District Centre Block F

DRAWING
Block F Signage Details (Sheet 1)

PROJECT NUMBER	DATE	REVISION	DRAWING NUMBER	STATUS CODE
950746	06/14/21	P01	ADC-HIL-F-XX-DR-A-P2021	A1

Henry J Lyons

Architecture + Interiors
henryjlyons.com
+353 1 888 3333
info@henryjlyons.com
51-54 Pearse Street
Dublin D02 XA86