

East Elevation Right



Tenant Signs Specifications:

TESCO 1500mm

ALDI - 2470mm

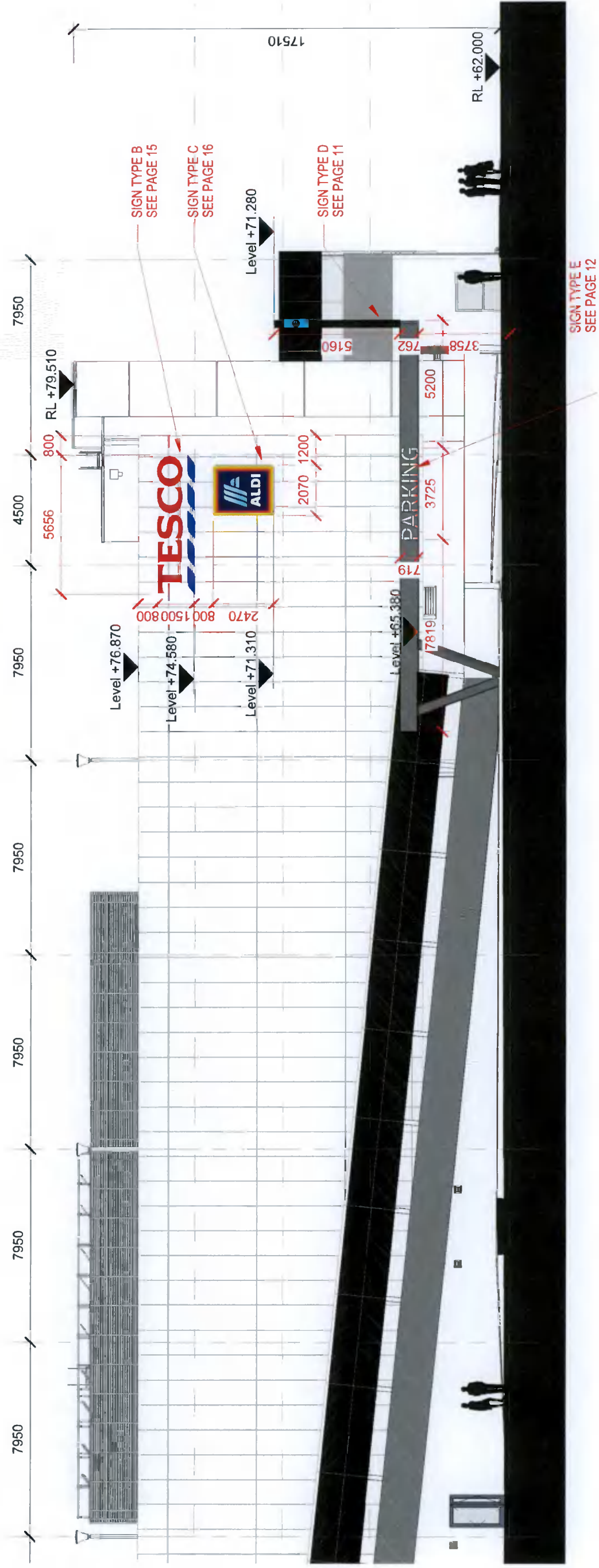
3D Built up illuminated individual letters,

Depth 200mm

Translucent acrylic face

Fixed to substrate

Internal LED lighting



South Elevation



Tenant Signs Specifications:

- TESCO 1500mm
- ALDI - 2470mm
- 3D Built up illuminated individual letters,
- Depth 200mm
- Translucent acrylic face
- Fixed to substrate
- Internal LED lighting



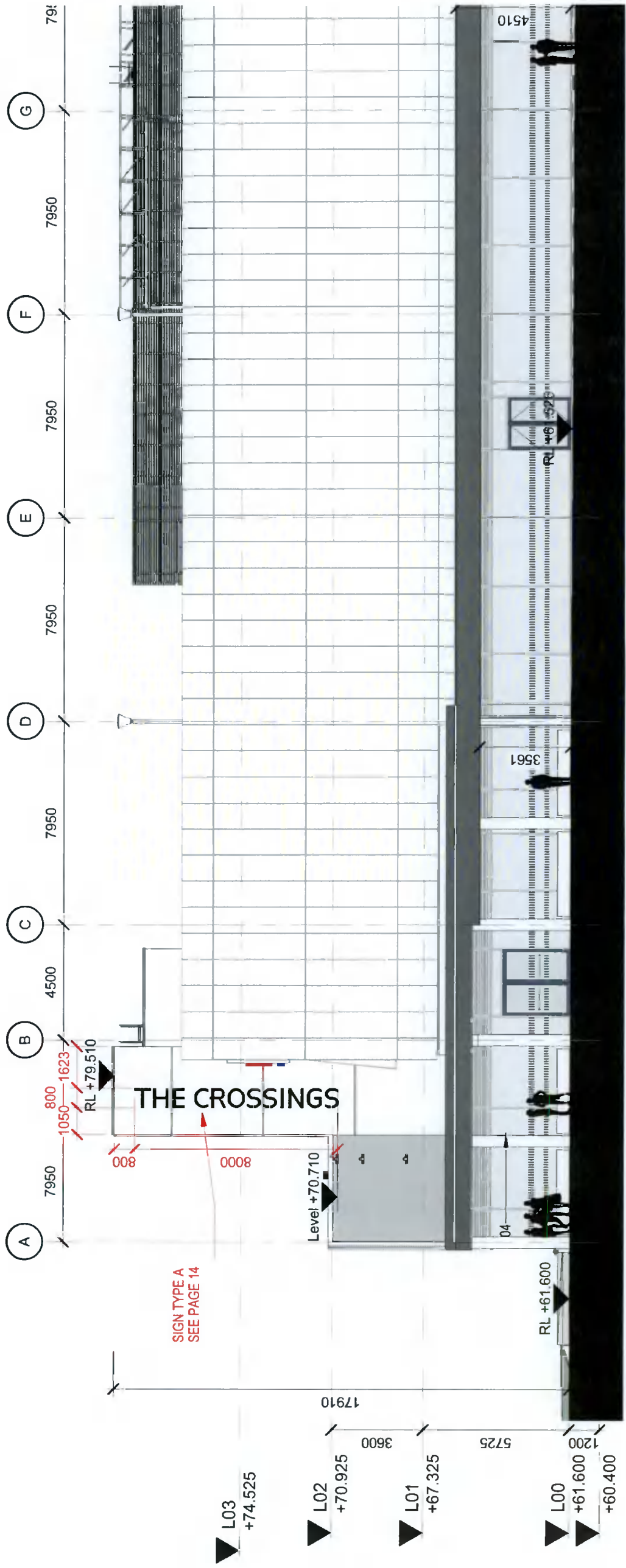
West Elevation
Left

'The Crossings' Type A

Specifications:

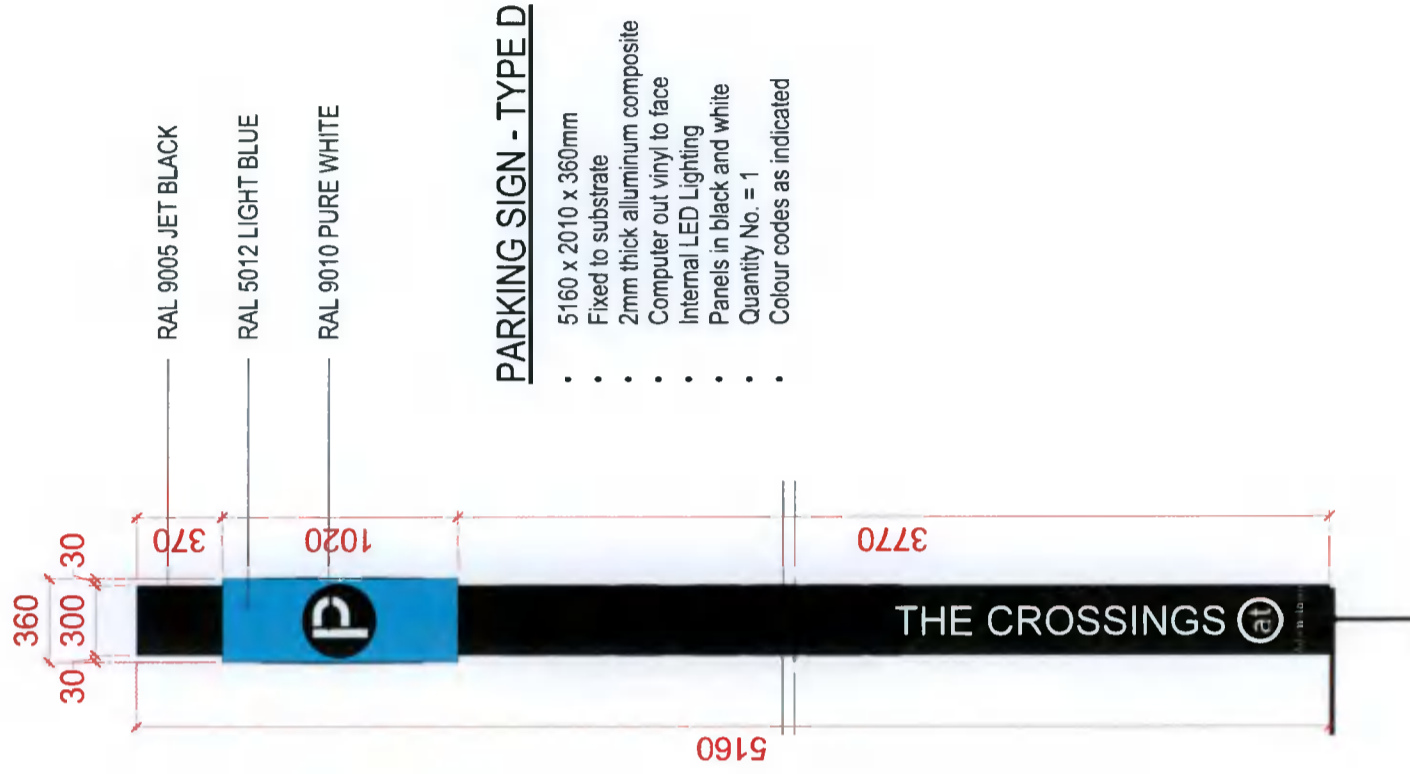
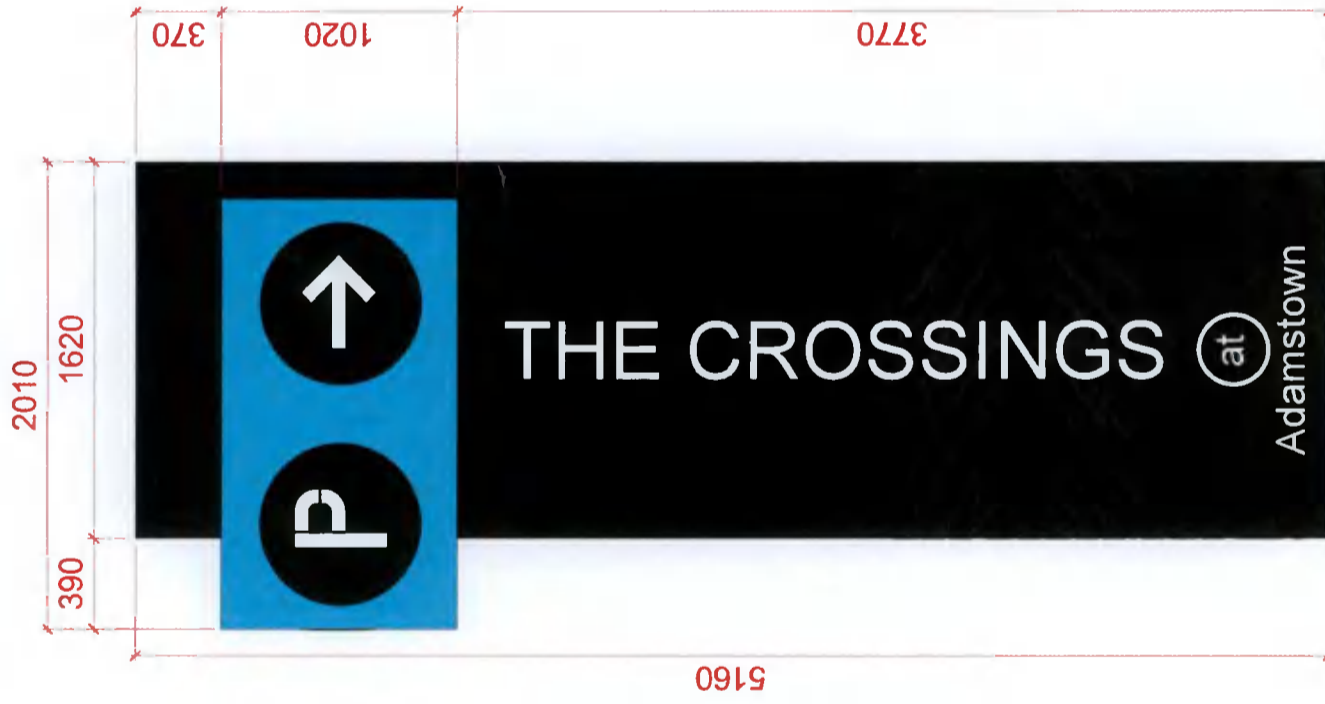
- 800mm x 8000mm
- 3D Built up illuminated individual letters
- Depth 200mm
- Translucent acrylic Edge
- Approx size 3M x 1.5m
- Fixed to substrate
- Internal LED lighting

800 [THE CROSSINGS] 8000



Parking Entrance - Type D

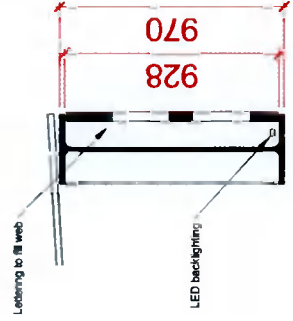
PARKING SIGN - TYPE D



PARKING SIGN - TYPE D

- 5160 x 2010 x 360mm
- Fixed to substrate
- 2mm thick aluminum composite
- Computer out vinyl to face
- Internal LED Lighting
- Panels in black and white
- Quantity No. = 1
- Colour codes as indicated

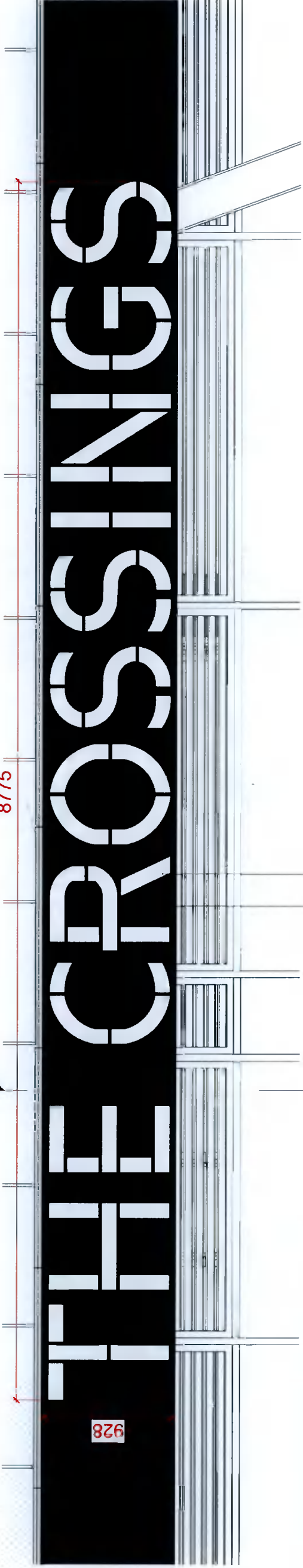
Parking Entrance Sign - Type F



THE CROSSINGS BEAM SIGN - TYPE F



8775



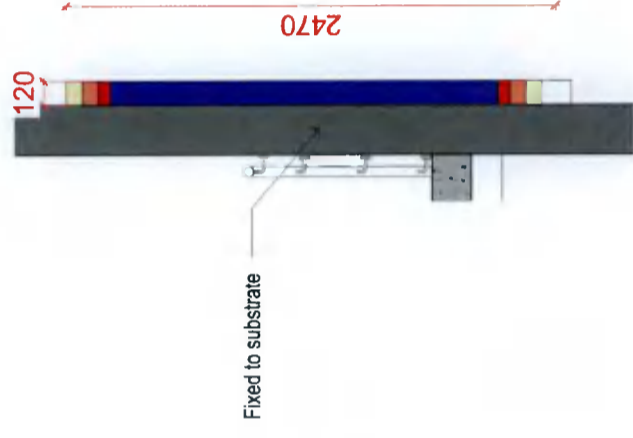
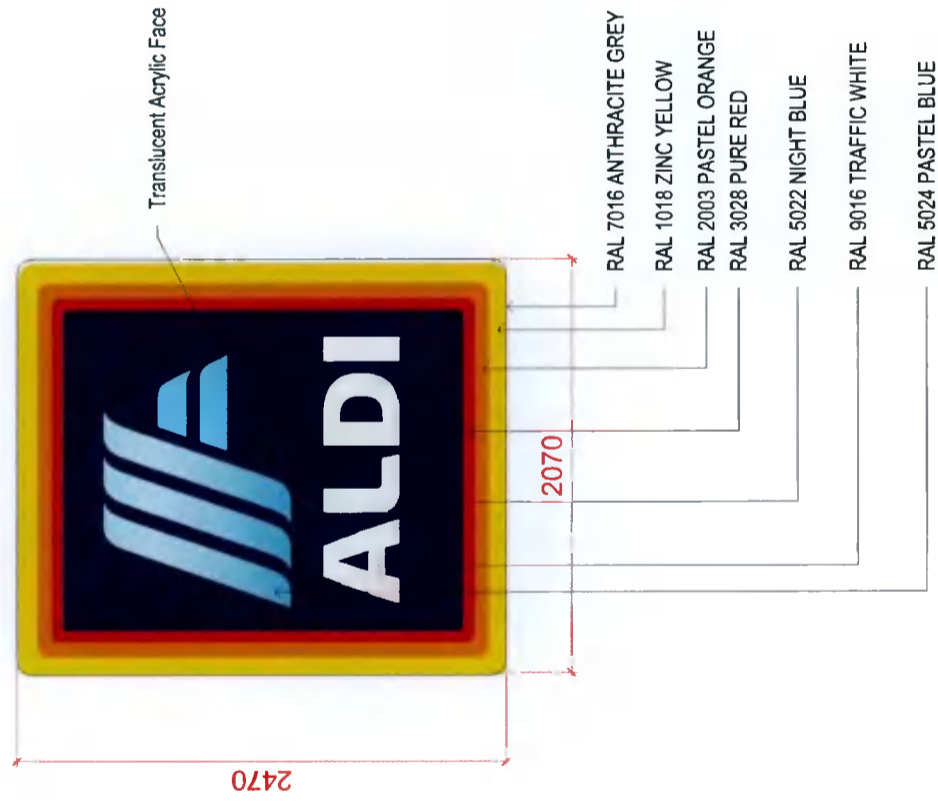
THE CROSSINGS BEAM SIGN - TYPE F

- 8775 x 928mm
- Depth 40mm
- Lettering to fill the beam web
- Aluminium metal cut out
- LED backlighting
- Quantity No. = 1
- Colour codes as indicated

- TEXT
RAL 9016 TRAFFIC WHITE
- BEAM
RAL 7043 TRAFFIC GREY B

Aldi - Type C

ALDI - TYPE C



ALDI - TYPE C

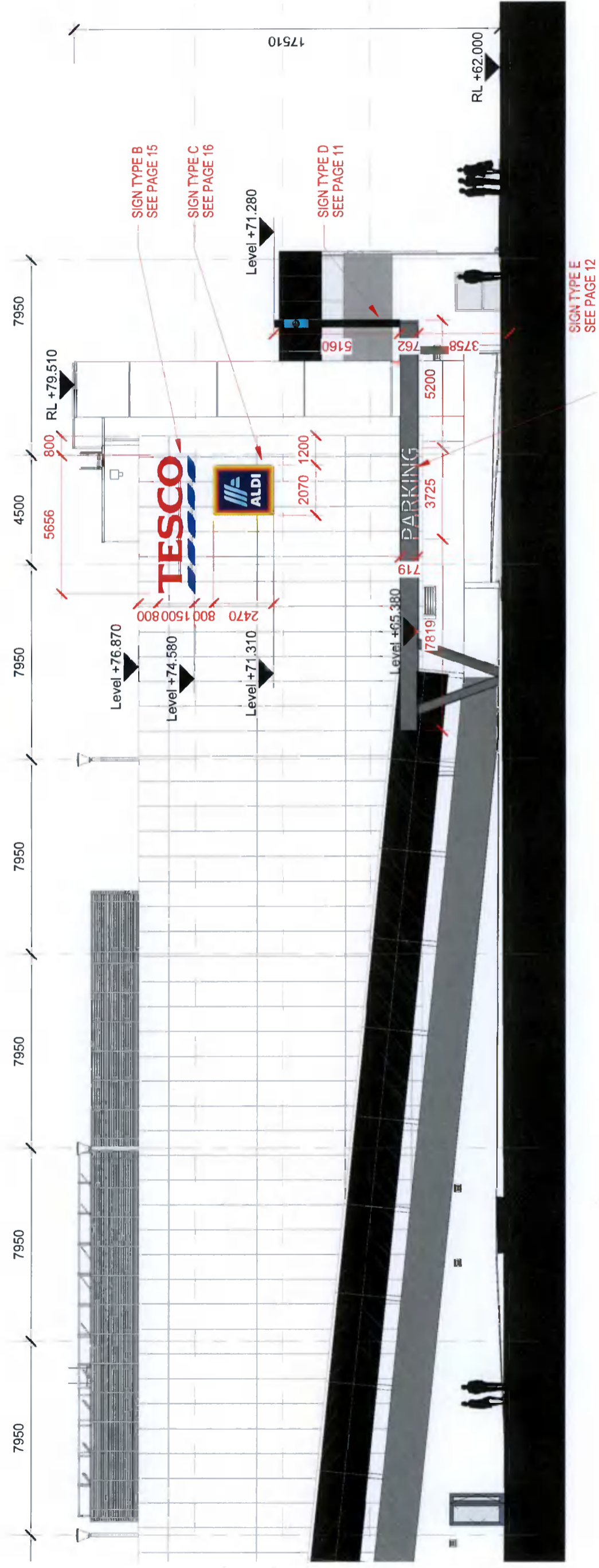
- 2400 x 2000
- Depth 120mm
- 2mm thick aluminium frame
- Translucent acrylic to face
- Internal LED lighting
- Fixed to substrate
- Quantity No. = 4
- Colour codes as indicated

East Elevation Right



Tenant Signs Specifications:

- TESCO 1500mm
- ALDI - 2470mm
- 3D Built up illuminated individual letters,
- Depth 200mm
- Translucent acrylic face
- Fixed to substrate
- Internal LED lighting



South Elevation



- Tenant Signs Specifications:**
 TESCO 1500mm
 ALDI - 2470mm
 3D Built up illuminated individual letters,
 Depth 200mm
 Translucent acrylic face
 Fixed to substrate
 Internal LED lighting



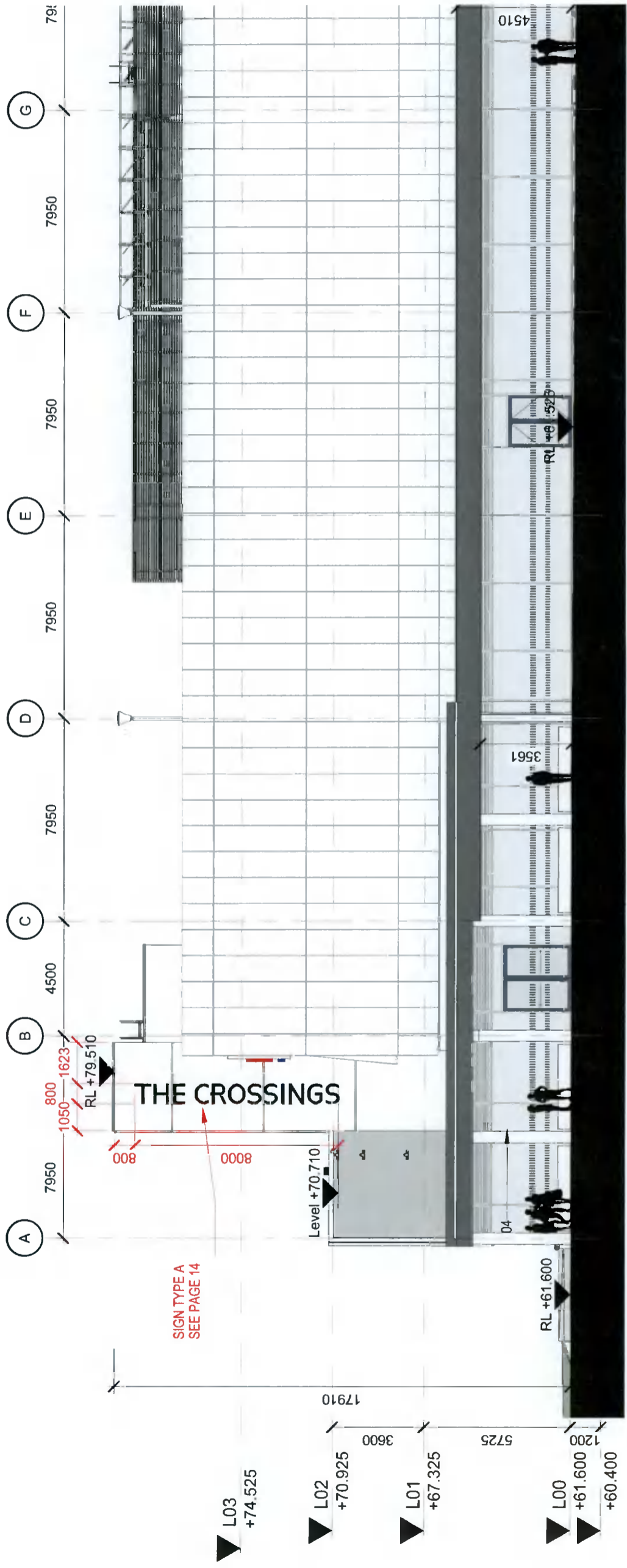
West Elevation
Left

'The Crossings' Type A

Specifications:

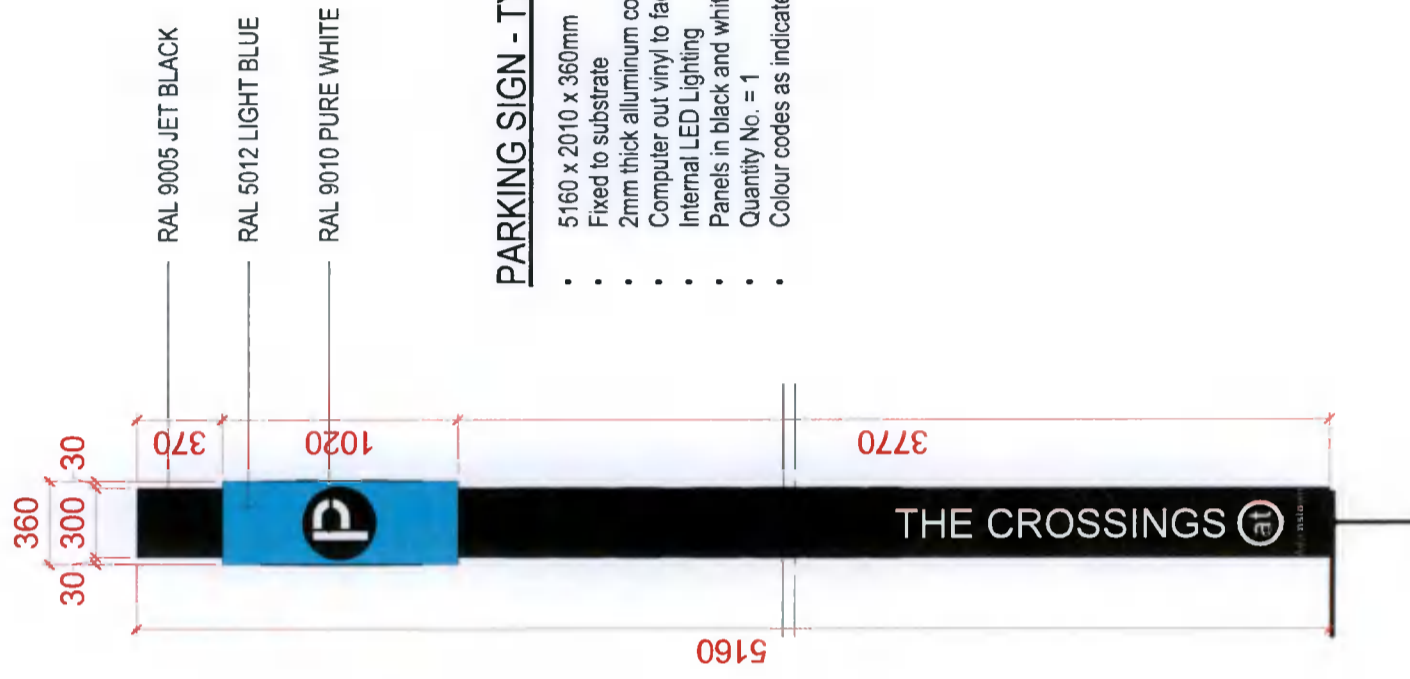
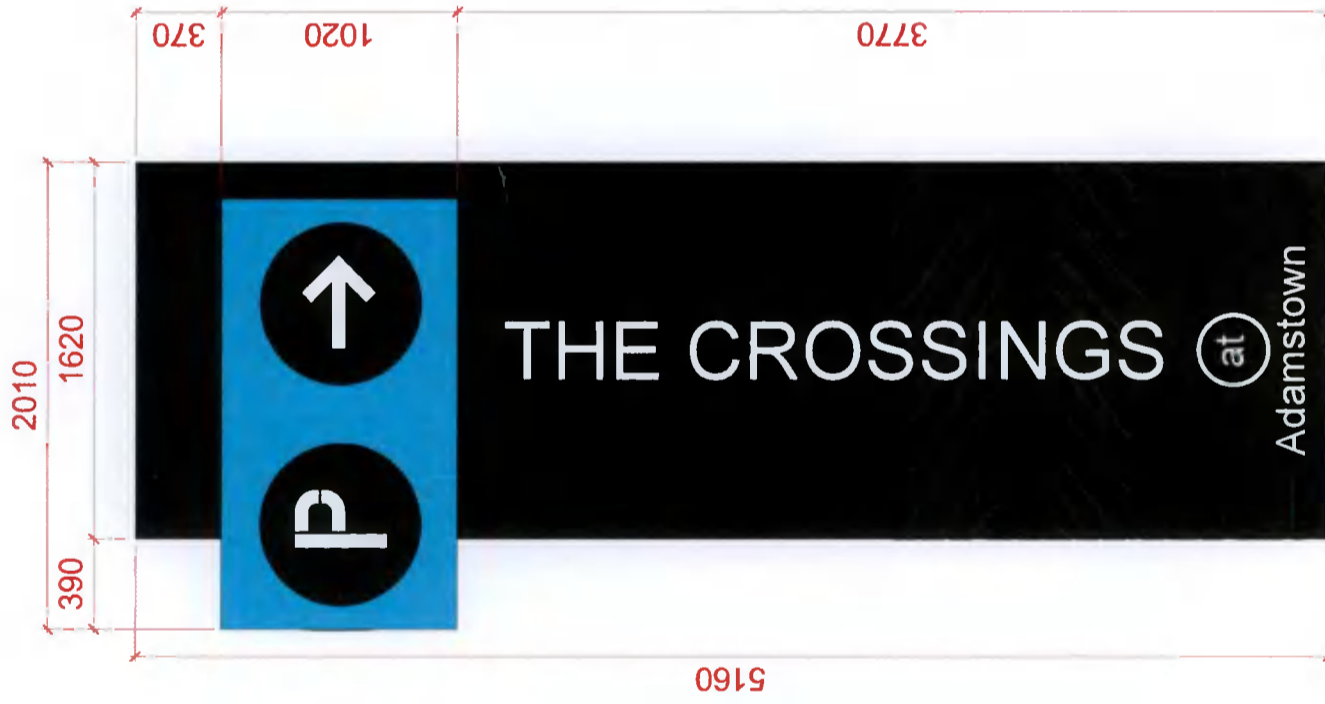
- 800mm x 8000mm
- 3D Built up illuminated individual letters
- Depth 200mm
- Translucent acrylic Edge
- Approx size 3M x 1.5m
- Fixed to substrate
- Internal LED lighting

800 [THE CROSSINGS] 8000



Parking Entrance - Type D

PARKING SIGN - TYPE D



RAL 9005 JET BLACK

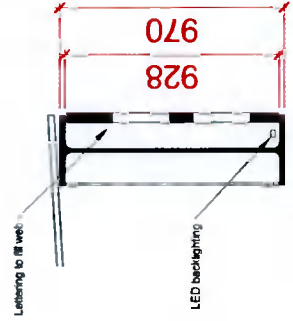
RAL 5012 LIGHT BLUE

RAL 9010 PURE WHITE

PARKING SIGN - TYPE D

- 5160 x 2010 x 360mm
- Fixed to substrate
- 2mm thick aluminum composite
- Computer out vinyl to face
- Internal LED Lighting
- Panels in black and white
- Quantity No. = 1
- Colour codes as indicated

Parking Entrance Sign - Type F



THE CROSSINGS BEAM SIGN - TYPE F



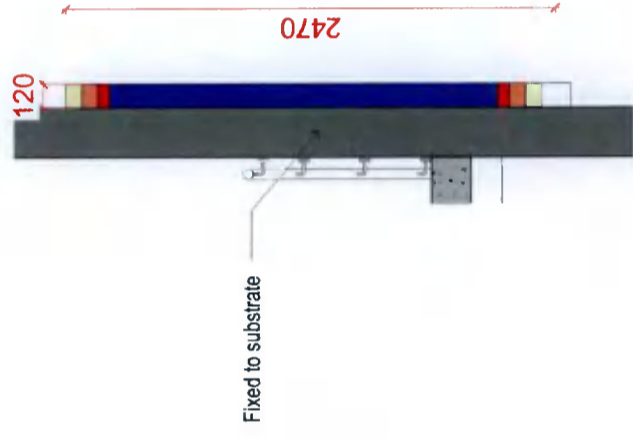
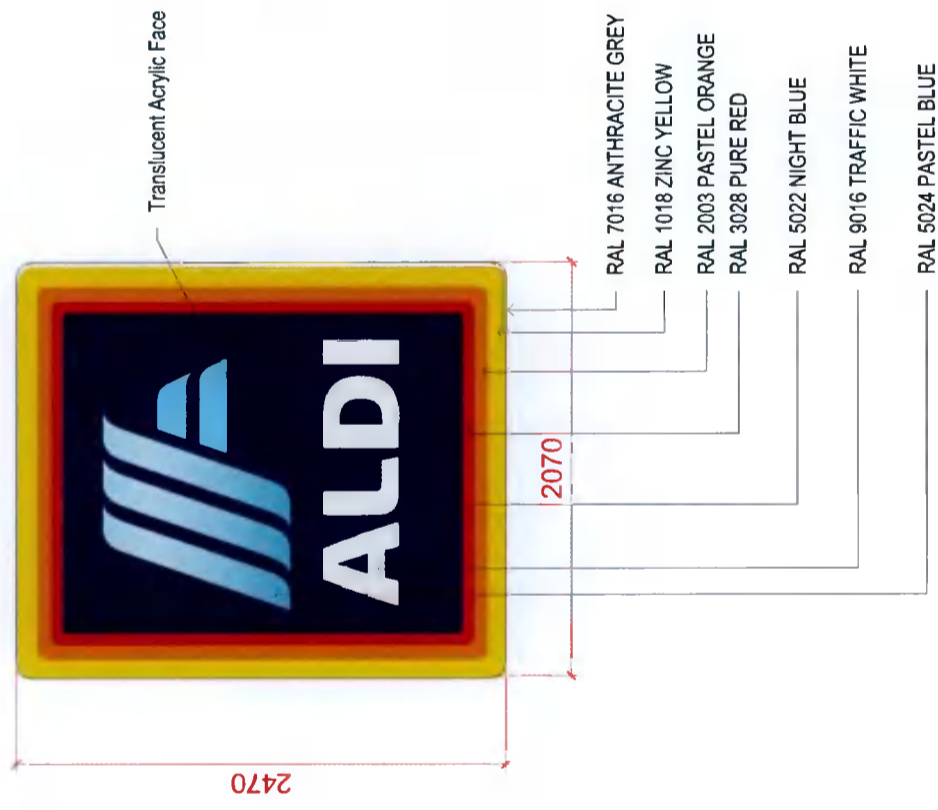
THE CROSSINGS BEAM SIGN - TYPE F

- 8775 x 928mm
- Depth 40mm
- Lettering to fill the beam web
- Aluminium metal cut out
- LED backlighting
- Quantity No. = 1
- Colour codes as indicated

- TEXT
RAL 9016 TRAFFIC WHITE
- BEAM
RAL 7043 TRAFFIC GREY B

Aldi - Type C

ALDI - TYPE C



ALDI - TYPE C

- 2400 x 2000
- Depth 120mm
- 2mm thick aluminium frame
- Translucent acrylic to face
- Internal LED lighting
- Fixed to substrate
- Quantity No. = 4
- Colour codes as indicated