

**PREVIOUSLY APPROVED**

STATUS :

**PLANNING**

THIS DRAWING HAS BEEN PREPARED SOLELY FOR THE PURPOSE OF PLANNING PERMISSION. THIS DRAWING IS NOT TO BE RELIED UPON FOR CONSTRUCTION AND NO GUARANTEE IS GIVEN AS TO ITS SUITABILITY FOR CONSTRUCTION.

**FINISHES LEGEND**

- 01 Brickwork to Architect's approval.
- 02 Pressed Metal Cladding to Roof/ Penthouse
- 03 External grade aluminium windows/ frames with clear glazing, to selected colour to Architect's approval.
- 04 External grade aluminium windows/ frames with Opaque Glazing, to selected colour to Architect's approval.
- 05 External grade aluminium windows/ frames with Grey Glass Glazing, to Architect's approval.
- 06 Spandrel Panel to Glazing at Floor levels.
- 07 External grade timber/Aluminium Doors / Frames with clear glazing, to selected colour.
- 08 Painted Napped Render Finish
- 09 Pressed Aluminium Metal Cladding
- 10 Precast RC Cills
- 11 Precast RC Parapet Capping
- 12 Opaque Glazed Balustrade
- 13 Raised Letter Signage / Panel
- 14 Painted Hardwood Doors to Car Park Access
- 15 Opaque Glazed Screen

REV.	DATE	BY	DESCRIPTION	CHKD
A	12/02/22	DM	ISSUED FOR PLANNING	DM

**NOTE**  
 © This drawing is copyright. Figured dimensions only to be taken from this drawing. All dimensions to be checked on site. Architects to be informed immediately of any discrepancies before work proceeds.

**DOUGLAS WALLACE | CONSULTANTS**

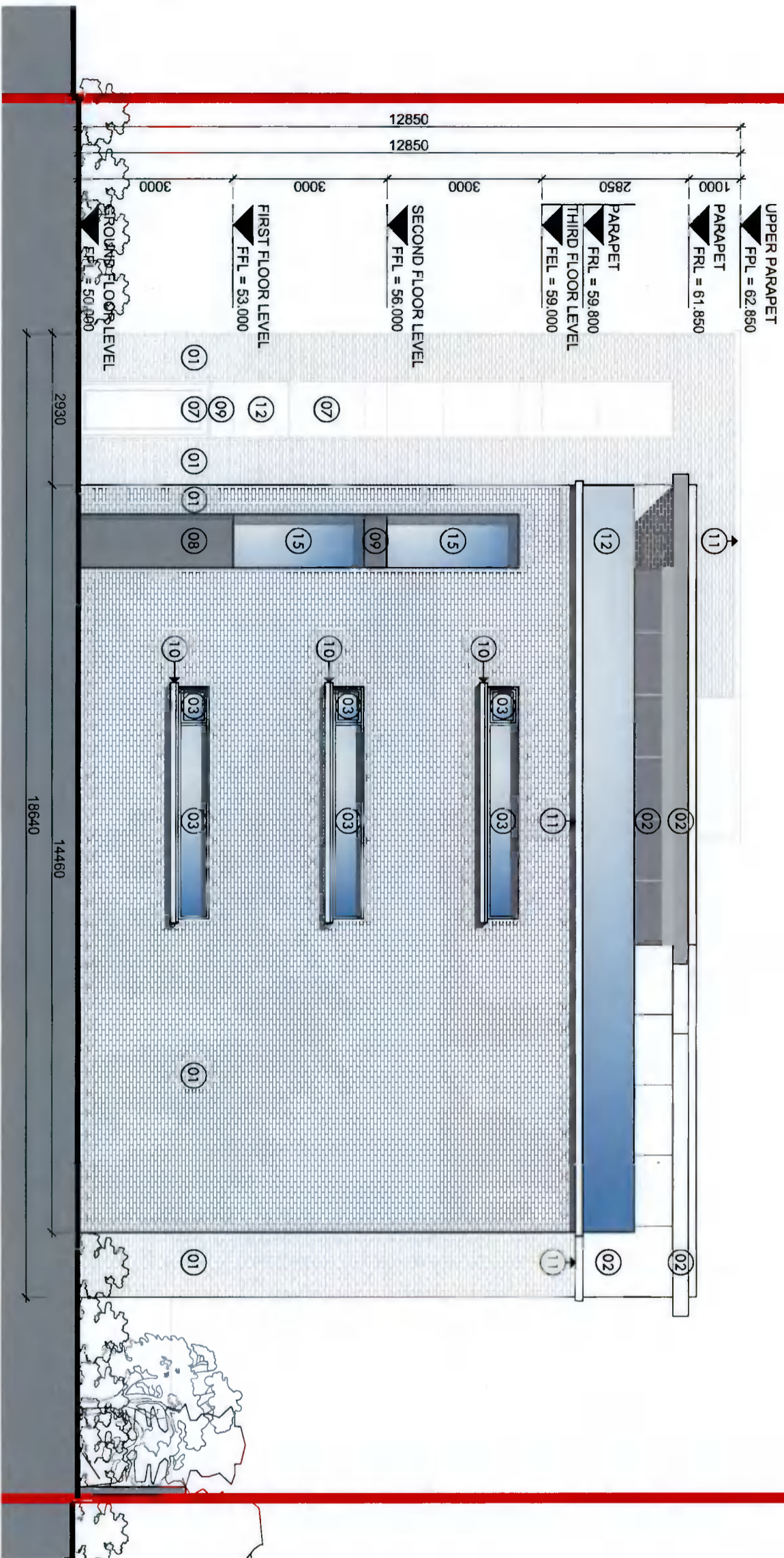
St Kevin's Female School, 1 Grantham Street, Dublin 8  
 T +353-1-478-7500 F +353-1-478-7590 Email@ddouglaswallace.com

**Clients** CARL PROPERTIES LIMITED

**Project** PROPOSED RESIDENTIAL DEVELOPMENT AT 21 WHITEHALL ROAD WEST, DUBLIN 12

**Title** PREVIOUSLY APPROVED - PROPOSED NORTH SIDE ELEVATION

PROJ. NO.	DRG. NO.	REVISION	
5368	PL - 503	A	
DRAWN	SCALE	CHECKED BY	DATE
DM	1:100 @ A3	DM	APRIL 2022



01 PROPOSED NORTH SIDE ELEVATION

1:100 @ A3

= EXTENTS OF PLANNING APPLICATION SITE

**PREVIOUSLY APPROVED**

STATUS :

**PLANNING**

THIS DRAWING HAS BEEN PREPARED SOLELY FOR THE PURPOSE OF PLANNING PERMISSION. THIS DRAWING IS NOT TO BE RELIED UPON FOR CONSTRUCTION AND NO GUARANTEE IS GIVEN AS TO ITS SUITABILITY FOR CONSTRUCTION

**FINISHES LEGEND**

- 01 Brickwork to Architect's approval.
- 02 Pressed Metal Cladding to Roof/ Penthouse
- 03 External grade aluminium windows/ frames with clear glazing, to selected colour to Architect's approval.
- 04 External grade aluminium windows/ frames with Opaque Glazing, to selected colour to Architect's approval.
- 05 External grade aluminium windows/ frames with Grey Glass Glazing, to Architect's approval.
- 06 Spandrel Panel to Glazing at Floor levels.
- 07 External grade timber/Aluminium Doors / Frames with clear glazing, to selected colour.
- 08 Painted Napped Render Finish
- 09 Pressed Aluminium Metal Cladding
- 10 Precast RC Clills
- 11 Precast RC Parapet Capping
- 12 Opaque Glazed Balustrade
- 13 Raised Letter Signage / Panel
- 14 Pressed Up & Over Metal Doors to Car Park Access
- 15 Opaque Glazed Screen

REV	DATE	BY	DESCRIPTION	CHKD
A	12/05/22	DM	ISSUED FOR PLANNING	DM

**NOTE**  
 © This drawing is copyright. Figured dimensions only to be taken from this drawing. All dimensions to be checked on site. Architects to be informed immediately of any discrepancies before work proceeds.

**DOUGLAS WALLACE | CONSULTANTS**

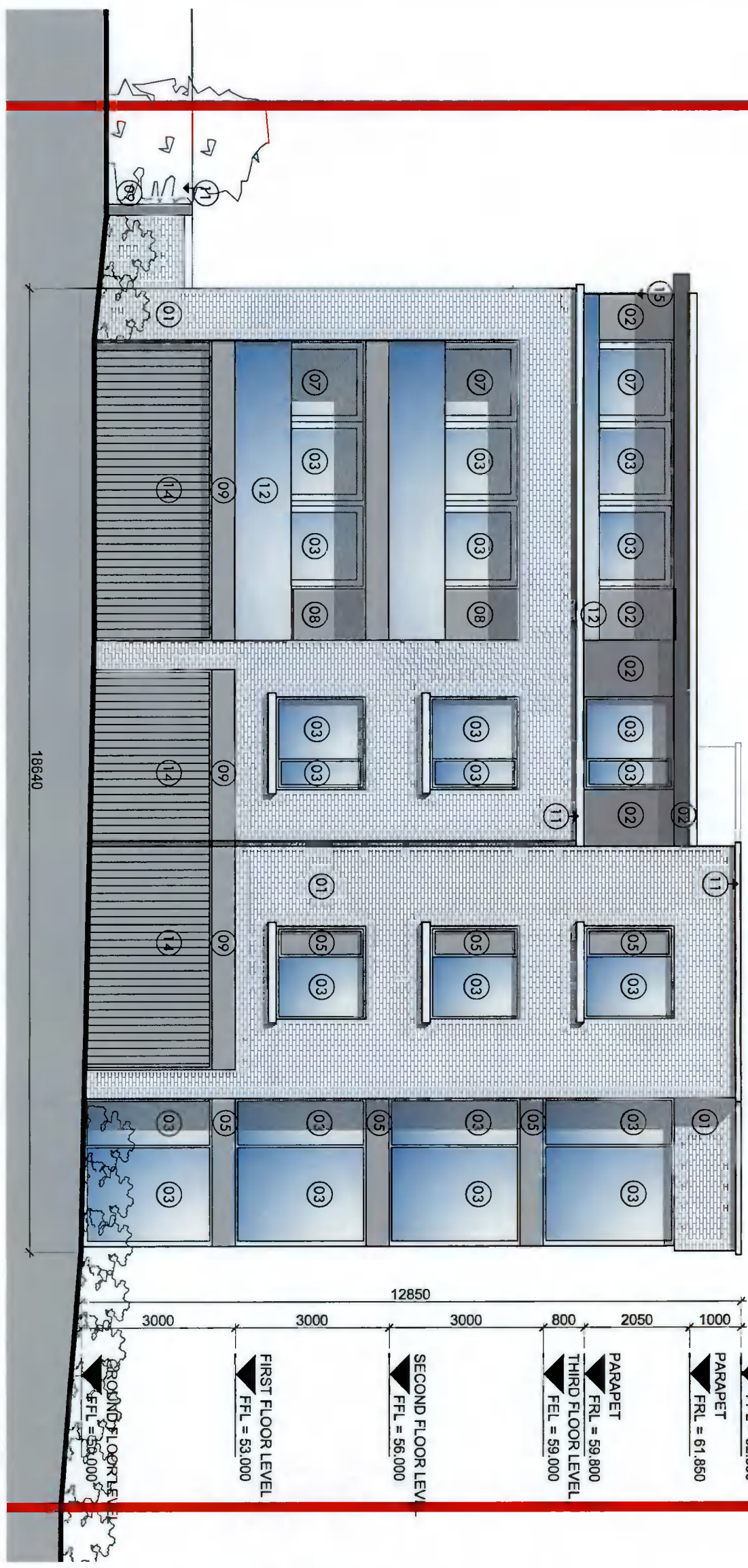
St. Kevin's Female School . 1 Grantham Street . Dublin 8  
 T +353-1-478-7500 F +353-1-478-7590 E info@douglaswallace.com

**CLIENTS**  
 CARL PROPERTIES LIMITED

**PROJECT**  
 PROPOSED RESIDENTIAL DEVELOPMENT AT 21 WHITEHALL ROAD WEST, DUBLIN 12

**TITLE**  
 PREVIOUSLY APPROVED - PROPOSED SOUTH SIDE ELEVATION

PROJ. NO.	DRG. NO.	REVISION
5368	PL - 502	A
DRAWN	SCALE	CHECKED BY
DM	1:100 @ A3	DM
		DATE
		APRIL 2022



01 PROPOSED SOUTH SIDE ELEVATION  
 ELEVATION TO PUBLIC OPEN SPACE  
 1:100 @ A3

— = EXTENTS OF PLANNING APPLICATION SITE

# PREVIOUSLY APPROVED

STATUS :

## PLANNING

THIS DRAWING HAS BEEN PREPARED SOLELY FOR THE PURPOSE OF PLANNING PERMISSION. THIS DRAWING IS NOT TO BE RELIED UPON FOR CONSTRUCTION AND NO GUARANTEE IS GIVEN AS TO ITS SUITABILITY FOR CONSTRUCTION.

### FINISHES LEGEND

- 01 Brickwork to Architect's approval.
- 02 Pressed Metal Cladding to Roof/ Penthouse
- 03 External grade aluminium windows/ frames with clear glazing, to selected colour to Architect's approval.
- 04 External grade aluminium windows/ frames with Opaque Glazing, to selected colour to Architect's approval.
- 05 External grade aluminium windows/ frames with Grey Glass Glazing, to Architect's approval.
- 06 Spandrel Panel to Glazing at Floor levels.
- 07 External grade timber/Aluminium Doors / Frames with clear glazing, to selected colour.
- 08 Painted Napped Render Finish
- 09 Pressed Aluminium Metal Cladding
- 10 Precast RC Gills
- 11 Precast RC Parapet Capping
- 12 Opaque Glazed Balustrade
- 13 Raised Letter Signage / Panel
- 14 Painted Hardwood Doors to Car Park Access
- 15 Opaque Glazed Screen

REV	DATE	BY	DESCRIPTION	CHKD
A	12/22	DM	ISSUED FOR PLANNING	DM

**NOTE**  
 © This drawing is copyright. Figured dimensions only to be taken from this drawing. All dimensions to be checked on site. Architects to be informed immediately of any discrepancies before work proceeds.

### DOUGLAS WALLACE | CONSULTANTS

St. Kevin's Female School, 1 Grantham Street, Dublin 8  
 T+353-1-478-7500 F+353-1-478-7590 E:info@douglaswallace.com

**CLIENTS** CARL PROPERTIES LIMITED

**PROJECT** PROPOSED RESIDENTIAL DEVELOPMENT AT 21 WHITEHALL ROAD WEST, DUBLIN 12

**TITLE** PREVIOUSLY APPROVED - PROPOSED FRONT (EAST) ELEVATION

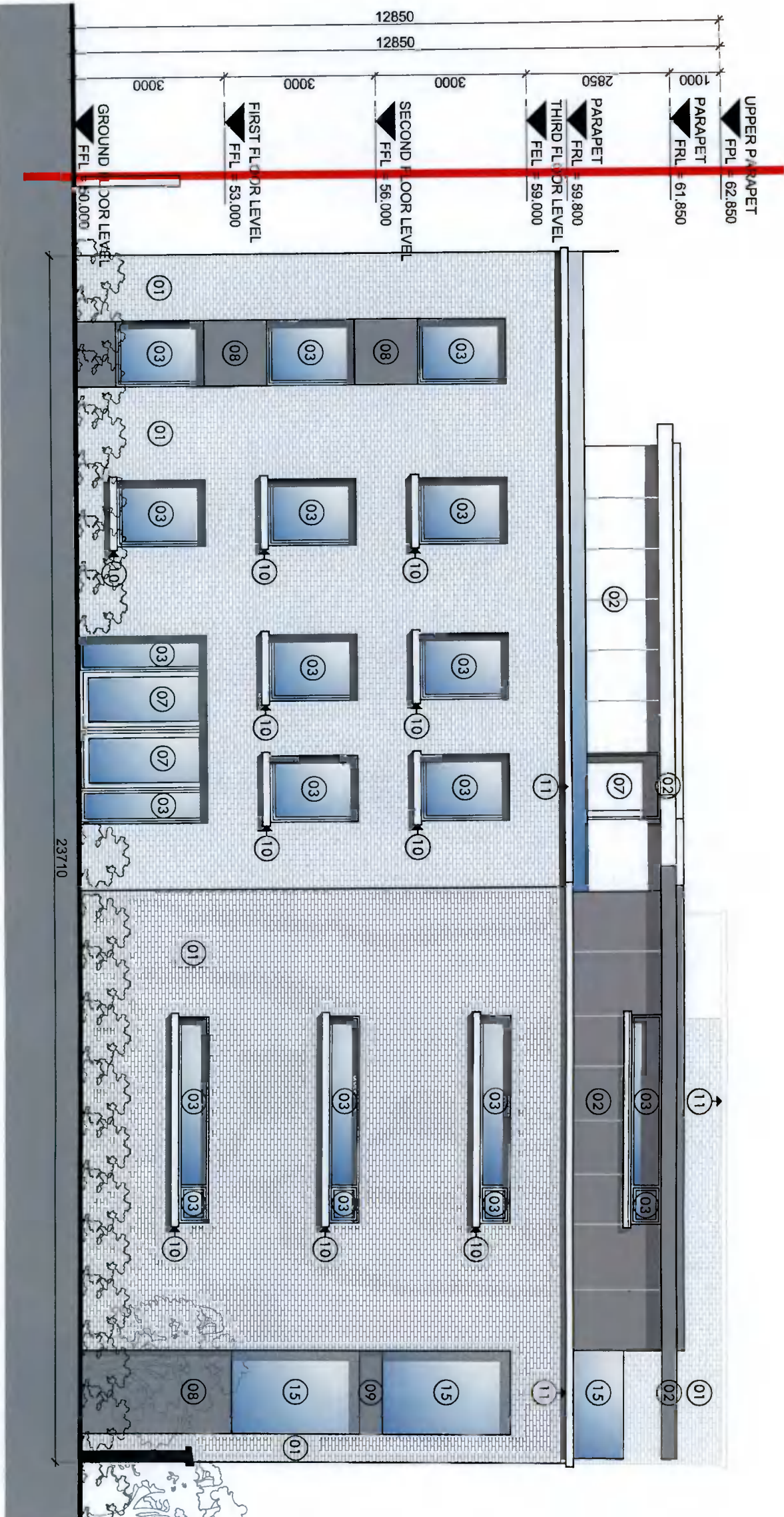
PROJ. NO.	DRG. NO.	REVISION	
5368	PL - 500	A	
DRAWN	SCALE	CHECKED BY	DATE
DM	1:100 @ A3	DM	APRIL 2022



01 PROPOSED FRONT ELEVATION  
 ELEVATION TO WHITEHALL ROAD WEST STREETScape  
 1:100 @ A3

— = EXTENTS OF PLANNING APPLICATION SITE

# PREVIOUSLY APPROVED



## PROPOSED REAR (WEST) ELEVATION

01 ELEVATION TO WELLINGTON COURT APARTMENT COMPLEX  
1:100 @ A3

= EXTENTS OF PLANNING APPLICATION SITE

STATUS :

# PLANNING

THIS DRAWING HAS BEEN PREPARED SOLELY FOR THE PURPOSE OF PLANNING PERMISSION. THIS DRAWING IS NOT TO BE RELIED UPON FOR CONSTRUCTION AND NO GUARANTEE IS GIVEN AS TO ITS SUITABILITY FOR CONSTRUCTION.

### FINISHES LEGEND

- 01 Brickwork to Architect's approval.
- 02 Pressed Metal Cladding to Roof / Penthouse
- 03 External grade aluminium windows/ frames with clear glazing, to selected colour to Architect's approval.
- 04 External grade aluminium windows/ frames with Opaque Glazing, to selected colour to Architect's approval.
- 05 External grade aluminium windows/ frames with Grey Glass Glazing, to Architect's approval.
- 06 Spandrel Panel to Glazing at Floor levels.
- 07 External grade timber/Aluminium Doors / Frames with clear glazing, to selected colour.
- 08 Painted Napped Render Finish
- 09 Pressed Aluminium Metal Cladding
- 10 Precast RC Cills
- 11 Precast RC Parapet Capping
- 12 Opaque Glazed Balustrade
- 13 Raised Letter Signage / Panel
- 14 Painted Hardwood Doors to Car Park Access
- 15 Opaque Glazed Screen

REV.	DATE	BY	DESCRIPTION	CHKD
A	12.05.22	DM	ISSUED FOR PLANNING	DM

**NOTE**  
© This drawing is copyright. Figured dimensions only to be taken from this drawing. All dimensions to be checked on site. Architects to be informed immediately of any discrepancies before work proceeds.

### DOUGLAS WALLACE | CONSULTANTS

St. Kevin's Female School, 1 Grantham Street, Dublin 8  
T +353-1-478-7500 F +353-1-478-7590 E info@douglaswallace.com

**CLIENTS** CARL PROPERTIES LIMITED

**PROJECT** PROPOSED RESIDENTIAL DEVELOPMENT AT 21 WHITEHALL ROAD WEST, DUBLIN 12

**TITLE** PREVIOUSLY APPROVED - PROPOSED REAR (WEST) ELEVATION

PROJ. NO.	DRG. NO.	REVISION
5368	PL - 501	A

DRAWN	SCALE	CHECKED BY	DATE
DM	1:100 @ A3	DM	APRIL 2022