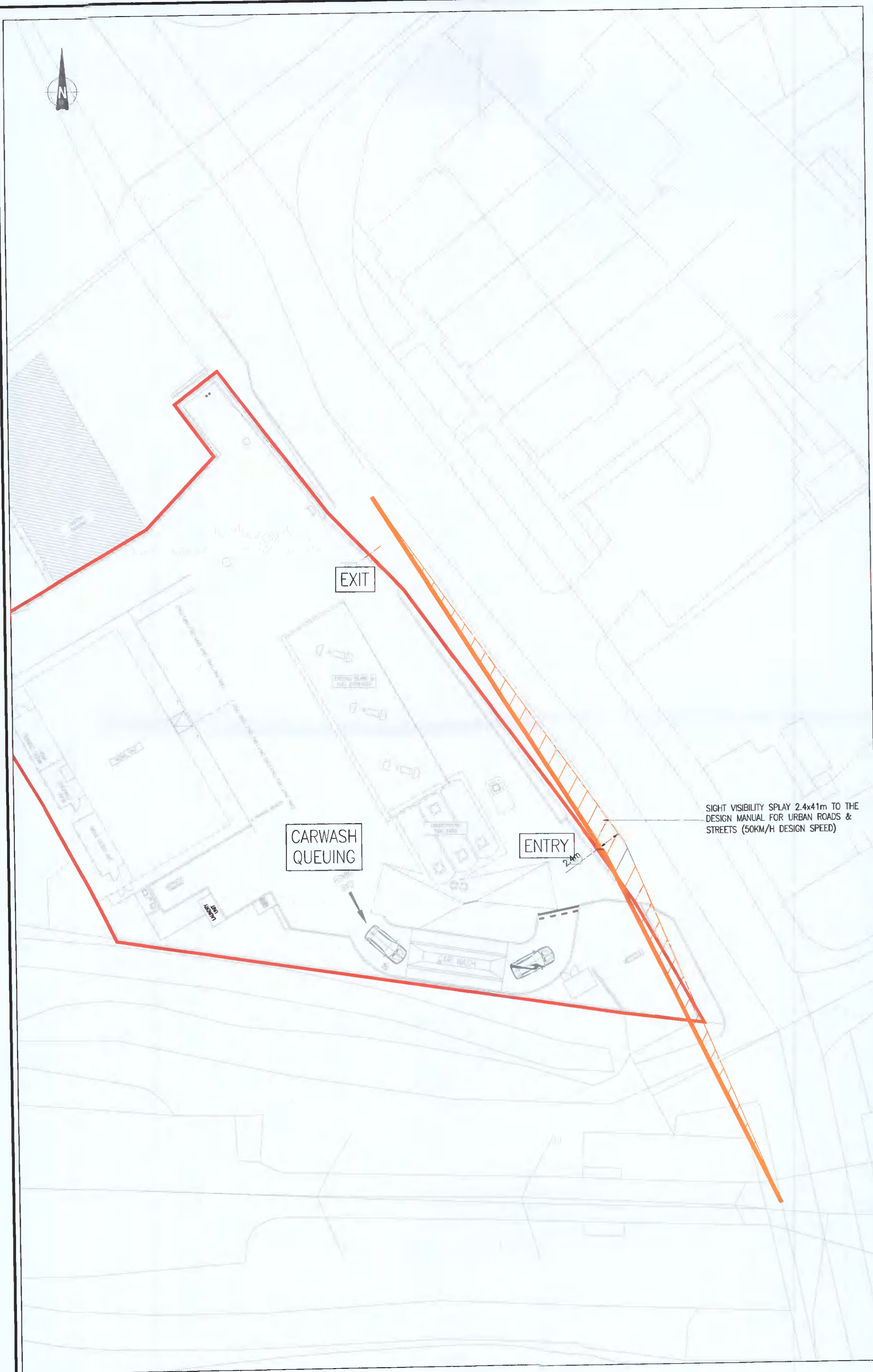


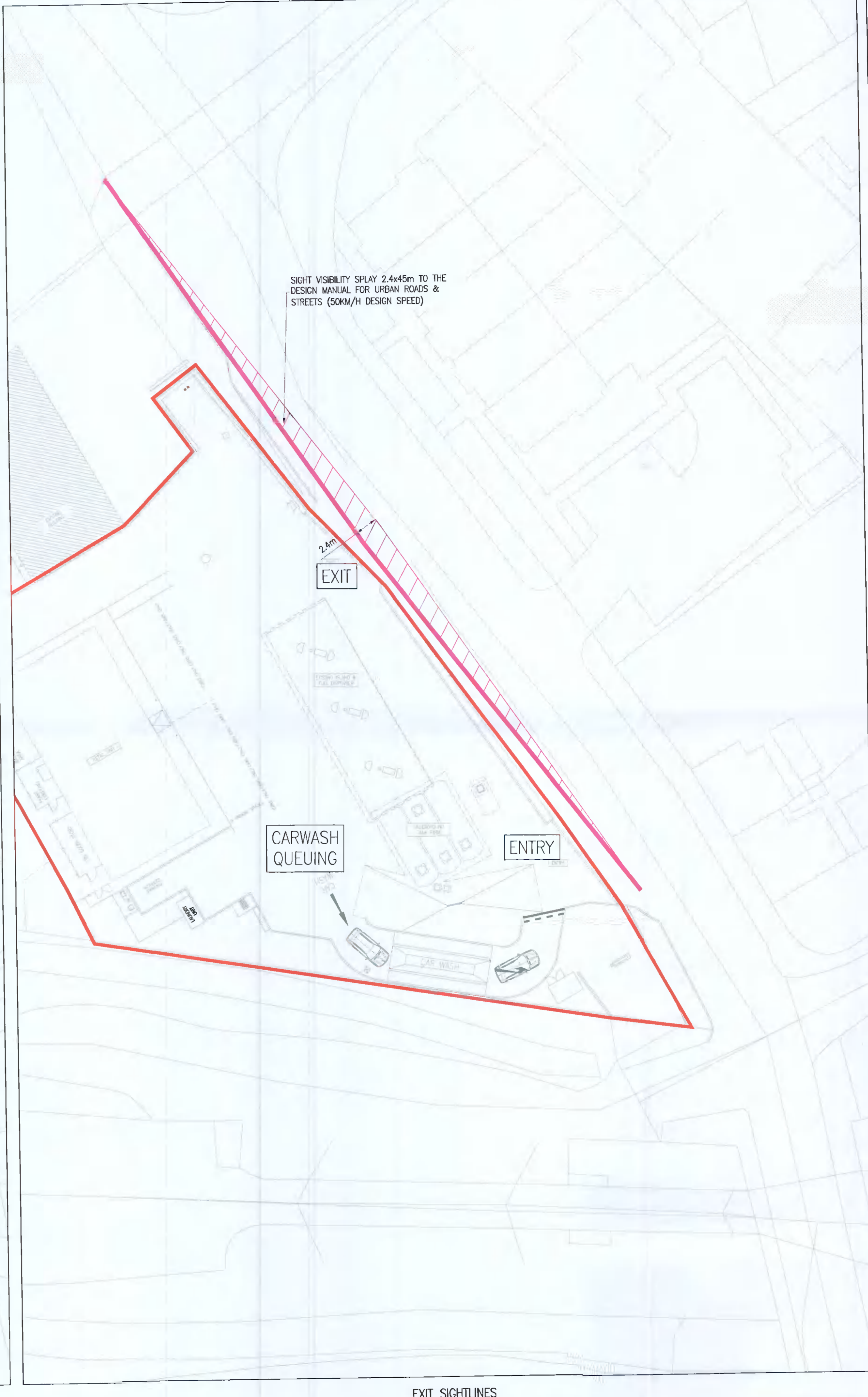


NOTES:
 THIS DRAWING IN WHOLE OR IN PART SHALL NOT BE COPIED WITHOUT THE
 PRIOR PERMISSION OF McArdle DOYLE LTD.
 ALL WORKS TO COMPLY WITH THE CURRENT BUILDING REGULATIONS.
 DO NOT SCALE.
 ORDONANCE SURVEY IRELAND LICENCE No. AR 0105722
 © ORDONANCE SURVEY IRELAND / GOVERNMENT OF IRELAND

LEGEND



ENTRANCE SIGHTLINES



EXIT SIGHTLINES

| Rev. | Description | By | Date |
|------|--------------------------------|-----|----------|
| A | ISSUED FOR FURTHER INFORMATION | GDR | 19.05.22 |
| - | ISSUED FOR PLANNING | GF | 01.12.21 |

McArdle Doyle
 Second Floor
 Exchange Building
 The Long Walk
 Durdalk, Co. Louth

Chartered Engineers
 Architectural Services
 & Project Managers

mail@mcardle Doyle.ie
 +353(0) 42 942 9052

PROJECT: PROPOSED CARWASH AT SERVICE STATION NINTH LOCK



DRAWING TITLE:
 PROPOSED SIGHTLINES

| Date | Drawn | Checked | Approved |
|-------------|----------------|---------|----------|
| 01/12/21 | GF | JF | JF |
| Scale at A1 | Drawing Number | Status | Rev. |
| 1:250 | P2177.NIN.C08 | PL | A |