

Penelope Ingle

Block S
 Eastpoint Business Park
 Alfie Bryne Road, Dublin 3
 Co. Dublin
 D03H3F4

Uisce Éireann
 Bosca OP 448
 Oifig Sheachadta na
 Cathrach Theas
 Cathair Chorcaí

Irish Water
 PO Box 448,
 South City
 Delivery Office,
 Cork City

www.water.ie

25 November 2021

Re: CDS21006565 pre-connection enquiry - Subject to contract | Contract denied

Connection for Multi/Mixed Use Development of 865 unit(s) at Boulevard Tile, Adamstown, Dublin

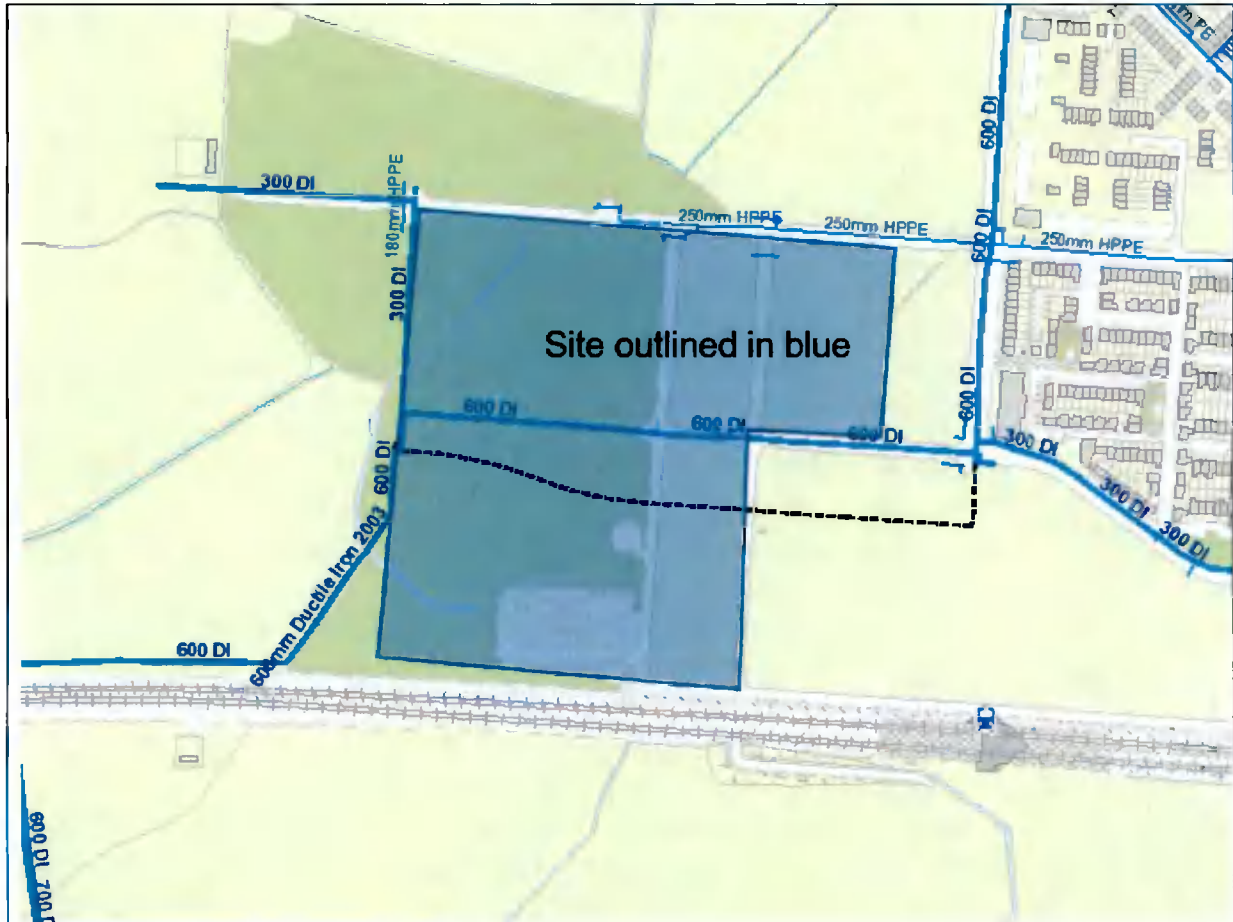
Dear Sir/Madam,

Irish Water has reviewed your pre-connection enquiry in relation to a Water & Wastewater connection at Boulevard Tile, Adamstown, Dublin (the **Premises**). Based upon the details you have provided with your pre-connection enquiry and on our desk top analysis of the capacity currently available in the Irish Water network(s) as assessed by Irish Water, we wish to advise you that your proposed connection to the Irish Water network(s) can be facilitated at this moment in time.

SERVICE	OUTCOME OF PRE-CONNECTION ENQUIRY <u>THIS IS NOT A CONNECTION OFFER. YOU MUST APPLY FOR A CONNECTION(S) TO THE IRISH WATER NETWORK(S) IF YOU WISH TO PROCEED.</u>
Water Connection	Feasible without infrastructure upgrade by Irish Water
Wastewater Connection	Feasible without infrastructure upgrade by Irish Water
SITE SPECIFIC COMMENTS	
Water Connection	The connection is feasible, connection shall be an approx. 20m of new 200mm ID main connecting to the existing 600mm ID main, DMA meter to be added at connection stage.
Wastewater Connection	The connection is feasible, there is sufficient capacity in the 600mm sewer, the internal 225mm may require upsizing, this will be discussed at connection stage.

The design and construction of the Water & Wastewater pipes and related infrastructure to be installed in this development shall comply with the Irish Water Connections and Developer Services Standard Details and Codes of Practice that are available on the Irish Water website. Irish Water reserves the right to supplement these requirements with Codes of Practice and these will be issued with the connection agreement.

The map included below outlines the current Irish Water infrastructure adjacent to your site:





Reproduced from the Ordnance Survey of Ireland by Permission of the Government. License No. 3-3-34

Whilst every care has been taken in its compilation Irish Water gives this information as to the position of its underground network as a general guide only on the strict understanding that it is based on the best available information provided by each Local Authority in Ireland to Irish Water. Irish Water can assume no responsibility for and give no guarantees, undertakings or warranties concerning the accuracy, completeness or up to date nature of the information provided and does not accept any liability whatsoever arising from any errors or omissions. This information should not be relied upon in the event of excavations or any other works being carried out in the vicinity of the Irish Water underground network. The onus is on the parties carrying out excavations or any other works to ensure the exact location of the Irish Water underground network is identified prior to excavations or any other works being carried out. Service connection pipes are not generally shown but their presence should be anticipated.

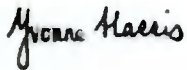
General Notes:

- 1) The initial assessment referred to above is carried out taking into account water demand and wastewater discharge volumes and infrastructure details on the date of the assessment. **The availability of capacity may change at any date after this assessment.**
- 2) This feedback does not constitute a contract in whole or in part to provide a connection to any Irish Water infrastructure. All feasibility assessments are subject to the constraints of the Irish Water Capital Investment Plan.
- 3) The feedback provided is subject to a Connection Agreement/contract being signed at a later date.
- 4) A Connection Agreement will be required to commencing the connection works associated with the enquiry this can be applied for at <https://www.water.ie/connections/get-connected/>
- 5) A Connection Agreement cannot be issued until all statutory approvals are successfully in place.
- 6) Irish Water Connection Policy/ Charges can be found at <https://www.water.ie/connections/information/connection-charges/>
- 7) Please note the Confirmation of Feasibility does not extend to your fire flow requirements.

- 8) Irish Water is not responsible for the management or disposal of storm water or ground waters. You are advised to contact the relevant Local Authority to discuss the management or disposal of proposed storm water or ground water discharges
- 9) To access Irish Water Maps email datarequests@water.ie
- 10) All works to the Irish Water infrastructure, including works in the Public Space, shall have to be carried out by Irish Water.

If you have any further questions, please contact Paul Lowry from the design team on 018230377 or email paulowr@water.ie For further information, visit www.water.ie/connections.

Yours sincerely,



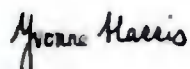
Yvonne Harris

Head of Customer Operations

- 8) Irish Water is not responsible for the management or disposal of storm water or ground waters. You are advised to contact the relevant Local Authority to discuss the management or disposal of proposed storm water or ground water discharges
- 9) To access Irish Water Maps email datarequests@water.ie
- 10) All works to the Irish Water infrastructure, including works in the Public Space, shall have to be carried out by Irish Water.

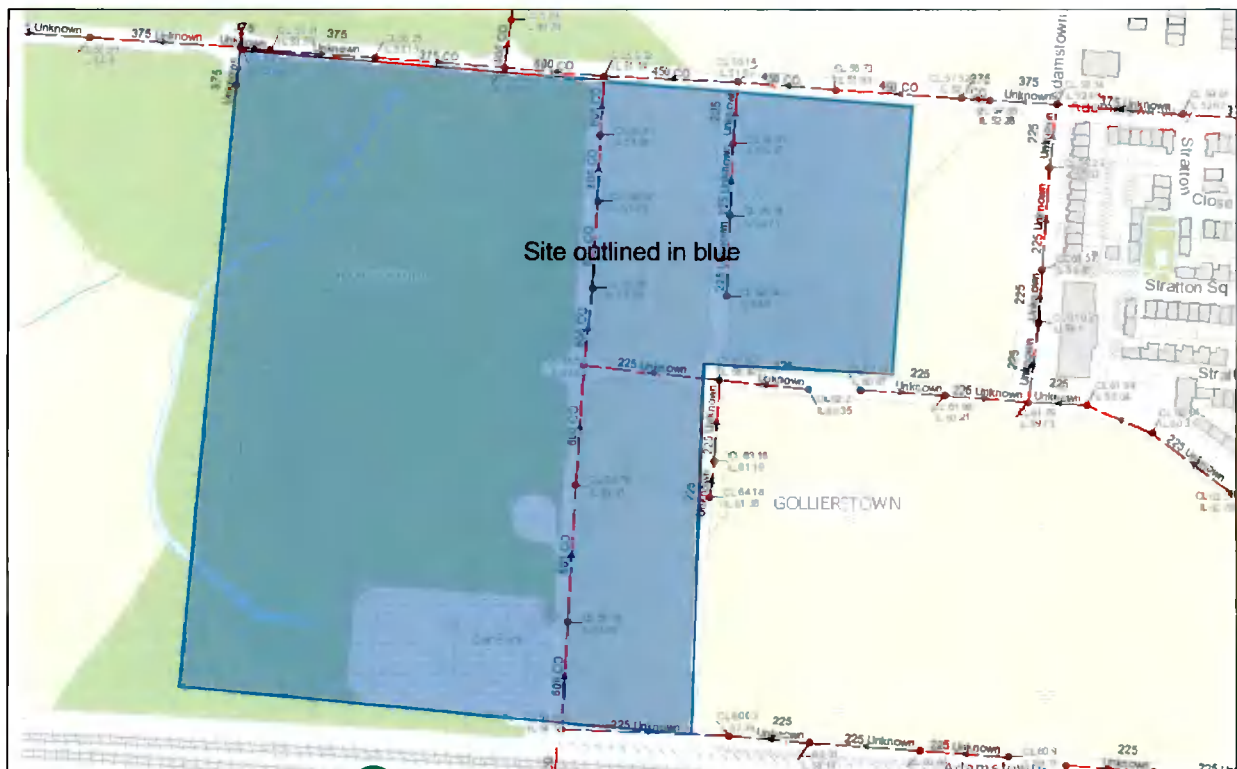
If you have any further questions, please contact Paul Lowry from the design team on 018230377 or email paulowr@water.ie For further information, visit www.water.ie/connections.

Yours sincerely,



Yvonne Harris

Head of Customer Operations



Reproduced from the Ordnance Survey of Ireland by Permission of the Government. License No. 3-3-34

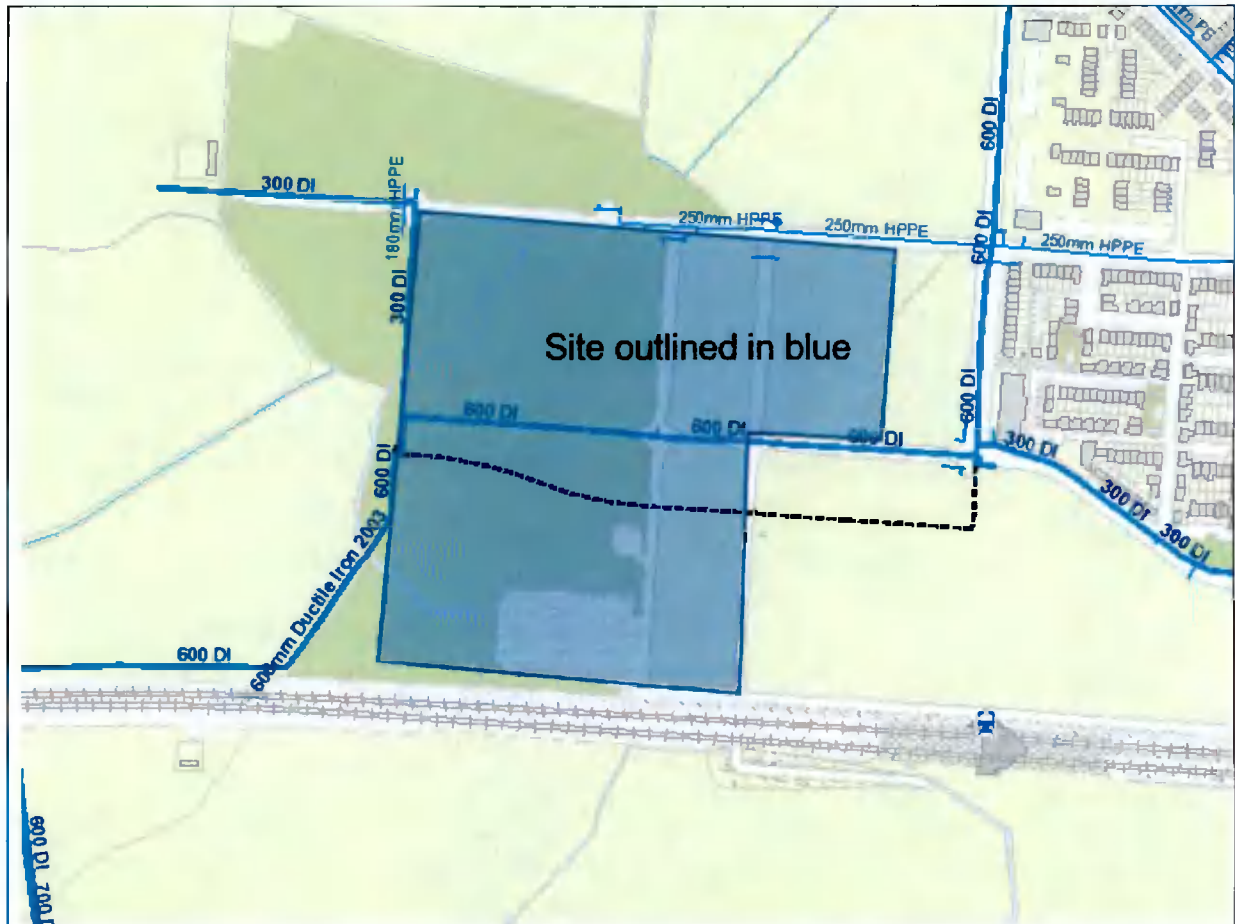
Whilst every care has been taken in its compilation Irish Water gives this information as to the position of its underground network as a general guide only on the strict understanding that it is based on the best available information provided by each Local Authority in Ireland to Irish Water. Irish Water can assume no responsibility for and give no guarantees, undertakings or warranties concerning the accuracy, completeness or up to date nature of the information provided and does not accept any liability whatsoever arising from any errors or omissions. This information should not be relied upon in the event of excavations or any other works being carried out in the vicinity of the Irish Water underground network. The onus is on the parties carrying out excavations or any other works to ensure the exact location of the Irish Water underground network is identified prior to excavations or any other works being carried out. Service connection pipes are not generally shown but their presence should be anticipated.

General Notes:

- 1) The initial assessment referred to above is carried out taking into account water demand and wastewater discharge volumes and infrastructure details on the date of the assessment. **The availability of capacity may change at any date after this assessment.**
- 2) This feedback does not constitute a contract in whole or in part to provide a connection to any Irish Water infrastructure. All feasibility assessments are subject to the constraints of the Irish Water Capital Investment Plan.
- 3) The feedback provided is subject to a Connection Agreement/contract being signed at a later date.
- 4) A Connection Agreement will be required to commencing the connection works associated with the enquiry this can be applied for at <https://www.water.ie/connections/get-connected/>
- 5) A Connection Agreement cannot be issued until all statutory approvals are successfully in place.
- 6) Irish Water Connection Policy/ Charges can be found at <https://www.water.ie/connections/information/connection-charges/>
- 7) Please note the Confirmation of Feasibility does not extend to your fire flow requirements.

The design and construction of the Water & Wastewater pipes and related infrastructure to be installed in this development shall comply with the Irish Water Connections and Developer Services Standard Details and Codes of Practice that are available on the Irish Water website. Irish Water reserves the right to supplement these requirements with Codes of Practice and these will be issued with the connection agreement.

The map included below outlines the current Irish Water infrastructure adjacent to your site:



Penelope Ingle
 Block S
 Eastpoint Business Park
 Alfie Bryne Road, Dublin 3
 Co. Dublin
 D03H3F4

Uisce Éireann
 Bosca OP 448
 Oifig Sheachadta na
 Cathrach Theas
 Cathair Chorcaí

Irish Water
 PO Box 448
 South City
 Delivery Office
 Cork City

www.water.ie

25 November 2021

Re: CDS21006565 pre-connection enquiry - Subject to contract | Contract denied

Connection for Multi/Mixed Use Development of 865 unit(s) at Boulevard Tile, Adamstown, Dublin

Dear Sir/Madam,

Irish Water has reviewed your pre-connection enquiry in relation to a Water & Wastewater connection at Boulevard Tile, Adamstown, Dublin (the **Premises**). Based upon the details you have provided with your pre-connection enquiry and on our desk top analysis of the capacity currently available in the Irish Water network(s) as assessed by Irish Water, we wish to advise you that your proposed connection to the Irish Water network(s) can be facilitated at this moment in time.

SERVICE	OUTCOME OF PRE-CONNECTION ENQUIRY <u>THIS IS NOT A CONNECTION OFFER. YOU MUST APPLY FOR A CONNECTION(S) TO THE IRISH WATER NETWORK(S) IF YOU WISH TO PROCEED.</u>
Water Connection	Feasible without infrastructure upgrade by Irish Water
Wastewater Connection	Feasible without infrastructure upgrade by Irish Water
SITE SPECIFIC COMMENTS	
Water Connection	The connection is feasible, connection shall be an approx. 20m of new 200mm ID main connecting to the existing 600mm ID main, DMA meter to be added at connection stage.
Wastewater Connection	The connection is feasible, there is sufficient capacity in the 600mm sewer, the internal 225mm may require upsizing, this will be discussed at connection stage.