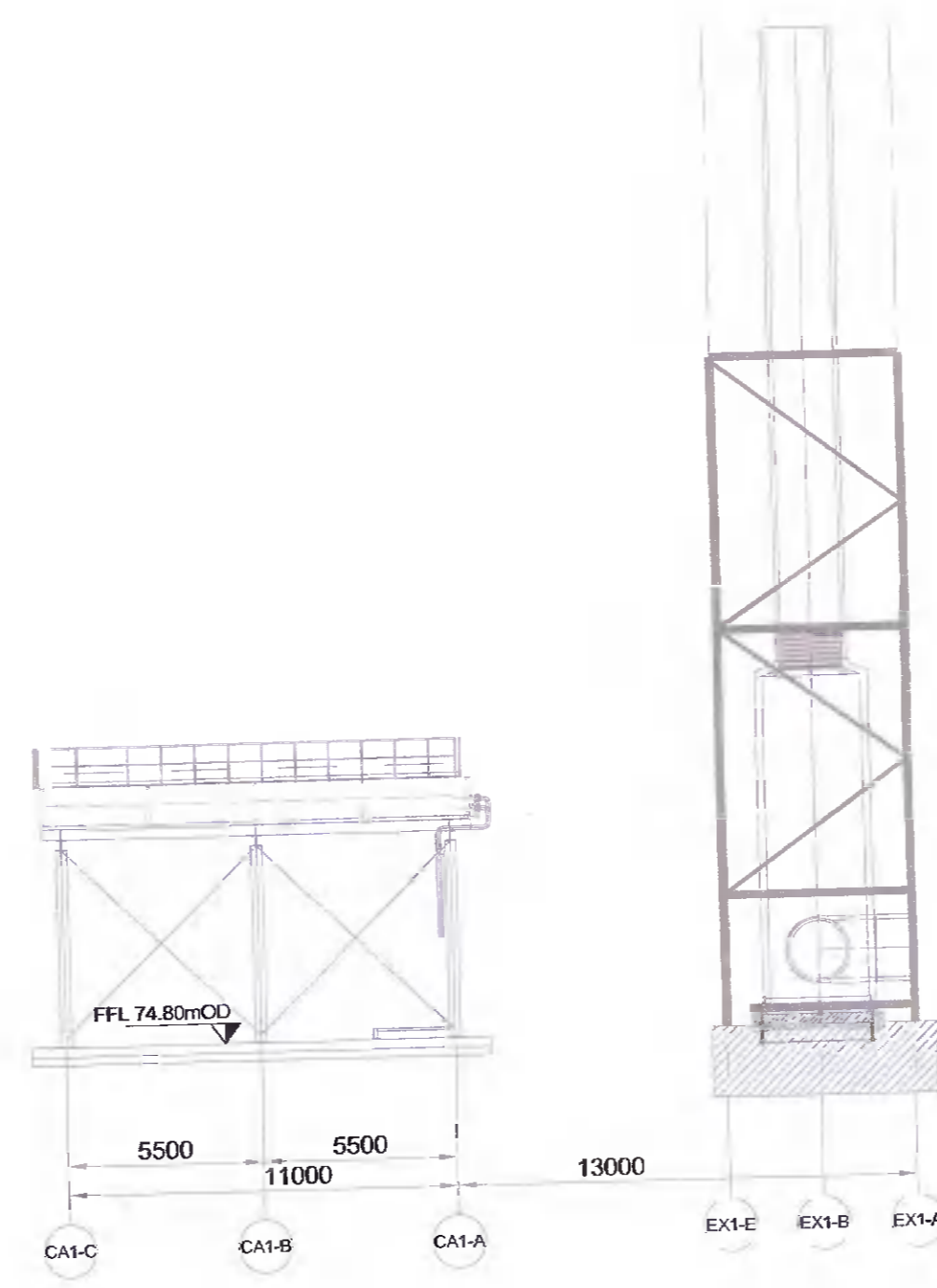
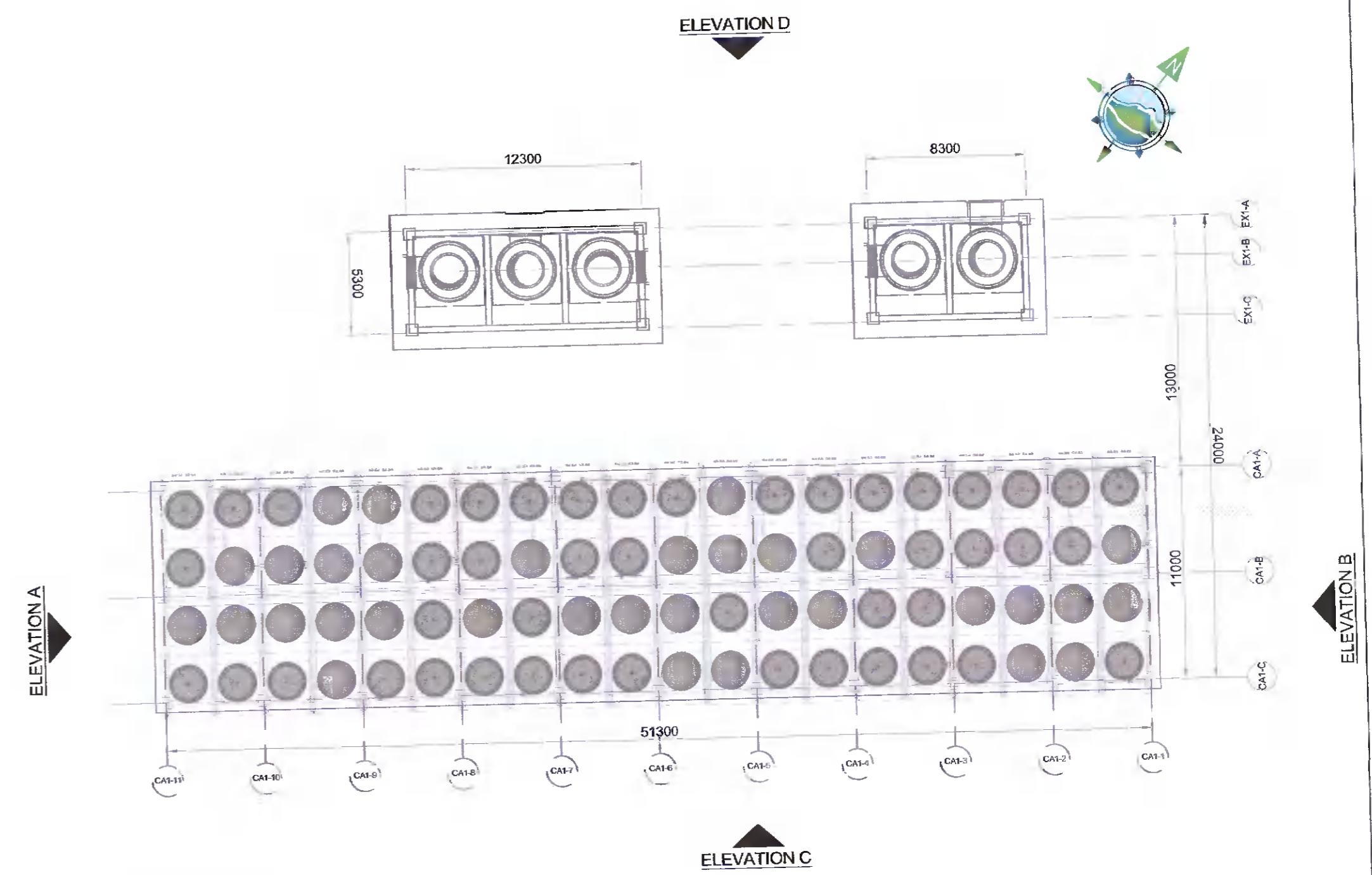


**EAST FACING ELEVATION A**  
Scale 1:200

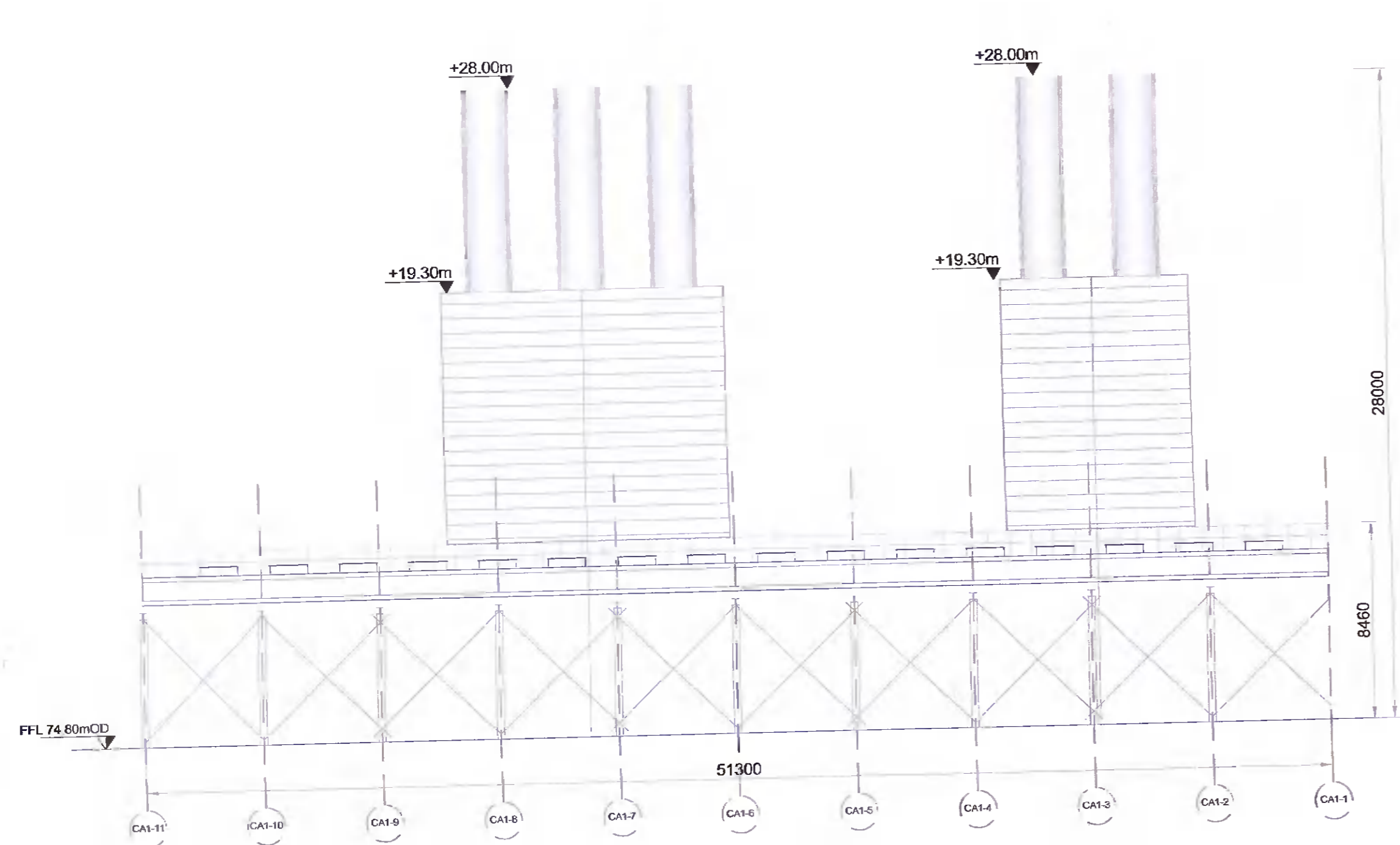
**WEST FACING ELEVATION B**  
Scale 1:200



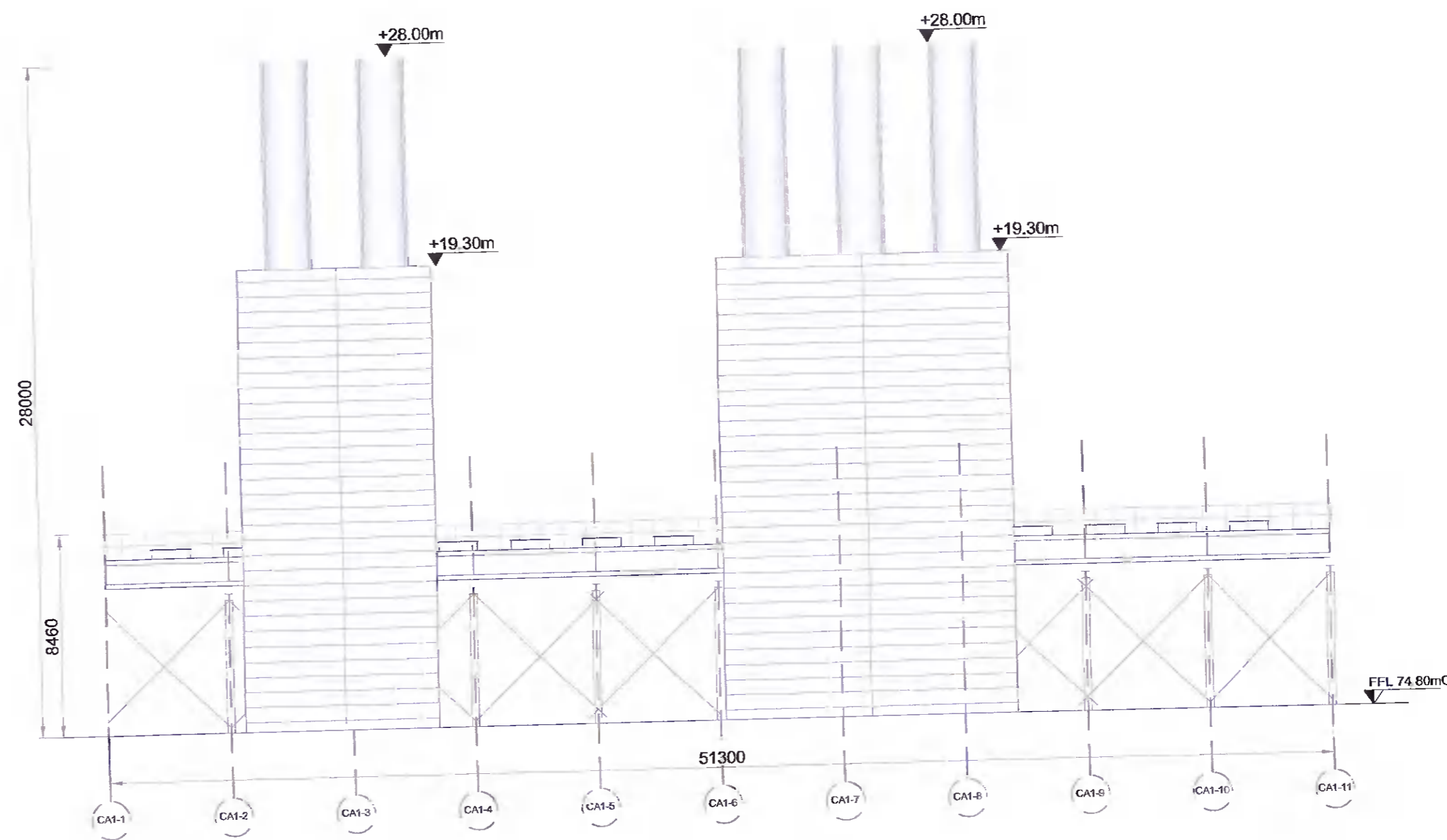
**SECTION 1-1**  
Scale 1:200



**PLAN**  
Scale 1:250



**SOUTH FACING ELEVATION C**  
Scale 1:200



**NORTH FACING ELEVATION D**  
Scale 1:200

As agreed with South Dublin County Council in the pre-application consultation meeting the final finishes, including cladding materials and colour codes, will be agreed with the Council post planning through planning condition. Greener Ideas Limited will ensure only Council approved finishes are applied on site.

Rev	Date	Description	By	Chkd.
B	23.05.22	CFI ISSUE	MN	LB
A	02.03.22	PLANNING ISSUE	MN	MMcC



Project:  
**PROFILE PARK  
POWER PLANT**

Title:  
**RADIATOR COOLERS &  
EXHAUST STACK  
PLAN, ELEVATIONS &  
SECTION**

Scale @ A1: **As Shown**  
Prepared by: **M. Nolan** Checked: **M. McCarthy** Date: **March 2022**  
Project Director: **S. Tinnelly**  
Drawing Status: **Planning**

**TOBIN**  
CONSULTING ENGINEERS

Block 10-4, Blanchardstown Corporate Park,  
Dublin 15, Ireland.  
tel: +353 (0)1-8030406  
fax: +353 (0)1-8030409  
e-mail: dublin@tobin.ie  
www.tobin.ie

Drawing No.: **11069-2043** Revision: **B**