

LANDSCAPING PLAN

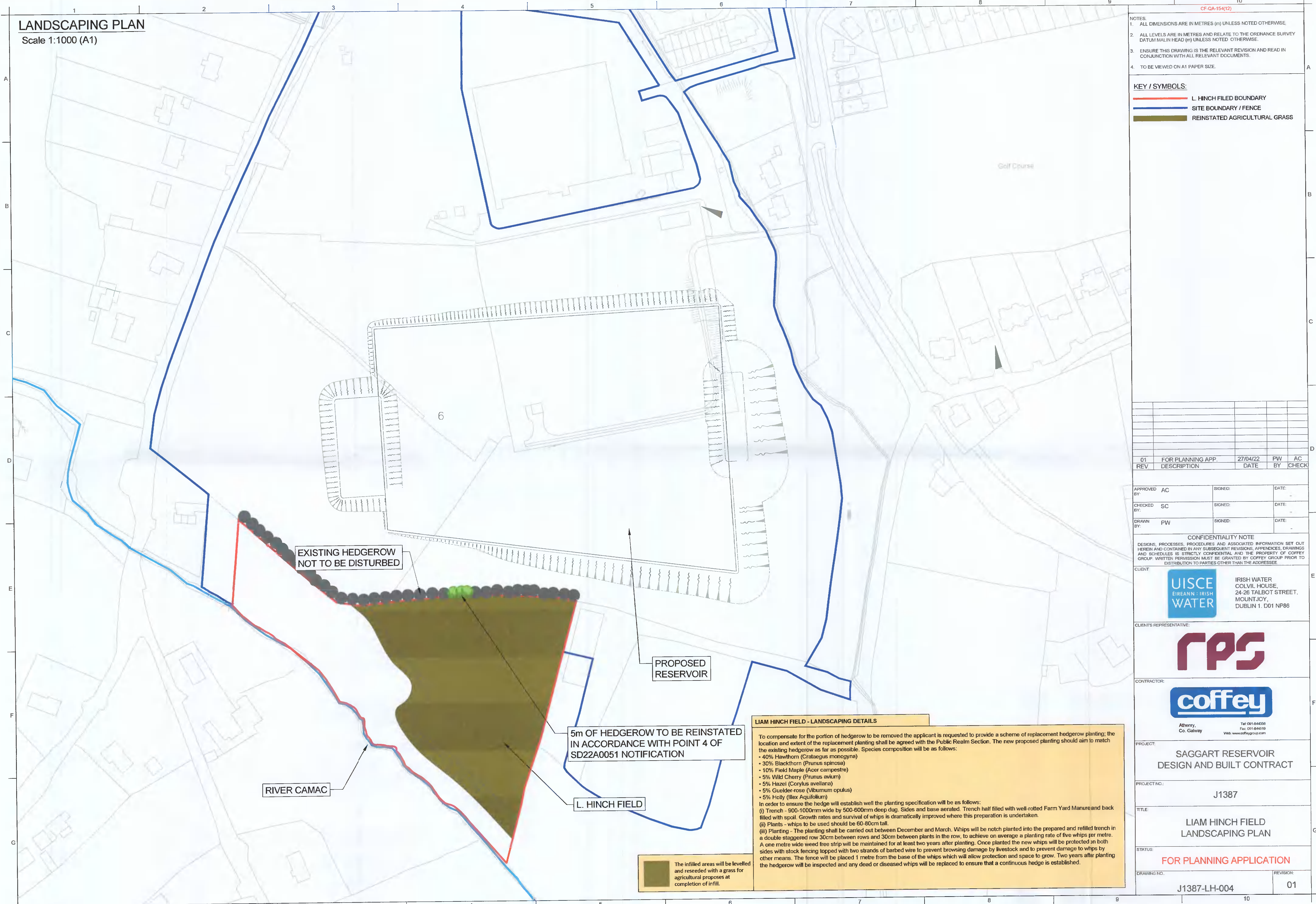
Scale 1:1000 (A1)

CF-QA-154(12)

- NOTES:
1. ALL DIMENSIONS ARE IN METRES (m) UNLESS NOTED OTHERWISE.
 2. ALL LEVELS ARE IN METRES AND RELATE TO THE ORDINANCE SURVEY DATUM MALIN HEAD (m) UNLESS NOTED OTHERWISE.
 3. ENSURE THIS DRAWING IS THE RELEVANT REVISION AND READ IN CONJUNCTION WITH ALL RELEVANT DOCUMENTS.
 4. TO BE VIEWED ON A1 PAPER SIZE.

KEY / SYMBOLS:

- L. HINCH FIELD BOUNDARY
- SITE BOUNDARY / FENCE
- REINSTATED AGRICULTURAL GRASS



REV	DESCRIPTION	DATE	BY	AC	CHECK
01	FOR PLANNING APP.	27/04/22	PW	AC	

APPROVED BY:	AC	SIGNED:	DATE:
CHECKED BY:	SC	SIGNED:	DATE:
DRAWN BY:	PW	SIGNED:	DATE:


CONFIDENTIALITY NOTE
 DESIGNS, PROCEDURES, PROCEDURES AND ASSOCIATED INFORMATION SET OUT HEREIN AND CONTAINED IN ANY SUBSEQUENT REVISIONS, APPENDICES, DRAWINGS AND SCHEDULES IS STRICTLY CONFIDENTIAL AND THE PROPERTY OF COFFEY GROUP. WRITTEN PERMISSION MUST BE GRANTED BY COFFEY GROUP PRIOR TO DISTRIBUTION TO PARTIES OTHER THAN THE ADDRESSEE.

CLIENT:



IRISH WATER
 COLVIL HOUSE,
 24-26 TALBOT STREET,
 MOUNTJOY,
 DUBLIN 1, D01 NP86

CLIENT'S REPRESENTATIVE:



CONTRACTOR:



Albany,
 Co. Galway
 Tel: 091-844356
 Fax: 091-844319
 Web: www.coffeygroup.com

PROJECT: SAGGART RESERVOIR DESIGN AND BUILT CONTRACT

PROJECT NO.: J1387

TITLE: LIAM HINCH FIELD LANDSCAPING PLAN

STATUS: FOR PLANNING APPLICATION

DRAWING NO.: J1387-LH-004 REVISION: 01

LIAM HINCH FIELD - LANDSCAPING DETAILS

To compensate for the portion of hedgerow to be removed the applicant is requested to provide a scheme of replacement hedgerow planting, the location and extent of the replacement planting shall be agreed with the Public Realm Section. The new proposed planting should aim to match the existing hedgerow as far as possible. Species composition will be as follows:

- 40% Hawthorn (*Crataegus monogyna*)
- 30% Blackthorn (*Prunus spinosa*)
- 10% Field Maple (*Acer campestre*)
- 5% Wild Cherry (*Prunus avium*)
- 5% Hazel (*Corylus avellana*)
- 5% Guelder-rose (*Viburnum opulus*)
- 5% Holly (*Ilex Aquifolium*)

In order to ensure the hedge will establish well the planting specification will be as follows:

(i) Trench - 900-1000mm wide by 500-600mm deep dug. Sides and base aerated. Trench half filled with well-rotted Farm Yard Manure and back filled with spoil. Growth rates and survival of whips is dramatically improved where this preparation is undertaken.

(ii) Plants - whips to be used should be 60-80cm tall.

(iii) Planting - The planting shall be carried out between December and March. Whips will be notch planted into the prepared and refilled trench in a double staggered row 30cm between rows and 30cm between plants in the row, to achieve an average a planting rate of five whips per metre. A one metre wide weed free strip will be maintained for at least two years after planting. Once planted the new whips will be protected on both sides with stock fencing topped with two strands of barbed wire to prevent browsing damage by livestock and to prevent damage to whips by other means. The fence will be placed 1 metre from the base of the whips which will allow protection and space to grow. Two years after planting the hedgerow will be inspected and any dead or diseased whips will be replaced to ensure that a continuous hedge is established.

The infilled areas will be levelled and reseeded with a grass for agricultural purposes at completion of infill.