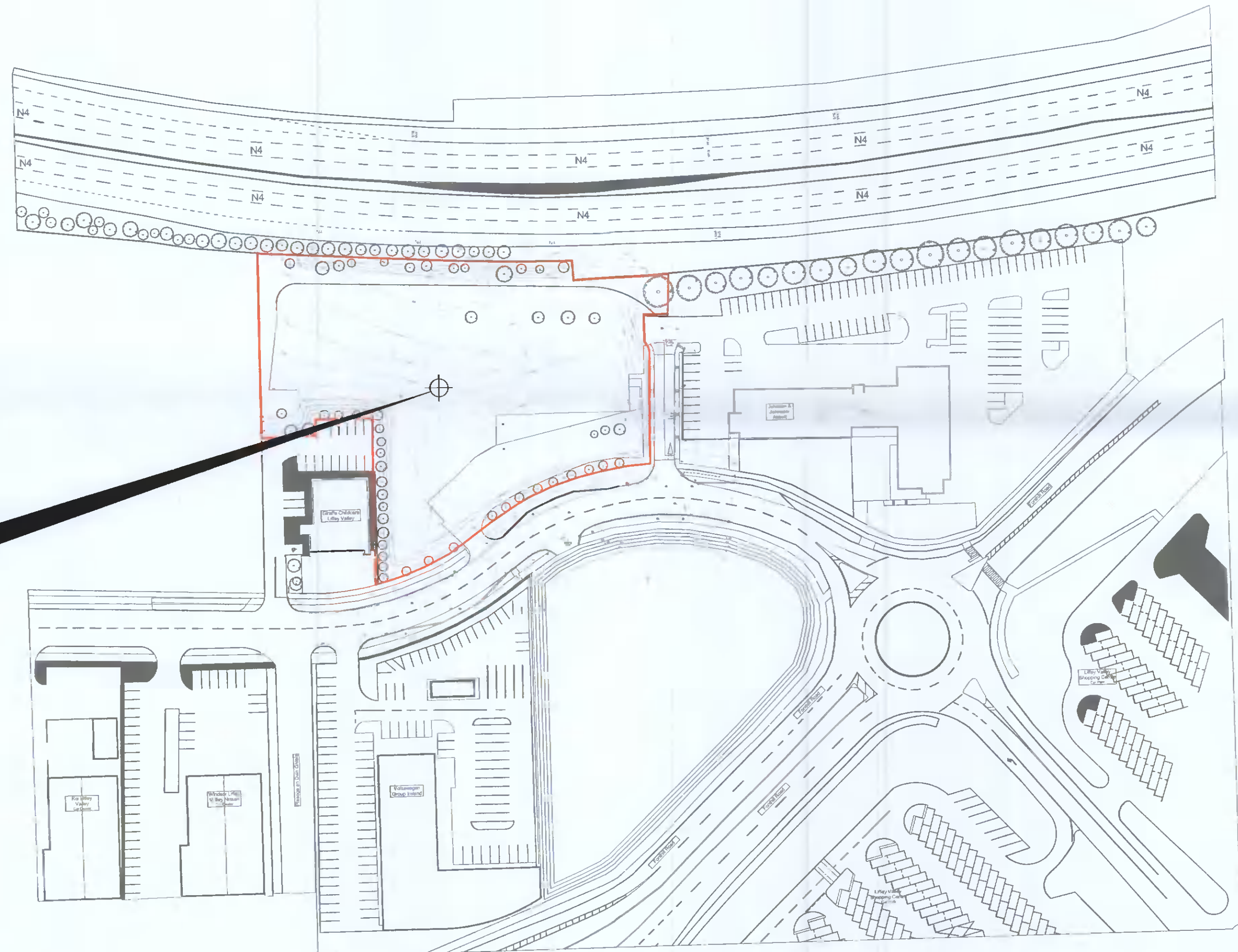


- NOTES**
1. ALL DRAWINGS TO BE CHECKED BY CONTRACTOR ON SITE AND ENGINEER INFORMED OF DISCREPANCIES BEFORE WORK COMMENCES
 2. ALL LEVELS ARE IN METRES AND ARE RELATED TO ORDNANCE DATUM
 3. ALL DIMENSIONS TO BE IN MILLIMETERS UNLESS NOTED OTHERWISE
 4. CONTRACTOR SHALL SATISFY HIMSELF AS TO THE ACCURACY OF PAVEMENT LEVELS ON SITE PRIOR TO COMMENCEMENT OF WORKS ON SITE
 5. ALL SURFACE WATER DRAINAGE WORKS TO BE IN ACCORDANCE WITH THE REQUIREMENTS OF THE LOCAL AUTHORITY'S CODE OF PRACTICE FOR DRAINAGE AND THE CUSDS
 6. ALL SURFACE WATER SEWERS TO BE CLASS H CONCRETE TO EN1916 & IS 6:2004.
 7. ALL FOUL DRAINAGE WORKS TO BE IN ACCORDANCE WITH IRISH WATER'S CODE OF PRACTICE FOR WASTEWATER SUPPLY AND WASTEWATER INFRASTRUCTURE STANDARD DETAILS.
 8. FOUL SEWERS TO BE THERMOPLASTIC STRUCTURED WALL PIPES (COMPLYING WITH THE PROVISION OF IS EN 13476 AND WIS 4-35-01 2000) AND COMPLY WITH THE REQUIREMENTS OF THE IRISH WATER CODE OF PRACTICE
 9. WATERMAIN INSTALLATION AND ALL WATER SUPPLY WORKS TO BE IN ACCORDANCE WITH THE REQUIREMENTS OF IRISH WATER'S CODE OF PRACTICE FOR WATER SUPPLY AND WATER INFRASTRUCTURE STANDARD DETAILS
 10. WATERMANS TO BE TYPE HDPE, PE-100, SDR-17 RATED AND SHALL CONFORM TO IS EN 12201 (PART 1, PART 2 & PART 3).
 11. WATERMAIN SERVICE CONNECTION PIPES TO BE HDPE (PE-80) MATERIAL WITH SDR-17 RATING
 12. ANCHOR BLOCKS TO BE POSITIONED AT DEAD ENDS, TEES, BENDS AND AT EACH SIDE OF HYDRANTS AND VALVES IN ACCORDANCE WITH THE REQUIREMENTS OF IRISH WATER STANDARD DETAIL STD-W-28 (WATER MAIN THRUST AND SUPPORT BLOCKS)
 13. HYDRANT OUTLET TO BE 200mm BELOW GROUND LEVEL UNLESS REQUESTED OTHERWISE
 14. WHERE COVER TO PIPE IS LESS THAN 900mm IN GREEN AREAS AND 1200mm IN TRAFFICKED AREAS, ENCASE PIPE IN NEW 150mm CONCRETE WITH MOVEMENT JOINTS.

LEGEND

— SITE BOUNDARY

X = 706770.756
Y = 735083.200



0 10 20 30 40 50 m
SCALE 1:1000

NOT FOR CONSTRUCTION

Rev	Date	Description	By	CHK
P1	28/04/22	CFI RESPONSE	SM	SM
P	15/10/21	PLANNING SUBMISSION	SM	S.J.

PLANNING

gdcl
CONSULTING ENGINEERS

Scope House,
Perrystown,
Dublin D12 K8PP
www.gdalysconsulting.com

75 Shelton Street,
Covent Garden,
London WC2H 9JQ

PROJECT
U-Store-It, Liffey Valley

CLIENT
Oceanglade Ltd

DRAWING TITLE
Site Location Map

dm. by: PTC	date: Dec '19	scale: 1:1000
drawing size: A1	chk: SJ	app: GD
job no: P2005	drg. no: P2005-C-200	rev: P1