

**DATE:** 26 April 2022  
**DESIGNER:** Graham Sheehan  
**PROJECT No:** SES 02522 Rev B  
**PROJECT NAME:** Adamstown Boulevard Residential Development Quitain



Designed in accordance with ISEN 13201-2:2015 Class P2 on Celbridge Link Rd. P3 on Adamstown Way and Airlie Park Rd., P4 for residential roads.

Rev A: Latest site layout, redesigned to suit.  
Rev B: Latest site layout, redesigned to suit.

## Outdoor Lighting Report

**PREPARED BY:** Sabre Electrical Services Ltd.  
Unit 11 Bellevue Ind. Est.  
Finglas  
Dublin 11.  
Email: [graham@sabrelighting.ie](mailto:graham@sabrelighting.ie)  
Ph: 01 8110875

## Layout Report

### General Data

Dimensions in Metres Angles in Degrees

### Calculation Grids

ID	Grid Name	X	Y	X' Length	Y' Length	X' Spacing	Y' Spacing
1	Grid 1	701456.87	732909.03	291.00	186.40	1.50	1.49
2	Grid 2	701430.96	732912.00	27.00	354.00	1.50	1.50
3	Grid 3	701373.00	732889.00	308.00	33.00	1.50	1.50
4	Grid 4	701465.96	733094.50	308.00	24.00	1.50	1.50
5	Grid 5	701456.87	733118.00	226.00	158.00	1.50	1.50

### Luminaires



#### Luminaire A Data

Supplier	C U Phosco
Type	P852-12-P4-NW-CB0450-18W
Lamp(s)	740C NW
Lamp Flux (klm)	2.28
File Name	P852-12-P4-NW-CB0450-18W.ies
Maintenance Factor	0.83
Imax70,80,90(cd/klm)	760.6, 161.3, 0.8
No. in Project	13



#### Luminaire B Data

Supplier	C U Phosco
Type	P852-12-R3B-NW-CB0200-9W
Lamp(s)	740C NW
Lamp Flux (klm)	1.11
File Name	P852-12-R3B-NW-CB0200-9W.ies
Maintenance Factor	0.83
Imax70,80,90(cd/klm)	896.4, 62.1, 1.9
No. in Project	5



#### Luminaire C Data

Supplier	C U Phosco
Type	P852-12-F2-NW-CB0700-27W
Lamp(s)	740C NW
Lamp Flux (klm)	3.28
File Name	P852-12-F2-NW-CB0700-27W.ies
Maintenance Factor	0.83
Imax70,80,90(cd/klm)	761.9, 260.5, 34.9
No. in Project	50



#### Luminaire D Data

Supplier	C U Phosco
Type	P862-256-P3-740-W5-0250-64W
Lamp(s)	740SS
Lamp Flux (klm)	9.31
File Name	P862-256-P3-740-W5-0250-64W.ies
Maintenance Factor	0.83
Imax70,80,90(cd/klm)	341.2, 118.8, 0.6
No. in Project	39

### Layout

ID	Type	X	Y	Height	Angle	Tilt	Cant	Out-reach	Target X	Target Y	Target Z
1	D	701468.85	733248.91	10.00	178.00	0.00	0.00	0.50			
2	D	701453.16	733232.68	10.00	356.00	0.00	0.00	0.50			
3	D	701467.05	733213.33	10.00	178.00	0.00	0.00	0.50			
4	D	701451.86	733196.43	10.00	352.00	0.00	0.00	0.50			
5	D	701465.55	733178.17	10.00	178.00	0.00	0.00	0.50			
6	D	701450.79	733158.67	10.00	359.00	0.00	0.00	0.50			

**Layout Continued**

ID	Type	X	Y	Height	Angle	Tilt	Cant	Out-reach	Target X	Target Y	Target Z
7	D	701463.67	733141.12	10.00	178.00	0.00	0.00	0.50			
8	D	701449.34	733119.46	10.00	357.00	0.00	0.00	0.50			
9	D	701461.15	733089.75	10.00	178.00	0.00	0.00	0.50			
10	D	701446.87	733074.18	10.00	0.00	0.00	0.00	0.50			
11	D	701459.57	733054.17	10.00	178.00	0.00	0.00	0.50			
12	D	701444.92	733032.25	10.00	4.00	0.00	0.00	0.50			
13	D	701457.31	733014.05	10.00	178.00	0.00	0.00	0.50			
14	D	701442.83	732990.39	10.00	356.00	0.00	0.00	0.50			
15	D	701441.42	732962.45	10.00	352.00	0.00	0.00	0.50			
16	D	701453.48	732933.71	10.00	174.00	0.00	0.00	0.50			
17	D	701439.24	732914.85	10.00	354.00	0.00	0.00	0.50			
18	D	701440.73	733281.86	10.00	283.00	0.00	0.00	0.50			
19	D	701424.61	732908.32	10.00	266.00	0.00	0.00	0.50			
20	D	701389.87	732896.19	10.00	84.00	0.00	0.00	0.50			
21	D	701465.03	732906.40	10.00	268.00	0.00	0.00	0.50			
22	D	701506.97	732904.26	10.00	268.00	0.00	0.00	0.50			
23	D	701545.83	732902.46	10.00	268.00	0.00	0.00	0.50			
24	D	701575.91	732901.04	10.00	268.00	0.00	0.00	0.50			
25	D	701617.72	732899.11	10.00	268.00	0.00	0.00	0.50			
26	D	701646.85	732897.59	10.00	268.00	0.00	0.00	0.50			
27	D	701676.03	732896.41	10.00	268.00	0.00	0.00	0.50			
28	D	701474.70	733112.90	10.00	268.00	0.00	0.00	0.50			
29	D	701508.22	733097.94	10.00	88.00	0.00	0.00	0.50			
30	D	701546.41	733109.42	10.00	268.00	0.00	0.00	0.50			
31	D	701586.31	733094.12	10.00	94.00	0.00	0.00	0.50			
32	D	701620.71	733105.81	10.00	268.00	0.00	0.00	0.50			
33	D	701652.92	733090.84	10.00	84.00	0.00	0.00	0.50			
34	D	701691.04	733102.64	10.00	268.00	0.00	0.00	0.50			
35	D	701725.11	733087.79	10.00	86.00	0.00	0.00	0.50			
36	D	701753.94	733101.87	10.00	268.00	0.00	0.00	0.50			
37	C	701530.74	732914.91	6.00	358.00	0.00	0.00	0.40			
38	C	701532.25	732946.09	6.00	358.00	0.00	0.00	0.40			
39	C	701532.01	732959.02	6.00	91.00	0.00	0.00	0.40			
40	C	701500.96	732974.67	6.00	266.00	0.00	0.00	0.40			
41	C	701475.98	732975.98	6.00	266.00	0.00	0.00	0.40			
42	C	701561.18	732957.78	6.00	91.00	0.00	0.00	0.40			

**Layout Continued**

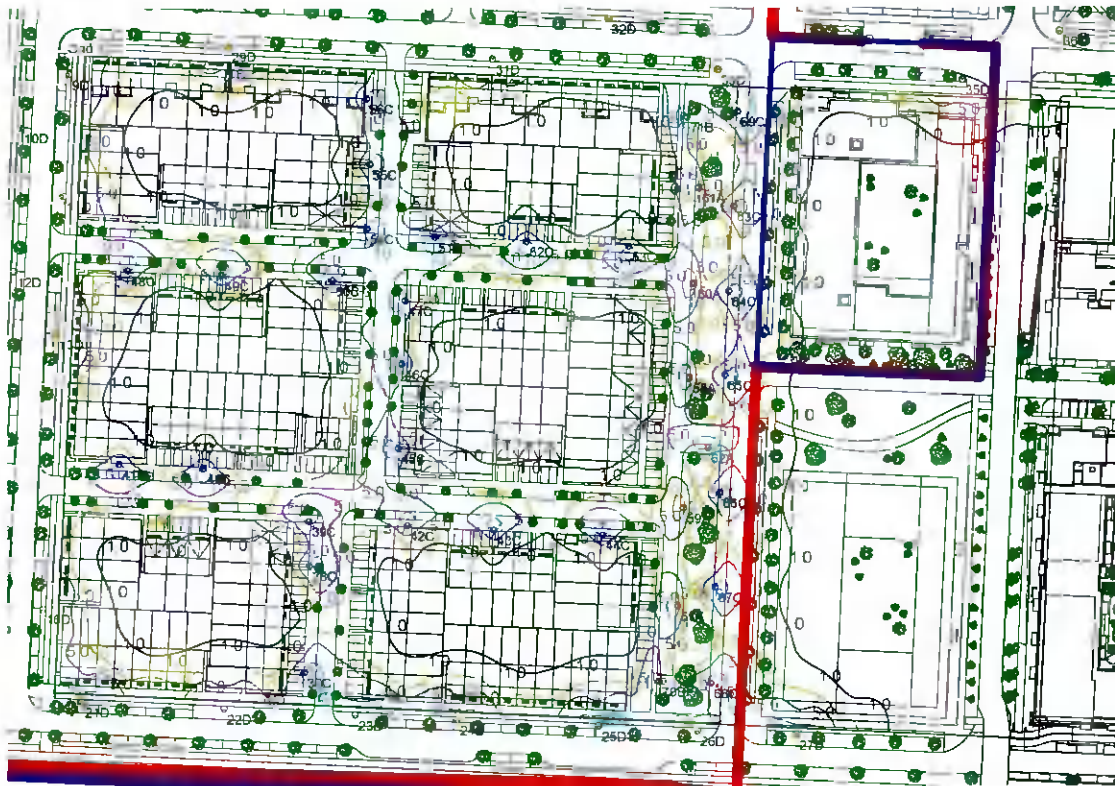
ID	Type	X	Y	Height	Angle	Tilt	Cont	Out-reach	Target X	Target Y	Target Z
43	C	701586.76	732956.42	6.00	89.00	0.00	0.00	0.40			
44	C	701618.89	732954.89	6.00	92.00	0.00	0.00	0.40			
45	C	701558.49	732980.41	6.00	179.00	0.00	0.00	0.40			
46	C	701559.62	733005.06	6.00	179.00	0.00	0.00	0.40			
47	C	701560.54	733023.59	6.00	179.00	0.00	0.00	0.40			
48	C	701478.49	733032.41	6.00	88.00	0.00	0.00	0.40			
49	C	701506.21	733030.97	6.00	83.00	0.00	0.00	0.40			
50	C	701539.04	733029.41	6.00	90.00	0.00	0.00	0.40			
51	C	701569.41	733042.04	6.00	262.00	0.00	0.00	0.40			
52	C	701596.43	733040.83	6.00	272.00	0.00	0.00	0.40			
53	C	701626.65	733039.32	6.00	268.00	0.00	0.00	0.40			
54	C	701549.24	733044.61	6.00	352.00	0.00	0.00	0.40			
55	C	701550.03	733063.32	6.00	0.00	0.00	0.00	0.40			
56	C	701549.00	733082.60	6.00	354.00	0.00	0.00	0.40			
57	A	701641.10	732934.10	6.00	178.00	0.00	0.00	0.40			
58	A	701644.59	733000.91	6.00	179.00	0.00	0.00	0.40			
59	A	701642.73	732962.85	6.00	177.00	0.00	0.00	0.40			
60	A	701645.99	733028.49	6.00	177.00	0.00	0.00	0.40			
61	A	701647.28	733056.43	6.00	183.00	0.00	0.00	0.40			
62	A	701649.91	732980.43	6.00	94.00	0.00	0.00	0.40			
63	C	701657.55	733050.94	6.00	354.00	0.00	0.00	0.40			
64	C	701656.19	733026.16	6.00	354.00	0.00	0.00	0.40			
65	C	701654.97	733001.63	6.00	354.00	0.00	0.00	0.40			
66	C	701653.39	732967.25	6.00	354.00	0.00	0.00	0.40			
67	C	701652.01	732939.60	6.00	354.00	0.00	0.00	0.40			
68	C	701650.69	732911.48	6.00	354.00	0.00	0.00	0.40			
69	C	701658.73	733078.62	6.00	354.00	0.00	0.00	0.40			
70	B	701635.46	732912.00	6.00	173.00	0.00	0.00	0.40			
71	B	701643.83	733076.99	6.00	185.00	0.00	0.00	0.40			
72	C	701660.67	733117.90	6.00	357.00	0.00	0.00	0.40			
73	C	701661.93	733145.33	6.00	0.00	0.00	0.00	0.40			
74	C	701663.32	733175.12	6.00	0.00	0.00	0.00	0.40			
75	C	701664.59	733200.65	6.00	0.00	0.00	0.00	0.40			
76	C	701665.80	733226.65	6.00	0.00	0.00	0.00	0.40			
77	C	701667.04	733251.83	6.00	0.00	0.00	0.00	0.40			
78	B	701648.21	733249.99	6.00	177.00	0.00	0.00	0.40			

**Layout Continued**

ID	Type	X	Y	Height	Angle	Tilt	Cant	Out-reach	Target X	Target Y	Target Z
79	A	701652.42	733209.74	6.00	175.00	0.00	0.00	0.40			
80	A	701651.12	733182.89	6.00	176.00	0.00	0.00	0.40			
81	A	701656.17	733163.24	6.00	86.00	0.00	0.00	0.40			
82	A	701649.29	733145.88	6.00	176.00	0.00	0.00	0.40			
83	B	701641.64	733119.53	6.00	176.00	0.00	0.00	0.40			
84	A	701632.08	733180.47	6.00	90.00	0.00	0.00	0.40			
85	A	701599.10	733181.99	6.00	91.00	0.00	0.00	0.40			
86	C	701570.80	733123.38	6.00	3.00	0.00	0.00	0.40			
87	C	701573.07	733151.66	6.00	359.00	0.00	0.00	0.40			
88	C	701586.56	733174.80	6.00	181.00	0.00	0.00	0.40			
89	C	701587.93	733203.06	6.00	173.00	0.00	0.00	0.40			
90	C	701589.18	733231.33	6.00	180.00	0.00	0.00	0.40			
91	C	701574.38	733257.10	6.00	2.00	0.00	0.00	0.40			
92	C	701562.09	733197.96	6.00	90.00	0.00	0.00	0.40			
93	C	701523.17	733213.98	6.00	268.00	0.00	0.00	0.40			
94	C	701503.27	733199.90	6.00	2.00	0.00	0.00	0.40			
95	C	701506.88	733172.46	6.00	355.00	0.00	0.00	0.40			
96	C	701503.76	733146.57	6.00	2.00	0.00	0.00	0.40			
97	C	701502.86	733124.74	6.00	2.00	0.00	0.00	0.40			
98	C	701494.52	733195.19	6.00	264.00	0.00	0.00	0.40			
99	C	701479.28	733196.11	6.00	267.00	0.00	0.00	0.40			
100	B	701487.90	733158.74	6.00	269.00	0.00	0.00	0.40			
101	C	701540.41	733250.96	6.00	179.00	0.00	0.00	0.40			
102	C	701521.71	733251.83	6.00	2.00	0.00	0.00	0.40			
103	C	701541.25	733213.08	6.00	265.00	0.00	0.00	0.40			
104	A	701653.55	733236.75	6.00	175.00	0.00	0.00	0.40			
105	D	701454.89	733264.63	10.00	356.00	0.00	0.00	0.50			
106	D	701381.53	732917.05	10.00	307.00	0.00	0.00	0.50			
107	D	701787.58	733084.32	10.00	84.00	0.00	0.00	0.50			

# Horizontal Illuminance (lux)

Grid 1

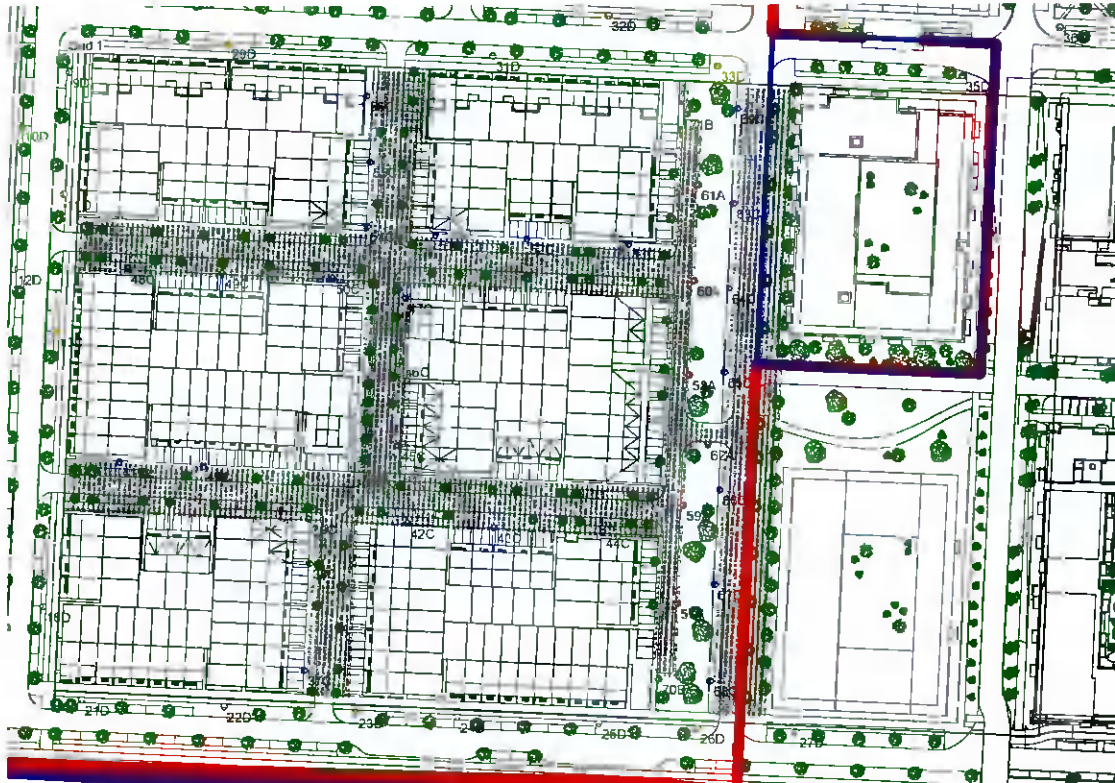


## Results

Eav	5.14
Emin	1.08
E <sub>max</sub>	15.26
E <sub>min</sub> /E <sub>max</sub>	0.07
E <sub>min</sub> /E <sub>av</sub>	0.21

# Horizontal Illuminance (lux)

Grid 1

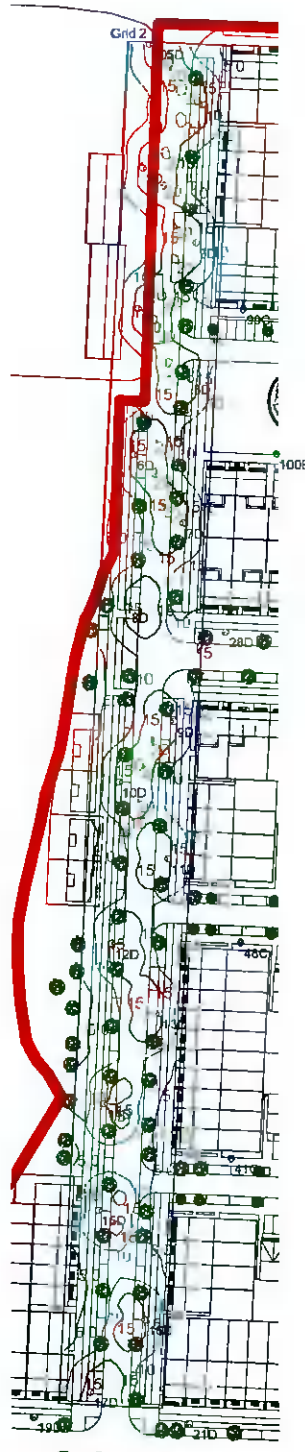


## Results

Eav	5.14
Emin	1.08
Emax	15.26
Emin/Emax	0.07
Emin/Eav	0.21

## Horizontal Illuminance (lux)

Grid 2



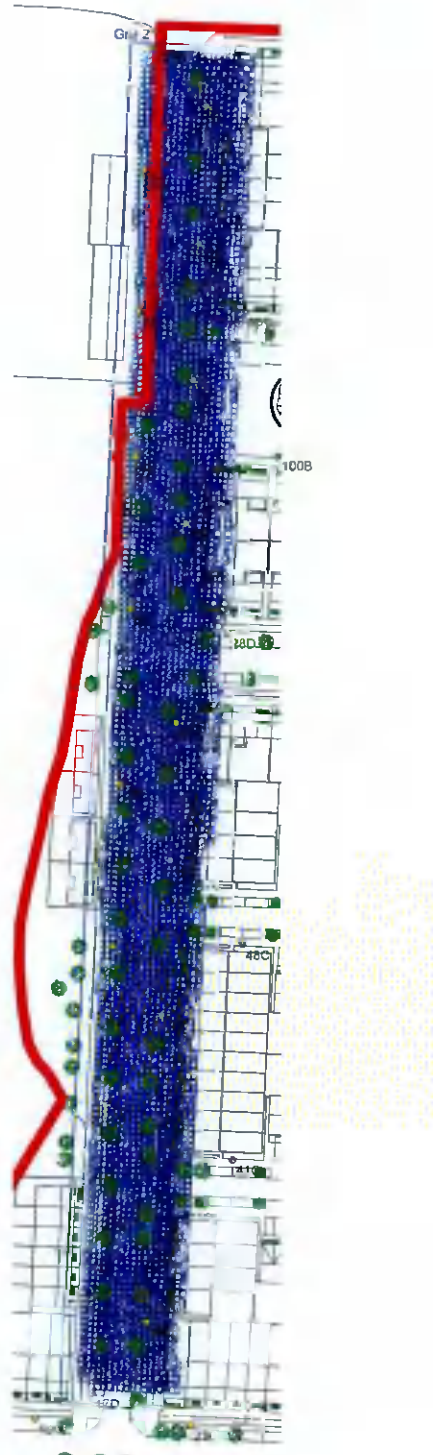
### Results

Eav	11.98
Emin	3.20
E <sub>max</sub>	21.52
E <sub>min</sub> /E <sub>max</sub>	0.15
E <sub>min</sub> /E <sub>av</sub>	0.27



## Horizontal Illuminance (lux)

Grid 2

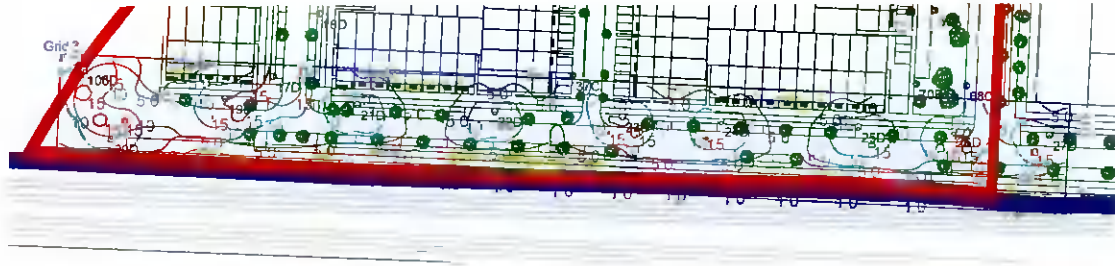


### Results

Eav	11.98
Emin	3.20
E <sub>max</sub>	21.52
E <sub>min</sub> /E <sub>max</sub>	0.15
E <sub>min</sub> /E <sub>av</sub>	0.27

## Horizontal Illuminance (lux)

Grid 3

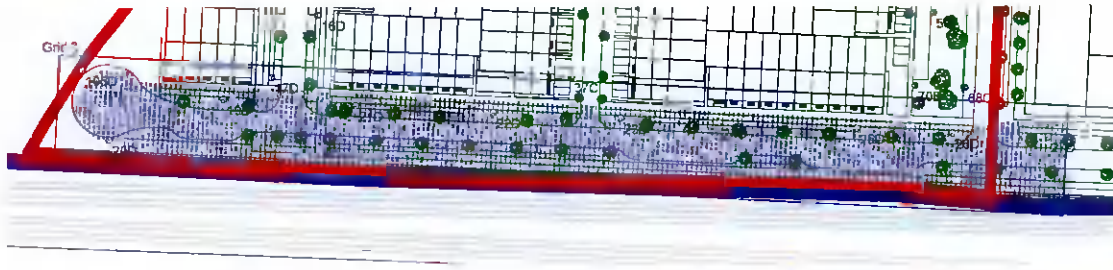


### Results

Eav	8.03
Emin	1.75
E <sub>max</sub>	19.67
E <sub>min</sub> /E <sub>max</sub>	0.09
E <sub>min</sub> /E <sub>av</sub>	0.22

## Horizontal Illuminance (lux)

Grid 3

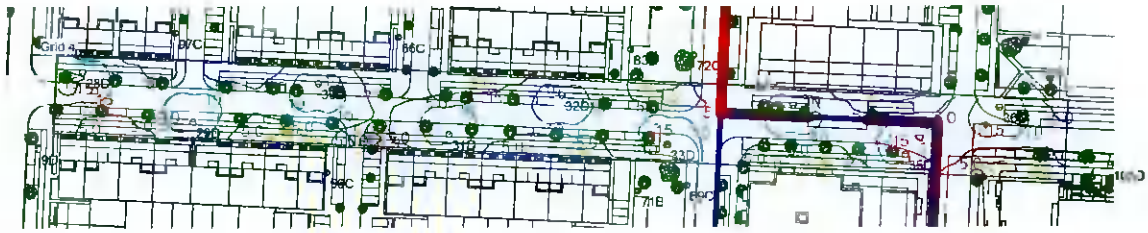


### Results

Eav	8.03
Emin	1.75
E <sub>max</sub>	19.67
E <sub>min</sub> /E <sub>max</sub>	0.09
E <sub>min</sub> /E <sub>av</sub>	0.22

## Horizontal Illuminance (lux)

Grid 4

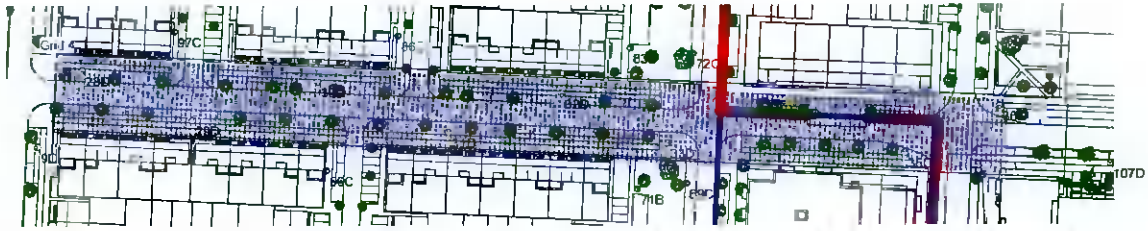


### Results

Eav	7.45
Emin	2.18
E <sub>max</sub>	16.73
E <sub>min</sub> /E <sub>max</sub>	0.13
E <sub>min</sub> /E <sub>av</sub>	0.29

## Horizontal Illuminance (lux)

Grid 4



### Results

Eav	7.45
Emin	2.18
E <sub>max</sub>	16.73
E <sub>min</sub> /E <sub>max</sub>	0.13
E <sub>min</sub> /E <sub>av</sub>	0.29

# Horizontal Illuminance (lux)

Grid 5

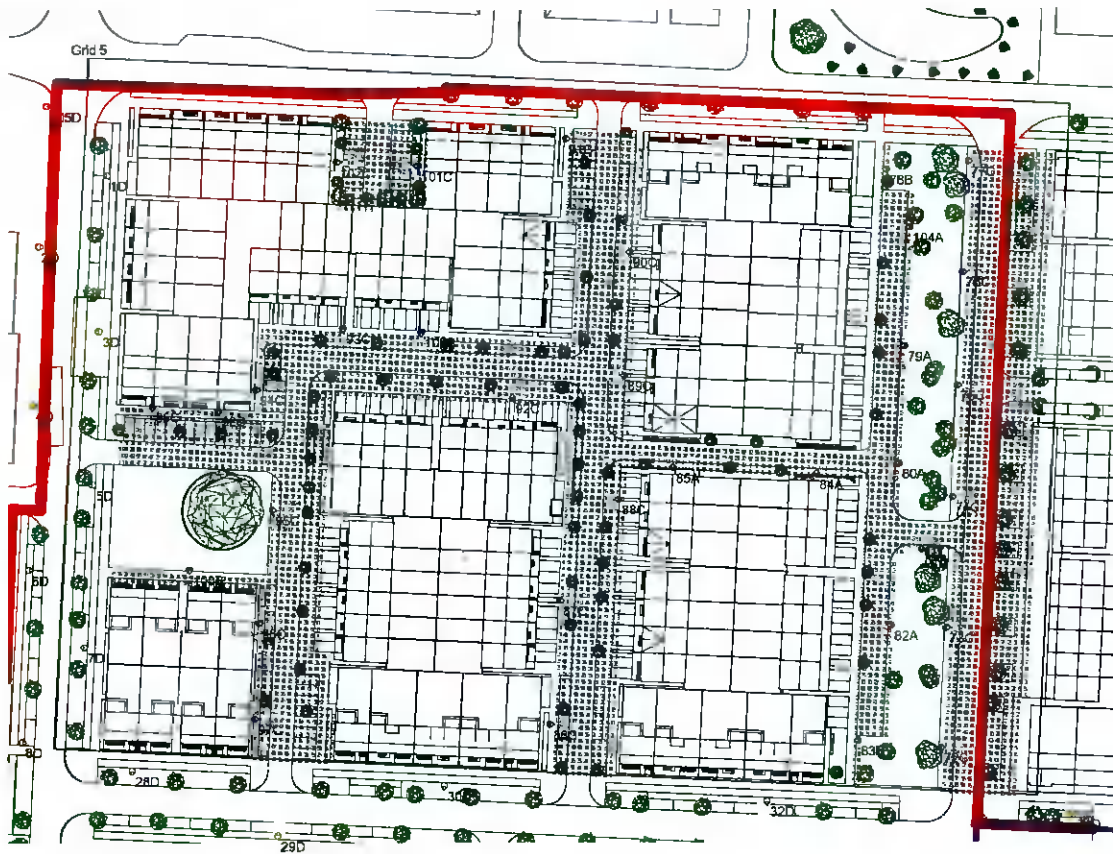


### Results

Eav	5.33
Emin	1.30
Emax	15.87
Emin/Emax	0.08
Emin/Eav	0.24

# Horizontal Illuminance (lux)

Grid 5



## Results

Eav	5.33
Emin	1.30
E <sub>max</sub>	15.87
E <sub>min</sub> /E <sub>max</sub>	0.08
E <sub>min</sub> /E <sub>av</sub>	0.24