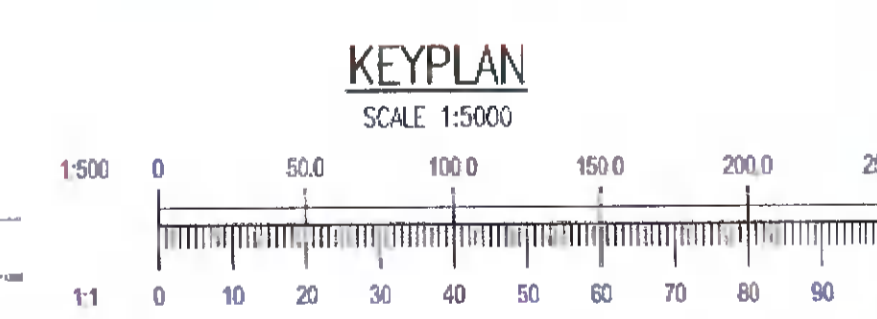
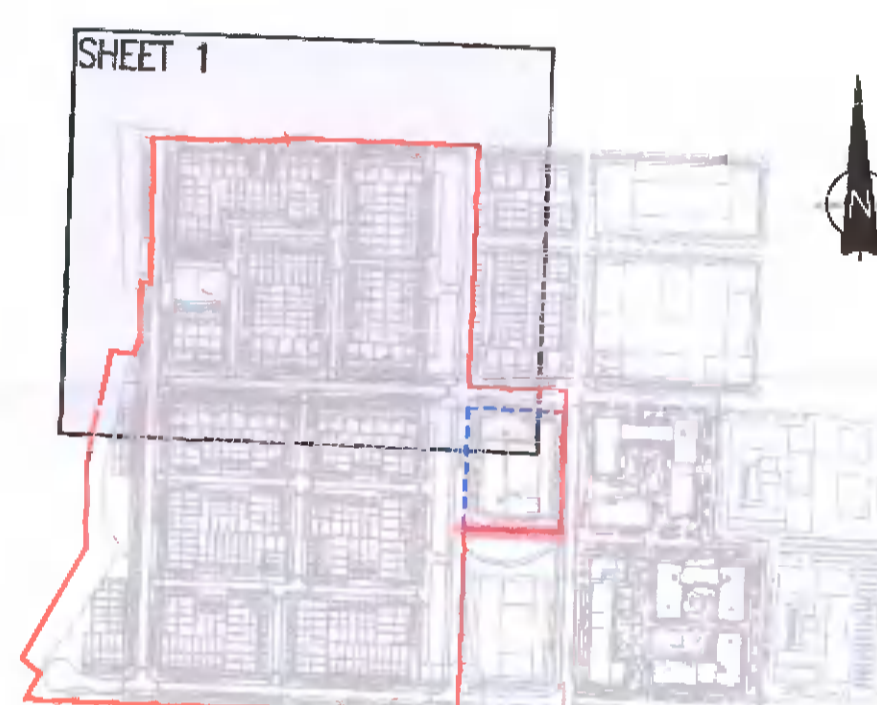
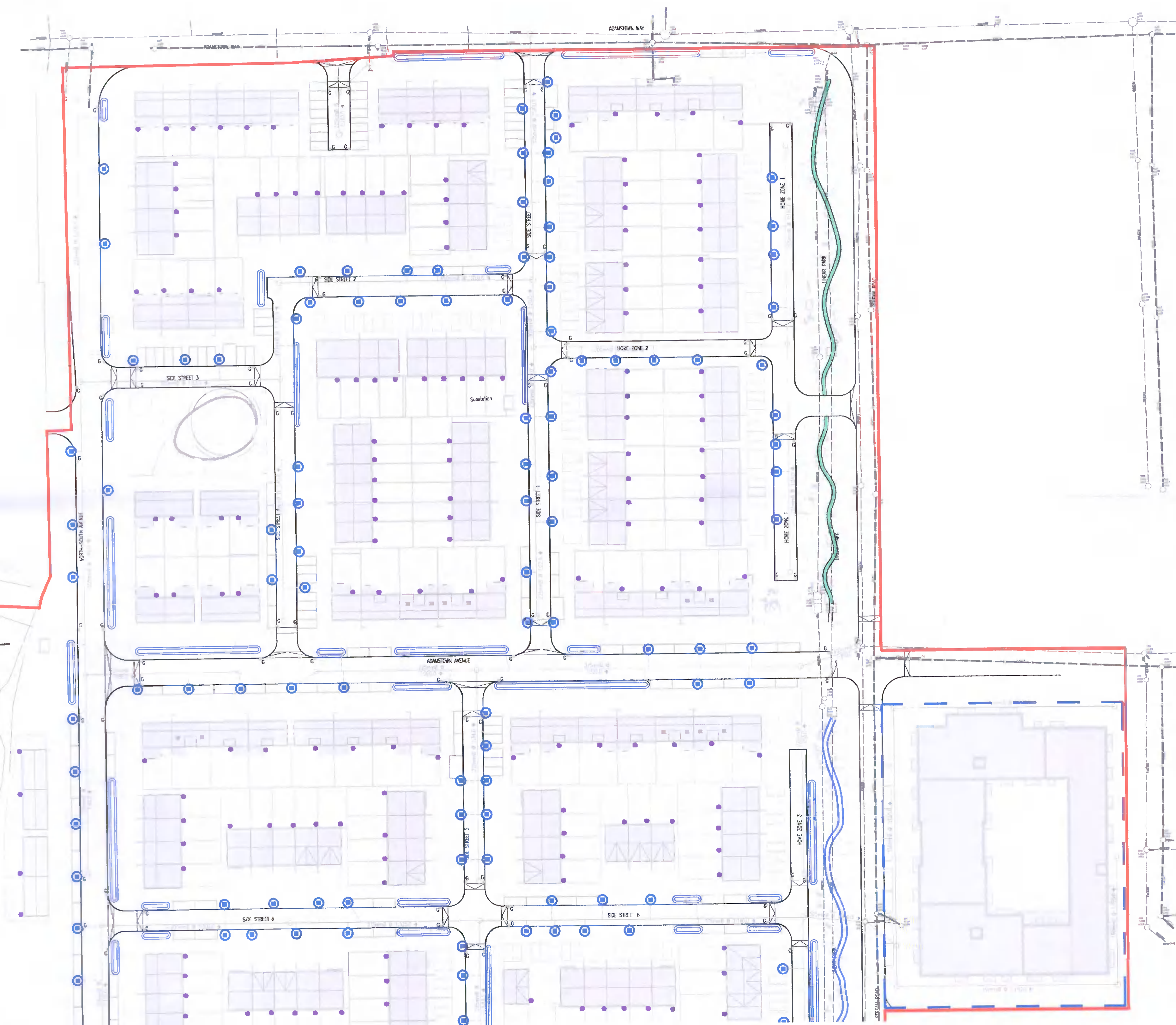




- NOTES:
- DO NOT SCALE. USE FIGURED DIMENSIONS ONLY.
 - THIS DRAWING IS TO BE READ IN CONJUNCTION WITH ALL OTHER RELEVANT ARCHITECTURAL AND ENGINEERING DRAWINGS.
 - IT IS THE CONTRACTOR'S RESPONSIBILITY TO ENSURE THAT ALL WORKS ARE CONSTRUCTED IN ACCORDANCE WITH THE IRISH WATER CODE OF PRACTICE AND STANDARD DETAILS. THE CODE OF PRACTICE AND STANDARD DETAILS ARE AVAILABLE TO DOWNLOAD FROM THE IRISH WATER WEB SITE AT WWW.WATER.EC/CONNECTIONS/DEVELOPER-SERVICES/ WHERE THE DETAILS CONTAINED ON THIS DRAWING DIFFER FROM THE IRISH WATER CODE OF PRACTICE OR STANDARD DETAILS THIS MUST BE BROUGHT TO THE ATTENTION OF THE ENGINEER IMMEDIATELY. IRISH WATER STANDARDS WILL TAKE PRECEDENCE.

LEGEND:

- EXTENT OF WORKS
- AREA SUBJECT OF APPLICATION FOR OUTLINE PERMISSION
- PROPOSED LINEAR RESERVE WATER FEATURE
- PROPOSED SWALE
- PROPOSED WATER BUTT
- PROPOSED BIORETENTION TREE PIT



REV.	DATE	AMENDMENT	DRN	APP
~	28/04/22	ISSUED FOR PLANNING	MS	EC

STATUS FOR PLANNING ONLY
NOT FOR CONSTRUCTION

Waterman Moylan
Engineering Consultants

MARINE HOUSE, CLANWILLIAM PLACE, DUBLIN D02 F24
Tel: (01) 664 8900 Fax: (01) 661 3618
Email: info@waterman-moylan.ie www.waterman-moylan.ie

CLIENT ADAMSTOWN STATION AND BOULEVARD LTD.
ARCHITECT MCCAULEY DAYE O'CONNELL ARCHITECTS LTD.

PROJECT
ADAMSTOWN - BOULEVARD TILE
PHASE 1

TITLE
PROPOSED SuDS LAYOUT
SHEET 1 OF 2

DRAWN MS	DESIGNED EC	APPROVED EC	DATE APRIL 2022
SCALE 1:500 @ A1	JOB NO. 21-074	DRG. NO. P216	REVISION ~

© 2022. This drawing is copyright. No part of this document may be reproduced or transmitted in any form or stored in any retrieval system without the written permission of the consulting engineer in copyright. No liability is accepted for use on the project for which it was not originally issued.