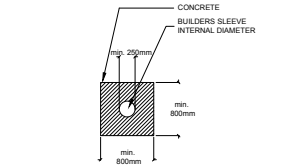
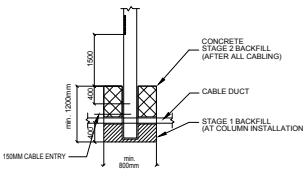


- LEGEND:
- 1. DOLLAR LUMINAIRE - FA175-AP06 BY EWO AS SUPPLIED BY GENERAL LIGHTING OR EQUIVALENT.
 - 2. COLUMN MOUNTED LED LUMINAIRE (1.3W LED TWILIGHT, BLB_EM06_X102 (BY GENERAL LIGHTING OR EQUIVALENT)) 4 METRE COLUMN IS REQUIRED
 - EX EXISTING LIGHTING
 - SITE BOUNDARY

- NOTES:
- THE DESIGN IS BASED ON LUMEN OUTPUT AT 2000 HOURS, LUMEN OUTPUT PER LAMP MANUFACTURERS DATA, SPOT LAMP REPLACEMENT, NORMAL ENVIRONMENT, ANNUAL CLEANING.
 - COLUMN BASES SHALL BE AS AGREED AND CONFIRMED WITH THE COLUMN SUPPLIER, BUT WILL TYPICALLY BE IN-LINE WITH DETAILS 2.
 - THIS DRAWING TO BE READ IN CONJUNCTION WITH ALL MECHANICAL & ELECTRICAL DRAWINGS AND SPECIFICATION ISSUED BY EDP FOR THE PROJECT. 2. THIS DRAWING TO BE READ IN CONJUNCTION WITH ARCHITECTS LAYOUT DRAWINGS AND SPECIFICATION.
 - THIS DRAWING TO BE READ IN CONJUNCTION WITH ARCHITECTS LAYOUT DRAWINGS AND SPECIFICATION.

DETAIL 2: TYPICAL 4 METRE LIGHTING COLUMN BASE DETAIL: EXACT DETAILS TO BE CONFIRMED WITH LIGHTING COLUMN SUPPLIER



DATE	REVISION	NO.
27.04.22	ISSUED FOR PLANNING	3
19.10.21	PRELIMINARY ISSUE	2
26.08.21	ISSUED FOR INFORMATION	1

PROJECT
**BROOMHILL ROAD
 TALLAGHT
 CO. DUBLIN**

TITLE
EXTERNAL LIGHTING LAYOUT

DRAWING No:	SCALE		
1099 - S001	1:250 @ A1		
DRN:	CHKD:	APPRD:	DATE:
GO	SOC	##	AUGUST 2021
FILE LOC:			



Block B1,
 Centropoint Business Park
 Oak Road, Dublin 12, Ireland.
 Tel: +353-1-4092800
 Fax: +353-1-4092858
 email: admin@edp-engineers.com
 web: edp-engineers.com

