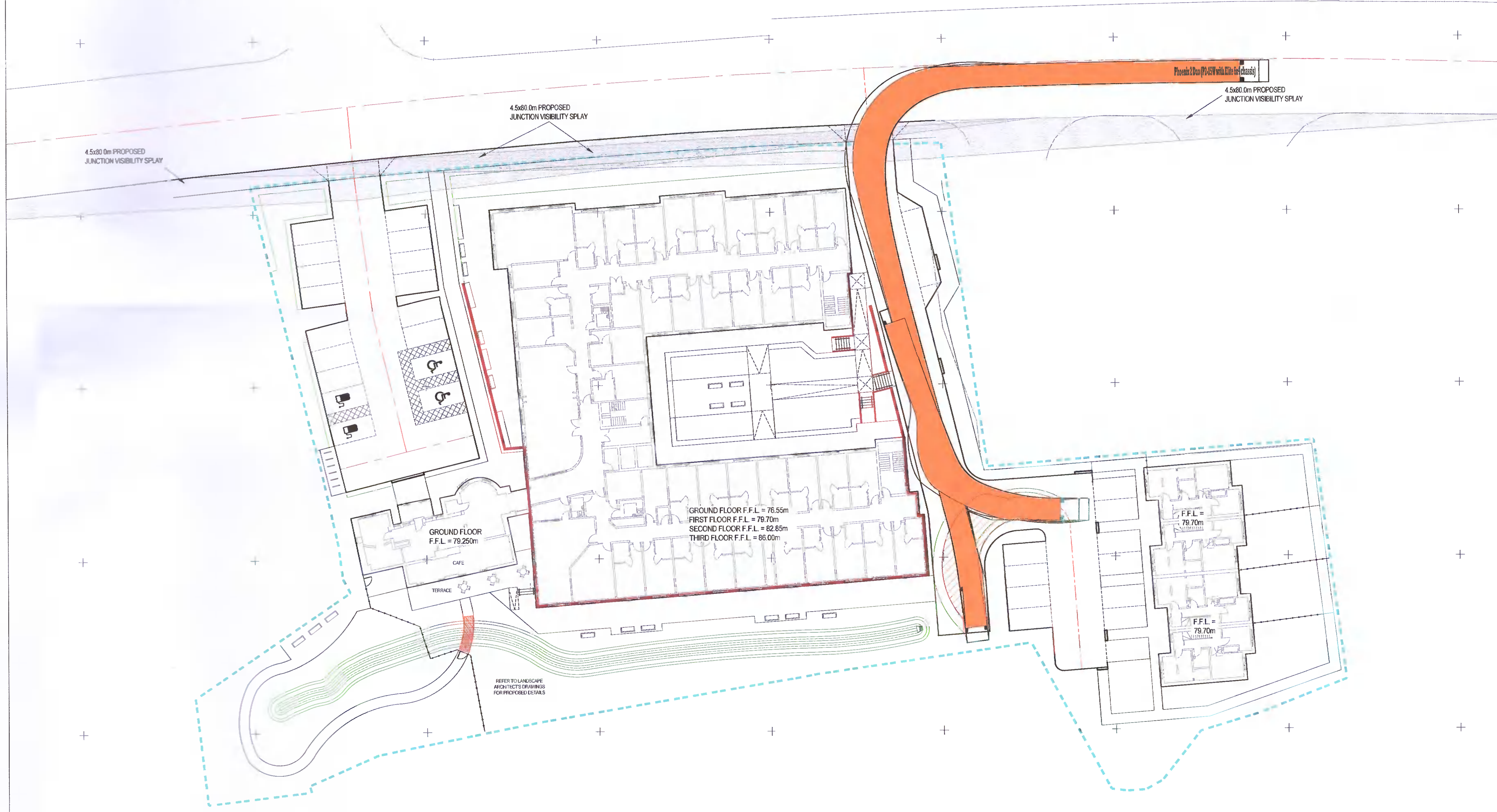


Phoenix 2 Duo (P2-15W with Elite 6x4 chassis)
Overall Length 11.200m
Overall Width 2.550m
Overall Body Height 3.751m
Min Body Ground Clearance 0.304m
Track Width 2.500m
Lock to lock time 4.00s
Kerb to Kerb Turning Radius 9.500m



Rev.	Description	By	App'd	Date
C	REVISED FOR CAR PARKING LAYOUT	L.M.	G.R.P.	31.03.22
B	REVISED FOR NEW CAR PARKING LAYOUT	L.M.	G.R.P.	28.02.22
A	CAR PARKING BAYS RELOCATED & MIN 2.0m REVERSE REQUIREMENT PROVIDED TO SUIT PLANNING COMMENTS.	G.R.P.	G.R.P.	22.02.22

Client
 Morrison Community Care Group

Development
 Residential Care Home
 Taylors Lane, Rathfarnham
 Dublin

Drawing Title
 Proposed Autotrack Layout
 Refuse Vehicle

Scale at A1	Date	Drawn	Approved
1:250	Nov 2021	SK	G.R.Porch

Cowal Design Consultants
 Civil & Structural Engineering • Development Services

Dunoon- 01369 707 692 Glasgow- 0141 406 1688
 London- 020 3856 6144 Oban-01631 571 280

WEB-www.cowaldesign.co.uk
 Email-info@cowaldesign.co.uk

Copyright, Designs and Patents Act 1988
 This drawing must not be reproduced without the permission of Cowal Design Consultants Ltd.

Status	PLANNING
Drawing No	21-3406-C-SK-051
Rev	C