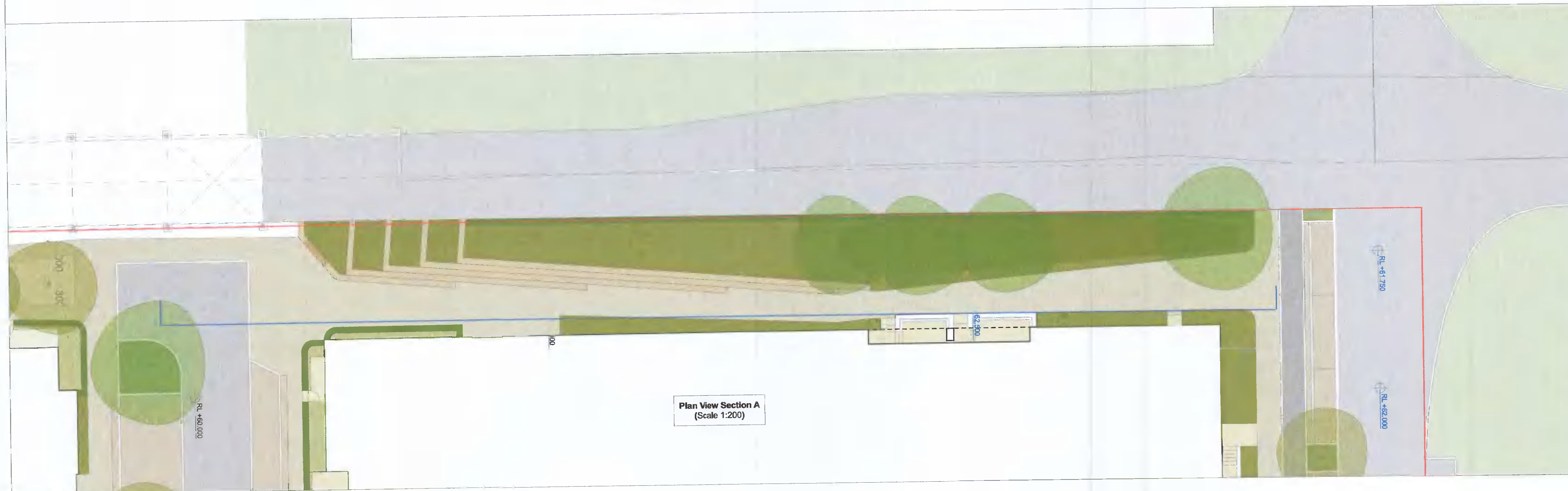


- NOTES**
1. All dimensions in millimetres unless otherwise shown.
 2. All levels in metres above Ordinance Datum (mAOD) unless otherwise shown.
 3. All dimensions to be checked on site and any discrepancies reported to Employer before pricing / work starts.
 4. Any ambiguities or discrepancies within this drawing and any other information given elsewhere must be reported to Camlins and the Employer for clarification before pricing work proceeds.
 5. All drawings to be read in conjunction with other Camlins drawings and specification information as appropriate.
 6. Refer to relevant Engineer's and Architect's information as appropriate for confirmation of all engineering and architectural details.
 7. All works to be carried out in accordance with the latest British Standards and appropriate codes of practice as a minimum.

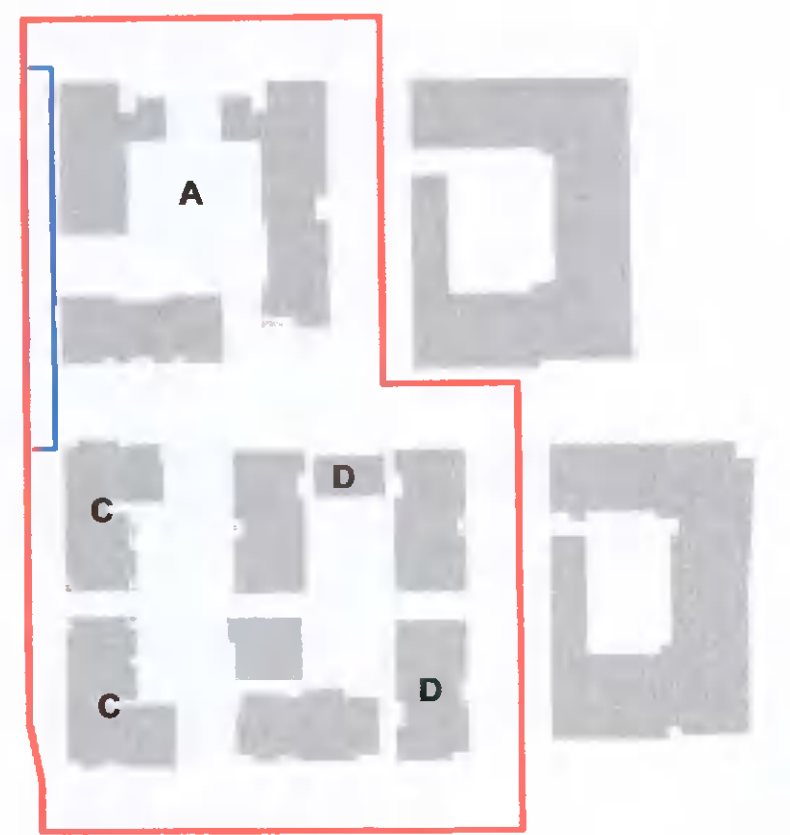
NOTES



Section A
(Scale 1:200)



Plan View Section A
(Scale 1:200)



Camlins

New Dolanog House, Severn Road,
Welshpool, Powys, SY21 7AR
01938 584566
www.camlins.com

Adamstown District Blocks A, C, D
Quintain Developments Ireland Ltd

Section A

Status Planning	Revision -	Scale 1:200@A1	Drawn by RS	Checked by PSS
Drawing Number LL591-200-0101	Date 07.04.2022			