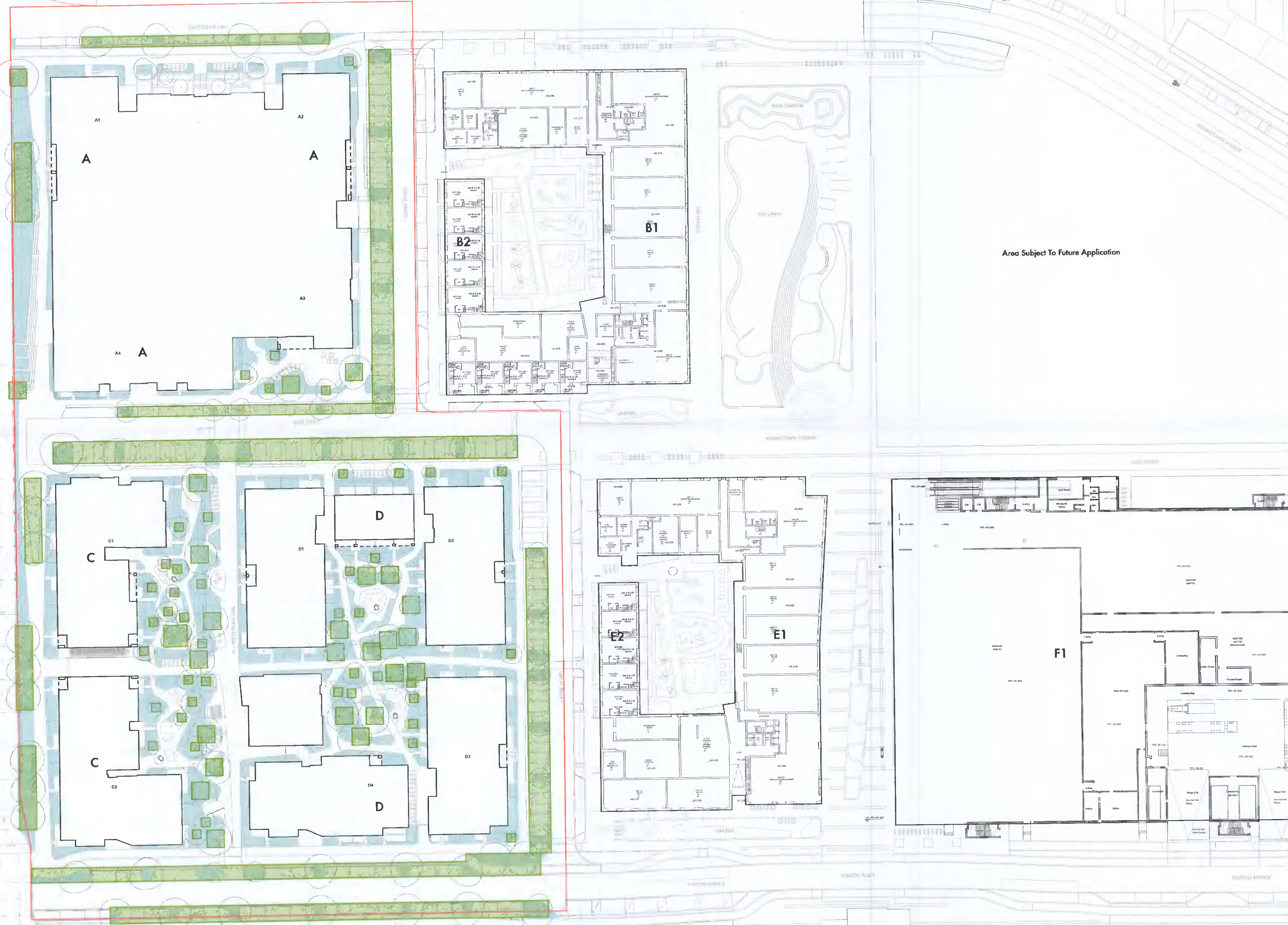


- NOTES**
1. All dimensions in millimetres unless otherwise shown.
 2. All levels in metres above Ordnance Datum (mAOD) unless otherwise shown.
 3. All dimensions to be checked on site and any discrepancies reported to Employer before pricing / work starts.
 4. Any ambiguities or discrepancies within this drawing and any other information given elsewhere must be reported to Camlins and the Employer for clarification before pricing work proceeds.
 5. All drawings to be read in conjunction with other Camlins drawings and specification information as appropriate.
 6. Refer to relevant Engineer's and Architect's information as appropriate for confirmation of all engineering and architectural details.
 7. All works to be carried out in accordance with the latest British Standards and appropriate codes of practice as a minimum.

- KEY**
- Planning Application Site Boundary
- SuDS Opportunities**
- Attenuating Tree Pit**
Generally continuous trench under public realm surfacing, with openings at surface to plant trees
 - Surface Swales**
Green planted areas just below street level where surface water flows directly in from adjacent surfacing.



Rev.	Date	Description	Revised by	Checked by

Camlins
 New Zealand House, Abbey Foregate,
 Shrewsbury, Shropshire, SY2 6FD
 01743 290 770
 www.camlins.com

Adamstown District Centre Blocks A, C, D
 Quintain Developments Ireland Ltd

GA SuDS Opportunities Plan

Status	Planning	Drawn by	RS	Checked by	PSS
Drawing Number	LL591-200-0085	Revision	-	Scale	1:500@A1
Date	07.04.2022				