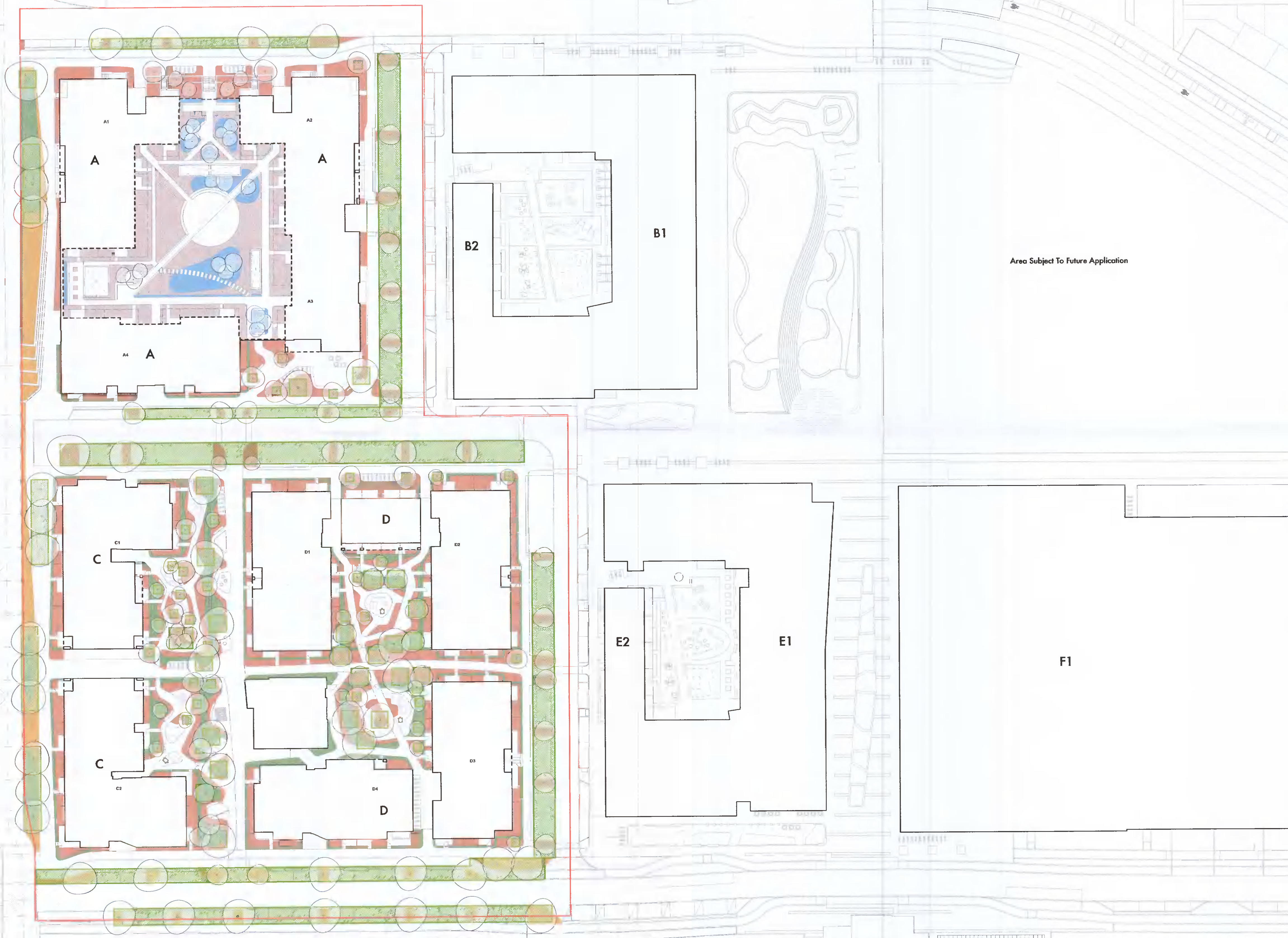


- NOTES**
1. All dimensions in millimetres unless otherwise shown.
 2. All levels in metres above Ordnance Datum (mAOD) unless otherwise shown.
 3. All dimensions to be checked on site and any discrepancies reported to Employer before pricing / work starts.
 4. Any ambiguities or discrepancies within this drawing and any other information given elsewhere must be reported to Camlins and the Employer for clarification before pricing work proceeds.
 5. All drawings to be read in conjunction with other Camlins drawings and specification information as appropriate.
 6. Refer to relevant Engineer's and Architect's information as appropriate for confirmation of all engineering and architectural details.
 7. All works to be carried out in accordance with the latest British Standards and appropriate codes of practice as a minimum.

- KEY**
- Planning Application Site Boundary
 - Podium Level

- Public Realm**
- Continuous Urban Soil Tree Planting Strips. Generally continuous trench under public realm surfacing, with openings nom. 1800mm by 1800mm at surface to plant / replant trees
 - Growing Medium Over Open Ground For Areas Of Grass. Topsoil and subsoil over free draining substrate. Overall growing medium build up of 300mm with maximum 150mm depth of topsoil or up to 1200mm for tree planting
 - Growing Medium Over Open Ground For Areas Of Smaller Shrub And Perennial Planting. Topsoil and subsoil over free draining substrate. Overall growing medium build up of 600mm with maximum 300mm depth of topsoil or up to 1200mm for tree planting
 - Growing Medium Over Open Ground For Areas Of Larger Shrub And Perennial Planting. Topsoil and subsoil over free draining substrate. Overall growing medium build up of 800mm with maximum 300mm depth of topsoil or up to 1200mm for tree planting

- Communal Garden**
- Growing Medium Over Podiums For Herbaceous Planting. Topsoil and subsoil up to 400mm depth. Suitable for shrub, climber and herbaceous planting
 - Growing Medium Over Podiums For Trees. Topsoil and subsoil up to 750mm depth. Suitable for all planting, including small trees depending on local depths.



Rev.	Date	Description	Revised by	Checked by

Camlins
 New Zealand House, Abbey Foregate,
 Shrewsbury, Shropshire, SY2 8BZ
 01743 290 779
 www.camlins.com

Adamstown District Centre Blocks A, C, D
 Quintain Developments Ireland Ltd

GA Growing Medium Formation Plan

Status Planning	Drawn by RS	Checked by PSS
Drawing Number LL591-200-0061	Revision -	Date 07.04.2022
	Scale 1:500@A1	