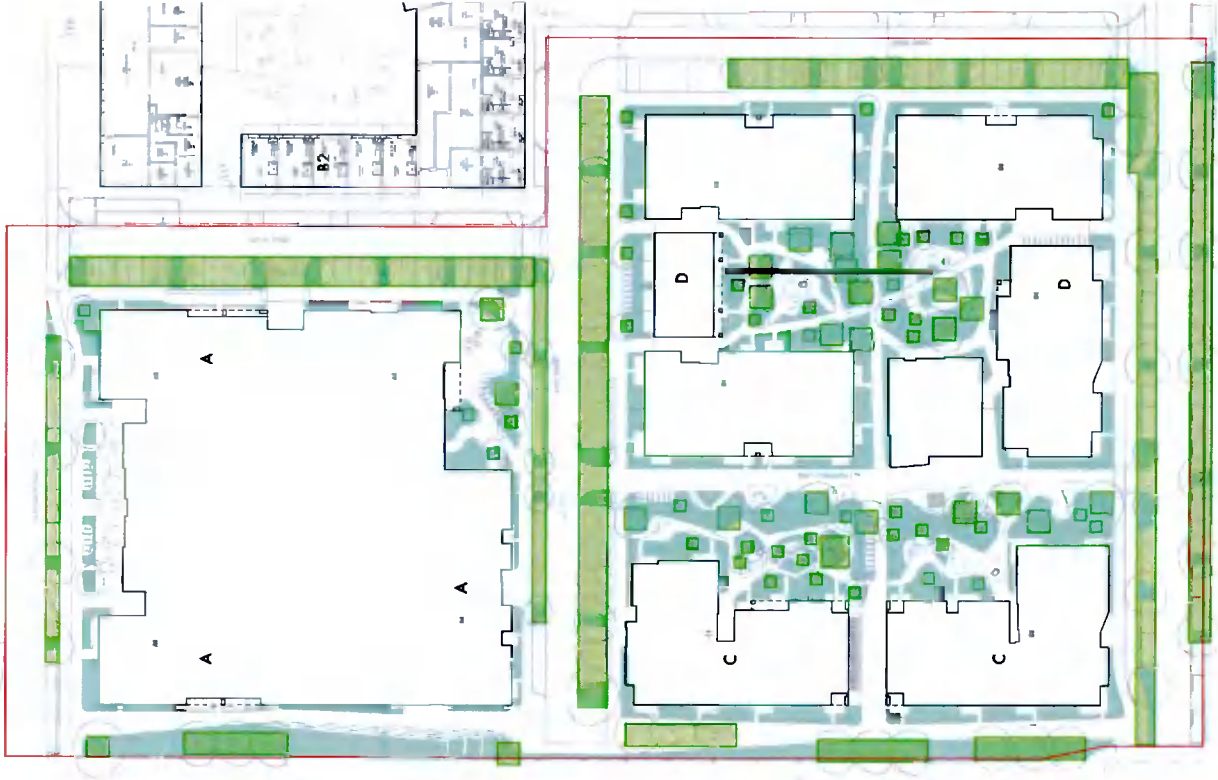
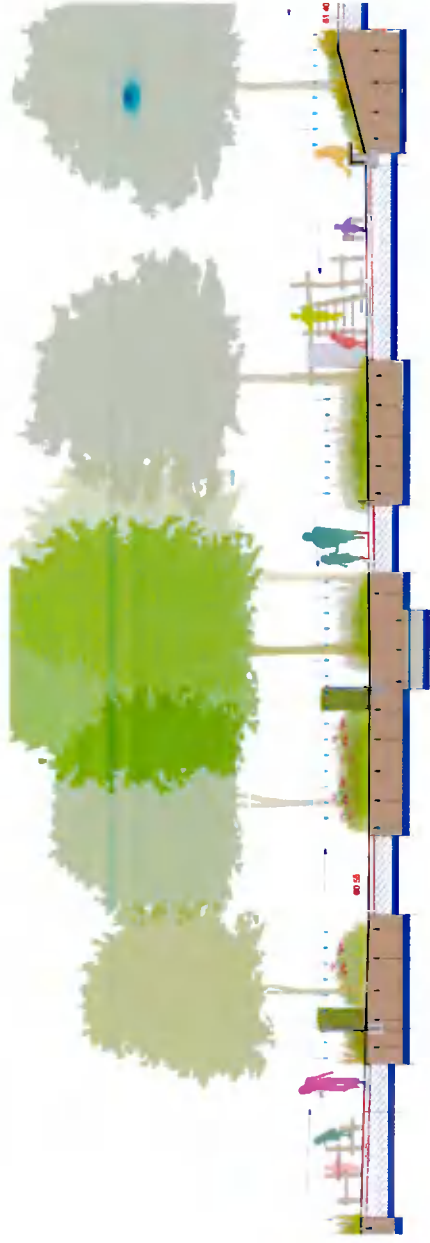


## LANDSCAPE STRATEGY SUDS OPPORTUNITIES

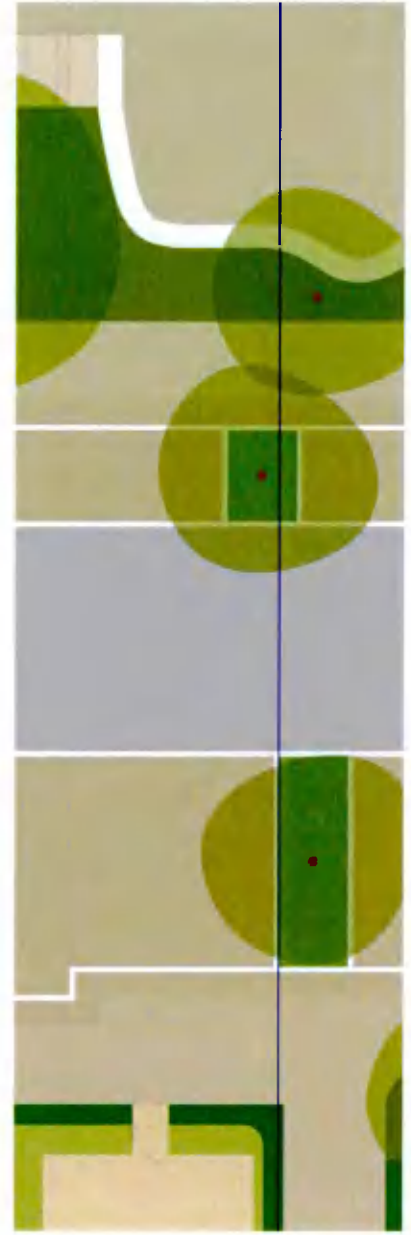
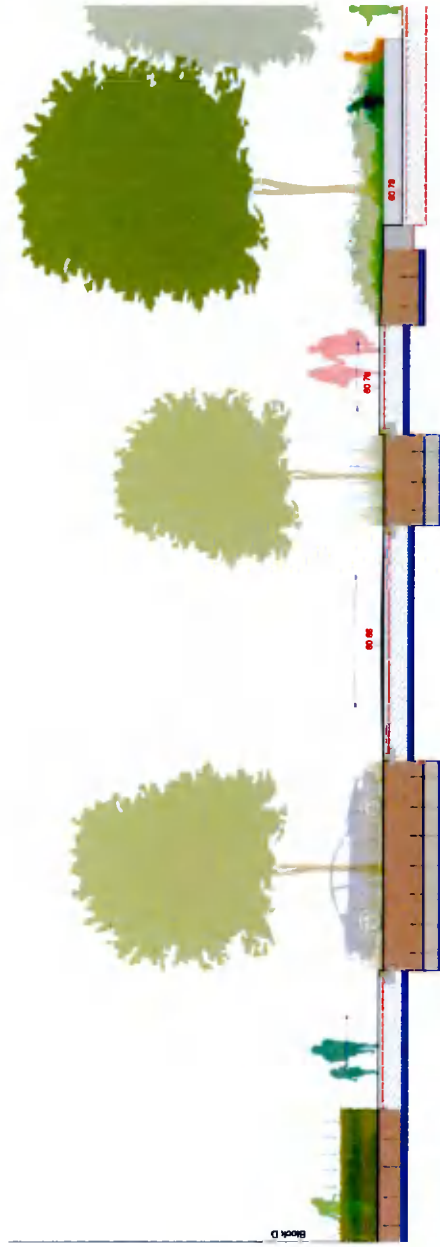
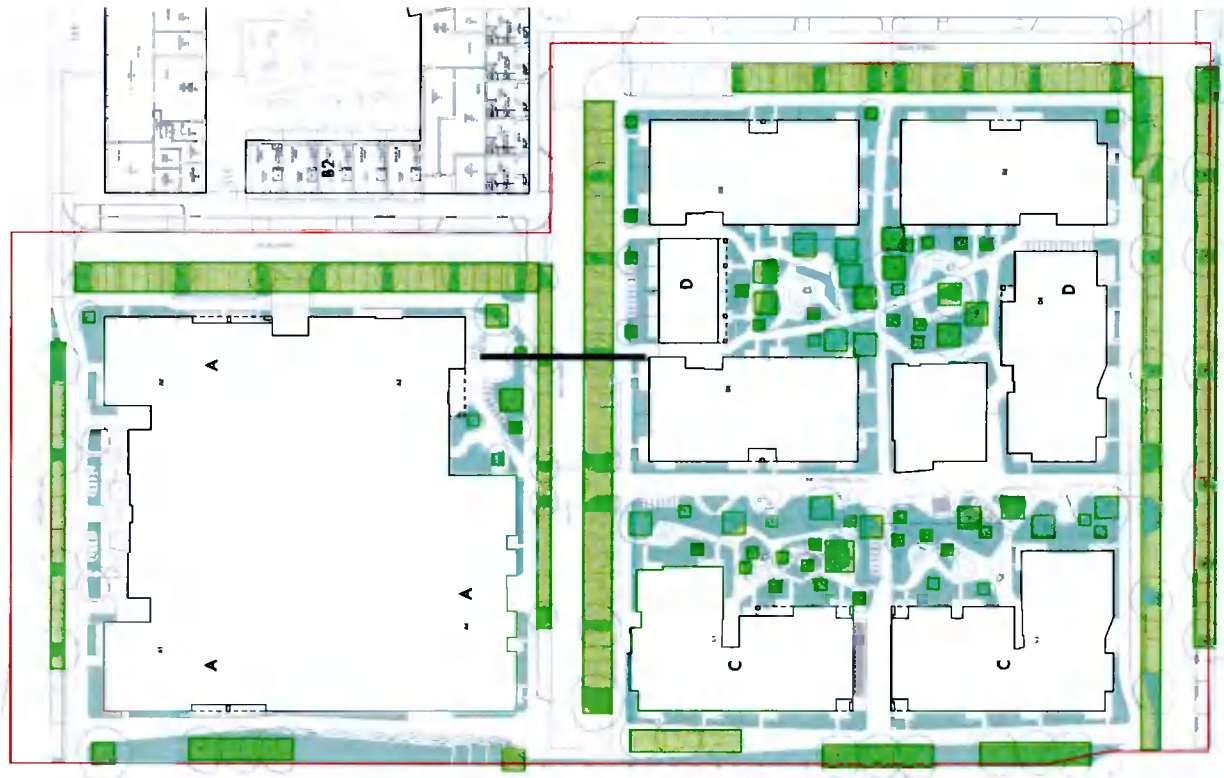
The SuDS strategy is a nature based solution aims to maximise the amount of evapotranspiration.

All planted areas are to be free draining and are flush or below impermeable hard surface levels to capture and infiltrate run off.

Road side tree pits and planting will be a continuous connected trench pit below hard surfacing to enable a higher attenuation volume of rainfall and capture hard surface runoff, treating the hydrocarbons through phytoremediation Plant species will be resilient to both dry and wet fluctuations



# LANDSCAPE STRATEGY SUDS OPPORTUNITIES



Refer to drg. no. LL591-200-0085

# LANDSCAPE STRATEGY IMPLEMENTATION OF LANDSCAPE WORKS

## DURING CONSTRUCTION PERIOD 24 MONTHS

