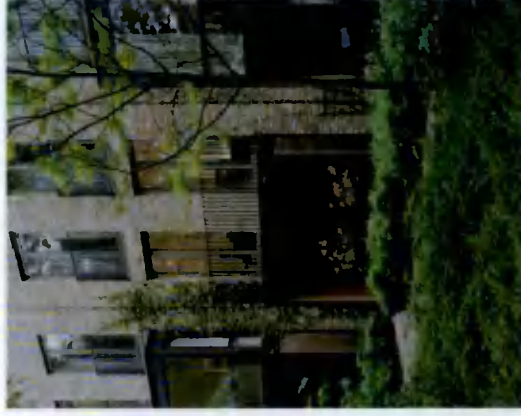


LANDSCAPE STRATEGY BLOCKS C, D - SECURE COMMUNAL SPACE

A low green boundary defines the communal gardens preserving visual connection with public space. The communal spaces are naturally activated through daily use to access building core and ground floor residential units. There are dedicated play areas as well as elements like rocks, trees and subtle landforms that provide opportunity for informal play. The spaces are well observed from adjacent blocks, ground floor gardens but also have plenty of seating for adult supervision.

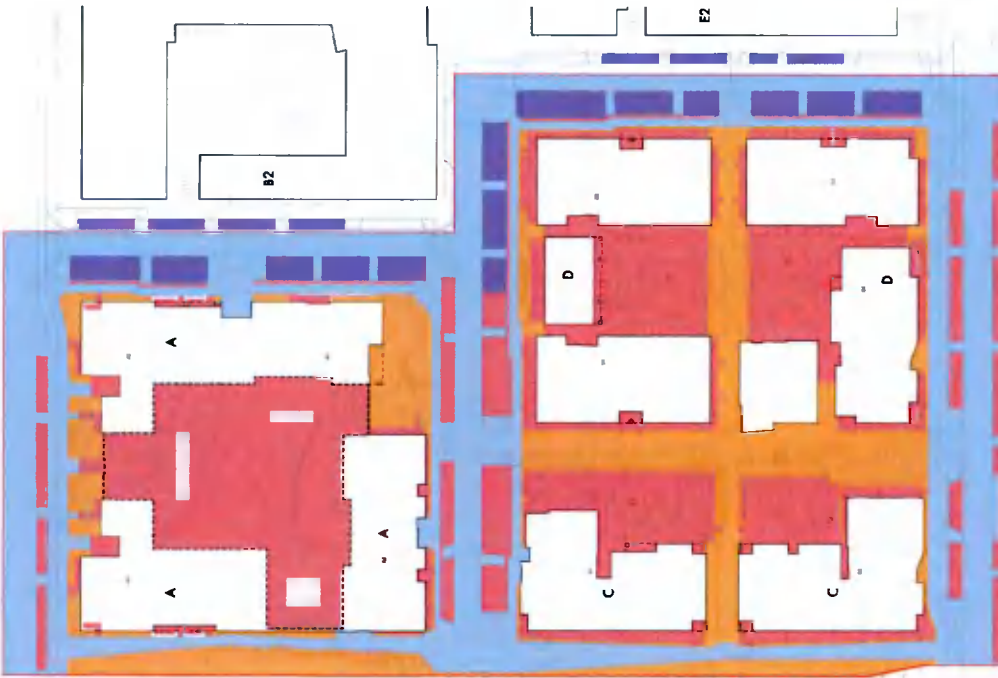


LANDSCAPE STRATEGY PUBLIC REALM DETAIL

Taken In Charge

The areas proposed to be taken in charge include the Adamstown Avenue, West Station Avenue, West Street and Linking Streets. These areas have been selected to ensure they are contiguous, to assist the City Council in their management, and prevent any island areas which could cause access issues. Selected areas of taller planting for wind mitigation along south north pedestrian routes wont be taken in charge. On-street parking spaces will be kept private with trees in between to be taken in charge.

The main services entering the site from outside the development use Station or Adamstown Avenue as the link into the development, where services then disperse to individual blocks. The council taking in charge main avenues means it can mediate any works between outside and inside the development.



Refer to drg. no. LL591-200-0005

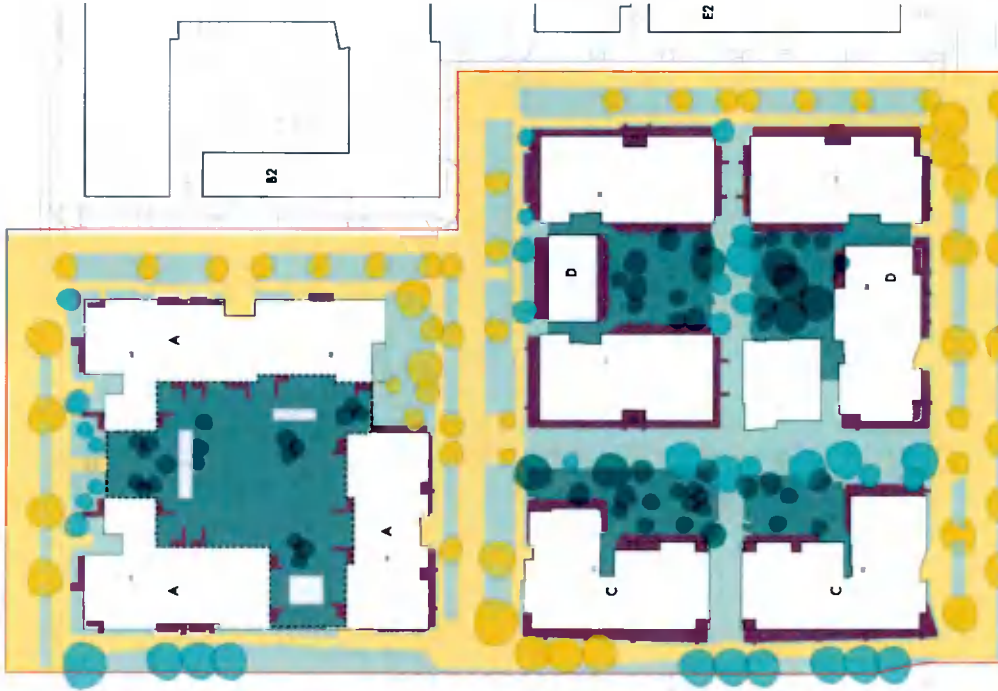
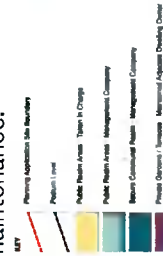
Management and Maintenance

Careful consideration has been given to who will be responsible for the maintenance and management of all external spaces. The adjacent diagram differentiates each of the different managers involved.

The principal pedestrian and vehicle traffic corridors is proposed to be maintained by local council and designed to minimise the maintenance burden by using materials that are hardwearing and easy to replace.

Certain areas of planting within public realm will be maintained by management companies, including shrub planting for wind mitigation, perennial planting along the building facade and hedge treatment to boundaries.

A selected management company is responsible for upkeep and maintenance of central public spaces. There should be appropriate financial provision for future maintenance.

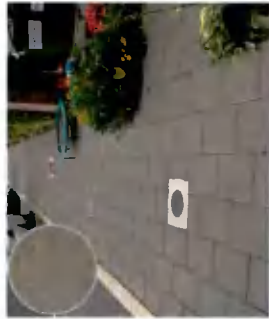


Refer to drg. no. LL591-200-2306

LANDSCAPE STRATEGY PUBLIC REALM DETAIL - MATERIALITY



Bitmac Carriageway Surface



Concrete Blocks Footway



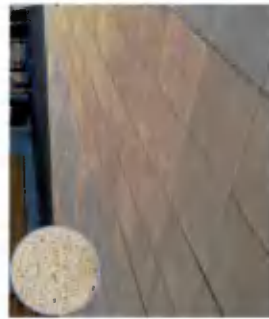
Concrete Blister Tactile Paving



Bitmac With Red Chippings



Concrete Blocks For Parking Bay



Textured Coloured Concrete Flags



Bitmac Cycleway Surface



Bitmac With Coloured Wearing Course



Self Binding Gravel



Refer to drg. no. LL591-200-0041

LANDSCAPE STRATEGY
PUBLIC REALM DETAIL - FURNITURE AND STRUCTURES



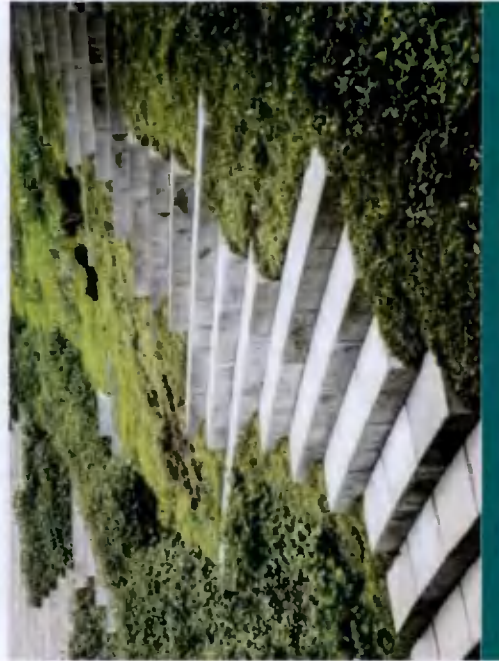
Timber Seat With Backrest And Armrest



Cycle Stands



Cabion Walls With Seat



Informal Concrete Steps

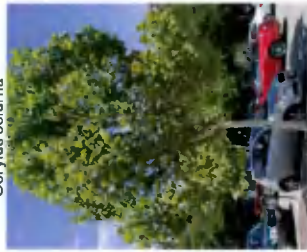


Refer to drg. no. LL591-200-0051

LANDSCAPE STRATEGY PUBLIC REALM DETAIL - TREES



Corylus colurna



Platanus x acerifolia



Prunus avium



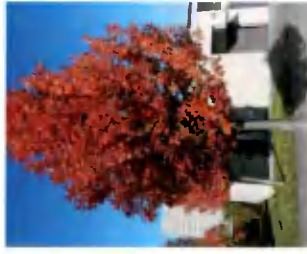
Acer campestre



Pyrus calleryana 'Chanticleer'



Sorbus intermedia



Malus trilobata



Acer campestre



Prunus padus 'Albertii'



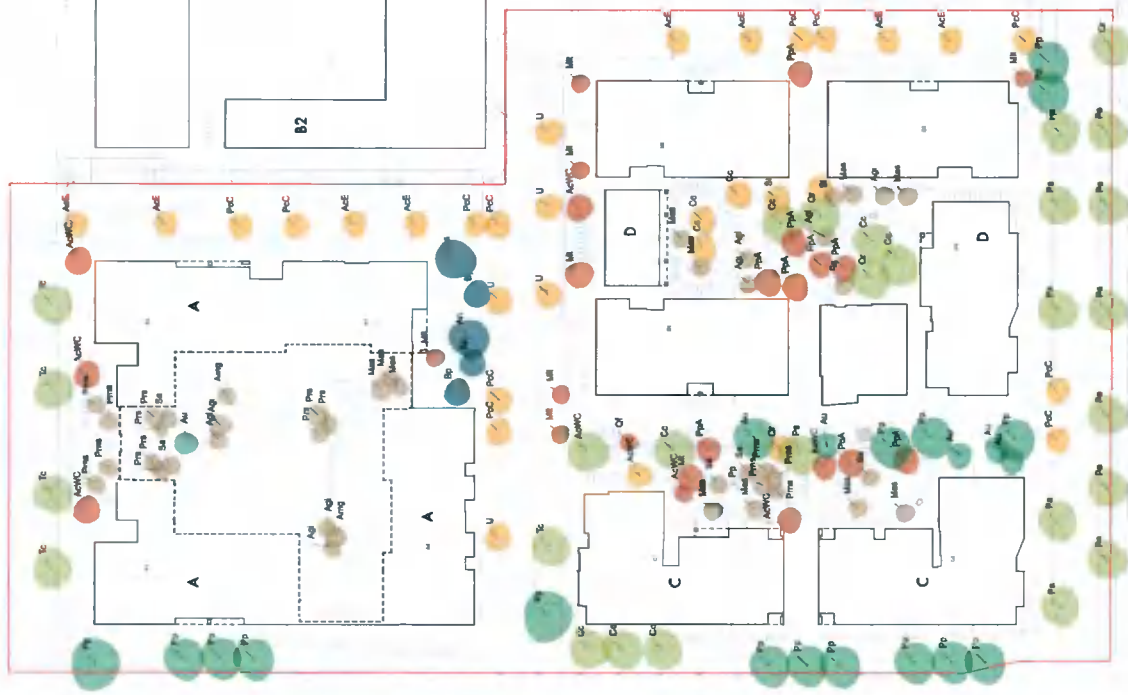
Acer negundo



Betula pendula



Alnus glutinosa 'Sakari'



Large Urban Tree 5-8m

Medium Street Tree 3-5m

Compact Street Tree 2-3m

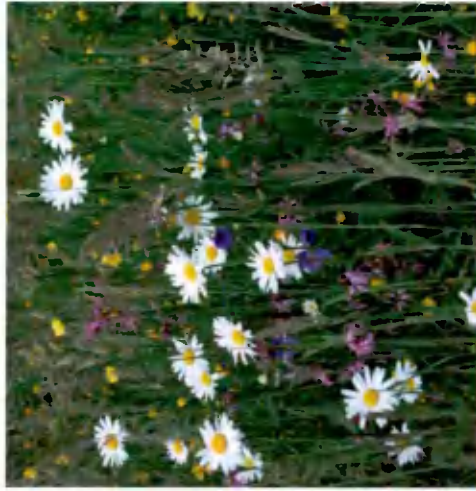
Swale Trees

Refer to drg. no. LL591-200-0071

LANDSCAPE STRATEGY
PUBLIC REALM DETAIL - LOW LEVEL PLANTING



Selection of native species of climbing plants and shrubs



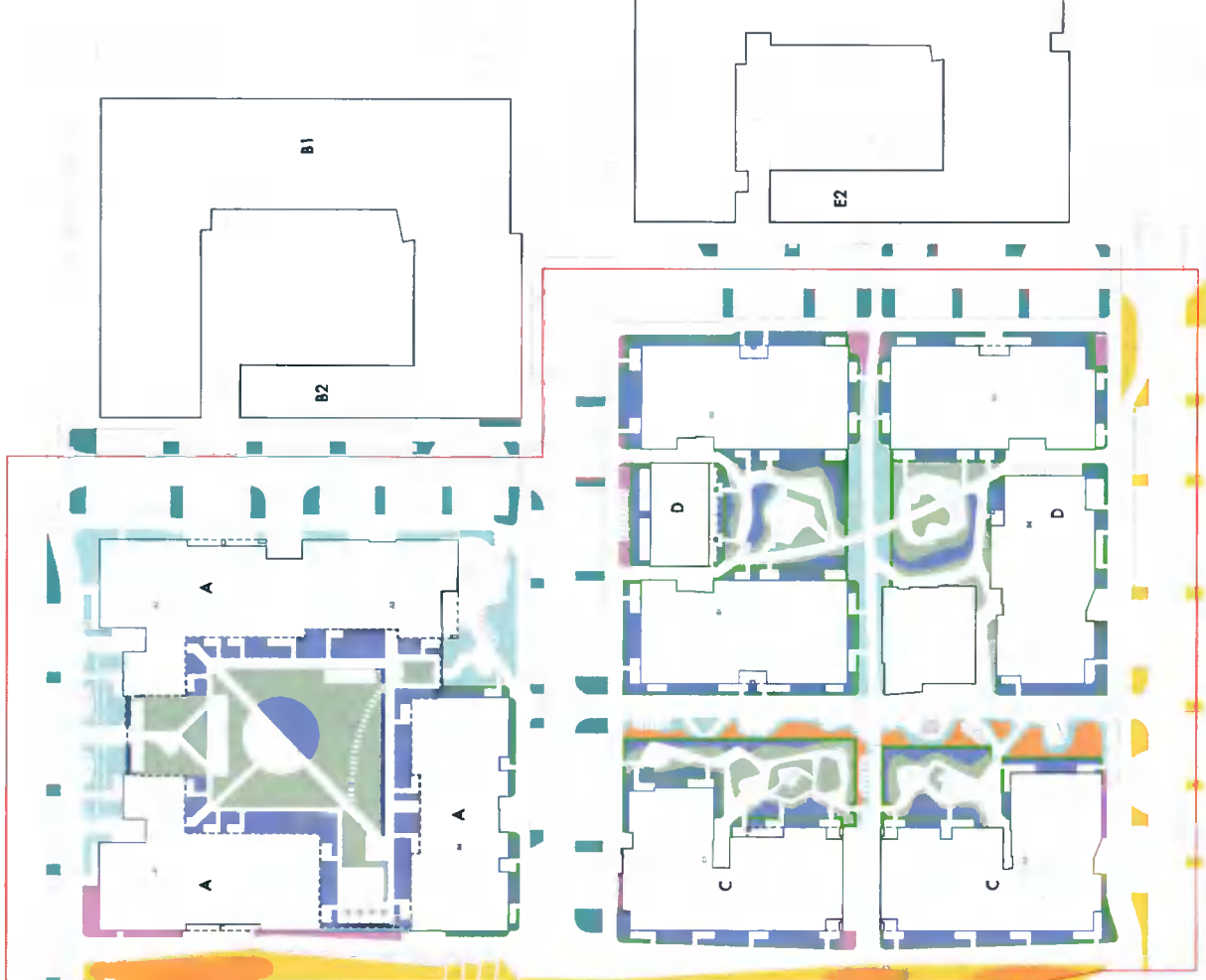
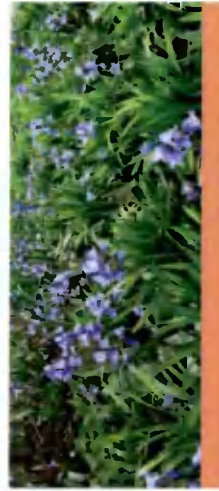
Public realm biodiverse wildflower planting



Street SuDS woodland character planting



Woodland-edge herbaceous and shrub planting with seasonal interest



Refer to drg. no. LL591-200-0081