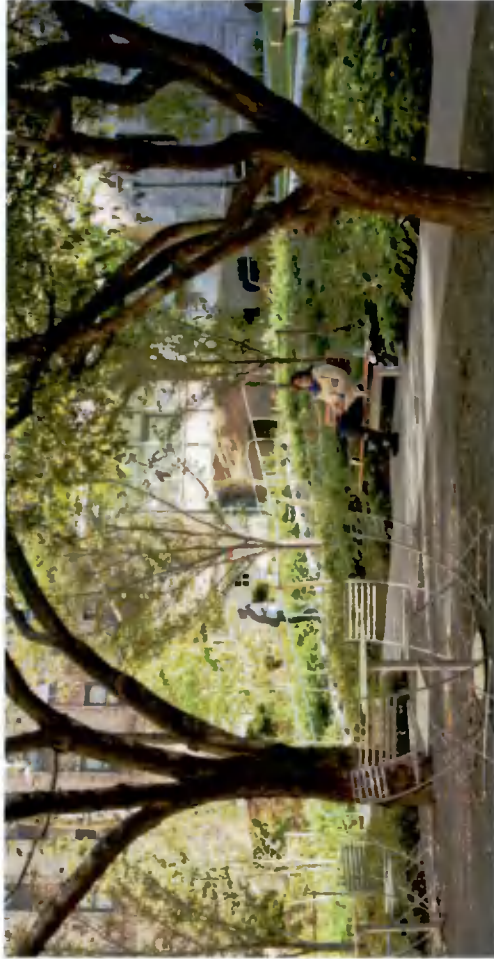


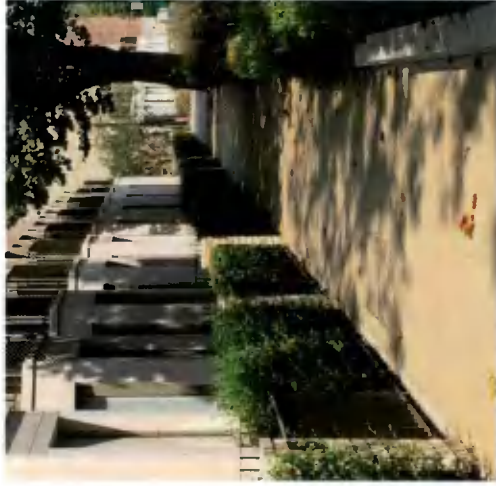
LANDSCAPE STRATEGY BLOCK A - PUBLIC REALM POCKET PARK

South facing pocket park is seen from the Adamstown square and south north pedestrian route. It can be accessed from the east following informal planted steps or step free from south. The combination of public thoroughfare and residential entrance to the block brings good passive surveillance. Amenity space facing the park can spill out directly into the public space, creating a secondary outdoor amenity area for residents



LANDSCAPE STRATEGY WEST STREET

West street connects the neighbourhood with the town centre providing vehicular, cycle and pedestrian access to the blocks. The street accommodates parking spaces alternated by street trees and softened with SuDS planting and offers a continuation of the landscape design / form from the Phase 1 development.



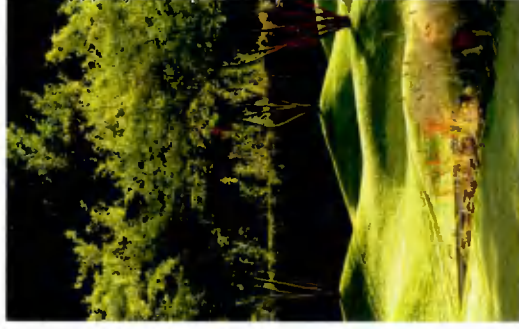
LANDSCAPE STRATEGY BLOCK A - SECURE COMMUNAL SPACE

This communal garden sits over the ground floor car park, and incorporates openings for its ventilation. The resulting feature is open to the sky, drawing light and greenery into the void. A 1.3m high guard rail is secured to the edge to for safety.

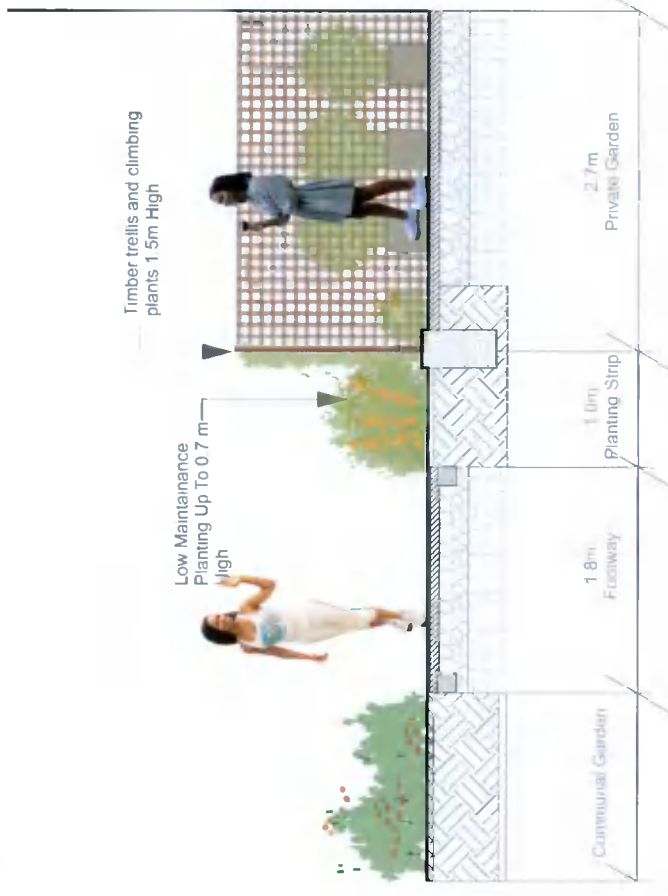
A residents-only, podium level, courtyard provides an opportunity to create an area of secure play, and space for residents to gather, where younger children can play outside, supervised by adults.

Flexible timber play equipment and subtle landforms increase the diversity of play types.

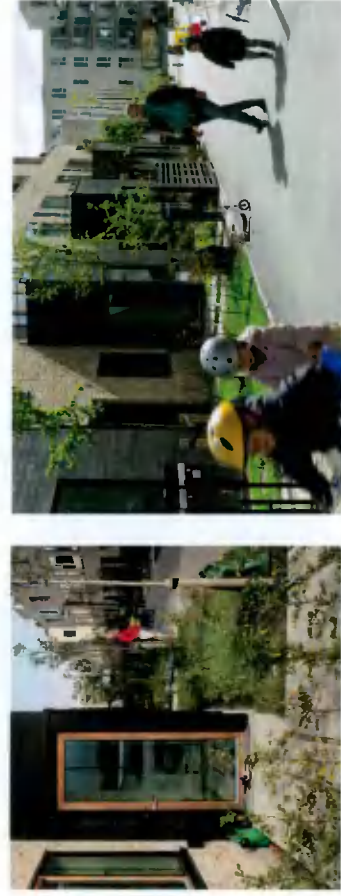
The series of green spaces with pergolas, planters and benches create an attractive setting for people to meet and interact.



LANDSCAPE STRATEGY
BLOCK A- SECURE COMMUNAL SPACE



BLOCK A

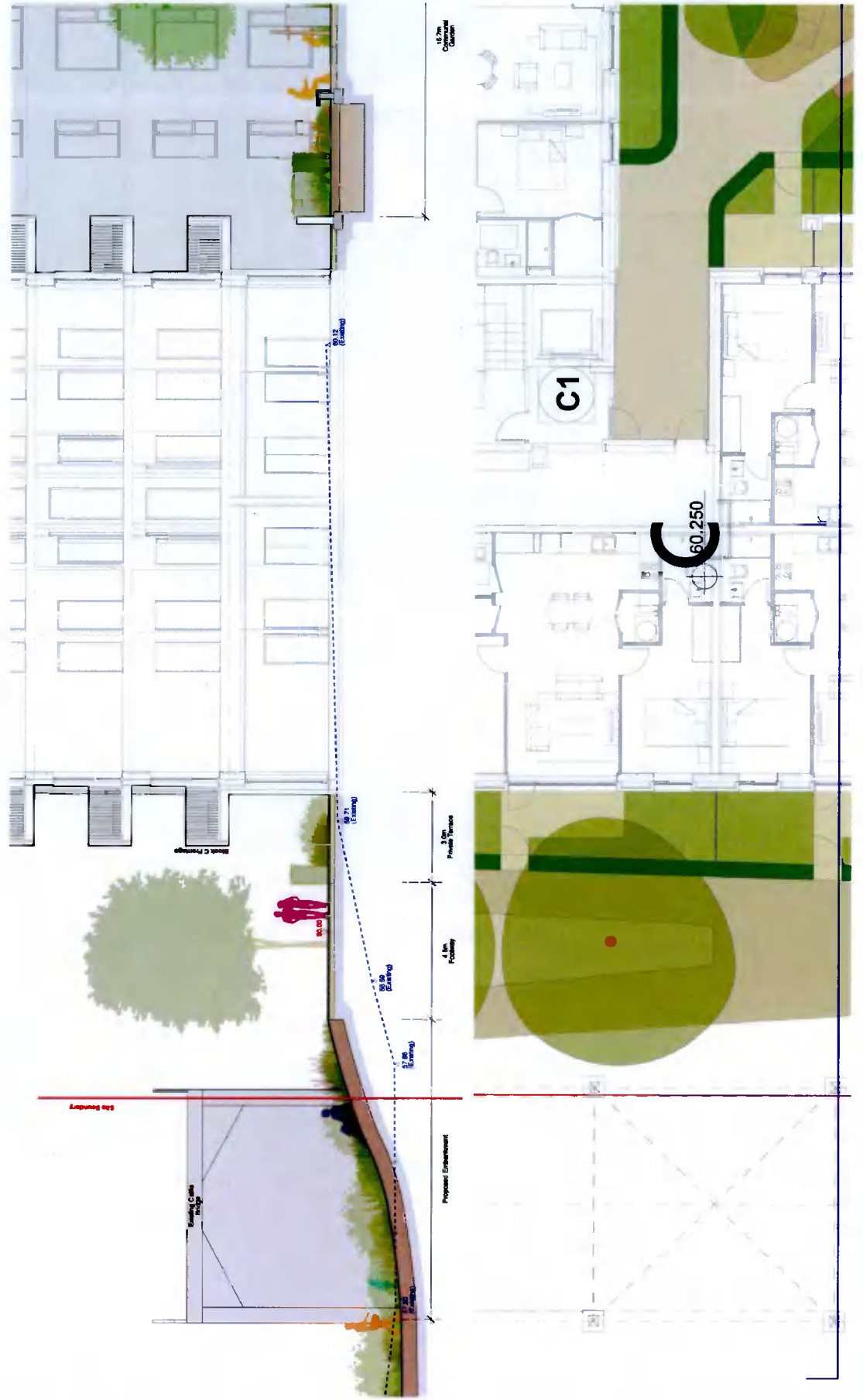


LANDSCAPE STRATEGY LANDSCAPE PLAN BLOCKS C & D

This part of neighbourhood is an attractive green space with clear connections to the main town destinations. The established hierarchy of public, communal and private space, crucial to promoting sociable behaviour are clearly defined by low boundaries. The external spaces are as playable as possible with traditional dedicated play equipment, but also the public realm and communal gardens are inspiring, interesting and safe for children to play around.



LANDSCAPE STRATEGY
SECTION - FOOTWAY ALONG THE CATTLE BRIDGE AND BLOCK C



LANDSCAPE STRATEGY
BLOCKS C & D PUBLIC GREEN SPACE
CENTRAL GARDENS

A green space provides value for the new residents but also for the people of the surrounding neighbourhood for their daily commute or weekly walk. Here people can take a seat in shelter from wind, and richly planted pocket areas with play equipment for children to play and facilities for more challenging physical activities.

The route naturally leads to indoor amenities that allow activities to spill out outdoors. Play and adult supervision of play are a part of the range of the everyday activity that can occur throughout this residential area.

The north south connection is designed primarily for comfortable pedestrian and cyclist movement, but does allow for access of emergency vehicles.

