

07 SCHEDULES

HOUSING QUALITY ASSESSMENT

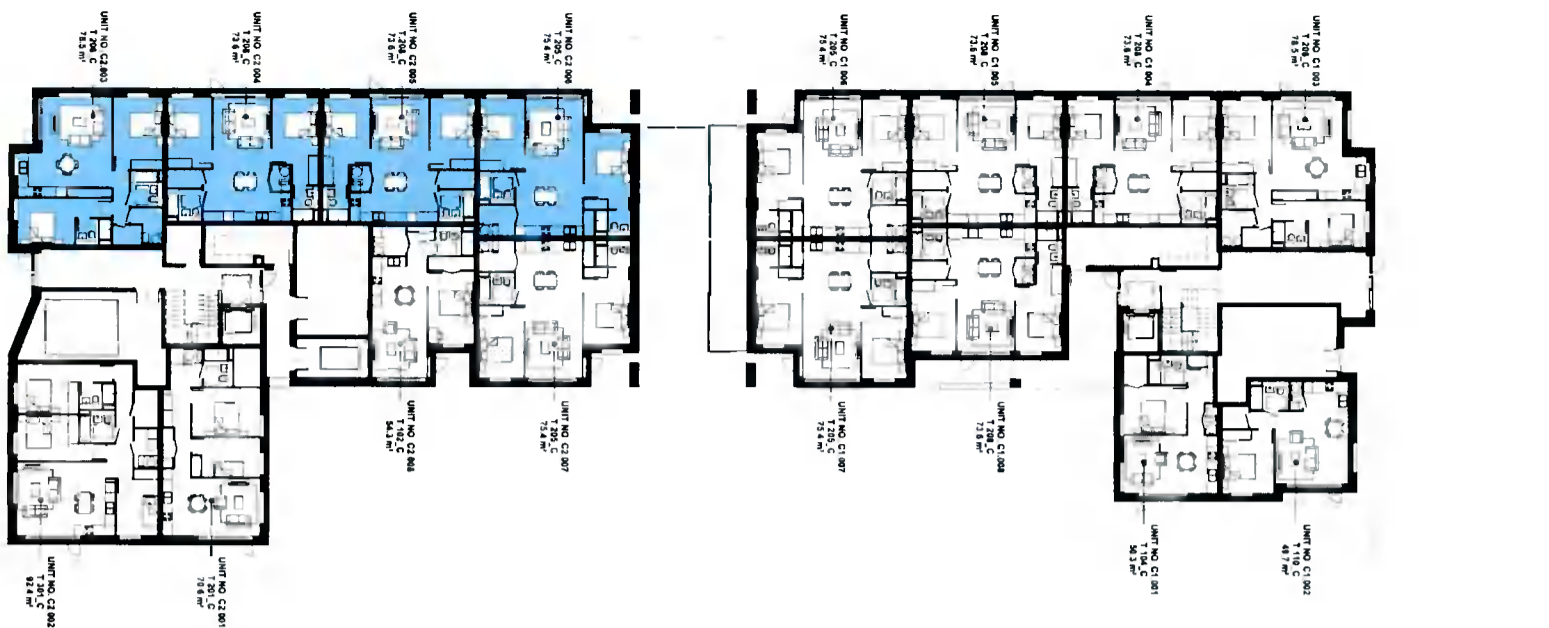
LOCATION	APARTMENT TYPE	APARTMENT AREA		Part V	ORIENTATION		LIVING/KITCHEN AREA		BEDROOM AREA		STORAGE		PRIVATE OS		COMMUNAL OS					
		Number of bedrooms	Number of bed spaces		Area Provided	Required	Dwelling Aspect	Orientation	Living/ kitchen room area provided	Living/ kitchen room area required	Aggregate bedroom area provided	Aggregate bedroom area required	Storage area provided	Storage area required	Private terrace / balconies provided	Private terrace / balconies required	Provided	Required		
D	Level 03	D3.305	T.201_D	2	3	65.7	63	69.3	NO	DUAL	N/E	30.7	28	21.7	20	5.6	5	6	6	6
D	Level 03	D3.306	T.201_D	2	3	65.7	63	69.3	NO	DUAL	S/E	30.7	28	21.7	20	5.6	5	6	6	6
D	Level 03	D3.307	T.101_C	1	2	49.5	45	49.5	YES	SINGLE	W	27.1	23	11.4	11	3.7	3	5	5	5
D	Level 03	D3.308	T.001_D	1	1	39.8	37	40.7	NO	SINGLE	W	30.8	30	0	0	3	3	4	4	4
D	Level 03	D3.309	T.210_D	2	4	80.7	73	80.3	YES	DUAL	N/S	37.3	30	25.2	24	6.1	6	7	7	7
D	Level 03	D2.301	T.102_D	1	2	49.5	45	49.5	YES	DUAL	N/W	28.2	23	11.7	11	3	3	5	5	5
D	Level 03	D2.302	T.204_D	2	4	74.3	73	80.3	NO	DUAL	N/W	31	30	25	24	6.4	6	7	7	7
D	Level 03	D2.303	T.204_C	2	4	73.6	73	80.3	NO	SINGLE	E	31.4	30	24.4	24	6	6	7	7	7
D	Level 03	D2.304	T.101_C	1	2	49.5	45	49.5	YES	SINGLE	E	27.1	23	11.4	11	3.7	3	5	5	5
D	Level 03	D2.305	T.208_D	2	4	80.3	73	80.3	YES	DUAL	S/E	36.9	30	25.2	24	6.1	6	7	7	7
D	Level 03	D2.306	T.208_D	2	4	80.3	73	80.3	YES	DUAL	S/W	36.9	30	25.2	24	6.1	6	7	7	7
D	Level 03	D2.307	T.101_C	1	2	49.5	45	49.5	YES	SINGLE	W	27.1	23	11.4	11	3.7	3	5	5	5
D	Level 03	D2.308	T.101_C	1	2	49.5	45	49.5	YES	SINGLE	W	27.1	23	11.4	11	3.7	3	5	5	5
D	Level 03	D2.309	T.103_D	1	2	50.5	45	49.5	YES	SINGLE	S	26.7	23	11.5	11	4.7	3	5	5	5
D	Level 03	D2.310	T.206_D	2	4	80.6	73	80.3	YES	DUAL	N/S	37.7	30	24.9	24	6	6	7	7	7
D	Level 04	D1.402	T.204_D	2	4	74.3	73	80.3	NO	DUAL	N/W	31	30	25	24	6.4	6	7	7	7
D	Level 04	D1.403	T.204_C	2	4	73.6	73	80.3	NO	SINGLE	W	31.4	30	24.4	24	6	6	7	7	7
D	Level 04	D1.404	T.101_C	1	2	49.5	45	49.5	YES	SINGLE	W	27.1	23	11.4	11	3.7	3	5	5	5
D	Level 04	D1.405	T.208_D	2	4	80.3	73	80.3	YES	DUAL	S/W	36.9	30	25.2	24	6.1	6	7	7	7
D	Level 04	D1.406	T.208_D	2	4	80.3	73	80.3	YES	DUAL	S/E	36.9	30	25.2	24	6.1	6	7	7	7
D	Level 04	D1.407	T.101_C	1	2	49.5	45	49.5	YES	SINGLE	E	27.1	23	11.4	11	3.7	3	5	5	5
D	Level 04	D1.408	T.101_C	1	2	49.5	45	49.5	YES	SINGLE	E	27.1	23	11.4	11	3.7	3	5	5	5
D	Level 04	D1.401	T.102_D	1	2	49.5	45	49.5	YES	DUAL	N/W	28.2	23	11.7	11	3	3	5	5	5
D	Level 04	D3.401	T.101_C	1	2	49.5	45	49.5	YES	SINGLE	S	27.1	23	11.4	11	3.7	3	5	5	5
D	Level 04	D3.402	T.205_D	2	4	76.7	73	80.3	NO	DUAL	S/E	33.6	30	24.4	24	6.1	6	7	7	7
D	Level 04	D3.403	T.204_C	2	4	73.6	73	80.3	NO	SINGLE	E	31.4	30	24.4	24	6	6	7	7	7
D	Level 04	D3.404	T.204_C	2	4	73.6	73	80.3	NO	SINGLE	E	31.4	30	24.4	24	6	6	7	7	7
D	Level 04	D3.405	T.201_D	2	3	65.7	63	69.3	NO	DUAL	N/E	30.7	28	21.7	20	5.6	5	6	6	6
D	Level 04	D3.406	T.201_D	2	3	65.7	63	69.3	NO	DUAL	S/E	30.7	28	21.7	20	5.6	5	6	6	6
D	Level 04	D3.407	T.101_C	1	2	49.5	45	49.5	YES	SINGLE	W	27.1	23	11.4	11	3.7	3	5	5	5
D	Level 04	D3.408	T.001_D	1	1	39.8	37	40.7	NO	SINGLE	W	30.8	30	0	0	3	3	4	4	4
D	Level 04	D2.401	T.102_D	1	2	49.5	45	49.5	YES	DUAL	N/W	28.2	23	11.7	11	3	3	5	5	5
D	Level 04	D2.402	T.204_D	2	4	74.3	73	80.3	NO	DUAL	N/W	31	30	25	24	6.4	6	7	7	7
D	Level 04	D2.403	T.204_C	2	4	73.6	73	80.3	NO	SINGLE	E	31.4	30	24.4	24	6	6	7	7	7
D	Level 04	D2.404	T.101_C	1	2	49.5	45	49.5	YES	SINGLE	E	27.1	23	11.4	11	3.7	3	5	5	5
D	Level 04	D2.405	T.208_D	2	4	80.3	73	80.3	YES	DUAL	S/E	36.9	30	25.2	24	6.1	6	7	7	7
D	Level 04	D2.406	T.208_D	2	4	80.3	73	80.3	YES	DUAL	S/W	36.9	30	25.2	24	6.1	6	7	7	7
D	Level 04	D2.407	T.101_C	1	2	49.5	45	49.5	YES	SINGLE	W	27.1	23	11.4	11	3.7	3	5	5	5
D	Level 04	D2.408	T.101_C	1	2	49.5	45	49.5	YES	SINGLE	W	27.1	23	11.4	11	3.7	3	5	5	5

07 SCHEDULES
HOUSING QUALITY ASSESSMENT

LOCATION	Unit No.	APARTMENT TYPE		APARTMENT AREA			Part V	ORIENTATION		LIVING/KITCHEN AREA		BEDROOM AREA		STORAGE		PRIVATE OS		COMMUNAL OS	
		Number of bedrooms	Number of bed spaces	Area Provided	Reqd + 10%	Unit over 10%		Dwelling Aspect	Orientation	Living/ Kitchen area provided m2	Living/ Kitchen room area required m2	Aggregate bedroom area provided m2	Aggregate bedroom area required m2	Storage area provided m2	Storage area required m2	Private terrace/ balconies provided m2	Private terrace/ balconies required	Provided	Required
D	D1.204	1	2	49.5	45	49.5 YES		SINGLE	W	27.1	23	11.4	11	3.7	3	5	5	5	
D	D1.205	2	4	80.3	73	80.3 YES		DUAL	S/W	36.9	30	25.2	24	6.1	6	7	7	7	
D	D1.206	2	4	80.3	73	80.3 YES		DUAL	S/E	36.9	30	25.2	24	6.1	6	7	7	7	
D	D1.207	1	2	49.5	45	49.5 YES		SINGLE	E	27.1	23	11.4	11	3.7	3	5	5	5	
D	D1.208	1	2	49.5	45	49.5 YES		SINGLE	E	27.1	23	11.4	11	3.7	3	5	5	5	
D	D1.209	1	2	50.5	45	49.5 YES		SINGLE	S	26.7	23	11.5	11	4.7	3	5	5	5	
D	D1.210	2	4	80.6	73	80.3 YES		DUAL	N/S	37.7	30	24.9	24	6	6	7	7	7	
D	D4.203	1	2	49.5	45	49.5 YES		SINGLE	S	27.1	23	11.4	11	3.7	3	5	5	5	
D	D4.204	1	2	49.5	45	49.5 YES		SINGLE	S	27.1	23	11.4	11	3.7	3	5	5	5	
D	D4.205	1	2	49.5	45	49.5 YES		SINGLE	S	27.1	23	11.4	11	3.7	3	5	5	5	
D	D1.201	1	2	49.5	45	49.5 YES		DUAL	N/W	28.2	23	11.7	11	3	3	5	5	5	
D	D4.201	2	4	74	73	80.3 NO		DUAL	N/W	30.9	30	24.6	24	6.7	6	7	7	7	
D	D4.202	2	4	78.9	73	80.3 NO		DUAL	S/W	35.6	30	24.8	24	6.1	6	7	7	7	
D	D4.206	2	4	78.8	73	80.3 NO		DUAL	N/S	35.6	30	25.1	24	6.2	6	7	7	7	
D	D4.207	1	2	48	45	49.5 NO		SINGLE	N	26.8	23	11.4	11	3	3	5	5	5	
D	D4.208	1	2	49.5	45	49.5 YES		SINGLE	N	27.1	23	11.4	11	3.7	3	5	5	5	
D	D3.201	1	2	49.5	45	49.5 YES		SINGLE	S	27.1	23	11.4	11	3.7	3	5	5	5	
D	D3.202	2	4	76.7	73	80.3 NO		DUAL	S/E	33.6	30	24.4	24	6.1	6	7	7	7	
D	D3.203	2	4	73.6	73	80.3 NO		SINGLE	E	31.4	30	24.4	24	6	6	7	7	7	
D	D3.204	2	4	73.6	73	80.3 NO		SINGLE	E	31.4	30	24.4	24	6	6	7	7	7	
D	D3.205	2	3	65.7	63	69.3 NO		DUAL	N/E	30.7	28	21.7	20	5.6	5	6	6	6	
D	D3.206	2	3	65.7	63	69.3 NO		DUAL	S/E	30.7	28	21.7	20	5.6	5	6	6	6	
D	D3.207	1	2	49.5	45	49.5 YES		SINGLE	W	27.1	23	11.4	11	3.7	3	5	5	5	
D	D3.208	1	1	39.8	37	40.7 NO		SINGLE	W	30.8	30	0	0	3	3	4	4	4	
D	D3.209	2	4	80.7	73	80.3 YES		DUAL	N/S	37.3	30	25.2	24	6.1	6	7	7	7	
D	D2.201	1	2	49.5	45	49.5 YES		DUAL	N/W	28.2	23	11.7	11	3	3	5	5	5	
D	D2.202	2	4	74.3	73	80.3 NO		DUAL	N/W	31	30	25	24	6.4	6	7	7	7	
D	D2.203	2	4	73.6	73	80.3 NO		SINGLE	E	31.4	30	24.4	24	6	6	7	7	7	
D	D2.204	1	2	49.5	45	49.5 YES		SINGLE	E	27.1	23	11.4	11	3.7	3	5	5	5	
D	D2.205	2	4	80.3	73	80.3 YES		DUAL	S/E	36.9	30	25.2	24	6.1	6	7	7	7	
D	D2.206	2	4	80.3	73	80.3 YES		DUAL	S/W	36.9	30	25.2	24	6.1	6	7	7	7	
D	D2.207	1	2	49.5	45	49.5 YES		SINGLE	W	27.1	23	11.4	11	3.7	3	5	5	5	
D	D2.208	1	2	49.5	45	49.5 YES		SINGLE	W	27.1	23	11.4	11	3.7	3	5	5	5	
D	D2.209	1	2	50.5	45	49.5 YES		SINGLE	S	26.7	23	11.5	11	4.7	3	5	5	5	
D	D2.210	2	4	80.6	73	80.3 YES		DUAL	N/S	37.7	30	24.9	24	6	6	7	7	7	
D	D1.302	2	4	74.3	73	80.3 NO		DUAL	N/W	31	30	25	24	6.4	6	7	7	7	
D	D1.303	2	4	73.6	73	80.3 NO		SINGLE	W	31.4	30	24.4	24	6	6	7	7	7	
D	D1.304	1	2	49.5	45	49.5 YES		SINGLE	W	27.1	23	11.4	11	3.7	3	5	5	5	
D	D1.305	2	4	80.3	73	80.3 YES		DUAL	S/W	36.9	30	25.2	24	6.1	6	7	7	7	
D	D1.306	2	4	80.3	73	80.3 YES		DUAL	S/E	36.9	30	25.2	24	6.1	6	7	7	7	
D	D1.307	1	2	49.5	45	49.5 YES		SINGLE	E	27.1	23	11.4	11	3.7	3	5	5	5	
D	D1.308	1	2	49.5	45	49.5 YES		SINGLE	E	27.1	23	11.4	11	3.7	3	5	5	5	
D	D4.303	1	2	49.5	45	49.5 YES		SINGLE	S	27.1	23	11.4	11	3.7	3	5	5	5	
D	D4.304	1	2	49.5	45	49.5 YES		SINGLE	S	27.1	23	11.4	11	3.7	3	5	5	5	
D	D4.305	1	2	49.5	45	49.5 YES		SINGLE	S	27.1	23	11.4	11	3.7	3	5	5	5	
D	D1.301	1	2	49.5	45	49.5 YES		DUAL	N/W	28.2	23	11.7	11	3	3	5	5	5	
D	D1.309	1	2	50.5	45	49.5 YES		SINGLE	S	26.7	23	11.5	11	4.7	3	5	5	5	
D	D1.310	2	4	80.6	73	80.3 YES		DUAL	N/S	37.7	30	24.9	24	6	6	7	7	7	
D	D4.301	2	4	74	73	80.3 NO		DUAL	N/W	30.9	30	24.6	24	6.7	6	7	7	7	
D	D4.302	2	4	78.9	73	80.3 NO		DUAL	S/W	35.6	30	24.8	24	6.1	6	7	7	7	
D	D4.306	2	4	78.8	73	80.3 NO		DUAL	N/S	35.6	30	25.1	24	6.2	6	7	7	7	
D	D4.307	1	2	48	45	49.5 NO		SINGLE	N	26.8	23	11.4	11	3	3	5	5	5	
D	D4.308	1	2	49.5	45	49.5 YES		SINGLE	N	27.1	23	11.4	11	3.7	3	5	5	5	
D	D3.301	1	2	49.5	45	49.5 YES		SINGLE	S	27.1	23	11.4	11	3.7	3	5	5	5	
D	D3.302	2	4	76.7	73	80.3 NO		DUAL	S/E	33.6	30	24.4	24	6.1	6	7	7	7	
D	D3.303	2	4	73.6	73	80.3 NO		SINGLE	E	31.4	30	24.4	24	6	6	7	7	7	
D	D3.304	2	4	73.6	73	80.3 NO		SINGLE	E	31.4	30	24.4	24	6	6	7	7	7	

07 SCHEDULES

7.3 PROPOSED PART V SCHEDULE



1 LEVEL 00 C
1:200



2 LEVEL 01 C
1:200



3 LEVEL 02 C
1:200



4 LEVEL 03 C
1:200



5 LEVEL 04 C
1:200

Legend:
Proposed Part V Allocation

Proposed Part V Schedule of units											
Block	Level	Unit Number	Unit Type	No. of Bedrooms	Apartment Area	Request Area	\$4 Apt. Disposal	\$4 Apartment Orientation			
C	Level 00	C2 803	T 208 C	2	78.5	73.0	Yes	SW			
C	Level 00	C2 804	T 208 C	2	75.4	73.0	Yes	W			
C	Level 00	C2 804	T 208 C	2	73.6	73.0	Yes	W			
C	Level 00	C2 805	T 208 C	2	73.6	73.0	Yes	W			
C	Level 01	C2 104	T 201 C	2	75.8	73.0	Yes	SW			
C	Level 01	C2 102	T 201 C	3	92.4	90.0	Yes	SE			
C	Level 01	C2 101	T 201 C	2	70.6	63.0	Yes	NE			
C	Level 01	C2 110	T 101 C	1	48.5	45.0	Yes	E			
C	Level 01	C2 107	T 201 C	2	73.3	73.0	Yes	W			
C	Level 01	C2 106	T 201 C	2	73.3	73.0	Yes	E			
C	Level 01	C2 111	T 101 A	1	49.0	45.0	Yes	S			
C	Level 01	C2 105	T 208 C	2	73.6	73.0	Yes	W			
C	Level 01	C2 108	T 208 C	2	73.6	73.0	Yes	W			
C	Level 02	C2 204	T 201 C	2	73.8	73.0	Yes	SW			
C	Level 02	C2 202	T 201 C	3	92.4	90.0	Yes	SE			
C	Level 02	C2 201	T 201 C	2	70.6	63.0	Yes	NE			
C	Level 02	C2 210	T 101 C	1	48.5	45.0	Yes	E			
C	Level 02	C2 209	T 101 C	1	49.5	45.0	Yes	S			
C	Level 02	C2 203	T 101 A	1	50.0	45.0	Yes	W			
C	Level 02	C2 207	T 201 C	2	73.3	73.0	Yes	W			
C	Level 02	C2 208	T 201 C	2	73.3	73.0	Yes	E			
C	Level 02	C2 206	T 208 C	2	73.6	73.0	Yes	W			
C	Level 02	C2 205	T 208 C	2	73.6	73.0	Yes	SW			
C	Level 03	C2 301	T 101 C	1	49.5	45.0	Yes	E			
C	Level 03	C2 302	T 101 C	1	49.5	45.0	Yes	E			
C	Level 03	C2 303	T 101 C	2	73.3	73.0	Yes	E			
C	Level 03	C2 307	T 201 C	2	73.3	73.0	Yes	E			
C	Level 03	C2 308	T 201 C	2	73.3	73.0	Yes	E			
C	Level 03	C2 309	T 201 C	2	73.3	73.0	Yes	E			
C	Level 03	C2 306	T 101 A	1	49.5	45.0	Yes	S			
C	Level 03	C2 305	T 208 C	2	73.8	73.0	Yes	W			
C	Level 03	C2 304	T 208 C	2	73.8	73.0	Yes	SW			
C	Level 04	C2 401	T 101 C	1	49.0	45.0	Yes	E			
C	Level 04	C2 410	T 101 C	1	48.5	45.0	Yes	NE			
C	Level 04	C2 409	T 101 C	2	73.3	73.0	Yes	E			
C	Level 04	C2 408	T 101 C	2	73.3	73.0	Yes	E			
C	Level 04	C2 407	T 101 A	1	49.5	45.0	Yes	S			
C	Level 04	C2 406	T 208 C	2	73.6	73.0	Yes	SE			
C	Level 04	C2 405	T 208 C	2	73.6	73.0	Yes	W			
Grand Total \$4 2977.9											

07 SCHEDULES

7.2 SCHEDULE OF ACCOMMODATION BY BLOCK

Apts	Type	Count	Mix	Apt area (average)	Total Area (nett)	Total area (gross)	N:C
A	Studio						
	1B	70	49%	50	3491		
	2B (3P)						
	2B (4P)	67	47%	76	5078		
	3B	6	4%	93	560		
	Residential				9128	11083	82.4%
	Amenities				162	162	
C	Plant					421	
	Ancillary / waste stores					156	
	Total	143	100%	65	9290	11821	78.6%
	Studio						
	1B	60	48%	50	2996		
	2B (3P)	5	4%	69	346		
	2B (4P)	55	44%	74	4087		
D	3B	4	3%	92	370		
	Residential				7798	9546	81.7%
	Amenities						
	Plant					102	
	Ancillary / waste stores					33	
	Total	124	100%	63	7798	9680	80.6%
	Studio						
1B	9	5%	39	355			
1B	74	44%	50	3678			
2B (3P)	11	7%	67	734			
2B (4P)	75	44%	78	5818			
3B							
Residential				10585	12568	84.2%	
Amenities							
Plant					149		
Ancillary / waste stores					40		
Total	169	100%	63	10585	12757	83.0%	

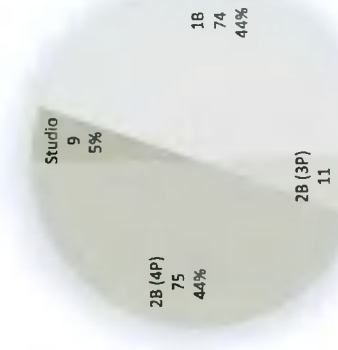
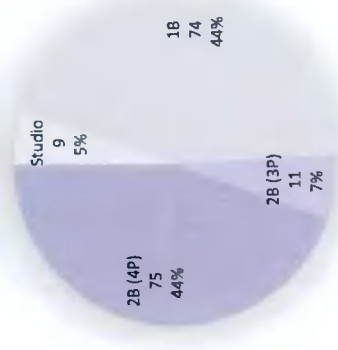
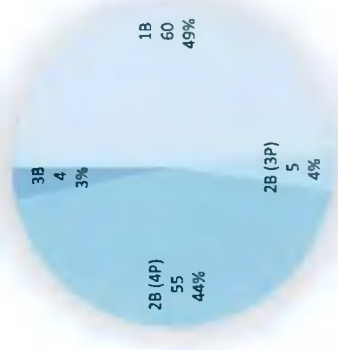
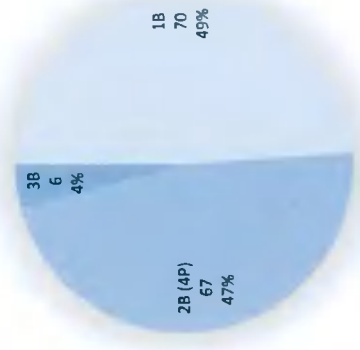
SUMMARY (excludes pavillion)

Type	Count	Mix	Apt area (average)	Total Area (nett)	Total area (gross)	N:C
Studio	9	2%	39	355		
1B	204	47%	50	10164		
2B (3P)	16	4%	67	1080		
2B (4P)	197	45%	76	14983		
3B	10	2%	93	929		
Residential				27511	33197	82.9%
Amenities (*)	-			162	162	
Ancillary (*)					229	
Plant (*)					672	
Total	436	100%	63	27673	34259	80.8%

(*) Amenities considered 100% Nett

Plant & ancillary accommodation within building footprint included in GIFA

Plant & ancillary located on outbuildings and/or rooftop excluded from GIFA



07 SCHEDULES

7.1 SUMMARY SCHEDULE & INDICATORS

SUMMARY OF AREAS			
Blocks A, C & D	Nett	Gross	N/G
RESIDENTIAL NETT	sqm 27,511		
RESIDENTIAL GROSS	sqm	33,197	83%
Resident Amenities	sqm 162	162	
Ancillary & waste stores	sqm 229	229	
Plant	sqm 672	672	
Subtotal GFA blocks A, C & D	sqm 27,673	34,259	81%

ANCILLARY BUILDINGS			
Resident's Pavillion	Nett	Gross	
Pavillion Building (*)	sqm 336	480	
Subtotal blocks A, C & D + pavillion	28,009	34,739	
(*) excludes bicycle parking			
Carpark	sqm 2,332	2,332	
Bicycle parking (incl. pavillion)	sqm 331	331	
TOTAL (incl. Carpark)	37,402	37,402	

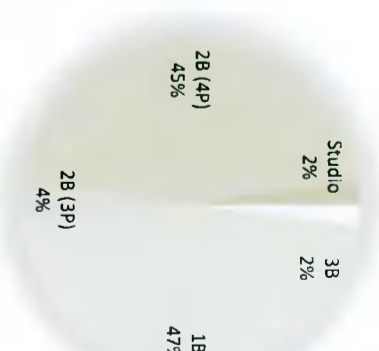
INDICATORS			
GIA	Site area		
PLOT RATIO 34,739	/	24,265	= 1.43
DENSITY 436	/	2.43	= 180 (un/Ha.)

CARPARKING (*)					
	Podium	On street	MSCP	Subtotal	Ratio
Block A	56	16		72	50.3%
Block C	32	30		62	50.0%
Block D	12	72		84	49.7%
Visitor		2		2	0.9%
Total	88	60	72	220	50.5%

(*) Disabled carpark allocation 5% / Electric vehicle provision 10%, included in totals

BICYCLE PARKING					
Requirement: 1 per 1 Residents:	436	Visitors@20%:	90	526	
PROVIDED SPACES	Stacked	Sheffield	Subtotal	Ratio	
Block A	144		144	100.7%	
Block C	124		124	100.0%	
Block D	148	22	170	100.6%	
Visitor		88	88	20.2%	
Total	416	110	526	120.6%	

UNIT MIX					
	Blk A	Blk C	Blk D	Total	%
Studio	-	-	9	9	2%
1B	70	60	74	204	47%
2B (3P)	-	5	11	16	4%
2B (4P)	67	55	75	197	45%
3B	6	4	-	10	2%
Total	143	124	169	436	



Dual Aspect Provision					
	Total	Single	Dual		%
Studio	9	5	4		1%
1B	204	134	70		16%
2B (3P)	16	1	15		3%
2B (4P)	197	78	119		27%
3B	10	0	10		2%
Total	436	218	218		50%



Oversized units (+10%)						
	Total	Avg area	Area	Min.	+10%	%
Studio	9	39.5	355	9	0	0%
1B	204	49.8	10,164	15	189	43%
2B (3P)	16	67.5	1,080	11	5	1%
2B (4P)	197	76.1	14,983	158	39	9%
3B	10	92.9	929	10	0	0%
Total	436	63.1	27,511	203	233	53%



OPEN SPACE (*)			
	Private Open Space (**)	Communal Amenity Open Space	Public Open Space
OS1	sqm. 4,453	sqm. 3,281	sqm. 3,138
OS2	sqm. 2,621	sqm. 2,621	-
OS3	sqm. -	sqm. -	sqm. -

(*) Refer to Camilins landscape architect drawings

(**) includes private open space on level 0 & level 1 and balconies