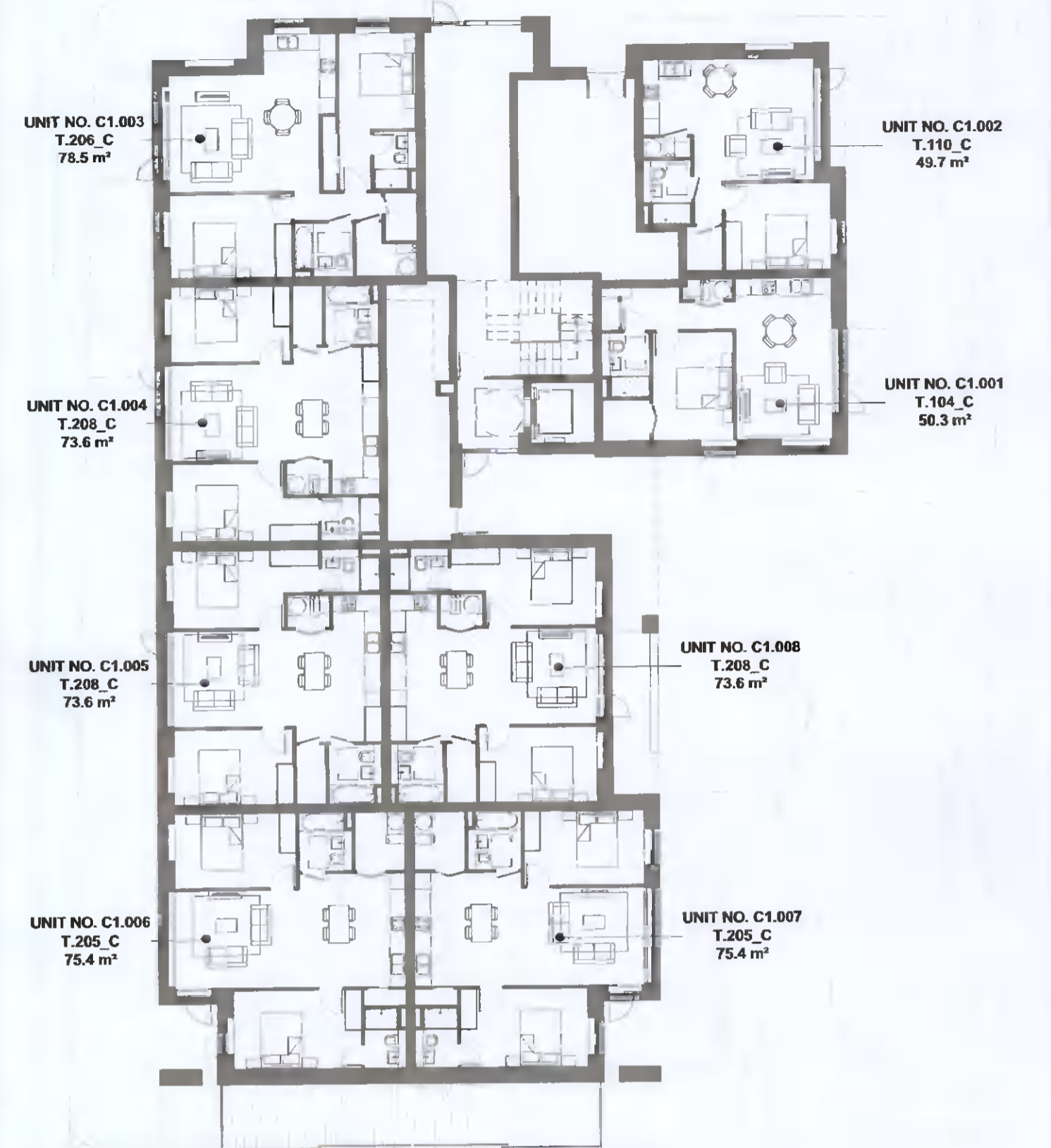


Legend:

Proposed Part V Allocation

Proposed Part V Schedule of units

Block	Level	Unit Number	Unit Type	No. of Bedrooms	Apartment Area	Required Area	S4_Apt_DualAspect	S4_Apartment Orientation
C	Level 00	C2.003	T.206_C	2	78.5	73.0		SW
C	Level 00	C2.006	T.205_C	2	73.4	73.0		W
C	Level 00	C2.004	T.208_C	2	73.6	73.0		W
C	Level 00	C2.005	T.208_C	2	73.6	73.0		W
C	Level 01	C2.104	T.203_C	2	75.8	73.0	Yes	SW
C	Level 01	C2.102	T.301_C	3	92.4	90.0	Yes	S/E
C	Level 01	C2.101	T.201_C	2	70.6	63.0	Yes	N/E
C	Level 01	C2.110	T.101_C	1	49.5	45.0		E
C	Level 01	C2.107	T.207_C	2	73.3	73.0		E
C	Level 01	C2.108	T.207_C	2	73.3	73.0		E
C	Level 01	C2.109	T.101_C	1	49.5	45.0		E
C	Level 01	C2.103	T.101_A	1	50.0	45.0		S
C	Level 01	C2.106	T.204_C	2	73.6	73.0		W
C	Level 01	C2.105	T.204_C	2	73.6	73.0		W
C	Level 02	C2.204	T.203_C	2	75.8	73.0	Yes	SW
C	Level 02	C2.202	T.301_C	3	92.4	90.0	Yes	S/E
C	Level 02	C2.201	T.201_C	2	70.6	63.0	Yes	N/E
C	Level 02	C2.210	T.101_C	1	49.5	45.0		E
C	Level 02	C2.209	T.101_C	1	49.5	45.0		E
C	Level 02	C2.203	T.101_A	1	50.0	45.0		S
C	Level 02	C2.207	T.207_C	2	73.3	73.0		W
C	Level 02	C2.226	T.207_C	2	73.3	73.0		E
C	Level 02	C2.206	T.204_C	2	73.6	73.0		W
C	Level 02	C2.205	T.204_C	2	73.6	73.0		W
C	Level 03	C2.304	T.203_C	2	75.8	73.0	Yes	SW
C	Level 03	C2.302	T.301_C	3	92.4	90.0	Yes	S/E
C	Level 03	C2.301	T.201_C	2	70.6	63.0	Yes	N/E
C	Level 03	C2.310	T.101_C	1	49.5	45.0		E
C	Level 03	C2.307	T.207_C	2	73.3	73.0		W
C	Level 03	C2.308	T.207_C	2	73.3	73.0		E
C	Level 03	C2.309	T.101_C	1	49.5	45.0		E
C	Level 03	C2.303	T.101_A	1	50.0	45.0	Yes	S
C	Level 03	C2.306	T.204_C	2	73.6	73.0		W
C	Level 03	C2.305	T.204_C	2	73.6	73.0		W
C	Level 04	C2.404	T.203_C	2	75.8	73.0	Yes	SW
C	Level 04	C2.401	T.107_C	1	50.0	45.0	Yes	N/E
C	Level 04	C2.410	T.101_C	1	49.5	45.0		E
C	Level 04	C2.407	T.207_C	2	73.3	73.0		W
C	Level 04	C2.408	T.207_C	2	73.3	73.0		E
C	Level 04	C2.409	T.101_C	1	49.5	45.0		E
C	Level 04	C2.403	T.101_A	1	50.0	45.0		S
C	Level 04	C2.402	T.202_C	2	63.2	63.0	Yes	S/E
C	Level 04	C2.406	T.204_C	2	73.6	73.0		W
C	Level 04	C2.405	T.204_C	2	73.6	73.0		W
Grand total: 44					2977.9			



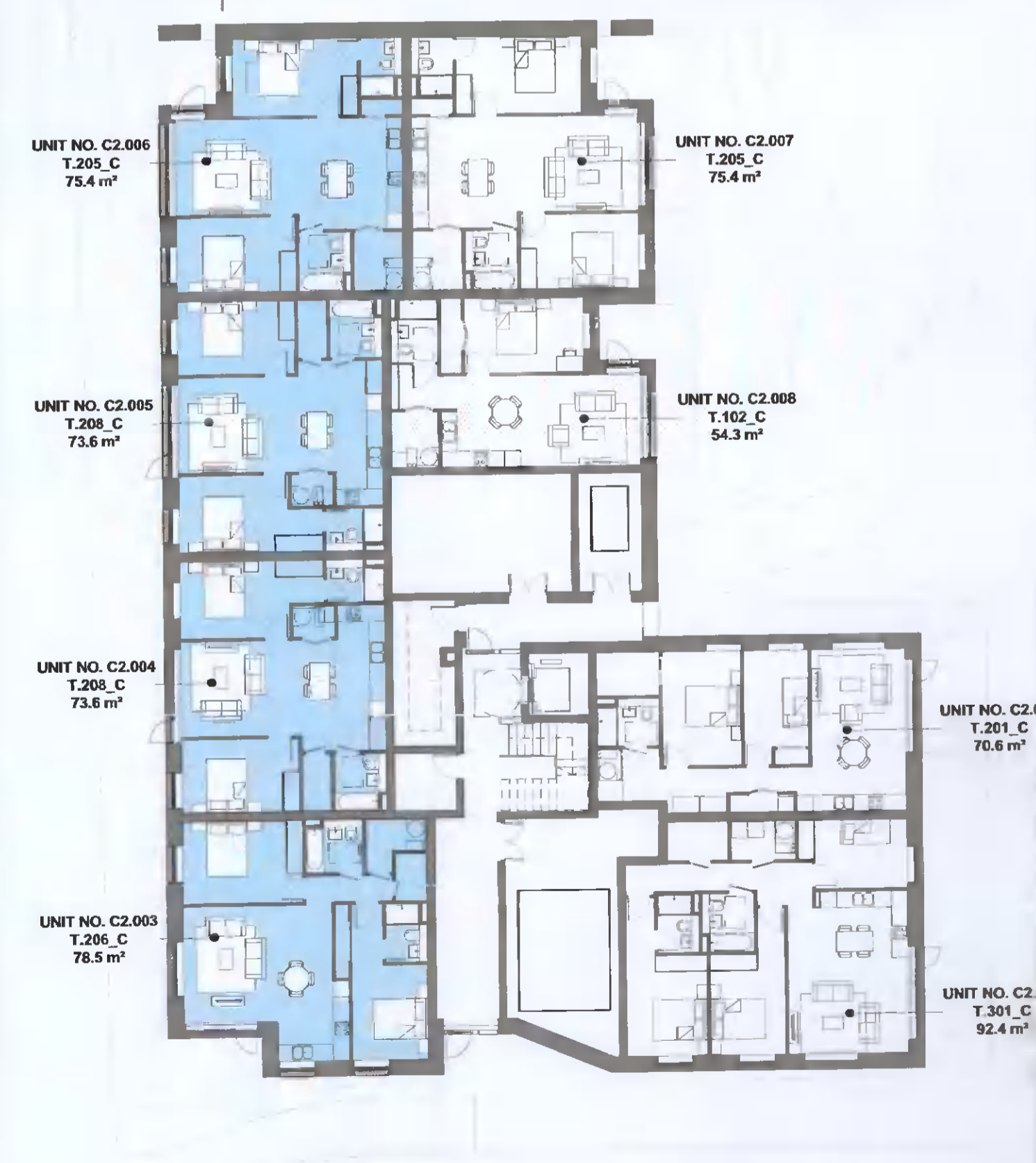
1 LEVEL 00 C
1:200



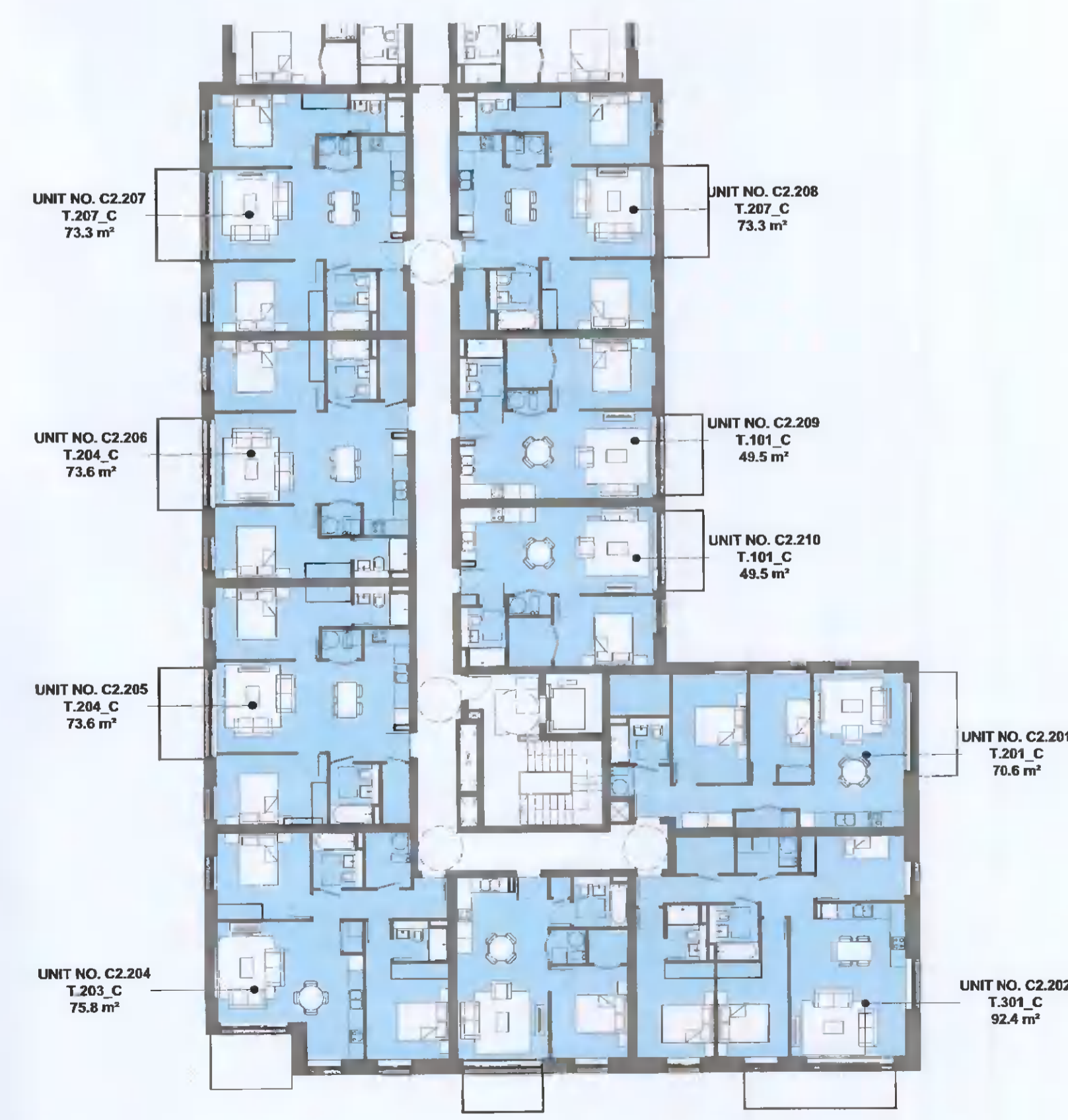
2 LEVEL 01 C
1:200



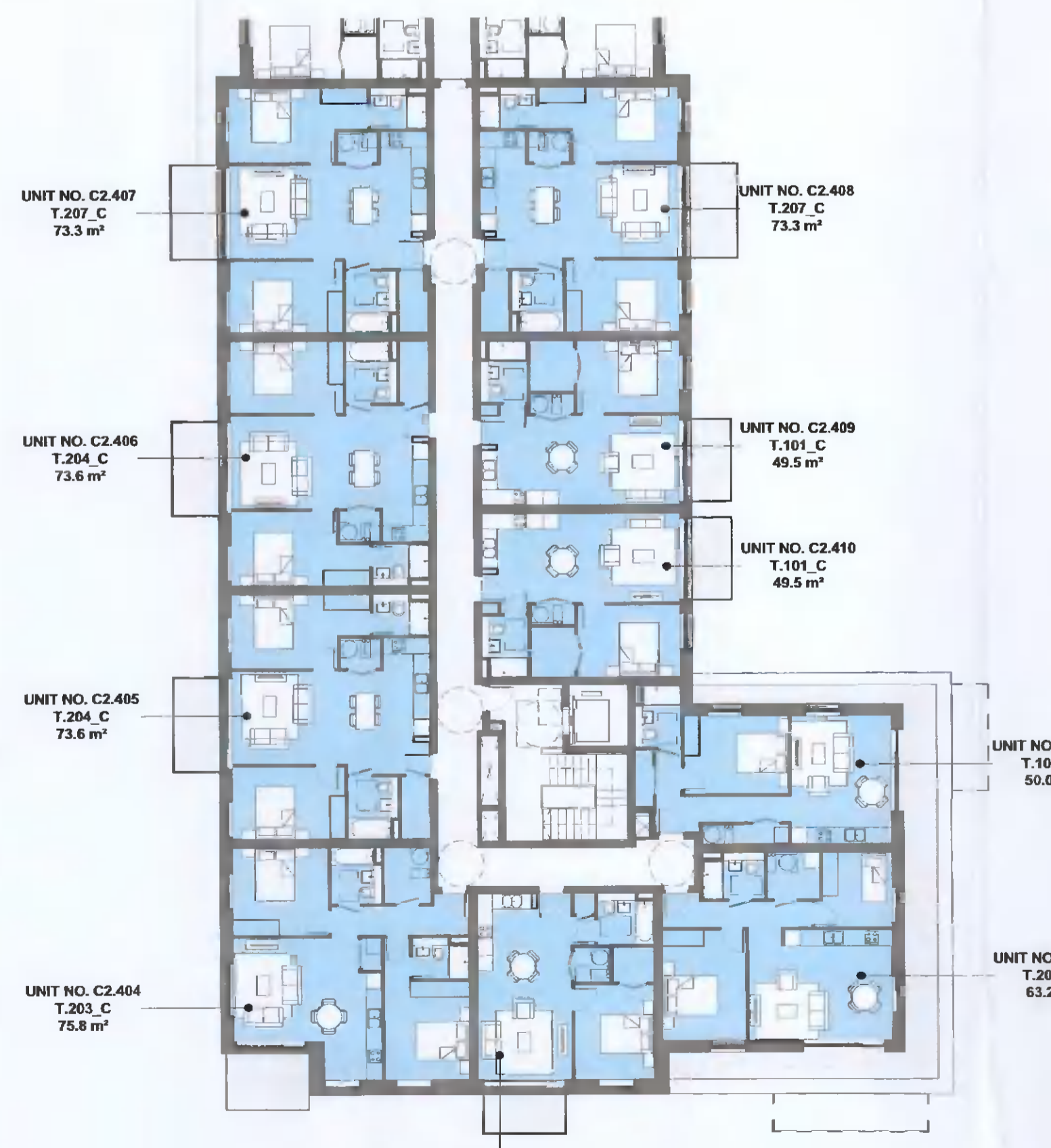
4 LEVEL 03 C
1:200



1 LEVEL 00 C
1:200



3 LEVEL 02 C
1:200



5 LEVEL 04 C
1:200

REV	DATE	DESCRIPTION	CHK	DRN
P01	08/04/2022	ISSUED FOR PLANNING	RJ	FM

STATUS CODE DESCRIPTION
ISSUED FOR PLANNING APPROVAL

CLIENT
QUINTAIN IRELAND LTD.

PROJECT
ADAMSTOWN STATION BLOCKS ACD

DRAWING
**PROPOSED PART V ALLOCATION
 BLOCK C**

PROJECT NUMBER: 950747 DATE: 08/04/22

SCALE@ A1: As indicated DRAWN/CHECKED: FM/RJ

STATUS CODE: A1 DRAWING NUMBER: ADC3-HJL-ACD-ZZ-DR-A-P9001 REVISION: P01

Henry J Lyons

Architecture • Interiors henryjlyons.com +353 1 888 3333 info@henryjlyons.com 51-54 Pearse Street Dublin D02 KA66