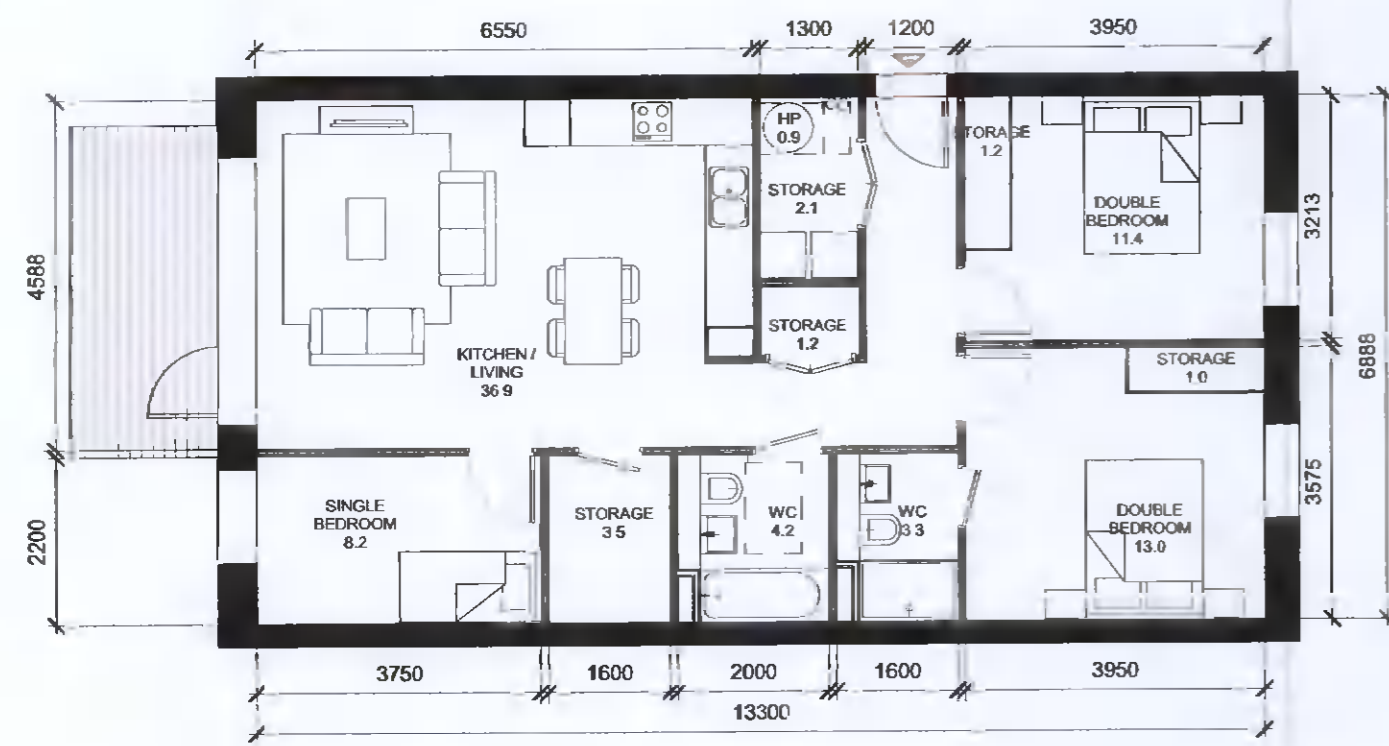
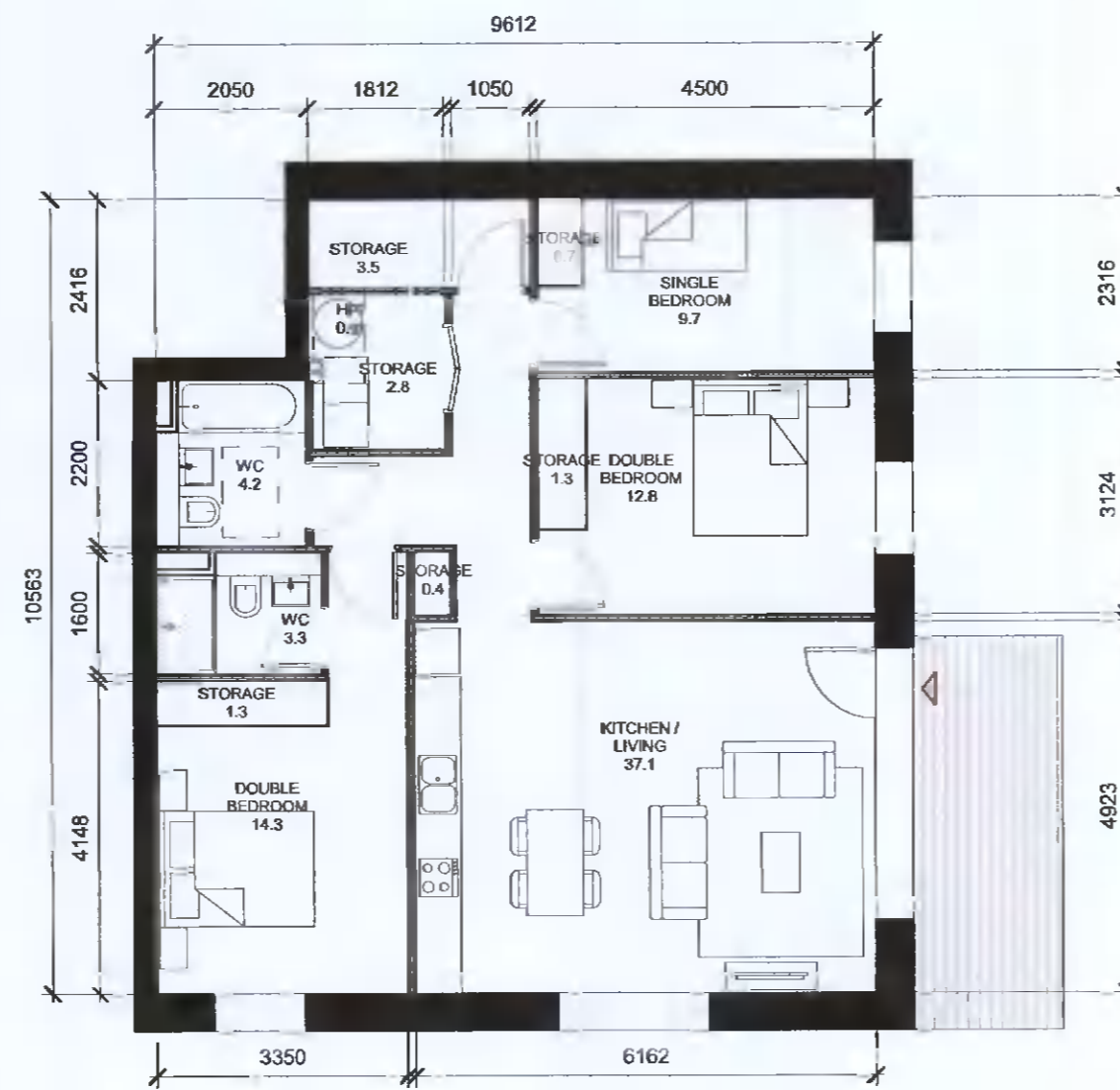


APARTMENT TYPES 3B					
Count	APARTMENT TYPE		LOCATION	APARTMENT AREA	
	Unit Type	Type Name	Block	Area sqm	Min. Area
4	3B	T.301_A	A	91.6	90.0
4	3B	T.301_C	C	92.4	90.0
2	3B	T.302_A	A	96.6	90.0
3B: 10					
Grand total: 10					



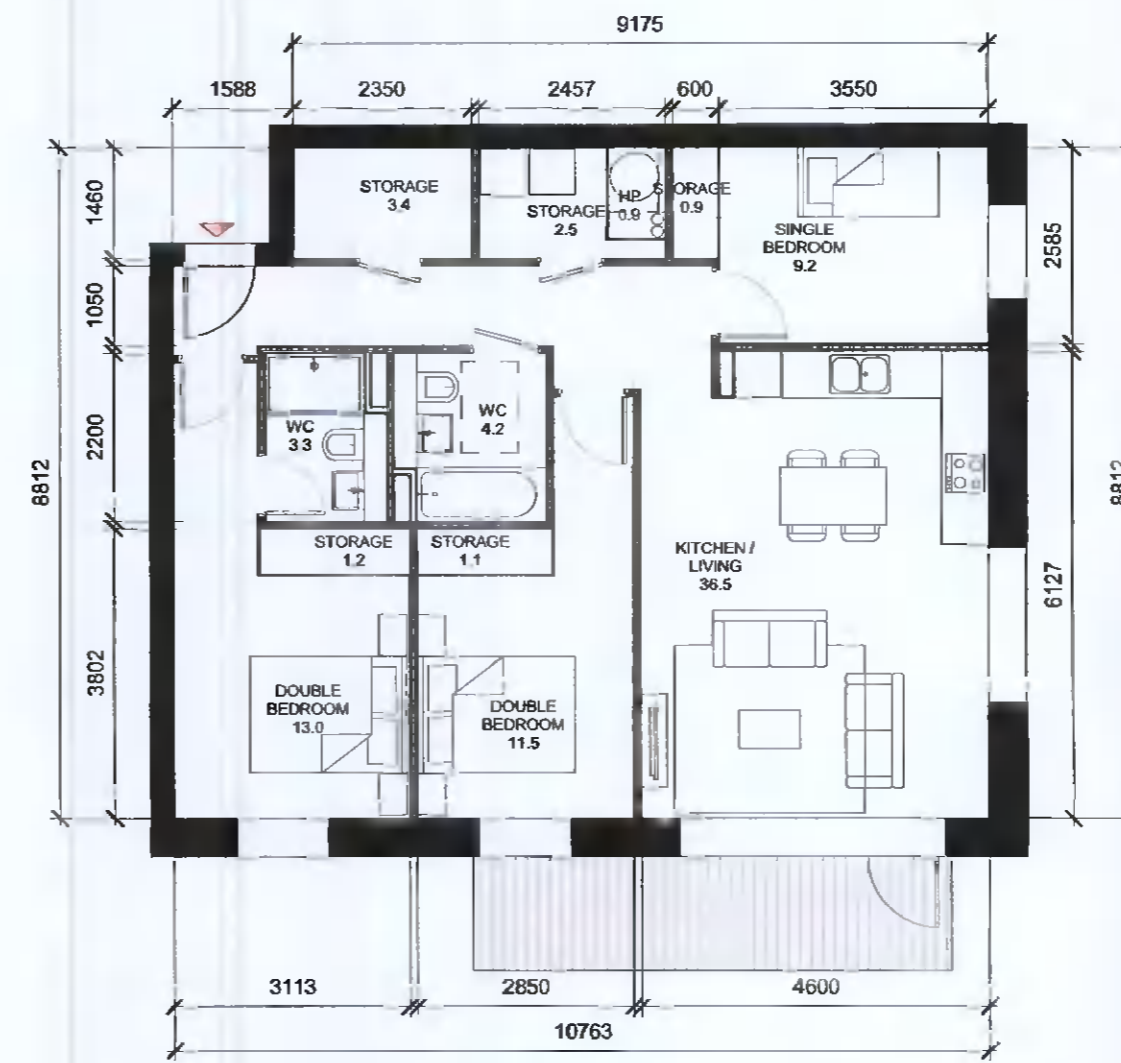
1 T.301_A
1 : 100

T.301_A SPACE REQUIREMENTS												
Apartment Area	Required Apartment Area	Required Area Met	Kitchen - Living Area	Required Kitchen - Living Area	Required Area Met	Total Bedroom Area	Required Total Bedroom Area	Required Area Met	Total Storage Area	Required Total Storage Area	Heat Pump Area	
91.6 m ²	90.0 m ²	Yes	36.9 m ²	34.0 m ²	Yes	32.8 m ²	31.5 m ²	Yes	9.0 m ²	9.0 m ²	Yes	0.9 m ²



2 T.302_A
1 : 100

T.302_A SPACE REQUIREMENTS												
Apartment Area	Required Apartment Area	Required Area Met	Kitchen - Living Area	Required Kitchen - Living Area	Required Area Met	Total Bedroom Area	Required Total Bedroom Area	Required Area Met	Total Storage Area	Required Total Storage Area	Heat Pump Area	
96.6 m ²	90.0 m ²	Yes	37.1 m ²	34.0 m ²	Yes	36.6 m ²	31.5 m ²	Yes	10.0 m ²	9.0 m ²	Yes	0.9 m ²



3 T.301_C
1 : 100

T.301_C SPACE REQUIREMENTS												
Apartment Area	Required Apartment Area	Required Area Met	Kitchen - Living Area	Required Kitchen - Living Area	Required Area Met	Total Bedroom Area	Required Total Bedroom Area	Required Area Met	Total Storage Area	Required Total Storage Area	Heat Pump Area	
92.4 m ²	90.0 m ²	Yes	36.5 m ²	34.0 m ²	Yes	33.7 m ²	31.5 m ²	Yes	9.1 m ²	9.0 m ²	Yes	0.9 m ²

REV	DATE	DESCRIPTION	BY	CHK	DRN
P01	08/04/2022	ISSUED FOR PLANNING	RJ	FM	
			CKH		DRN

STATUS CODE DESCRIPTION
ISSUED FOR PLANNING APPROVAL

CLIENT
QUINTAIN IRELAND LTD.

PROJECT
ADAMSTOWN STATION BLOCKS ACD

DRAWING
**APARTMENT TYPES Sheet 6
 3B Apartments**

PROJECT NUMBER: 950747
 DATE: 08/04/22

SCALE@A1: 1 : 100
 DRAWN/CHECKED: FM/RJ

STATUS CODE: DRAWING NUMBER: A1
 DESCRIPTION: ADC3-HUL-ACD-ZZ-DR-A-P8006
 REVISION: P01

Henry J Lyons

Architecture + Interiors
 henryjlyons.com
 +353 1 888 3333
 info@henryjlyons.com
 51-54 Pearse Street
 Dublin D02 K466