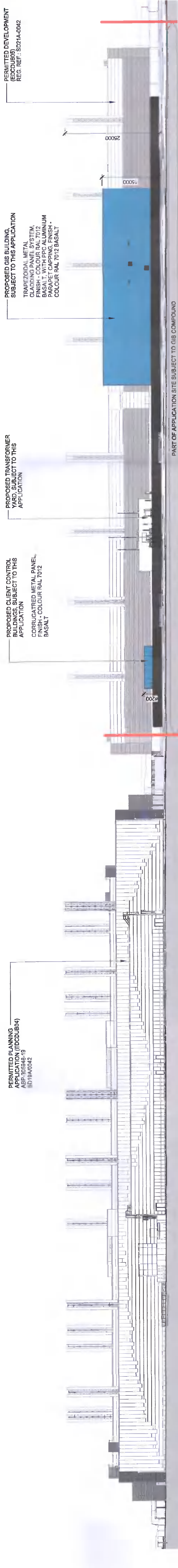
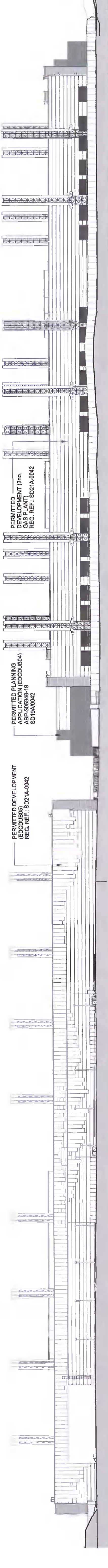


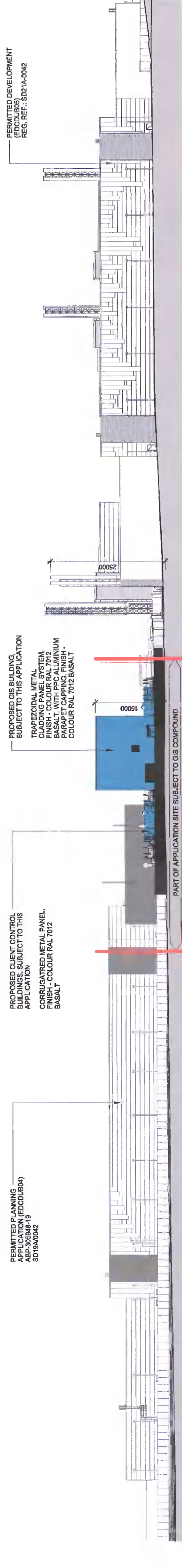
KEYPLAN
INTERNAL SITE ELEVATIONS



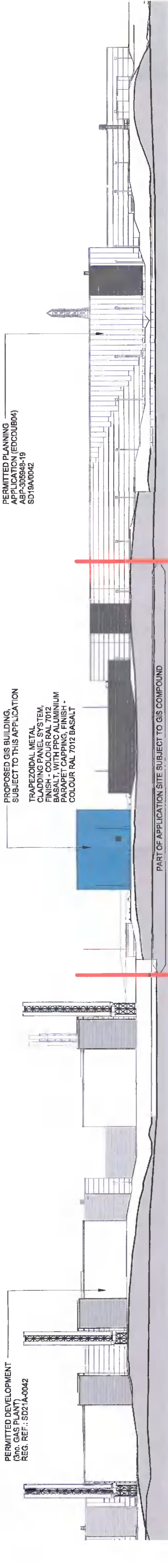
1
INTERNAL SITE ELEVATION - EAST
1 : 500
(NOTE: LANDSCAPING OMITTED FOR CLARITY)



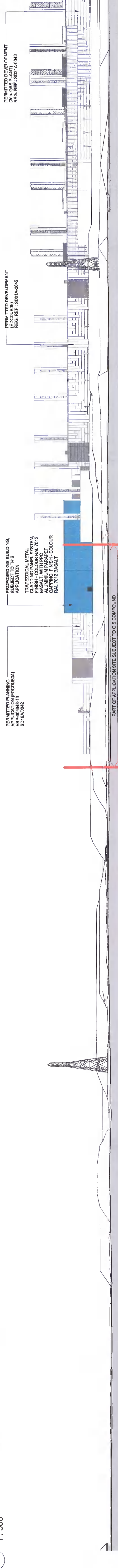
2
INTERNAL SITE ELEVATION - WEST
1 : 500
(NOTE: LANDSCAPING OMITTED FOR CLARITY)



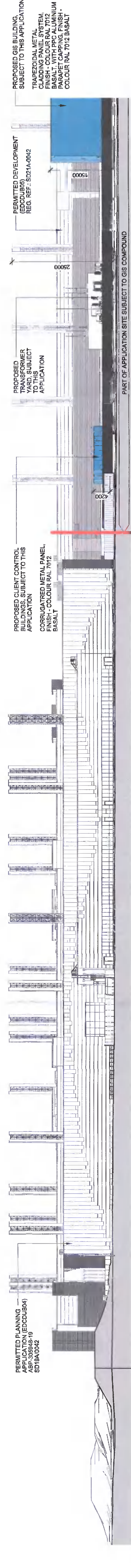
3
INTERNAL SITE ELEVATION - NORTH
1 : 500
(NOTE: LANDSCAPING OMITTED FOR CLARITY)



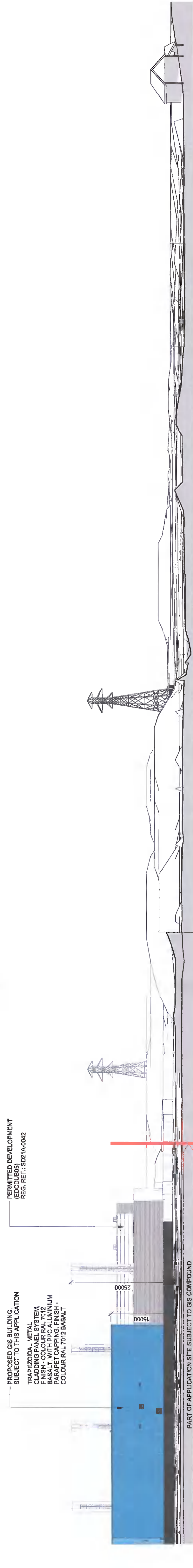
4
INTERNAL SITE ELEVATION - SOUTH
1 : 500
(NOTE: LANDSCAPING OMITTED FOR CLARITY)



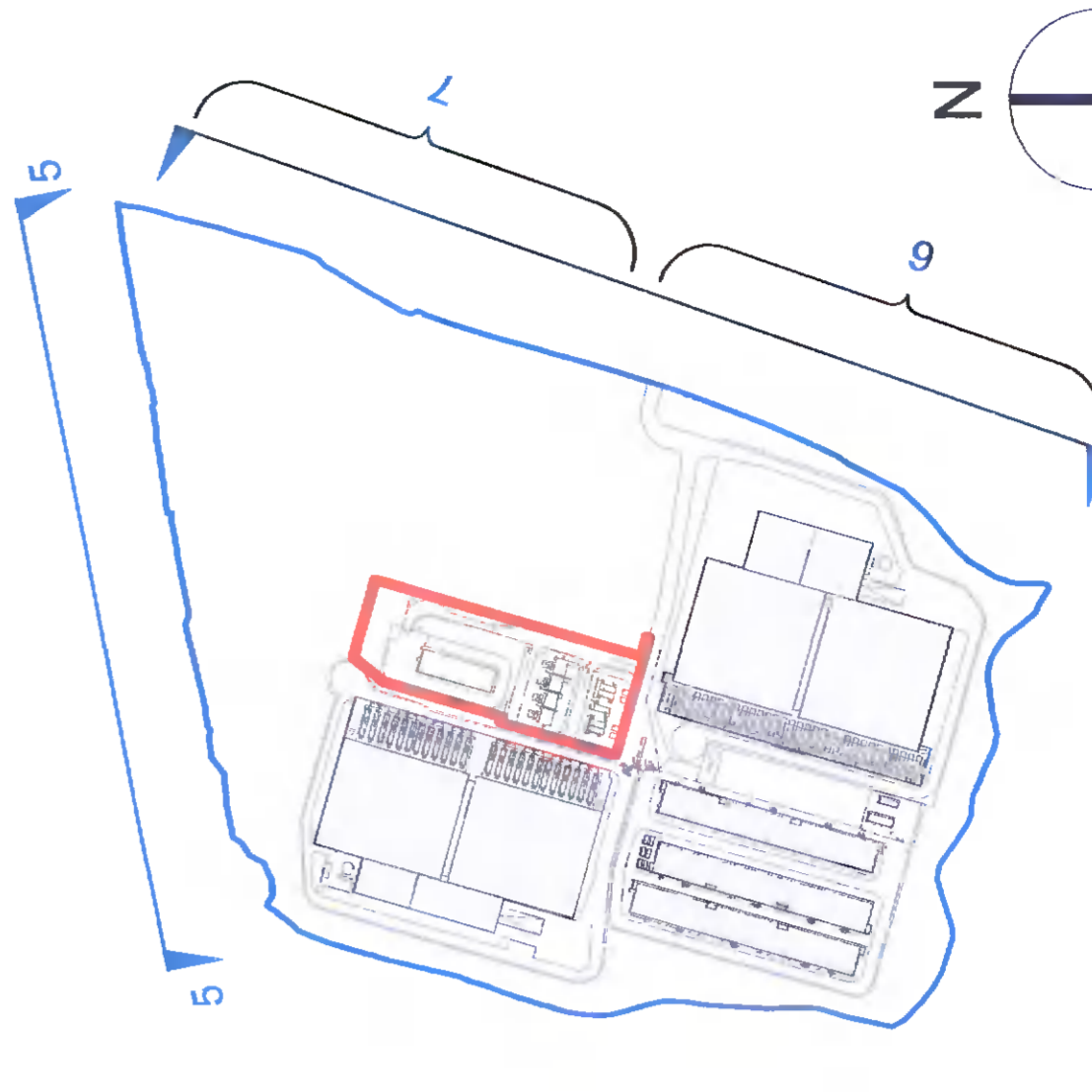
5
CONTEXTUAL SITE ELEVATION - CANAL
1 : 500
(NOTE: LANDSCAPING OMITTED FOR CLARITY)



6
CONTEXTUAL SITE ELEVATION - R120 - A
1 : 500
(NOTE: LANDSCAPING OMITTED FOR CLARITY)



7
CONTEXTUAL SITE ELEVATION - R120 - B
1 : 500
(NOTE: LANDSCAPING OMITTED FOR CLARITY)



KEYPLAN
CONTEXTUAL SITE ELEVATIONS

NOTE: PLEASE REFER TO MAIN ELEVATION & SECTION DRAWINGS FOR BUILDING HEIGHTS

NOTES

DISCIPLINE
Henry J Lyons

PROJECT
 ESSDU898 - KISHOGE 110 KV
 SUBSTATION

Rev	Date	Description	By	Ckd
P1	14/04/2022	ISSUED FOR PLANNING	CDA JM	

CONFIDENTIAL INFORMATION: This development and all designs are the property of Henry J Lyons & Associates. No part of this drawing, which may be reproduced or transmitted in any form or by any means, is to be distributed to a third party, in whole or in part, in violation of the confidentiality of the design.

Drawn by	Checked by	Date
CDA JM	JM	12/11/21
Scale (@ A0)	Status code	Project number
A0	A1	559918

Drawing Title
**PROPOSED OVERALL
 CONTIGUOUS ELEVATIONS**