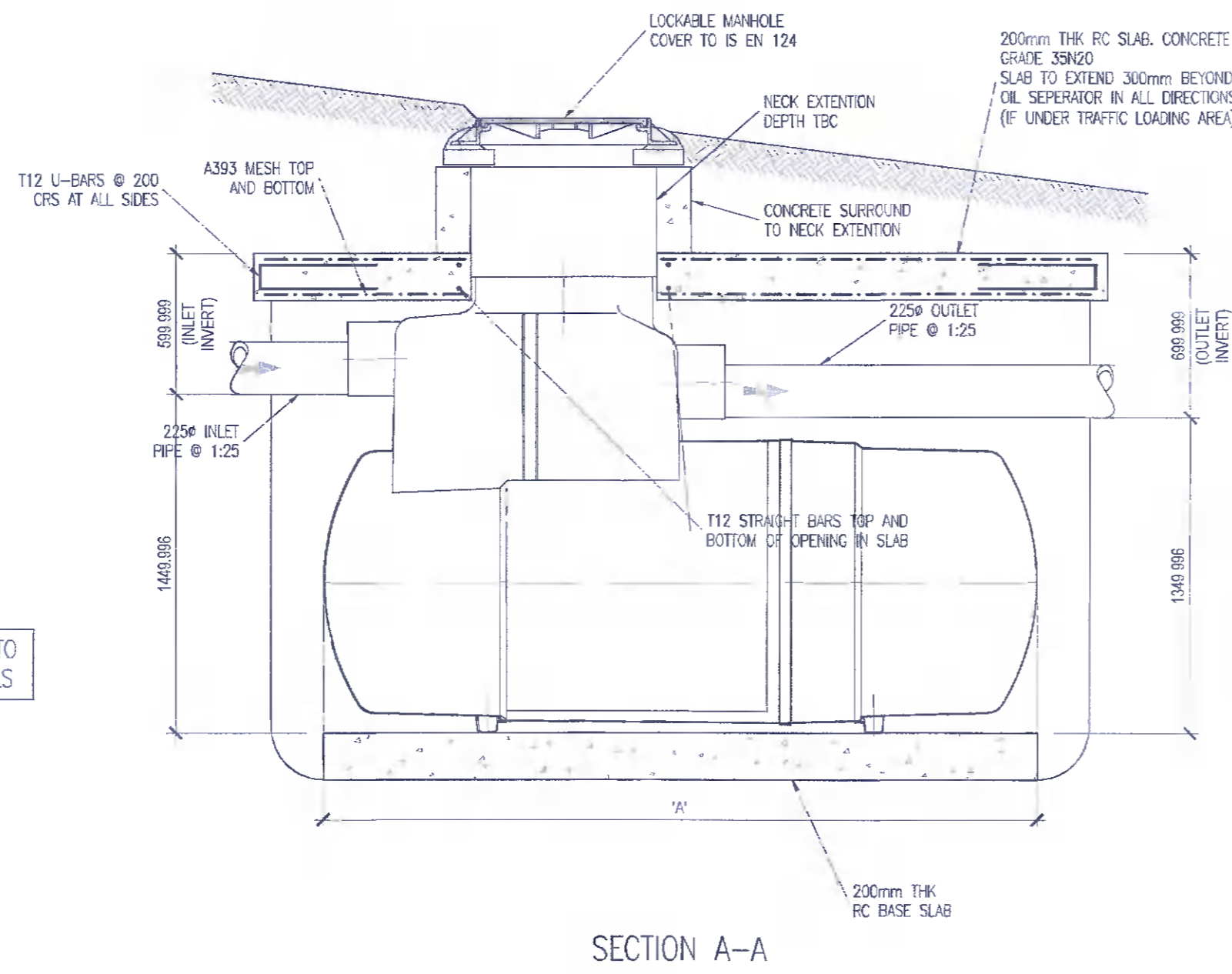
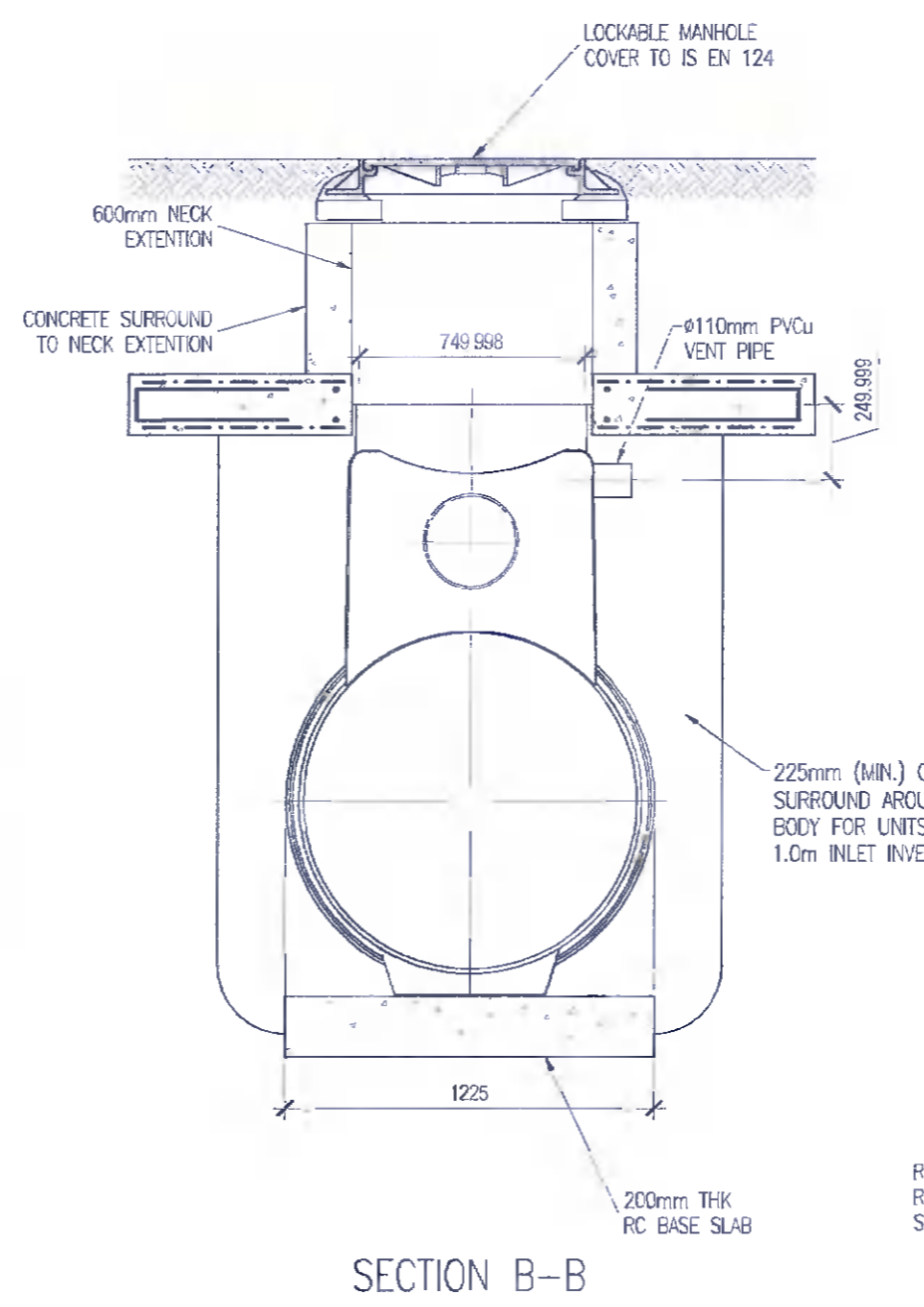


NOTE: FOR UNIT DIMENSIONS REFER TO MANUFACTURERS BROCHURE & DETAILS

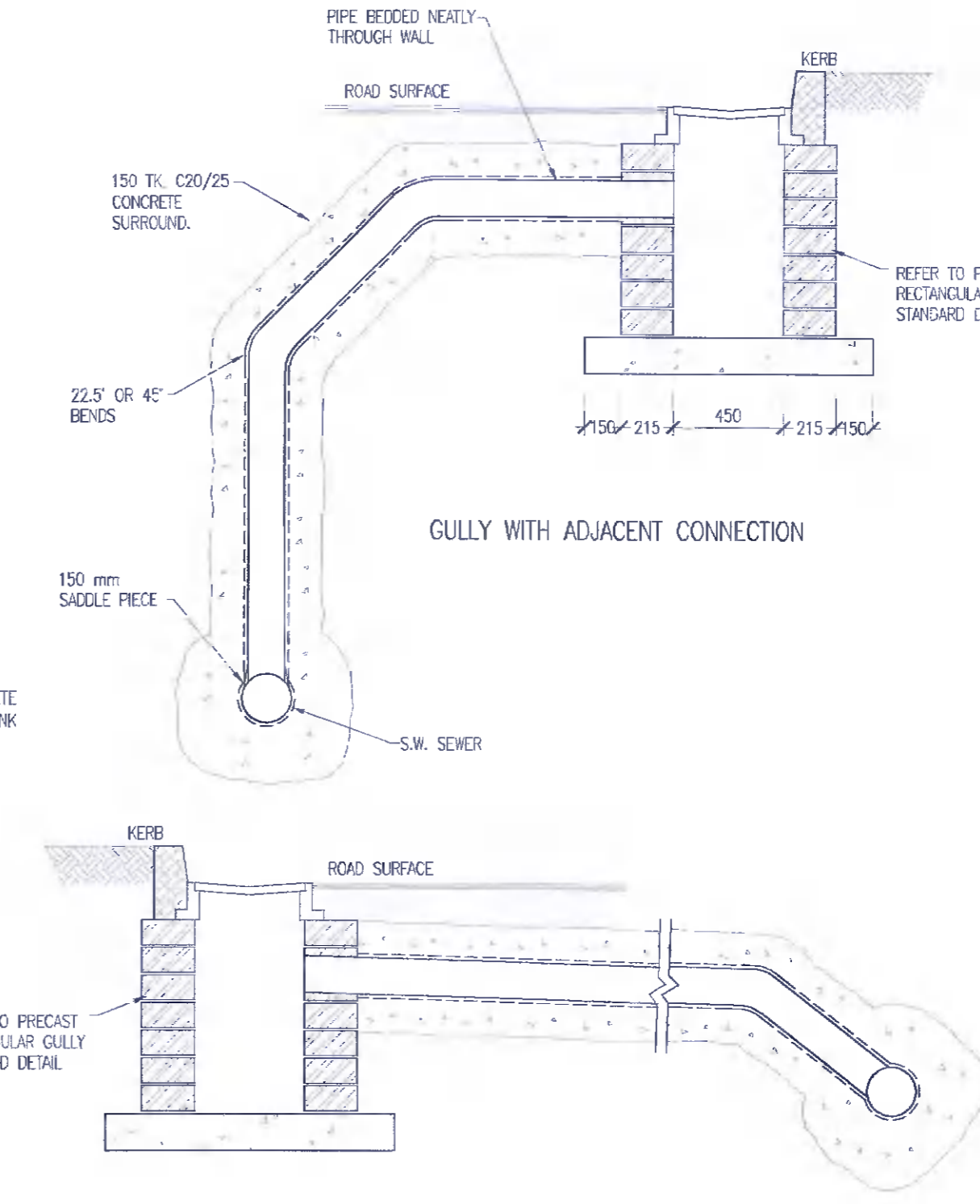


SECTION A-A

PETROL INTERCEPTOR DETAIL
SCALE 1:25



SECTION B-B

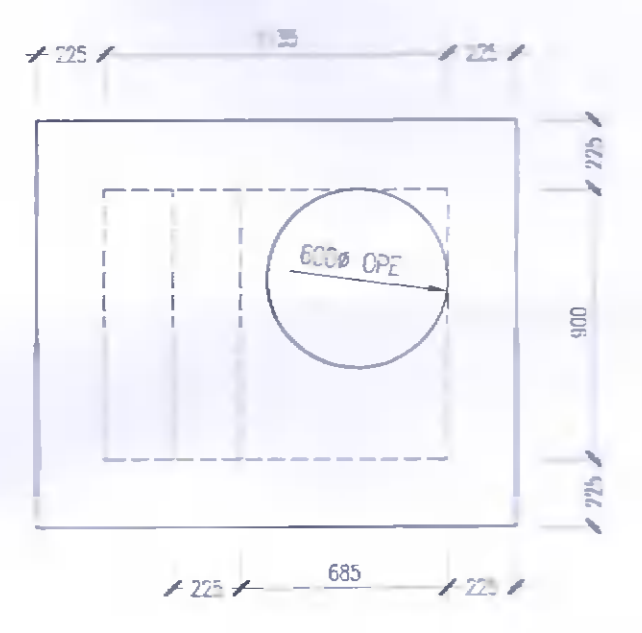


GULLY WITH CONNECTION ON OPPOSITE SIDE OF ROAD

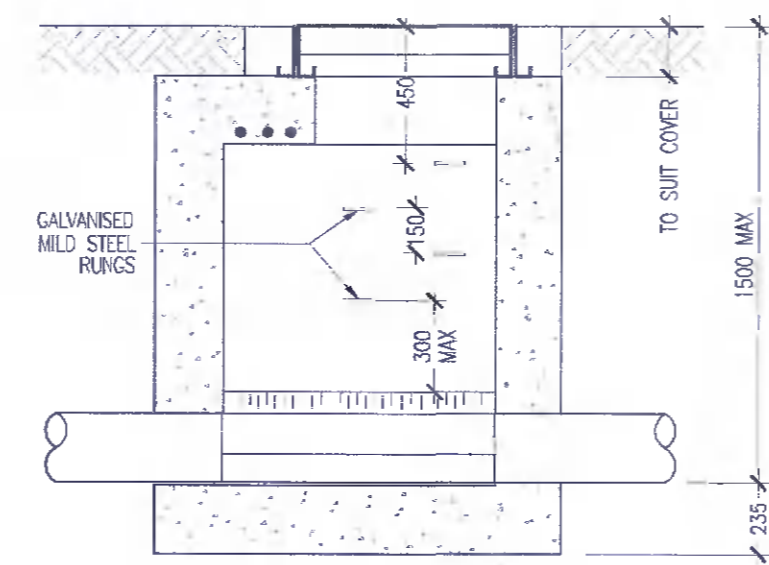
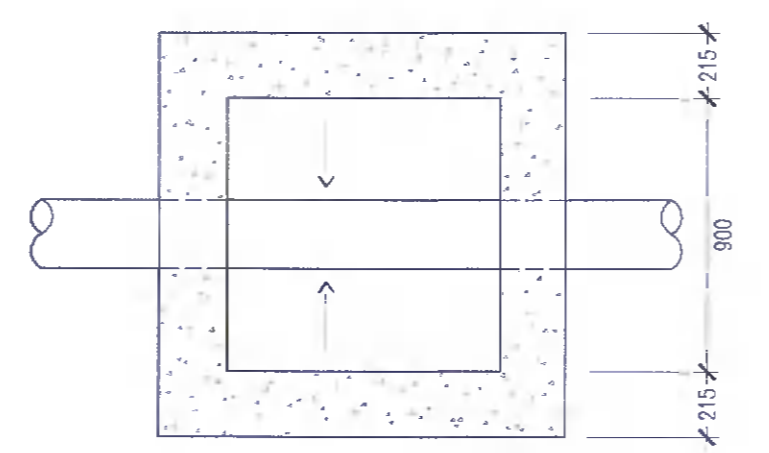
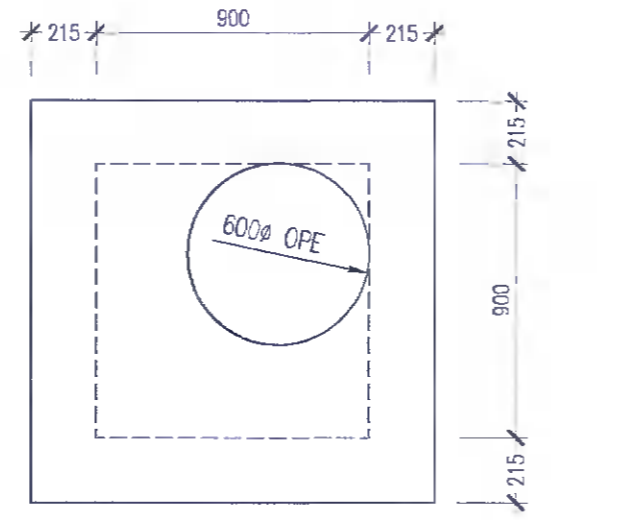


© COPYRIGHT OF THIS DRAWING IS RESERVED BY DBFL CONSULTING ENGINEERS. NO PART SHALL BE REPRODUCED OR TRANSMITTED WITHOUT THEIR WRITTEN PERMISSION.
NO CHANGES OF WHATSOEVER NATURE ARE TO BE MADE TO ANY DETAILS SET OUT OR CONTAINED IN ANY DBFL SPECIFICATIONS OR DRAWINGS UNLESS THE EXPRESS CONSENT HAS BEEN OBTAINED IN ADVANCE, IN WRITING, FROM DBFL.

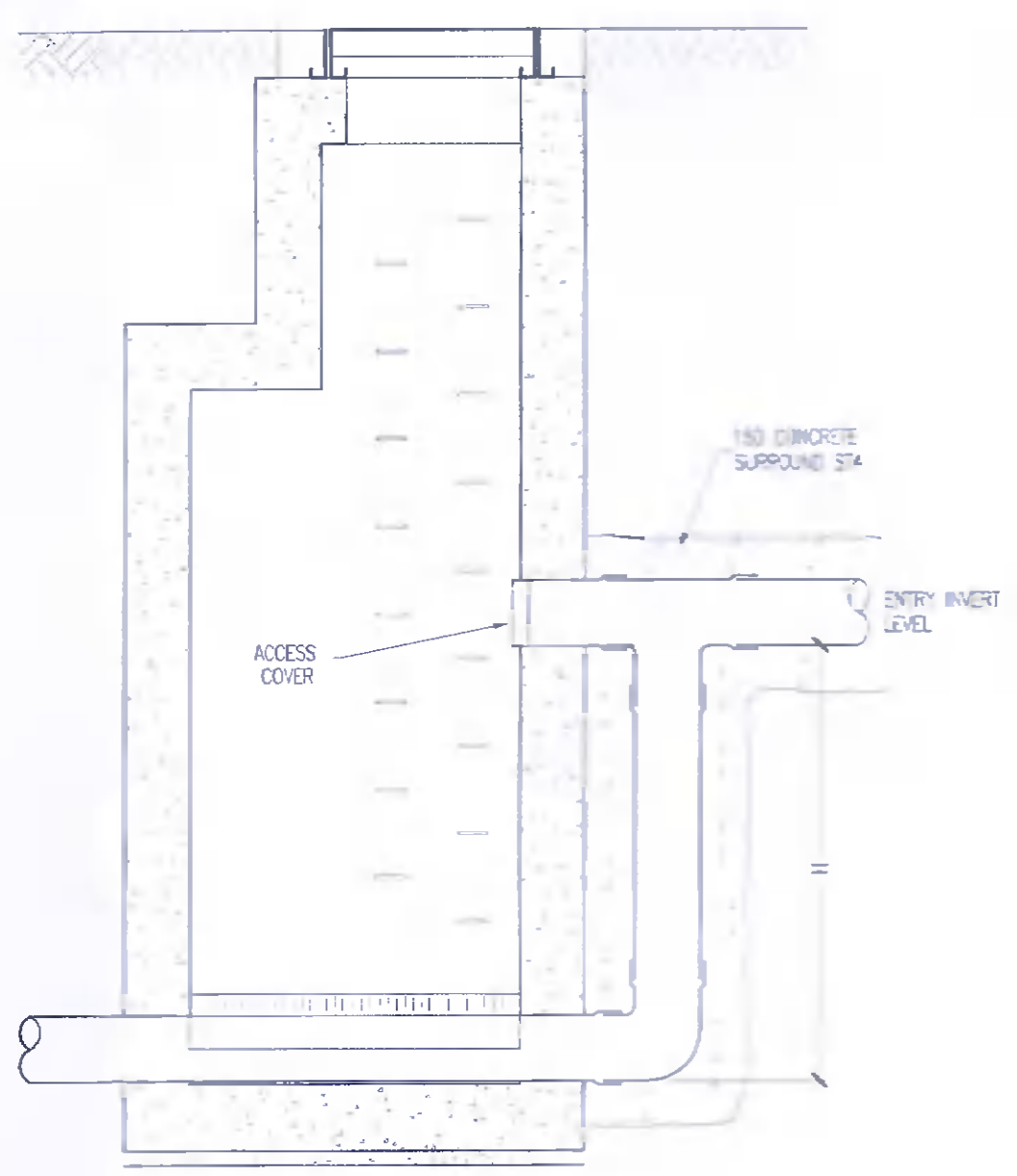
- NOTES:
- C20/25 CONCRETE TO HAVE A MINIMUM CEMENT CONTENT OF 260kg/m³, MAXIMUM WATER/CEMENT RATIO OF 0.65 AND SLUMP CLASS S2.
 - C25/30 CONCRETE TO HAVE A MINIMUM CEMENT CONTENT OF 280kg/m³, MAXIMUM WATER/CEMENT RATIO OF 0.65 AND SLUMP CLASS S2.
 - C40/50 CONCRETE TO HAVE A MINIMUM CEMENT CONTENT OF 400kg/m³, MAXIMUM WATER/CEMENT RATIO OF 0.45 AND SLUMP CLASS S3.
 - WHERE CLASS 6E1/6E2 CAPING MATERIAL IS PROPOSED WITHIN 500mm OF CONCRETE OR STEEL CLASS 6N TO BE USED INSTEAD.



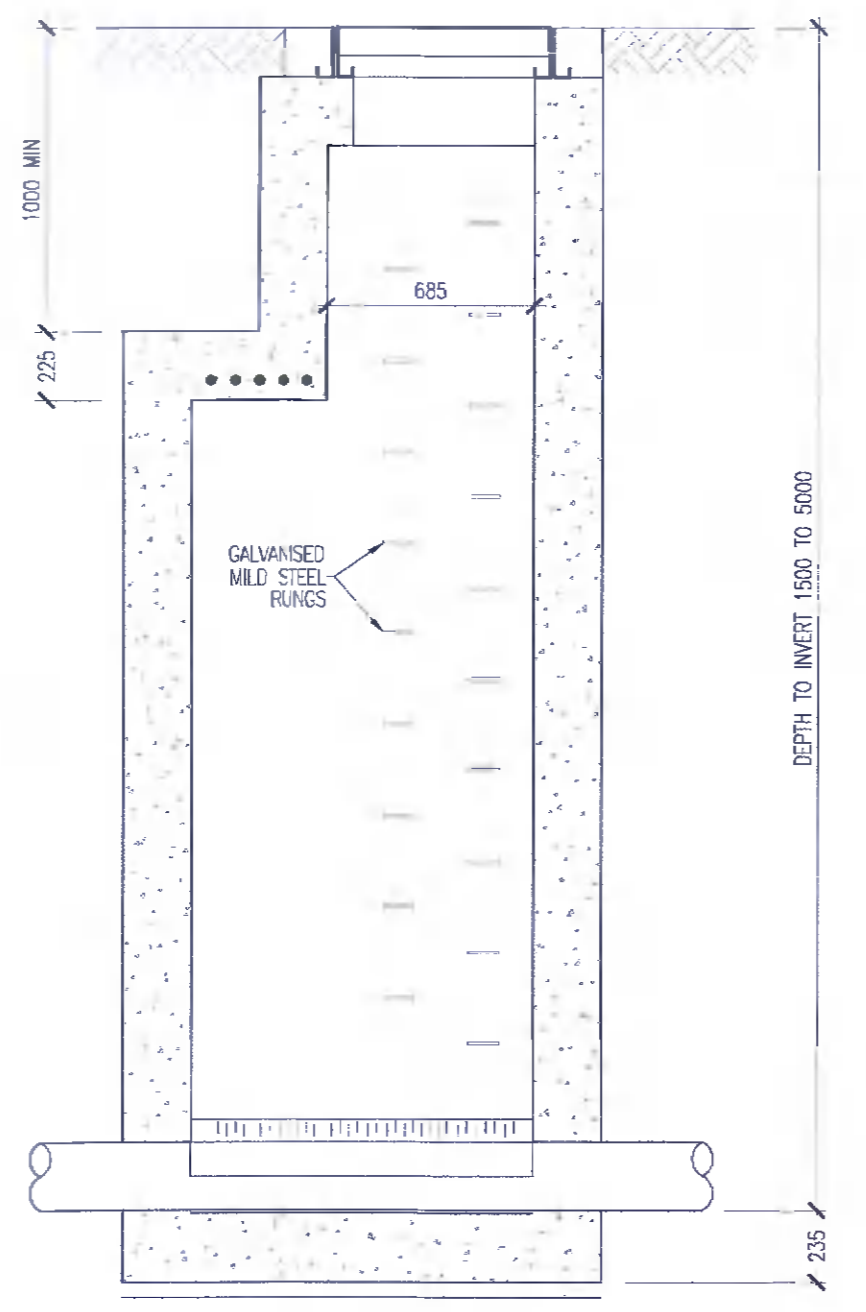
INLET DIA. mm	H MIN. mm
225	600
300	600
375	750
450	750
525	750
600	750
750	750



SHALLOW MANHOLE



BACKDROP MANHOLE



DEEP MANHOLE
PRIVATE DRAINAGE

[ALTERNATIVE IN-SITU REINFORCED CONCRETE MANHOLE DETAILS]
(STRUCTURAL ENGINEER TO PROVIDE CONSTRUCTION DETAILS)

NOTE:
ALL WORKS & SPECIFICATIONS TO BE UNDERTAKEN IN ACCORDANCE WITH:
• T11 SPECIFICATION FOR ROADWORKS
• RECOMMENDATIONS FOR SITE DEVELOPMENT WORKS

NOTE:
FOR WATERMAIN DETAILS REFER TO IRISH WATER CONNECTION AGREEMENT & IRISH WATER 'WATER INFRASTRUCTURE STANDARD DETAILS' & CODE OF PRACTICE

NOTE:
FOR DETAILS OF FOUL SEWER MANHOLES REFER TO IRISH WATER CONNECTION AGREEMENT & IRISH WATER 'WASTEWATER INFRASTRUCTURE STANDARD DETAILS' & CODE OF PRACTICE

rev	date	ISSUED FOR PLANNING	K.J.E.	RTM
		description	by	chkd.
		A - Approved		
		B - Approved with comments		
		C - Do not use		

DBFL Consulting Engineers
Civil, Structural & Mechanical Engineering
www.dbfl.ie

DUBLIN OFFICE: Ormond House, Upper Ormond Quay, Dublin 7, D07 W054
PHONE: +353 1 402 4000

CHICK OFFICE: 36 South Mall, Cork, T12 CT91
PHONE: +353 21 262 053

WATERFORD OFFICE: Suite B5 The Atrium, Maritime Gate, Casemts Street, Waterford, X91 W028
PHONE: +353 51 959 040

Project ref:
WAREHOUSING / LOGISTICS & OFFICES AT CALMOUNT ROAD, BALLYMOUNT

Drawing title:
SURFACE WATER STANDARD DETAILS - SHEET 4

client:
BLACKWIN LIMITED

designed by	author	scale	sheet size
RTM	K.J.E.	1:25	A1

drawing no: 210175-DBFL-SW-SP-DR-C-5014 revision: P01