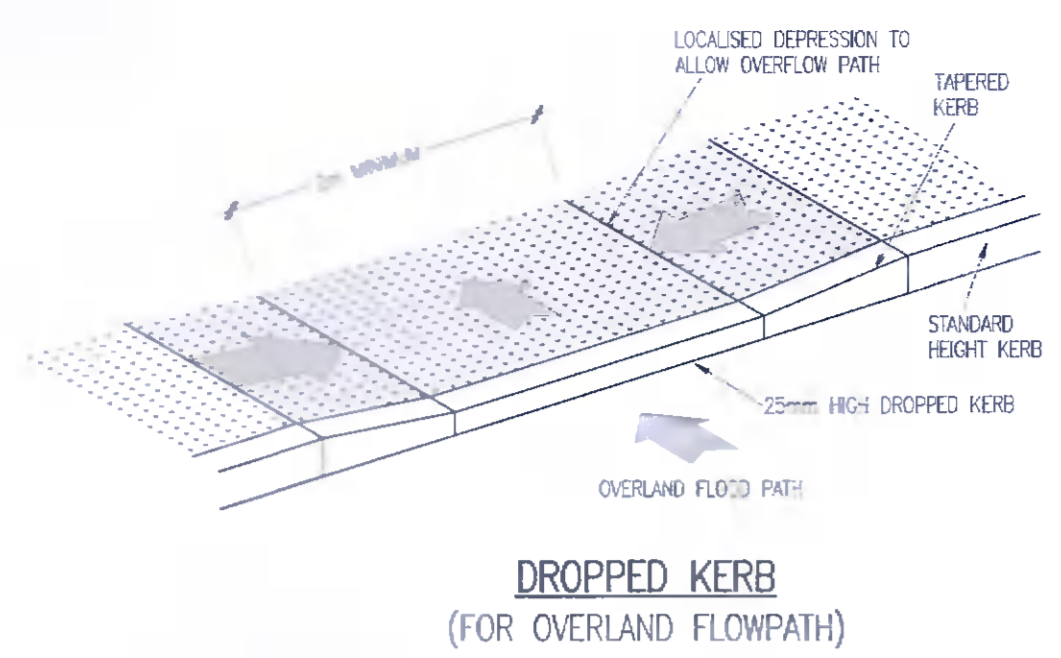




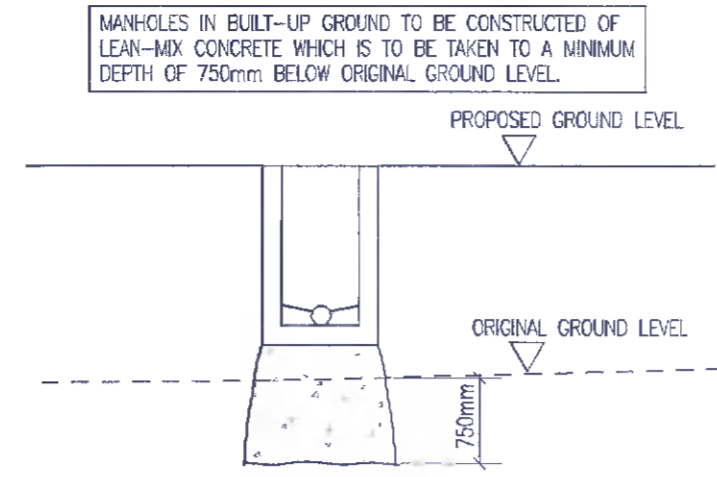
© COPYRIGHT OF THIS DRAWING IS RESERVED BY DBFL CONSULTING ENGINEERS. NO PART SHALL BE REPRODUCED OR TRANSMITTED WITHOUT THEIR WRITTEN PERMISSION.

NO CHANGES OF WHATSOEVER NATURE ARE TO BE MADE TO ANY DETAILS SET OUT OR CONTAINED IN ANY DBFL SPECIFICATIONS OR DRAWINGS UNLESS THE EXPRESS CONSENT HAS BEEN OBTAINED IN ADVANCE, IN WRITING, FROM DBFL.

- NOTES:
- C20/25 CONCRETE TO HAVE A MINIMUM CEMENT CONTENT OF 280kg/m<sup>3</sup>, MAXIMUM WATER/CEMENT RATIO OF 0.65 AND SLUMP CLASS S2.
  - C25/30 CONCRETE TO HAVE A MINIMUM CEMENT CONTENT OF 280kg/m<sup>3</sup>, MAXIMUM WATER/CEMENT RATIO OF 0.65 AND SLUMP CLASS S2.
  - C40/50 CONCRETE TO HAVE A MINIMUM CEMENT CONTENT OF 400kg/m<sup>3</sup>, MAXIMUM WATER/CEMENT RATIO OF 0.45 AND SLUMP CLASS S3.
  - WHERE CLASS B1/B2 CAPPING MATERIAL IS PROPOSED WITHIN 500mm OF CONCRETE OR STEEL CLASS 6N TO BE USED INSTEAD.

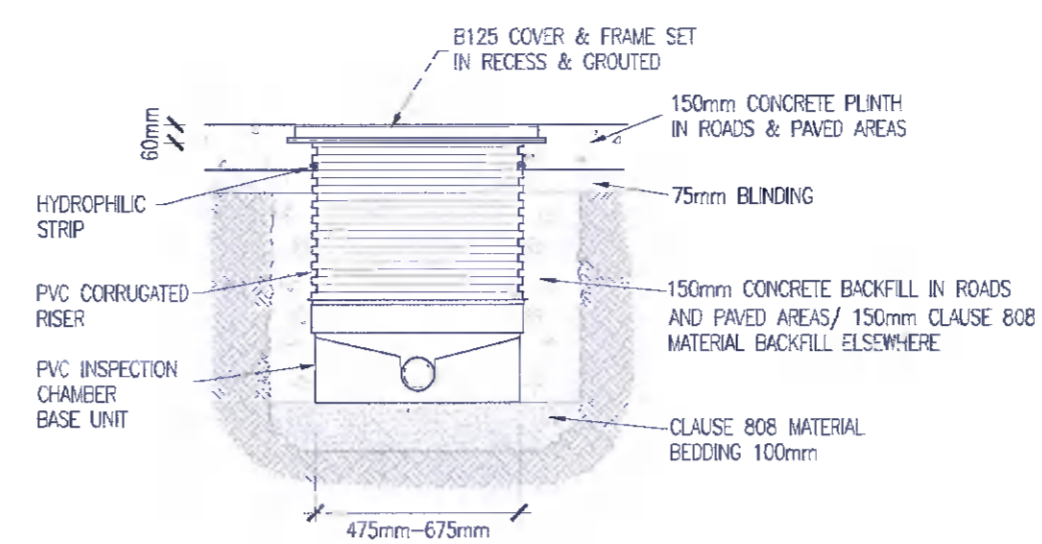


**DROPPED KERB**  
(FOR OVERLAND FLOWPATH)

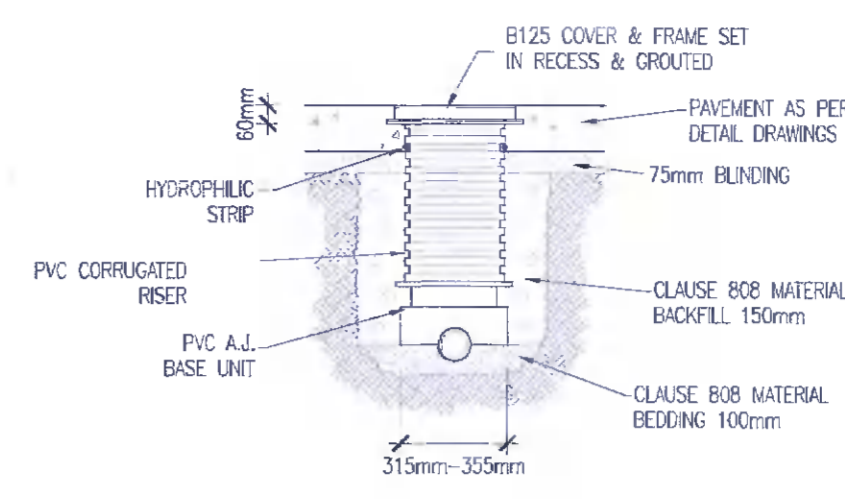


NOTE: ALL DRAINS ABOVE EXISTING GROUND LEVEL TO BE CONSTRUCTED BY FIRST STRIPPING TOPSOIL AND MAKING UP GROUND TO PROPOSED LEVELS. TRENCH EXCAVATION THEN TO BE CARRIED OUT TO ORIGINAL STRIPPED GROUND LEVEL AND GRANULAR MATERIAL TO BE LAID IN WELL-COMPACTED LAYERS (MAX. 150mm THICK) TO INVERT LEVEL. PIPE THEN TO BE LAID.

**DRAINS IN BUILT-UP GROUND**



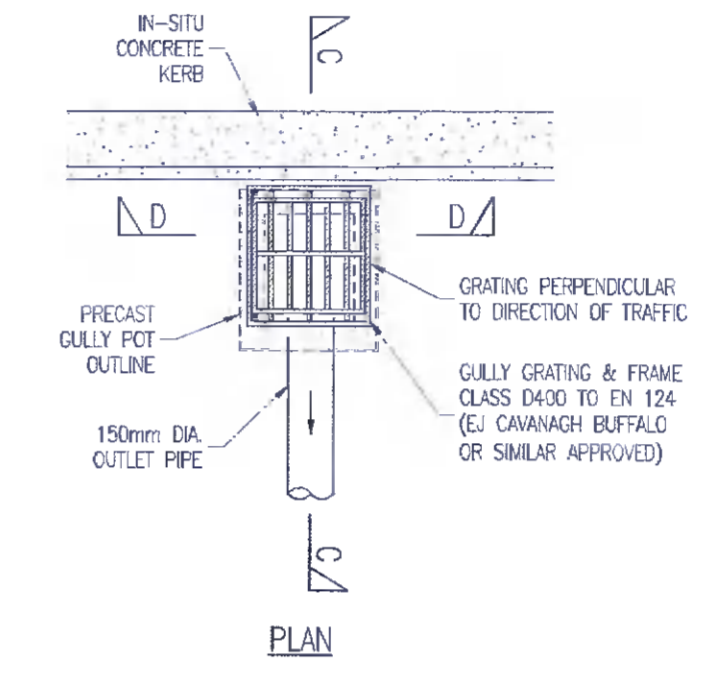
**INSPECTION CHAMBER**



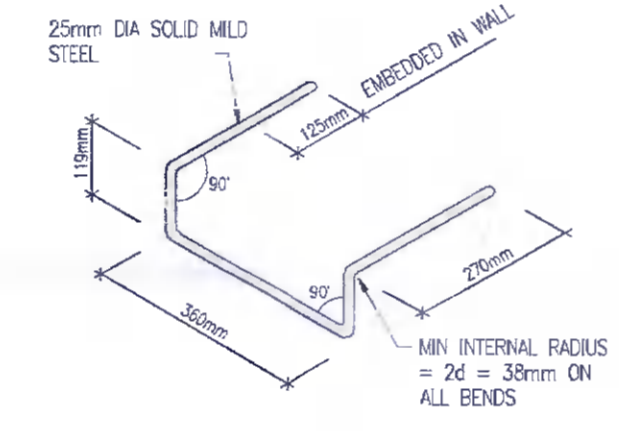
**A.J. DETAIL**

DIAMETER OF LARGEST PIPE IN MANHOLE (mm)	CHAMBER SECTION DIAMETER (mm)		
	6m - 8m	8m - 12m	12m - 15m
LESS THAN 375	1000	1050	1500
<600	1200	1200	1500
<675	1350	1350	1500
<750	1350	1500	1500
<900	1500	1500	1500
<1200	2100	2100	2100

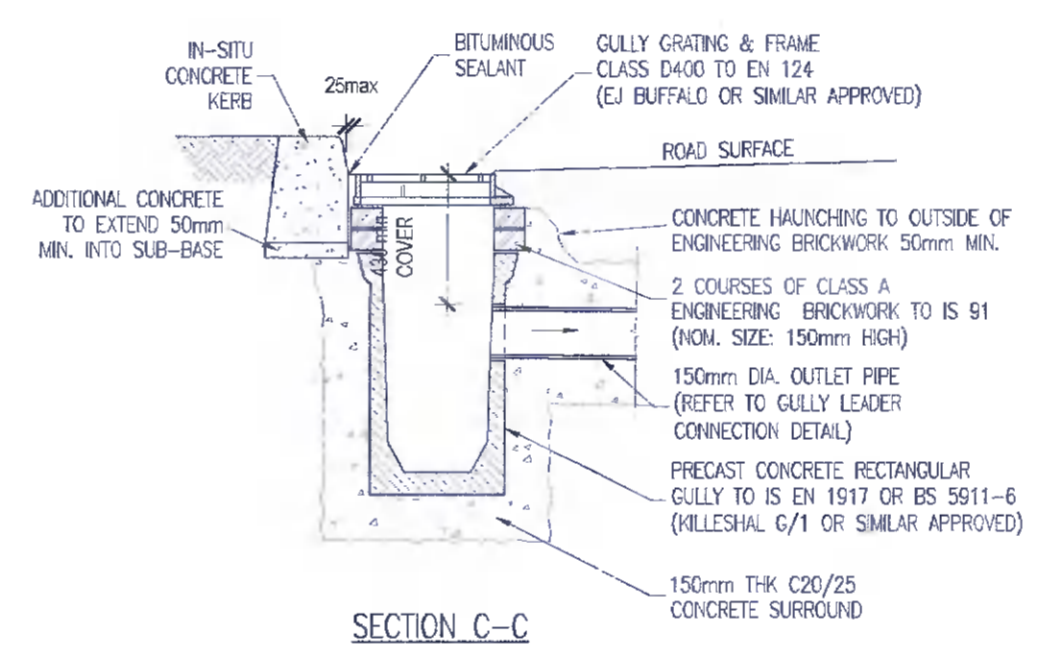
**TABLE 1**



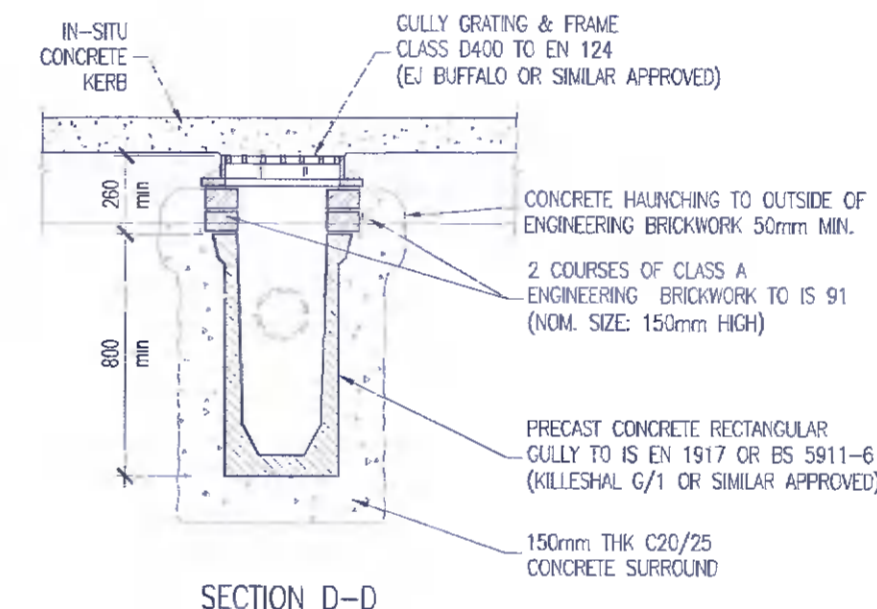
**PLAN**



**STANDARD RUNG**  
HOT DIP GALVANIZED.  
(IRON STEPS NOT PERMITTED)



**SECTION C-C**



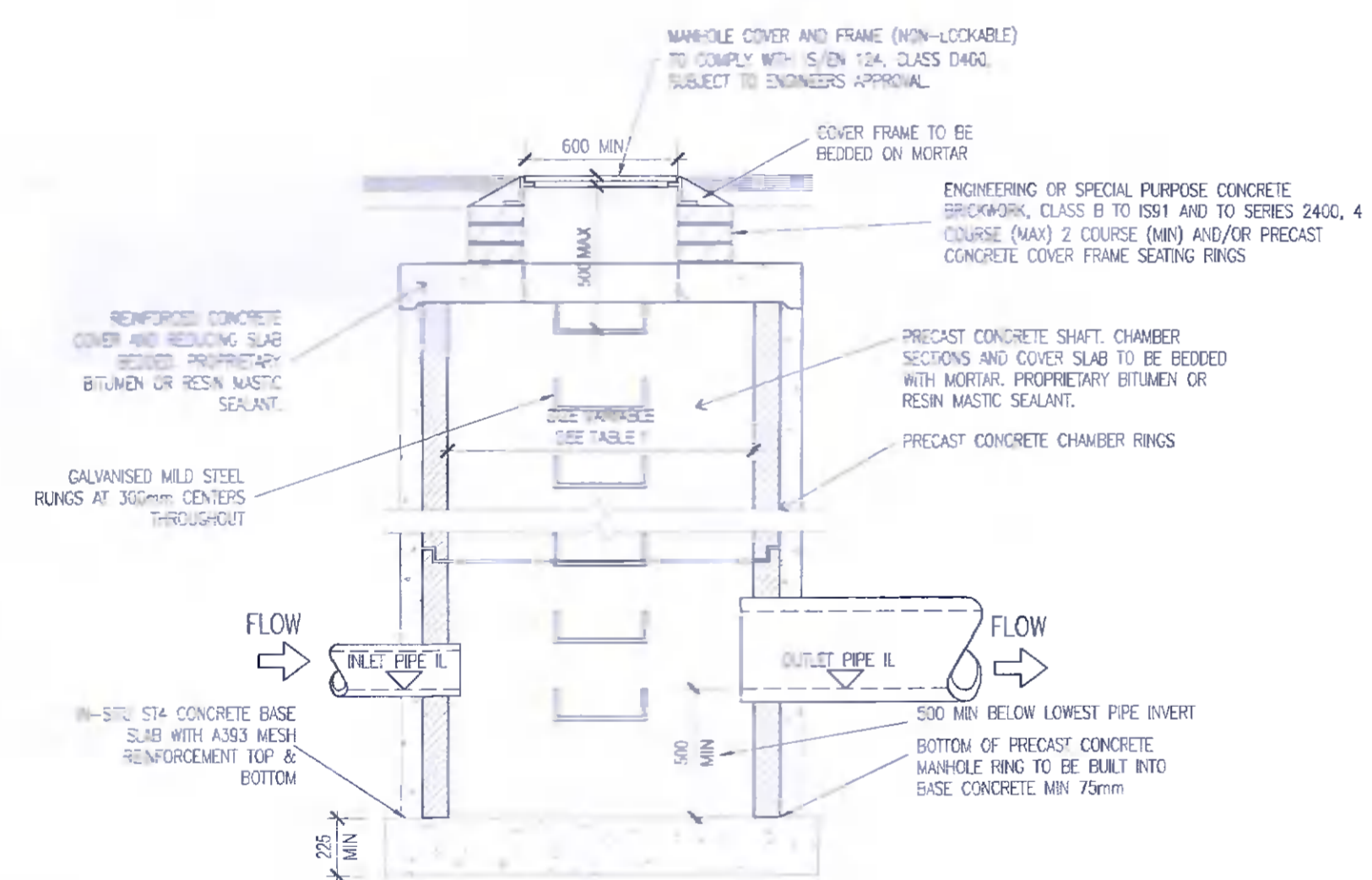
**SECTION D-D**

**RECTANGULAR PRECAST ROAD GULLY DETAIL**

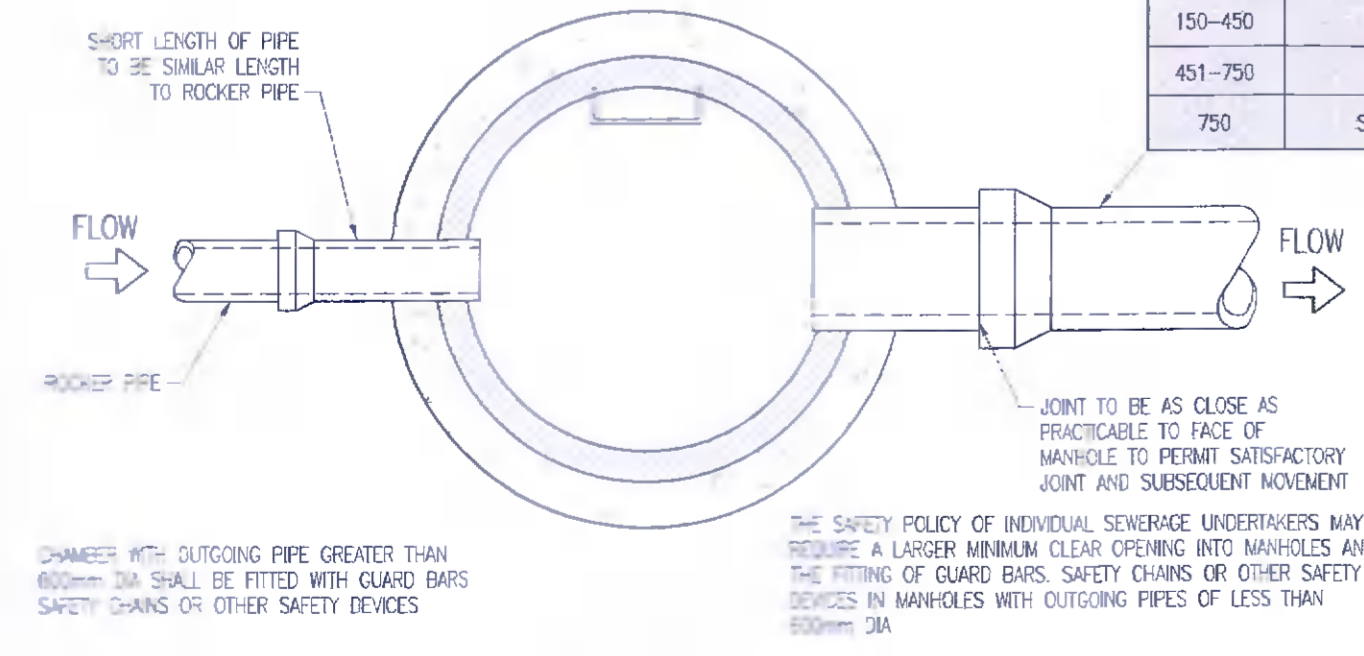
NOTE:  
ALL WORKS & SPECIFICATIONS TO BE UNDERTAKEN IN ACCORDANCE WITH:  
• TII SPECIFICATION FOR ROADWORKS  
• RECOMMENDATIONS FOR SITE DEVELOPMENT WORKS

NOTE:  
FOR WATERMAIN DETAILS REFER TO IRISH WATER CONNECTION AGREEMENT & IRISH WATER 'WATER INFRASTRUCTURE STANDARD DETAILS' & CODE OF PRACTICE

NOTE:  
FOR DETAILS OF FOUL SEWER MANHOLES REFER TO IRISH WATER CONNECTION AGREEMENT & IRISH WATER 'WASTEWATER INFRASTRUCTURE STANDARD DETAILS' & CODE OF PRACTICE

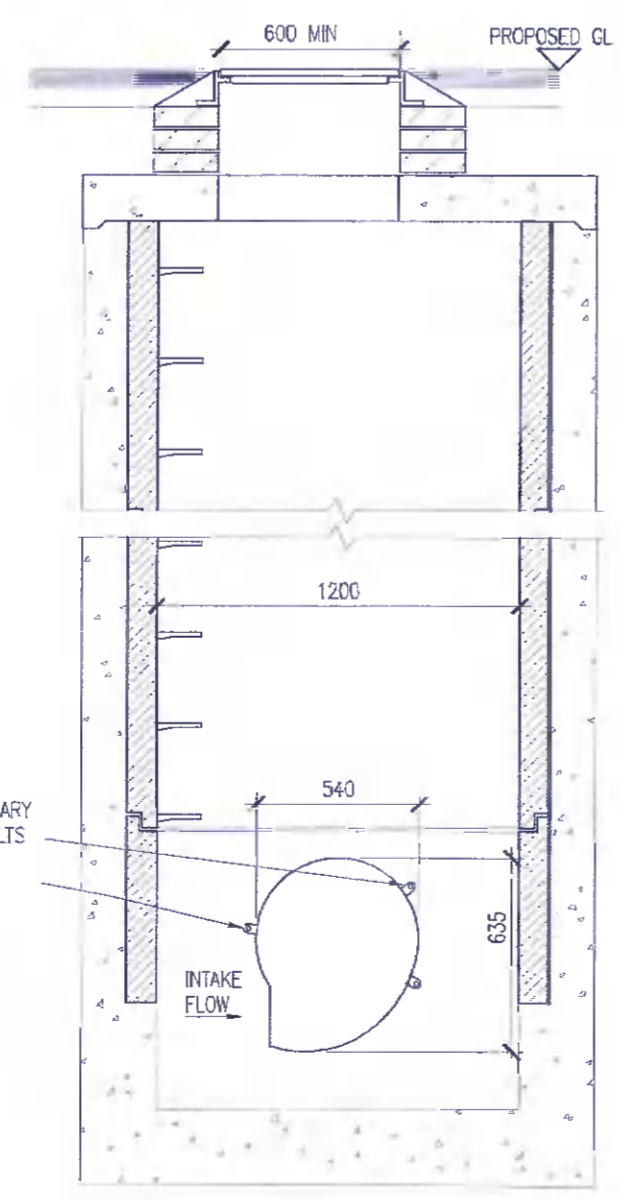


PIPE DIA	ROCKER PIPE LENGTH
150-450	0.5-0.75
451-750	0.75-1.0
750	SEE GUIDANCE

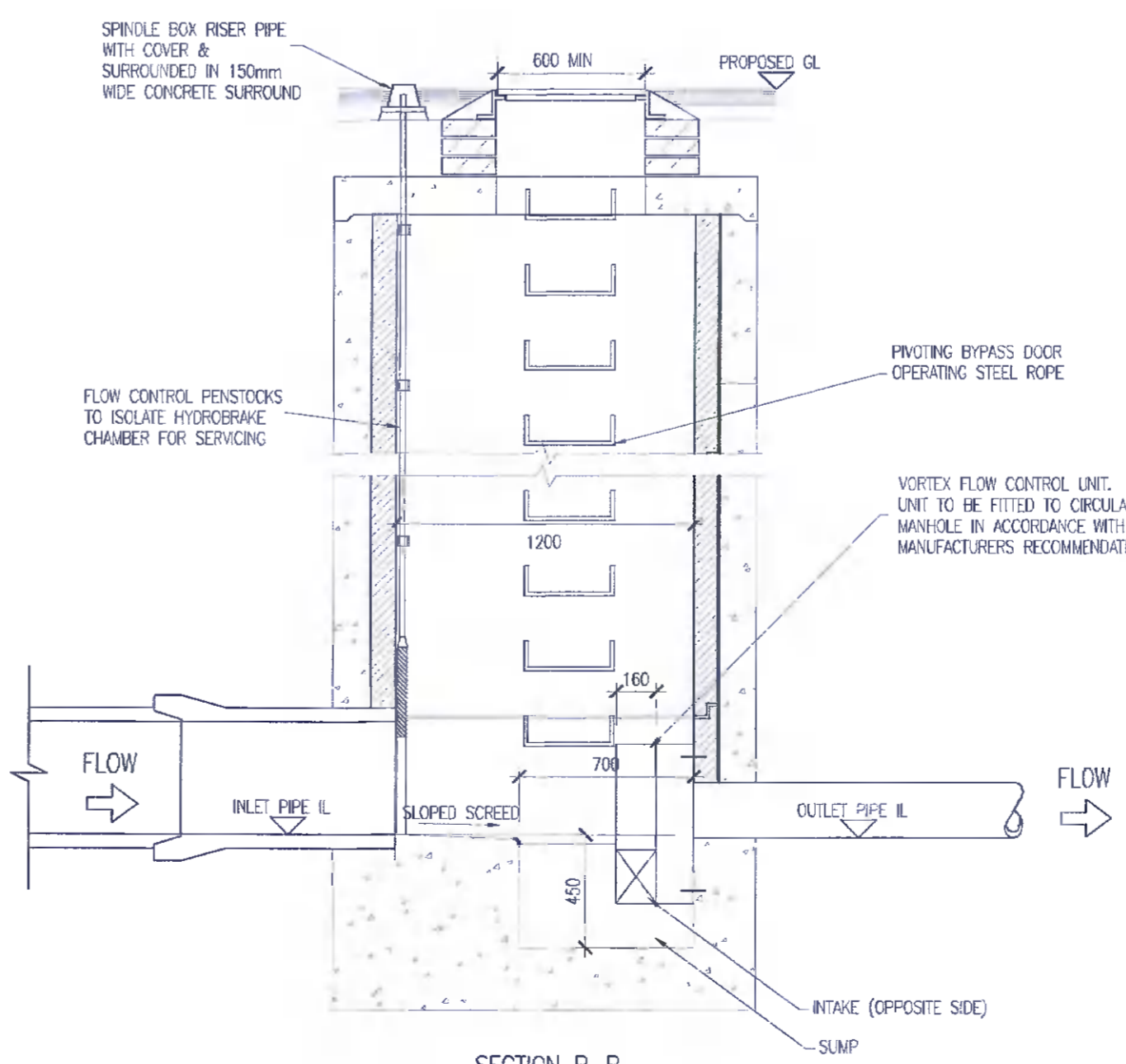


**TYPICAL CATCHPIT/SILT TRAP MANHOLE DETAIL**  
(GREATER THAN 1m DEPTH)

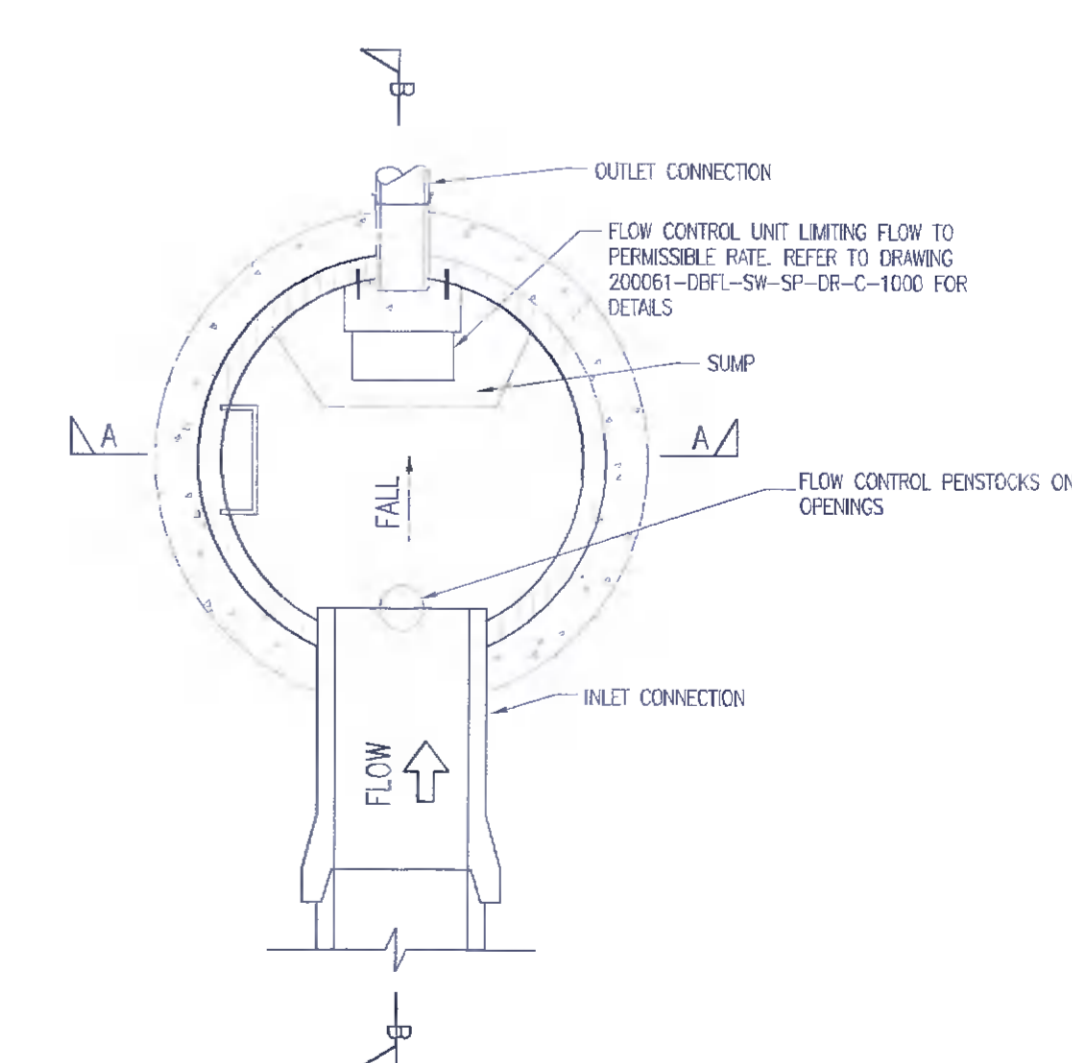
1:25



**SECTION A-A**



**SECTION B-B**



**TYPICAL FLOW CONTROL CHAMBER**  
SCALE 1:25

(REFER TO DRAWING 210175-DBFL-SW-SP-DR-C-5011 FOR MANHOLE CONSTRUCTION DETAILS)

rev	date	description	author	checked
P01	31/03/22	ISSUED FOR PLANNING	K.J.E	RTM
client approval		A - Approved		
		B - Approved with comments		
		C - Do not use		

S2 - INFORMATION PLANNING

**DBFL Consulting Engineers**

DBFL INTEL: Ground House, Upper Ormonod Quay, Dublin 7, D07 W074  
PHONE: +353 1 460 4000  
CORK OFFICE: 14 South Mall, Cork, T12 C7H1  
PHONE: +353 21 294030  
WATERFORD OFFICE: Suite 10 The Atrium, Marina Quay, Canals Quay, Waterford, X91 W028  
PHONE: +353 61 301 800

project ref:  
**WAREHOUSING / LOGISTICS & OFFICES AT CALMOUNT ROAD, BALLYMOUNT**

drawing title:  
**SURFACE WATER STANDARD DETAILS - SHEET 3**

client:  
**BLACKWIN LIMITED**

designed by	author	scale	sheet size
RTM	K.J.E	1:25	A1
drawing no.	revision		
210175-DBFL-SW-SP-DR-C-5013	P01		