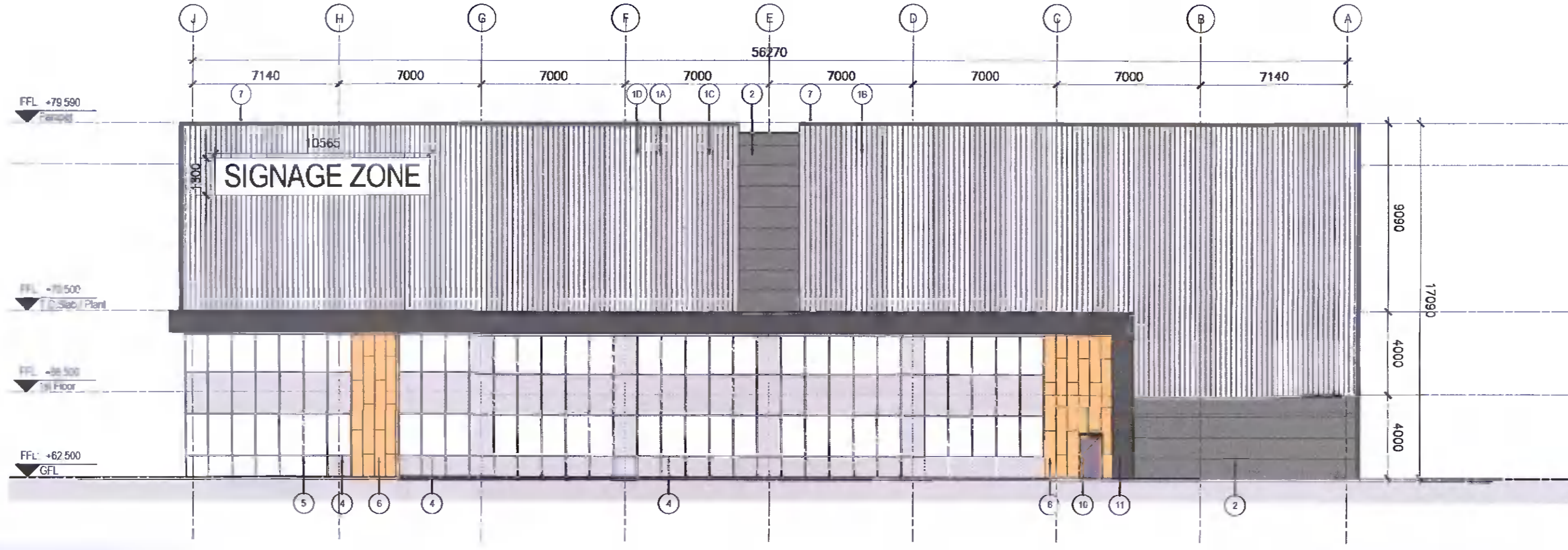
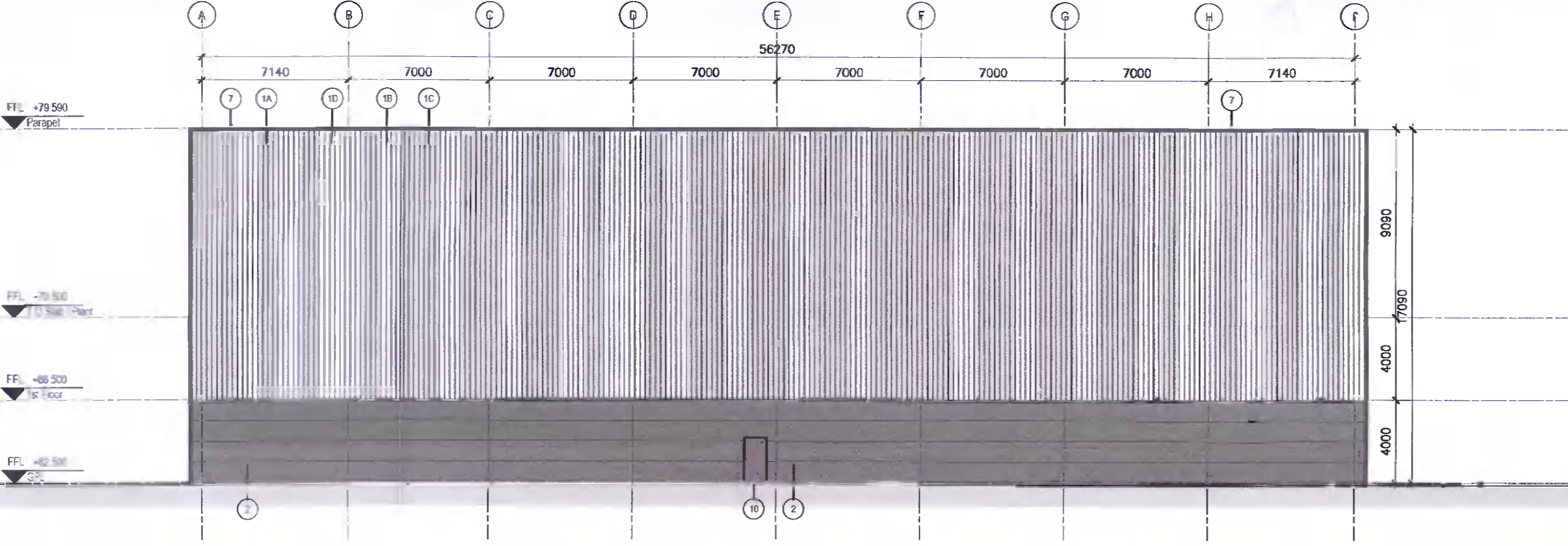


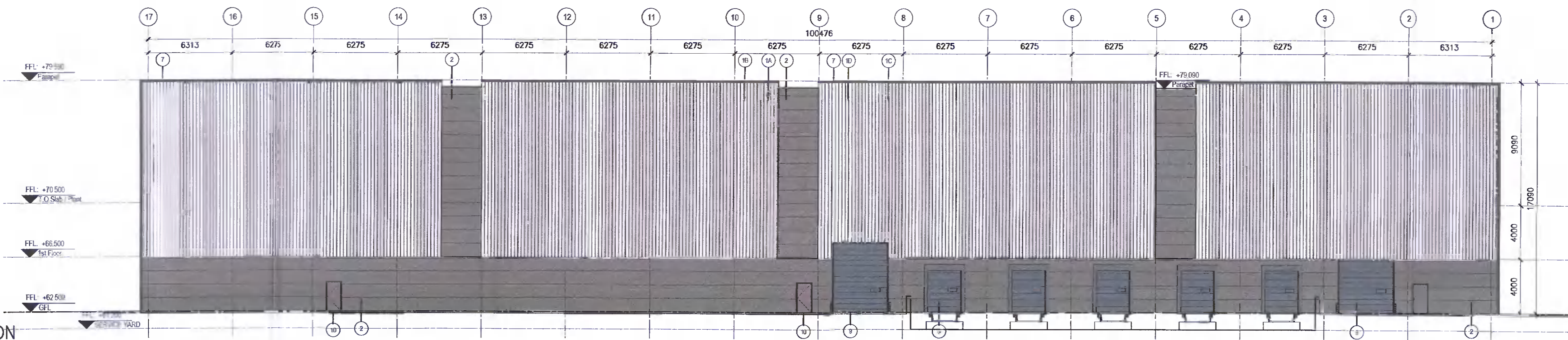
1 SOUTH-EAST ELEVATION
PA-403 UNIT 02 Scale: 1:200



2 NORTH-EAST ELEVATION
PA-403 UNIT 02 Scale: 1:200



3 SUTH-WEST ELEVATION
PA-403 UNIT 02 Scale: 1:200



4 NORTH-WEST ELEVATION
PA-403 UNIT 02 Scale: 1:200

- NOTES:**
- 1A Quadcore KS 1000 RW - 91mm thick panel. Colour: Goosewing Grey.
 - 1B Quadcore KS 1000 RW - 91mm thick panel. Colour: Grey White.
 - 1C Quadcore KS 1000 RW - 91mm thick panel. Colour: Pure Grey.
 - 1D Quadcore KS 1000 RW - 91mm thick panel. Colour: White AL Forte.
 - 2 Quadcore AWP 1000 FL - 88mm thick panel. Colour: Anthracite.
 - 3 Green wall panel - galvan MS frame with ST SL lattice to S.E.'s details with planting and irrigation system to Landscape Consultant requirements.
 - 4 Thermally broken and self-draining PPC aluminium double glazed curtain wall system with PPC aluminium spandrels and aluminium pressure caps. Colour: Anthracite.
 - 5 Thermally broken and self-draining PPC aluminium double glazed curtain wall system with glazed spandrels. Colour: Anthracite.
 - 6 Kingspan Dri-Design rainscreen system with shadow gap panels on 100mm quadcore Kerier system. Colour - To be selected.
 - 7 PPC aluminium coping. Colour: Anthracite.
 - 8 PPC aluminium dock leveller door to match cladding.
 - 9 PPC aluminium grade level door to match cladding.
 - 10 Insulated PPC MS escape door to match cladding.
 - 11 Canopy. Colour: Anthracite to outer faces, Colour: Cotton to inner reveals.
 - 12 High performance opaque light panel, frame colour anthracite.

COPYRIGHT:
The design and details shown on this drawing are applicable to their project only and may not be reproduced in whole or in part or be used for any other project or purpose without the written permission of TOT ARCHITECTS with whom copyright resides.
DO NOT SCALE from this drawing. Use figured dimensions.
Contractor to check all dimensions on site prior to commencement of works. Any discrepancies are to be referred to the ARCHITECT.

KEY PLAN

KEY SITE PLAN

REVISIONS

NO.	DATE	REVISION

30.03.2022 PT ND ISSUED FOR PLANNING

DATE	REV.	BY	CHECKED	DESCRIPTION

TOT ARCHITECTS

REGISTERED OFFICE: 49 Upper Mount Street, Dublin 2, D02 F8B5, Ireland. T: +353 1 705 7800. W: www.totarch.ie. E: info@totarch.ie

PROJECT: WAREHOUSE/LOGISTICS, OFFICE & CAFÉ / RESTAURANT DEVELOPMENT AT CALMOUNT ROAD, BALLYMOUNT, DUBLIN 12 STAGE: PLANNING

DRAWING TITLE: UNIT 2 ELEVATIONS

DATE	SCALE	DRAWING NO.
FEB 2022	1:200 @ A1	PA-403

DRAWN	CHECKED	NO.	SHEET SIZE	REVISION
PT	ND	18-42	A1	*