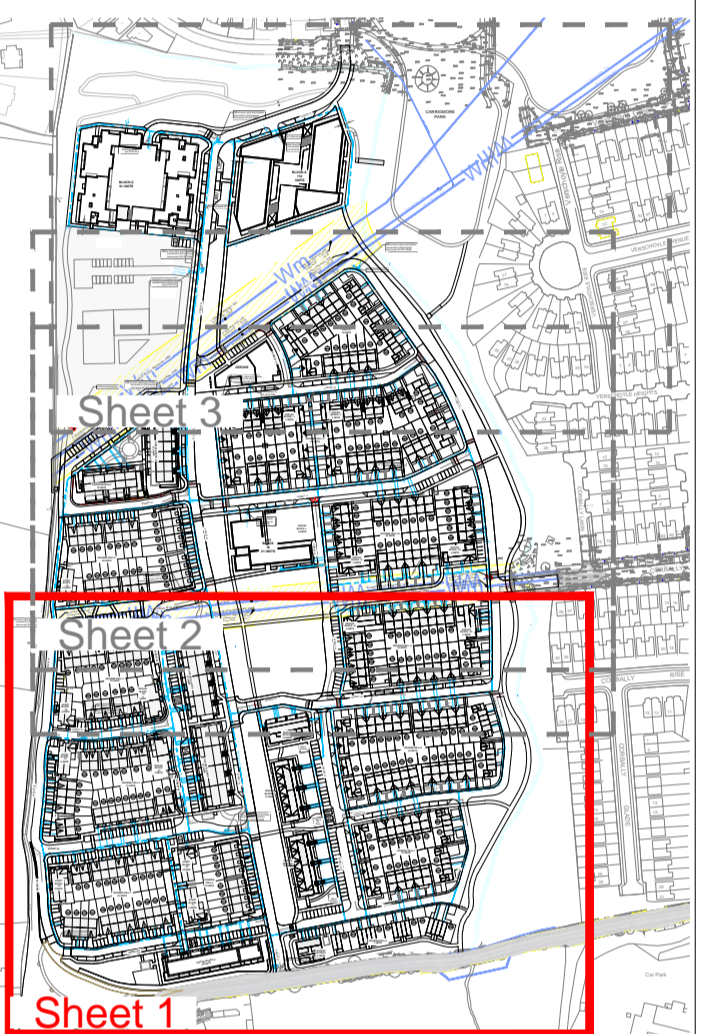


- NOTES:**
1. Read this drawing in conjunction with all other relevant Engineers and Architects drawings.
 2. Do not scale this drawing, use only written dimensions.
 3. Do not set out from this drawing unless specifically confirmed by the Engineers beforehand.
 4. All levels shown are to Main Head datum (mOD).
 5. The contractor is to check all service connections before commencing any site development works.
 6. The Engineer is to be informed of discrepancies that may arise before the contractor commences any site development works, if in doubt - ask!
 7. All watermains to be in accordance with the Irish Water Water Infrastructure Code of Practice (IW CoP) for water Infrastructure and in accordance with the Irish Water Water Infrastructure Standard Details (Rev.3).
 8. All pipe materials to be in accordance with Section 3.9 the IW CoP as follows:
 Pipe Ø 100-150mm - HDPE, MDPE (PE80) and DI
 Pipe Ø 200-300mm - HPPE(PE-100), HDPE, MDPE(PE-80) and DI
 PE pipes to have an SDR rating of 11 or 17 and be compliant with ISEN 1220 Part 1,2 and 3 for plastic pipes and fittings under pressure.
 DI pipes to have a C40 pressure rating, with 16 bar fittings and be in compliance with IS EN 545.
 9. Bulk meter and chamber to be agreed with DLRC before construction commences.
 10. Domestic and non-domestic meters will be supplied and installed by Irish Water.

TYPICAL DETAIL REFERENCES

DETAIL TYPE	IW STANDARD DETAILS (Rev03)
Hydrant Chambers	STD-W-18
Thrust Blocks	STD-W-28
Bulk Water Meter	STD-W-26
Air Valve	STD-W-22
Sluice Valve	STD-W-15
Bedding/backfilling	STD-W-13
Boundary Connection	STD-W-03
Marker Plates	STD-W-27
Scour Valve	STD-W-30

THIS IS A PLANNING DRAWING AND HAS BEEN APPROVED BY THE IRISH WATER CDS SECTION



Key Plan
 A1 Scale 1:5000
 A3 Scale 1:10000

Watermain Legend

- Existing Watermain:
- Proposed Watermain:
- Sluice Valve:
- Bulk water meter:
- Scour Valve:
- Hydrant:
- Air Valve:
- Boundary Box and domestic connection:

REV/DATE DESCRIPTION
ROGER MULLARKEY & ASSOCIATES
 Consulting Structural and Civil Engineers
 Duncreevan, Kilcock, Co.Kildare
 Tel: +353 1 610 3755 Mob: +353 87 232 4917
 E-mail: info@rmullarkey.ie www.rmullarkey.ie

Project
BOHERBOY

Drawing Title
WATERMAIN LAYOUT - Sheet 1
 Architect
MCORM/ DAVEY-SMITH

Date	Drawn By	Scales	Dwg.No.	Stage	Rev
Mar'20	RM	1:500 @ A1	1324B/310	PLANNING	

Watermain GA
 @ A1 - Scale 1:500