

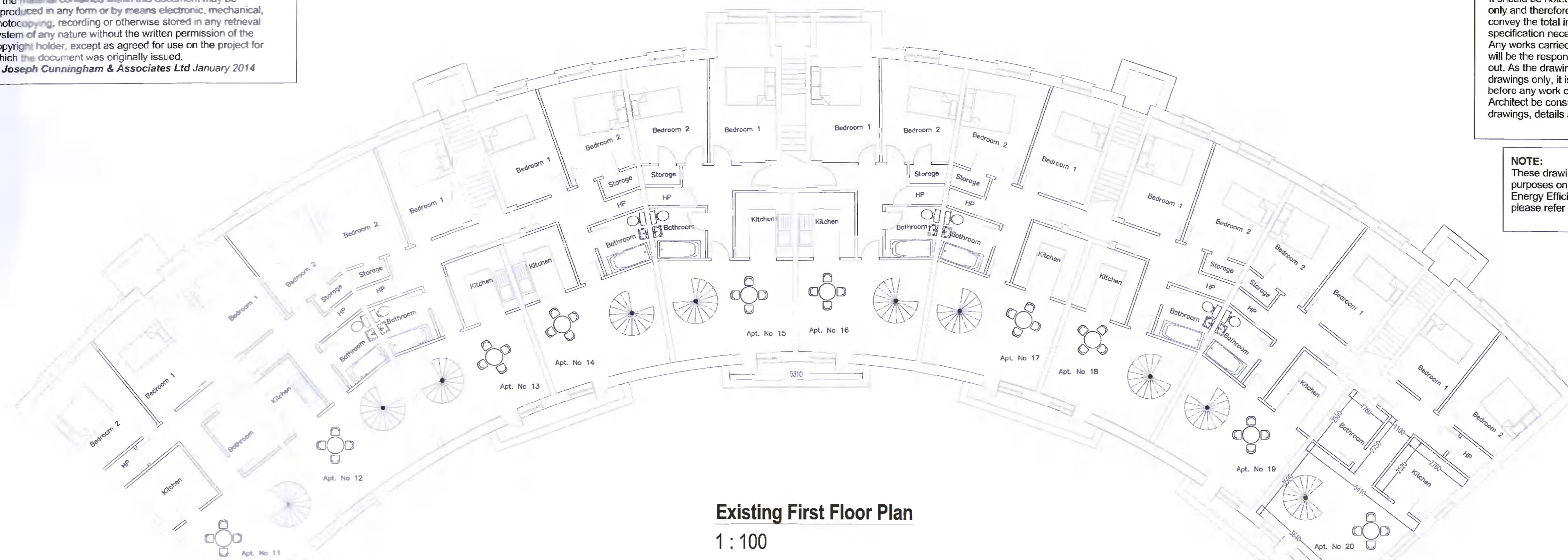
This document is the property of JCA Ltd. The design information contained here is strictly confidential. All rights reserved. No part of the material contained within this document may be reproduced in any form or by means electronic, mechanical, photocopying, recording or otherwise stored in any retrieval system of any nature without the written permission of the copyright holder, except as agreed for use on the project for which the document was originally issued.
© Joseph Cunningham & Associates Ltd January 2014

NOTE:
It should be noted that this is a planning drawing only and therefore is limited in its capacity to convey the total information, details and specification necessary to complete the works. Any works carried out which is not covered here will be the responsibility of the person carrying it out. As the drawings are prepared as planning drawings only, it is strongly recommended that before any work commences the Engineer / Architect be consulted, in order that full working drawings, details and specification be prepared.

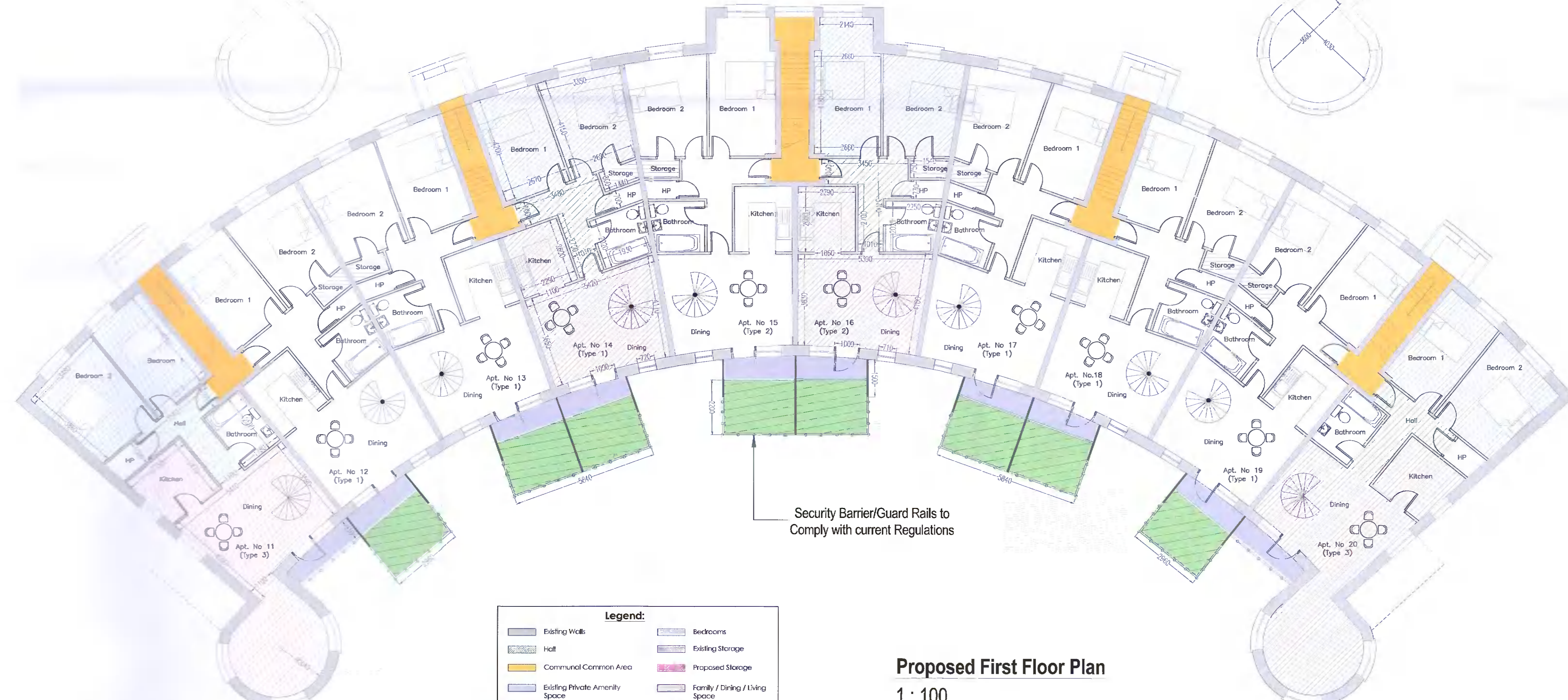
NOTE:
These drawings are for planning permission purposes only. For information in relation to Energy Efficiency and Building Regulations please refer to Working Drawings.

NOTES
This drawing is to be read in conjunction with all Architects drawings & all other Engineers drawings.
All dimensions, areas and construction details to be checked and verified by the building contractor prior to the commencement of the work.
All work to conform to the relevant Irish and British Standards and to the Building regulations (1997-2013).
All levels shown relate to Ordnance Survey Datum at Malin Head.

CPR Note:
All materials used in connection with the works to comply with the Construction Products Regulation (EU) No. 305/2011 and the harmonised technical specification/standards that fall within the remit of the CPR No. 305/2011



Existing First Floor Plan
1 : 100



Legend:

Existing Walls	Bedrooms
Hall	Existing Storage
Communal Common Area	Proposed Storage
Existing Private Amenity Space	Family / Dining / Living Space
Proposed Private Amenity Space	

Proposed First Floor Plan
1 : 100

Apartment 14 - Type 1 - 2Bed/3P Apt-63sqm

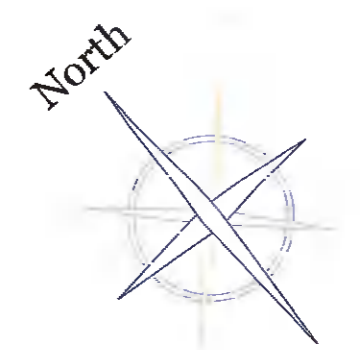
Room Name	Actual Floor Area	Space Recommendations
Apt No. 14		
Private amenity space	8.6 m ²	6 sqm Combined
Storage	1.2 m ²	5 sqm Combined
Storage	3.9 m ²	5 sqm Combined
Hall	6.8 m ²	-
W.C.	4.2 m ²	-
Bedroom 2	11.2 m ²	20.1 sqm Combined
Bedroom 1	11.2 m ²	20.1 sqm Combined
Kitchen/Dining/Living	51.6 m ²	28 sqm Combined
	98.7 m ²	

Apartment 16 - Type 2 - 2Bed/3P Apt-63sqm

Room Name	Actual Floor Area	Space Recommendations
Apt No. 16		
Private amenity space	8.6 m ²	6 sqm Combined
Storage	1.1 m ²	5 sqm Combined
Storage	4.2 m ²	5 sqm Combined
Hall	6.7 m ²	-
W.C.	4.2 m ²	-
Bedroom 2	11.8 m ²	20.1 sqm Combined
Bedroom 1	14.1 m ²	20.1 sqm Combined
Kitchen/Dining/Living	72.2 m ²	28 sqm Combined
	122.9 m ²	

Apartment 20 - Type 3 - 2Bed/3P Apt-63sqm

Room Name	Actual Floor Area	Space Recommendations
Apt No. 20		
Private amenity space	2.5 m ²	6 sqm Combined
Private amenity space	13.0 m ²	6 sqm Combined
Storage	5.0 m ²	5 sqm Combined
Hall	6.5 m ²	-
W.C.	4.5 m ²	-
Bedroom 2	12.6 m ²	20.1 sqm Combined
Bedroom 1	10.7 m ²	20.1 sqm Combined
Kitchen/Dining/Living	65.6 m ²	28 sqm Combined
	120.4 m ²	



Issued for Planning Purposes Only

No. Revision:	Date:
Job Title: C.O.U. of Residential Units at Westpark Crescent Garters Lane, Saggart, Co. Dublin, D24 CA26.	
Client: Suites Hotel Management CLG	Checked By: J.C. Sheet Size: A1
Project Number: C2101 - P05	Scale: 1:100
Scale: 1:100	Date: 14.03.2022
Drawn By: A.S	Head Office: ASPEN HOUSE 76 SEATOWN DUNDEALK CO. LOUTH TEL: 042 9335425 WWW.JCASSOC.NET
Existing & Proposed First Floor Plan	NAVAN OFFICE: 3 CANNON ROW NAVAN CO. MEATH TEL: 046 9076378 E-MAIL: JC@JCASSOC.NET
<p>JOSEPH CUNNINGHAM & ASSOCIATES LTD PROJECT MANAGERS • CHARTERED ENGINEERS • SURVEYORS</p>	