

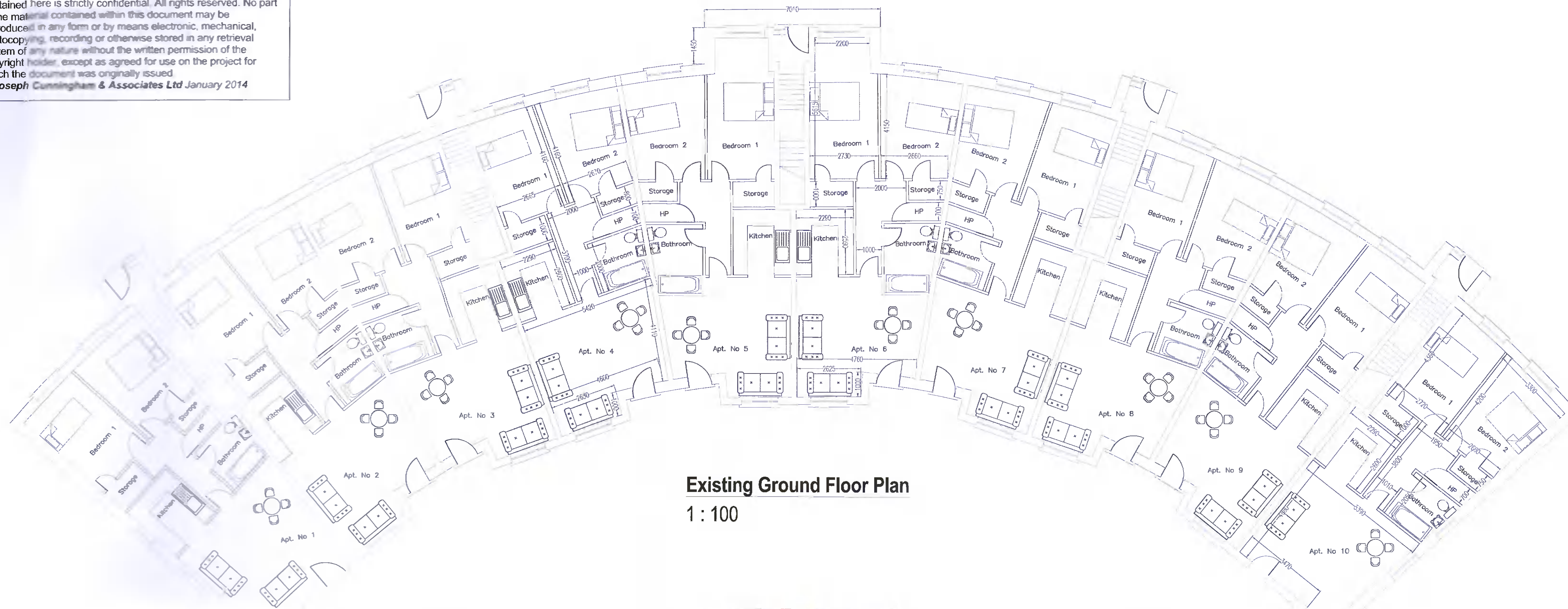
This document is the property of JCA Ltd. The design information contained here is strictly confidential. All rights reserved. No part of the material contained within this document may be reproduced in any form or by means electronic, mechanical, photocopying, recording or otherwise stored in any retrieval system of any nature without the written permission of the copyright holder, except as agreed for use on the project for which the document was originally issued.  
 © Joseph Cunningham & Associates Ltd January 2014

**NOTES**

This drawing is to be read in conjunction with all Architects drawings & all other Engineers drawings.  
 All dimensions, areas and constructional details to be checked and verified by the building contractor prior to the commencement of the work.  
 All work to conform to the relevant Irish and British Standards and to the Building regulations (1997-2013).  
 All levels shown relate to Ordnance Survey Datum at Malin Head.

**CPR Note:**  
 All works to be carried out using proper materials which are fit for the use they are intended and for the condition in which they are to be used.

All materials used in connection with the works to comply with the Construction Products Regulation (EU) No. 305/2011 and the harmonised technical specification/standards that fall within the remit of the CPR No. 305/2011

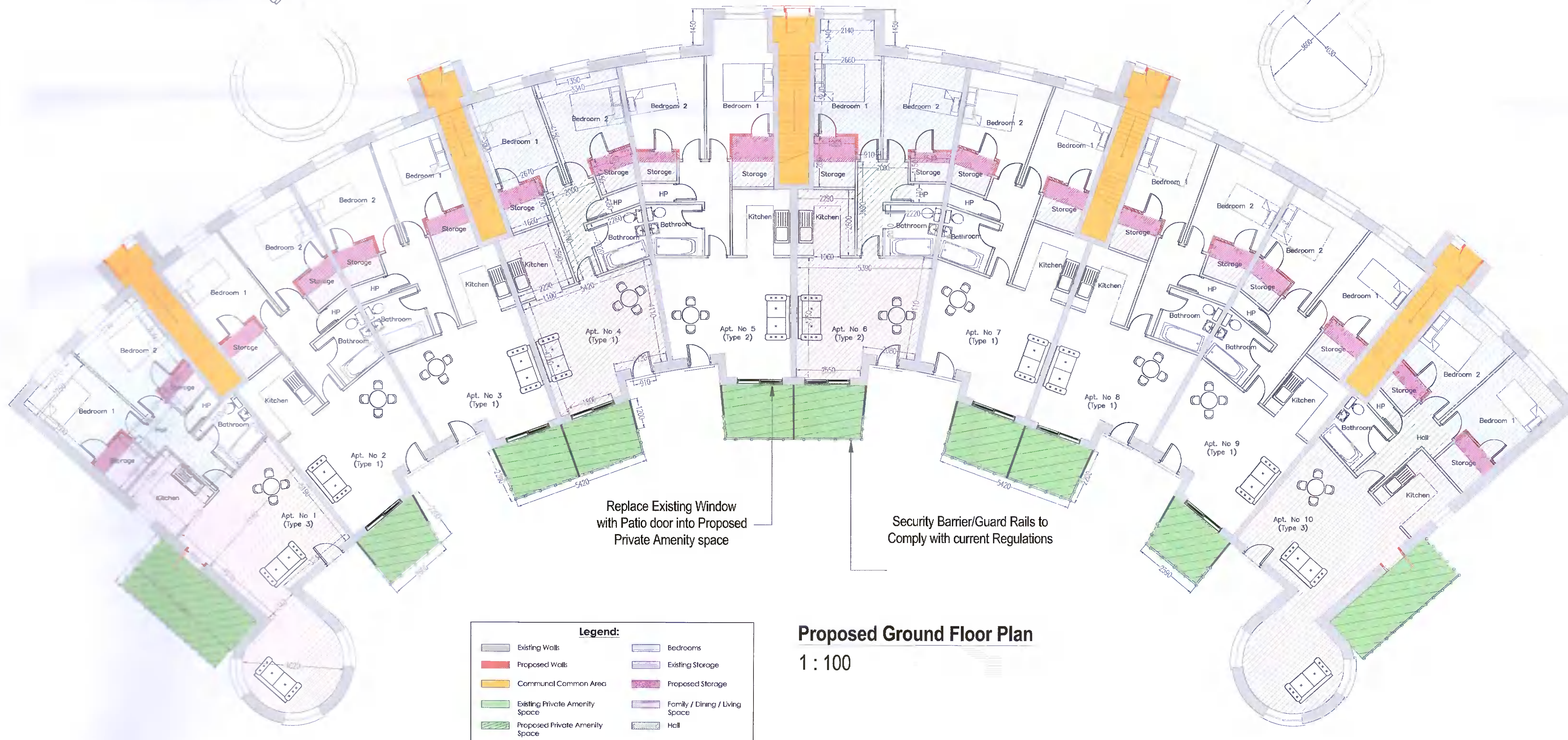


**Existing Ground Floor Plan**  
 1 : 100

Apartment 4 - Type 1 - 2Bed/3P Apt-63sqm		
Room Name	Actual Floor Area	Space Recommendations
Apt No. 4		
Private amenity space	6.0 m <sup>2</sup>	6 sqm Combined
Storage	2.2 m <sup>2</sup>	5 sqm Combined
Storage	2.8 m <sup>2</sup>	5 sqm Combined
Hall	5.2 m <sup>2</sup>	-
WC	4.3 m <sup>2</sup>	-
Bedroom 2	10.8 m <sup>2</sup>	20.1 sqm Combined
Bedroom 1	10.1 m <sup>2</sup>	20.1 sqm Combined
Kitchen/Dining/Living	28.0 m <sup>2</sup>	28 sqm Combined
	69.4 m <sup>2</sup>	

Apartment 6 - Type 2 - 2Bed/3P Apt-63sqm		
Room Name	Actual Floor Area	Space Recommendations
Apt No. 6		
Private amenity space	6.0 m <sup>2</sup>	6 sqm Combined
Storage	3.3 m <sup>2</sup>	5 sqm Combined
Storage	1.7 m <sup>2</sup>	5 sqm Combined
Hall	5.4 m <sup>2</sup>	-
WC	5.5 m <sup>2</sup>	-
Bedroom 2	11.1 m <sup>2</sup>	20.1 sqm Combined
Bedroom 1	12.4 m <sup>2</sup>	20.1 sqm Combined
Kitchen/Dining/Living	28 m <sup>2</sup>	28 sqm Combined
	73.4 m <sup>2</sup>	

Apartment 10 - Type 3 - 2Bed/3P Apt-63sqm		
Room Name	Actual Floor Area	Space Recommendations
Apt No. 10		
Private amenity space	12.0 m <sup>2</sup>	6 sqm Combined
Storage	2.8 m <sup>2</sup>	5 sqm Combined
Storage	2.2 m <sup>2</sup>	5 sqm Combined
Hall	5.3 m <sup>2</sup>	-
WC	4.4 m <sup>2</sup>	-
Bedroom 2	10.5 m <sup>2</sup>	20.1 sqm Combined
Bedroom 1	10.2 m <sup>2</sup>	20.1 sqm Combined
Kitchen/Dining/Living	43.4 m <sup>2</sup>	28 sqm Combined
	90.8 m <sup>2</sup>	



Replace Existing Window with Patio door into Proposed Private Amenity space

Security Barrier/Guard Rails to Comply with current Regulations

**Proposed Ground Floor Plan**  
 1 : 100

**Legend:**

Existing Walls	Bedrooms
Proposed Walls	Existing Storage
Communal Common Area	Proposed Storage
Existing Private Amenity Space	Family / Dining / Living Space
Proposed Private Amenity Space	Hall

**Issued for Planning Purposes Only**

No. Provision: \_\_\_\_\_ Date: \_\_\_\_\_

Job Title: **C.O.U. of Residential Units at Westpark Crescent Garters Lane, Saggart, Co. Dublin, D24 CA26.**

Client: **Suites Hotel Management CLG**

Checked By: J.C. Sheet Size: A1  
 Project Number: C2101 - P04  
 Scale: 1:100  
 Date: 14.03.2022

Drawn By: A.S.  
 HEAD OFFICE  
 ASPEN HOUSE  
 7/6 SEATOWN  
 DUNDALK  
 CO. LOUTH  
 TEL: 042 9335425  
 WWW.JCASSOC.NET

NAVAN OFFICE  
 51 CANNON ROW  
 NAVAN  
 CO. MEATH  
 TEL: 046 9078378  
 E-MAIL: [ELLEN@JCAASSOC.NET](mailto:ELLEN@JCAASSOC.NET)

**JCA** **ENGINEERS IRELAND**  
 Cert. No. 1776  
**JOSEPH CUNNINGHAM & ASSOCIATES LTD**  
 PROJECT MANAGERS • CHARTERED ENGINEERS • SURVEYORS