

- NOTE 1: MANHOLE COVER LEVELS ARE APPROXIMATE. ACTUAL COVER LEVELS SHOULD MATCH SURROUNDING FINISHED GROUND LEVELS U.N.O.
- NOTE 2: PIPES WITH LESS COVER THAN
- 600mm FOR GRASSED AREAS
  - 900mm FOR FOOTPATHS
  - 1200mm FOR ROADS
- NEED TO BE ENCASED IN A MIN. 150mm THK CONCRETE SURROUND
- NOTE 3: FOR TYPICAL DRAINAGE DETAILS REFER TO DRAWING C-018
- NOTE 4: ALL 110mm PVC S.W. SEWER PIPES TO HAVE A MINIMUM GRADIENT OF 1 IN 80
- NOTE 5: REMAINING OPEN ENDS OF EXISTING SEWER PIPE FOLLOWING DIVERSIONS / DECOMMISSIONING ARE TO BE PLUGGED WITH CONCRETE

- GENERAL NOTES:**
1. FOR STANDARD DOBA NOTES REFER TO DRAWING LCC-DOB-XX-DR-S00.1 & S00.2
  2. THIS DRAWING IS TO BE READ IN CONJUNCTION WITH ALL OTHER RELEVANT ARCHITECTS & ENGINEERS DRAWINGS AND SPECIFICATIONS
  3. USE FIGURED DIMENSIONS ONLY. DO NOT SCALE
  4. THE CONTRACTOR SHALL VERIFY ALL DIMENSIONS AND LEVELS WITH ARCHITECTURAL DRAWINGS PRIOR TO START OF CONSTRUCTION. ANY DISCREPANCIES TO BE NOTIFIED TO THE ENGINEER & ARCHITECT FOR RESOLUTION



**Note!**  
REFER TO DRAWING DOBA-C-0014 FOR TYPICAL ATTENUATION TANK DETAILS

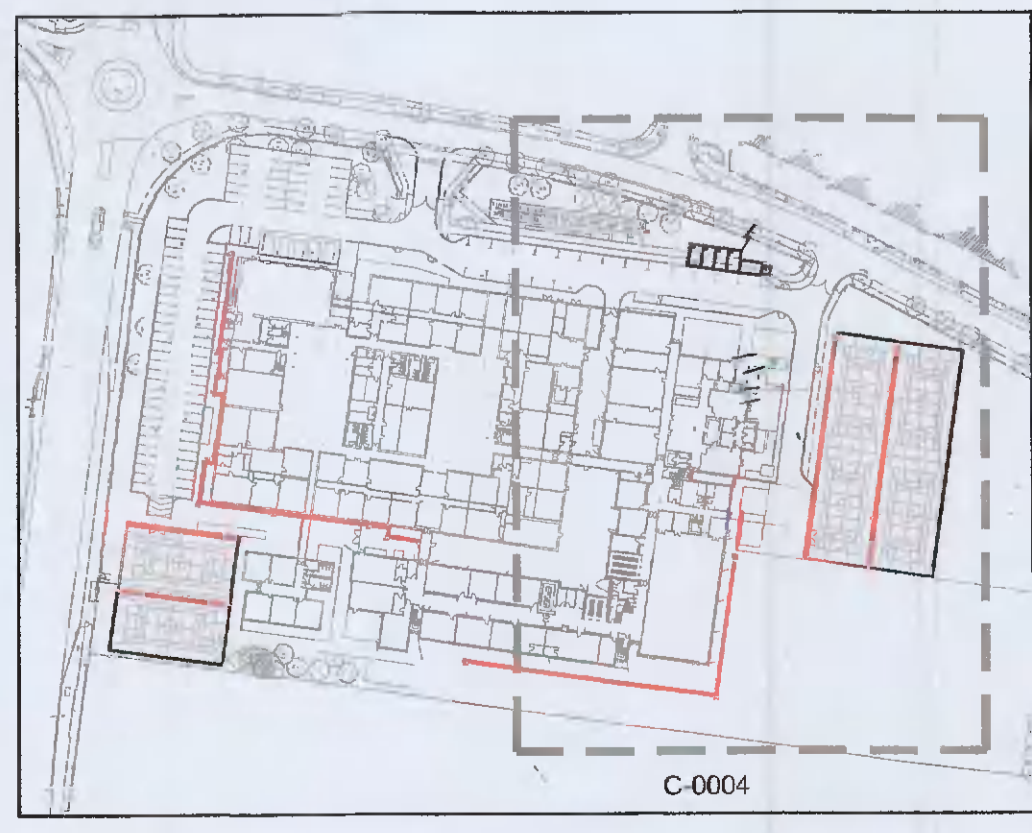
**Note!**  
REFER TO ARCHITECTS DRAWINGS & SPECIFICATIONS FOR ALL LOCAL DRAINAGE POP UPS & CONNECTION ROUTES TO MAIN DRAINAGE SYSTEMS INDICATED ON DOBA ENGINEERING DRAWINGS

- NOTES:**
- REFER TO SURVEY DRAWINGS FOR EXISTING SERVICES LAYOUTS AND MANHOLE INFORMATION
  - DECOMMISSIONING & REMOVAL OF SERVICES TO TAKE PLACE FOLLOWING DEPARTING OF SCHOOL FROM EFFECTED BUILDINGS U.N.O.
  - WORKS TAKING PLACE OUTSIDE OF DESIGNATED CONTRACTORS SITE ARE TO BE CARRIED OUT DURING SCHOOL HOLIDAY PERIODS
  - ALL EXISTING SURFACES TO BE REINSTATE FOLLOWING DIVERSION OF SERVICES/CONSTRUCTION OF NEW SERVICES AT PHASE 0

- PIPE SIZES:**
- ALL PIPE RUNS BETWEEN MANHOLES TO BE 2250 U.N.O
  - ALL PIPE RUNS BETWEEN INSPECTION CHAMBERS TO BE 1500 U.N.O
  - ALL PIPE RUNS BETWEEN AJs AND FROM RAINWATER PIPES OR GULLIES TO BE 1100 U.N.O

**LEGEND**

	EXISTING STORM WATER SEWER
	PROPOSED STORM WATER SEWER
	PROPOSED RAINWATER HARVESTING NETWORK
	PROPOSED LOCAL STORM WATER DRAINAGE TO ARCHITECTS DETAILS
	PROPOSED ACO CHANNEL DRAIN
	SMH PROPOSED STORM WATER MH
	SIC PROPOSED INSPECTION CHAMBER
	RG PROPOSED ROAD GULLY
	SAJ PROPOSED STORM WATER AJ
	RWP PROPOSED RAINWATER PIPE
	PROPOSED CORRUGATED LAND DRAIN



**KEY PLAN**  
Scale N.T.S.

**ISSUED FOR PLANNING**

S4.P01	ISSUED FOR PLANNING	15.02.2022	TN	RK
Rev.	Note	Date	Drawn	Check
		UNIT 5C ELM HOUSE MILLENNIUM PARK NAAS CO. KILDARE		PHONE: +353 45 884 042  INFO@DOBRIEN-ENGINEERS.IE WWW.DOBRIEN-ENGINEERS.IE
Client: DUBLIN & DUN LAOGHAIRE ETB				
Project: LUCAN COMMUNITY COLLEGE				
Drawing Title: SURFACE WATER DRAINAGE SHEET 2 OF 2				
Drawn By: RR	Checked By: RK	Approved By: DOB	Date: MAY '17	Scale: 1:250
Project Number: DOBA1446	Drawing Number: LCC-DOB-XX-SI-DR-C-0004	Status Code: S4	Rev Number: P01	Sheet Size: A1