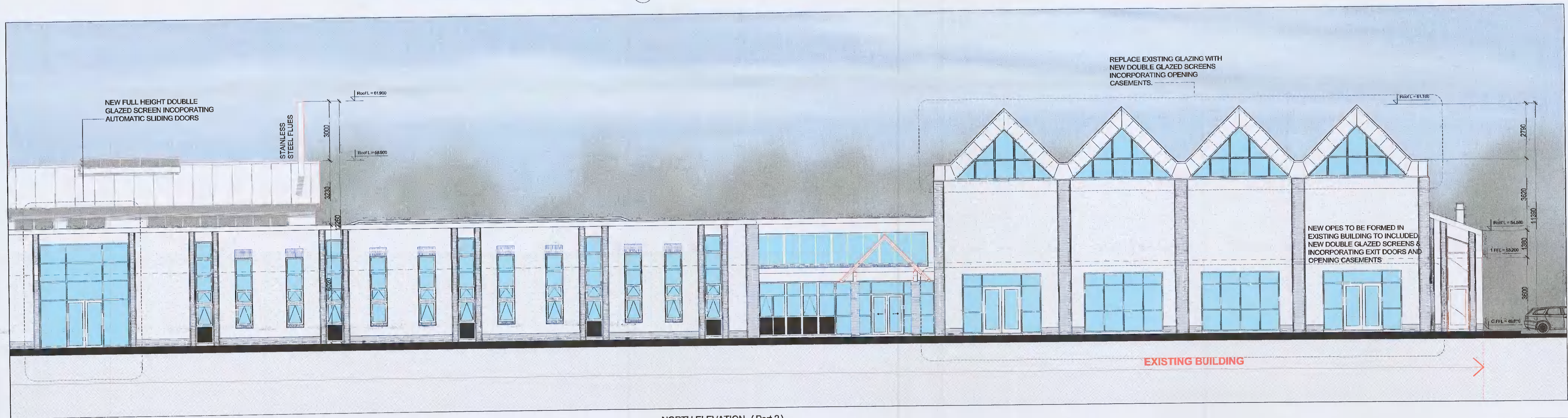


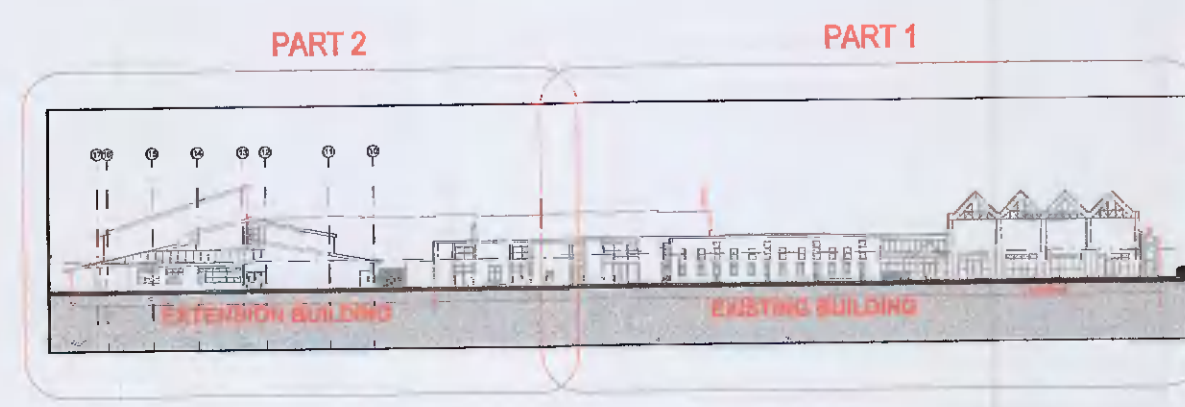
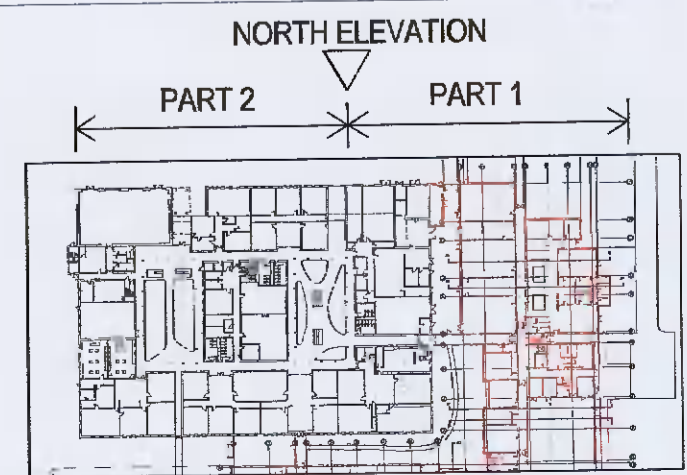
01 NORTH ELEVATION (Part 1)



02 NORTH ELEVATION (Part 2)

NOTE THIS DRAWING IS UNCHANGED FROM PREVIOUS PLANNING APPLICATION
 REFERENCE NUMBER SD17A/0164
 DECISION ORDER 0794
 FINAL GRANT ORDER 0952

| REV. | DATE | DRN BY | CKD BY | APP BY | DESCRIPTION |
|------|------|--------|--------|--------|-------------|
| | | | | | |
| | | | | | |
| | | | | | |
| | | | | | |
| | | | | | |
| | | | | | |
| | | | | | |
| | | | | | |
| | | | | | |



JOB TITLE: LUCAN COMMUNITY COLLEGE
 CLIENT: ETB DDL
 DRAWING: ELEVATION (Sheet 4 of 4)

| | |
|----------|--------------|
| DWG. NO. | 153 |
| REF. | 1400-153 |
| JOB NO. | 1400 |
| SCALE | 1:100 |
| DATE | January 2022 |
| STATUS | Planning |
| DRN BY | AM |
| CKD BY | PF |

WA WEJCHERT ARCHITECTS
 23 LOWER BAGGOT STREET, DUBLIN 2, D02 K009, IRELAND
 T: +353 (0)1 661 0321 E: mail@wejchert.ie W: www.wejchert.ie