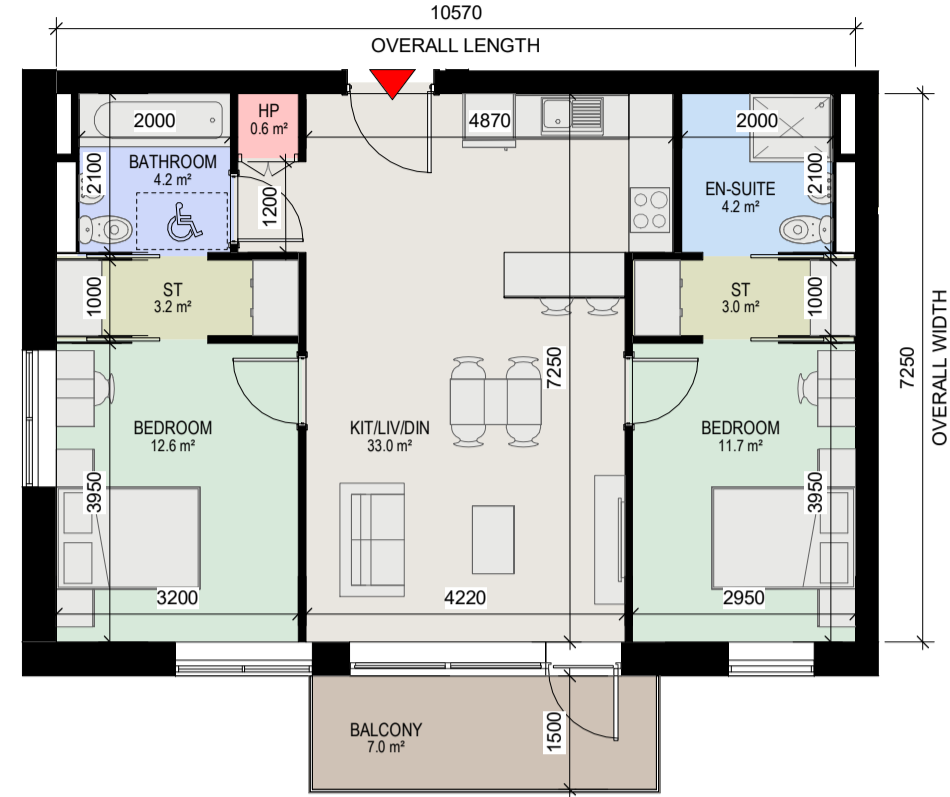
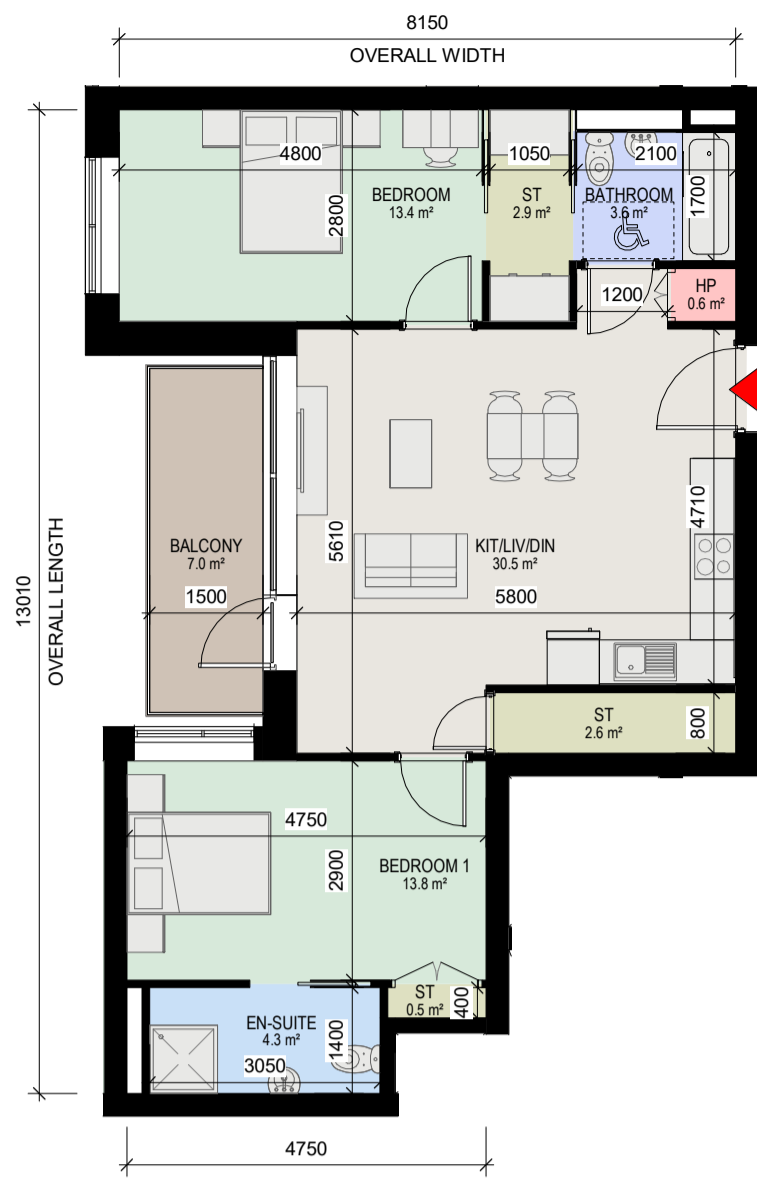


PLANNING DRAWING



1 Apartment Type 2AK

1 : 100

- 2 BED, 4 PERSON APARTMENT
- GROSS INTERNAL AREA (GIA) : 75.69 sqm

2 Apartment Type 2AL

1 : 100

- 2 BED, 4 PERSON APARTMENT
- GROSS INTERNAL AREA (GIA) : 76.63 sqm

3 Apartment Type 2AM

1 : 100

- 2 BED, 4 PERSON APARTMENT
- GROSS INTERNAL AREA (GIA) : 82.96 sqm

4 Apartment Type 2AN

1 : 100

- 2 BED, 4 PERSON APARTMENT
- GROSS INTERNAL AREA (GIA) : 83.19 sqm

| APARTMENT ROOM LEGEND | |
|-----------------------|---------------------------|
| | BEDROOM |
| | KITCHEN / DINING / LIVING |
| | BATHROOM |
| | EN-SUITE |
| | STORE |
| | BALCONY |
| | ENTRANCE / HALL |
| | HP (HOT PRESS) |
| | PAS |

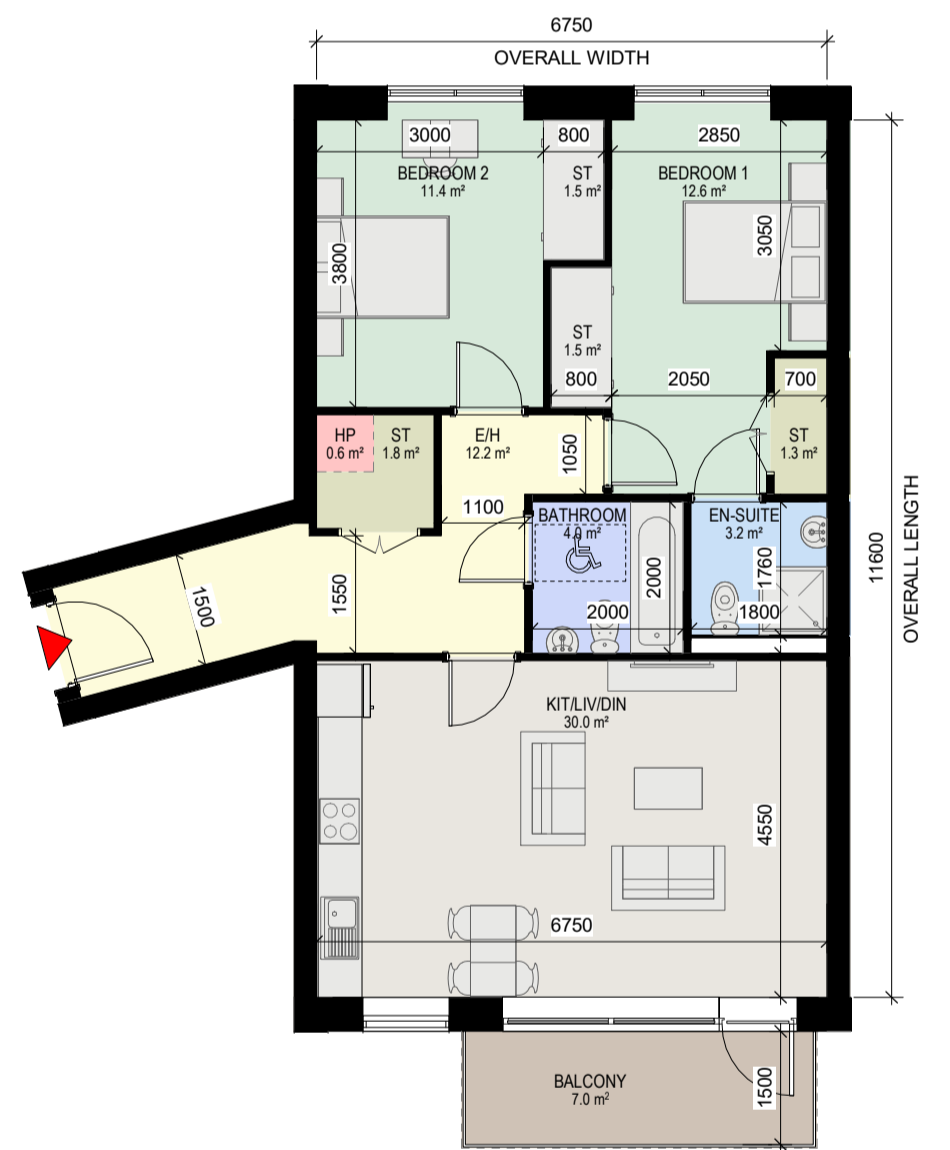
| SYMBOL LEGEND | |
|---------------|-----------------------------|
| | APARTMENT ENTRANCE |
| | 1200mm x750mm TURNING SPACE |



5 Apartment Type 2AO

1 : 100

- 2 BED, 4 PERSON APARTMENT
- GROSS INTERNAL AREA (GIA) : 83.45 sqm



6 Apartment Type 2AP

1 : 100

- 2 BED, 4 PERSON APARTMENT
- GROSS INTERNAL AREA (GIA) : 83.44 sqm

| Rev | Description | Date | Dr | App by |
|-----|---------------------------------|----------|----|--------|
| P02 | Full Application Drawings | 14/03/22 | VF | WP |
| P01 | Draft Full Application Drawings | 20/01/22 | VF | WP |

Project Stage

PLANNING

Client:
Steeplefield Limited,

Project:
Greenhills Road, Walkinstown,
Dublin 12

Drawing Title:
PROPOSED APARTMENT TYPES
2 BED TYPES

| Drawn | Checked | Paper Size | Scale | Date |
|-------|---------|------------|------------|----------|
| VF | WP | A1 | 1 : 100@A1 | 12/20/21 |

| Project No. | Drawing No. | Classification | Revision |
|-------------|-------------|----------------|----------|
| PE18001 | 002195 | | P02 |

File Name:
PE18001-CWO-ZZ-ZZ-DR-A-002195

Status:
S3 ISSUED FOR PLANNING