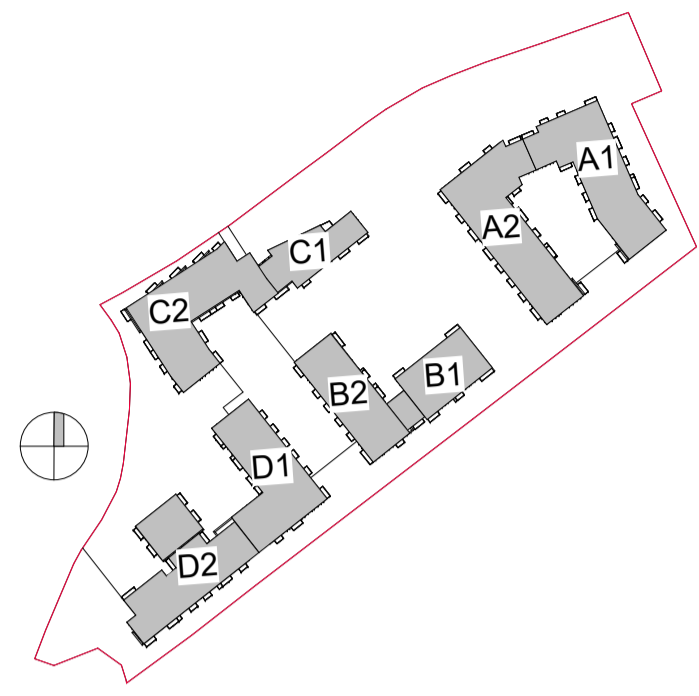


# PLANNING DRAWING



**AREA TYPES**

- 1 BED
- 2 BED (4P)
- 2 BED (3P)
- 3 BED
- BIKE STORE
- CIRCULATION
- COMMERCIAL
- COMMUNAL AMENITY
- PLANT ROOM
- SERVICES
- CRECHE

Gross Internal Area-Level 09	
Level	Area
A2-09	414 m <sup>2</sup>
B1-09	555 m <sup>2</sup>
C1-09	412 m <sup>2</sup>
D1-09	463 m <sup>2</sup>
<b>Grand total: 4</b>	<b>1843 m<sup>2</sup></b>

Rev	Description	Date	Dr by	App by
P08	Full Application Drawings	14/03/22	VF	WP
P07	Draft Full Application Drawings	20/01/22	VF	WP
P06	Draft Full Application Drawings	16/12/21	VF	WP
P05	Pre-Application Submission	25/05/21	VF	WP
P04	Draft Pre-Application Drawings	06/05/21	VF	WP
P03	Draft Drawings for Information	18/03/21	VF	WP
P02	Issued for Information	01/03/21	VF	WP
P01	Ground & Typical Floor issued for Comment	03/02/21	VF	WP

## PLANNING

Client:  
Steeplefield Limited,

Project:  
Greenhills Road, Walkinstown,  
Dublin 12

Drawing Title:  
SITE GA PLAN - LEVEL 09

Drawn	Checked	Paper Size	Scale	Date
VF	WP	A1	1:500@A1	02/26/21

Project No.	Drawing No.	Classification	Revision
PE18001	001109		P08

File Name:  
PE18001-CWO-ZZ-09-DR-A-001109

Status:  
**S3 ISSUED FOR PLANNING**



No.1 Sarsfield Quay, Dublin 7, D07 R9FH  
t: 01 518 0170 e: admin@cwoarchitects.ie  
Dublin | Cork | Galway | London | UK & Europe +  
www.cwoarchitects.ie

Please consider the environment before printing this sheet



**1** SITE GA PLAN - LEVEL 09  
1:500

**Schedule Accommodation-Block A-Level 09**

Name	Area	Area Type
A2-0901	66 m <sup>2</sup>	2 BED (3P)
A2-0902	78 m <sup>2</sup>	2 BED
A2-0903	73 m <sup>2</sup>	2 BED
A2-0904	46 m <sup>2</sup>	1 BED
A2-0905	46 m <sup>2</sup>	1 BED
<b>Grand total: 5</b>	<b>310 m<sup>2</sup></b>	

**Schedule Accommodation-Block B-Level 09**

Name	Area	Area Type
B1-0901	85 m <sup>2</sup>	2 BED
B1-0902	108 m <sup>2</sup>	3 BED
B1-0903	108 m <sup>2</sup>	3 BED
B1-0904	54 m <sup>2</sup>	1 BED
B1-0905	85 m <sup>2</sup>	2 BED
<b>Grand total: 5</b>	<b>441 m<sup>2</sup></b>	

**Schedule Accommodation-Block C-Level 09**

Name	Area	Area Type
C1-0901	47 m <sup>2</sup>	1 BED
C1-0902	74 m <sup>2</sup>	2 BED
C1-0903	79 m <sup>2</sup>	2 BED
C1-0904	104 m <sup>2</sup>	3 BED
<b>Grand total: 4</b>	<b>303 m<sup>2</sup></b>	

**Schedule Accommodation-Block D-Level 09**

Name	Area	Area Type
D1-0901	77 m <sup>2</sup>	2 BED
D1-0902	83 m <sup>2</sup>	2 BED
D1-0903	46 m <sup>2</sup>	1 BED
D1-0904	46 m <sup>2</sup>	1 BED
D1-0905	46 m <sup>2</sup>	1 BED
D1-0906	50 m <sup>2</sup>	1 BED
<b>Grand total: 6</b>	<b>349 m<sup>2</sup></b>	