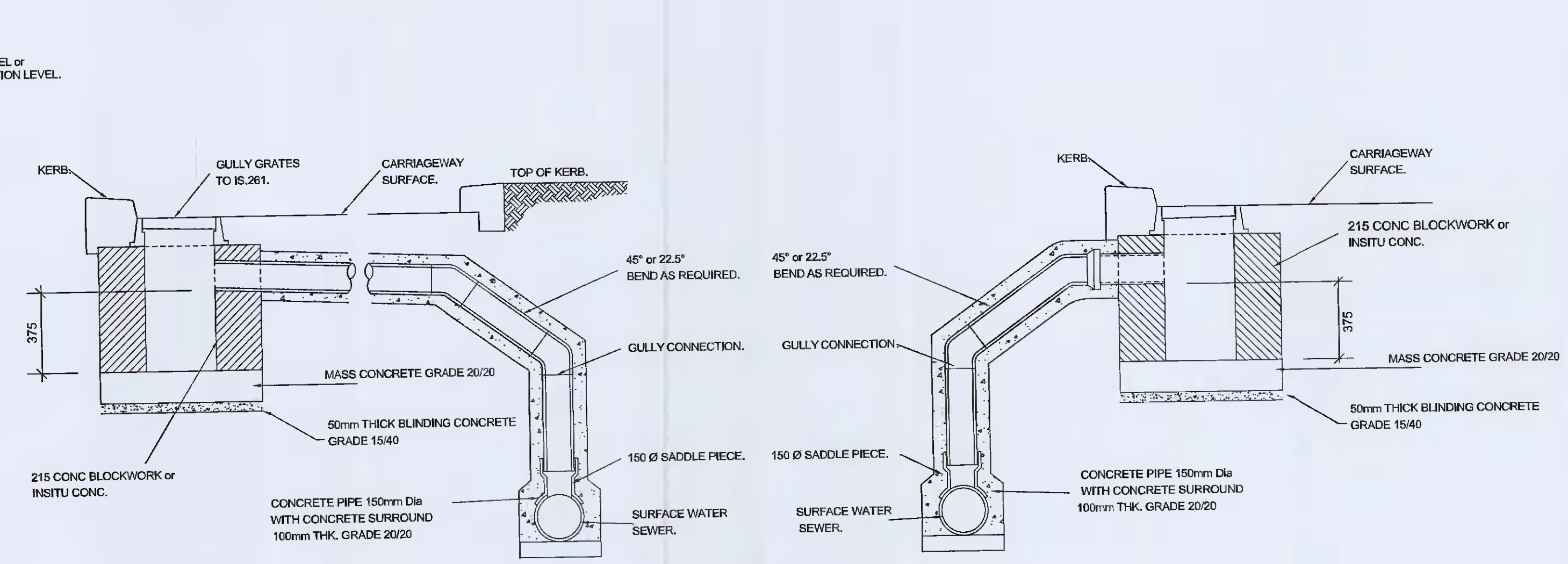
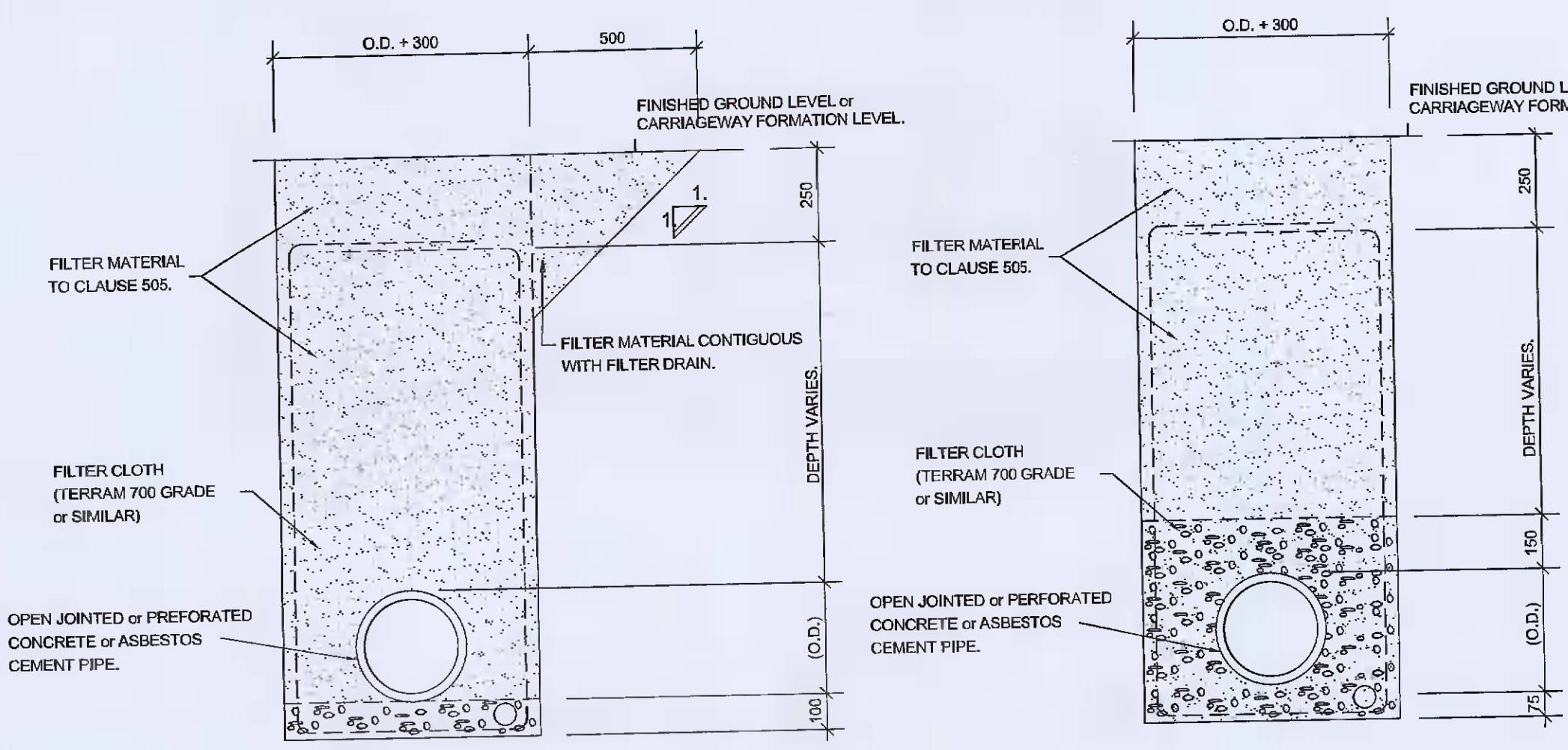


GENERAL NOTES

1. This Drawing is to be read in conjunction with all the Engineer's and Architect's Drawings and Specifications.
2. Do Not Scale. Use Figure'd Dimensions Only. Refer to the Architects Drawings for all setting out dimensions.
3. All Dimensions To Be Checked on-site. Engineer and Architect to be informed immediately of any discrepancies between the condition/ situation on site and that assumed on the Project Design Drawings.
4. IF IN DOUBT ASK.



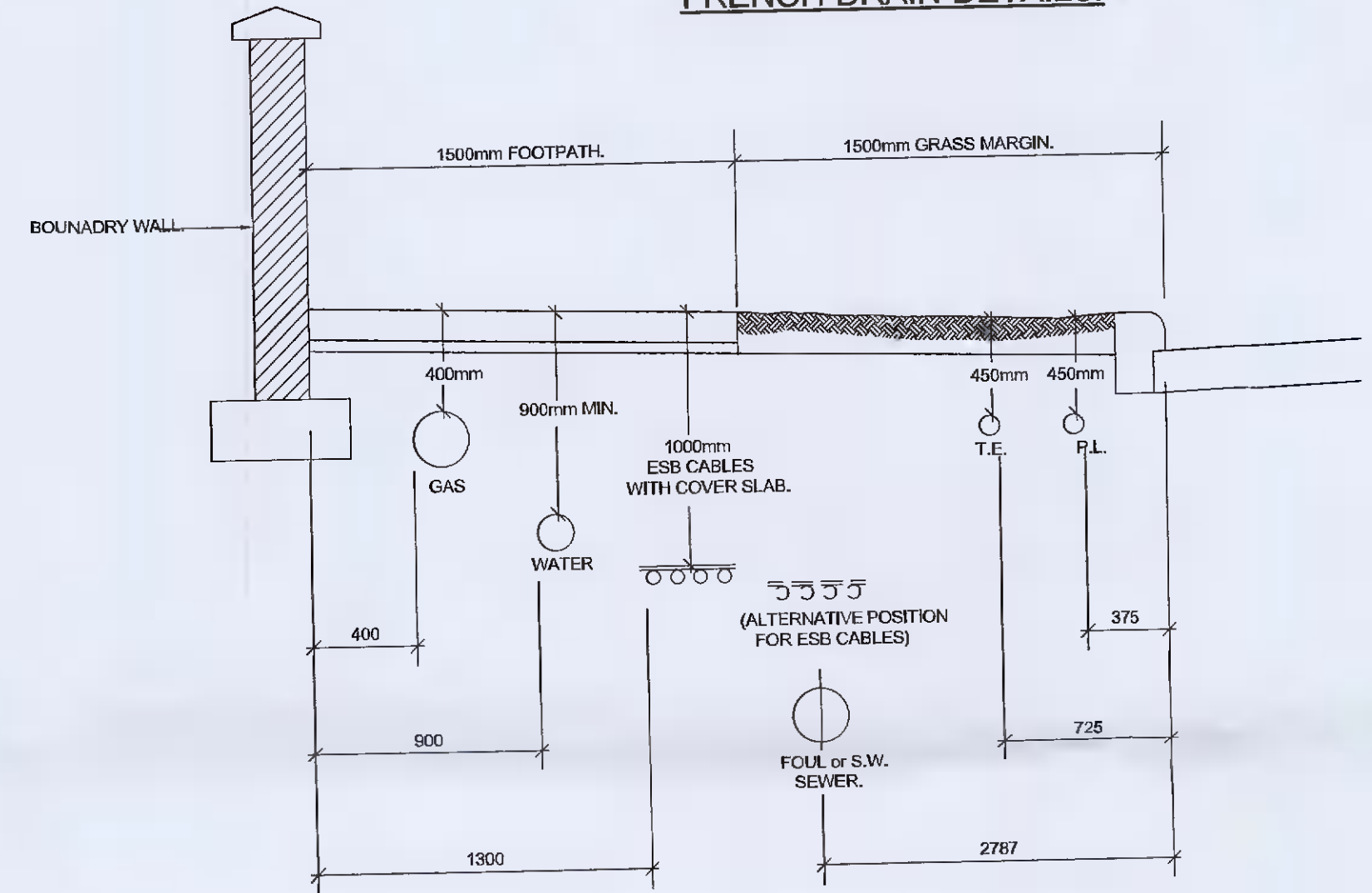
DETAIL-A.

DETAIL-B.

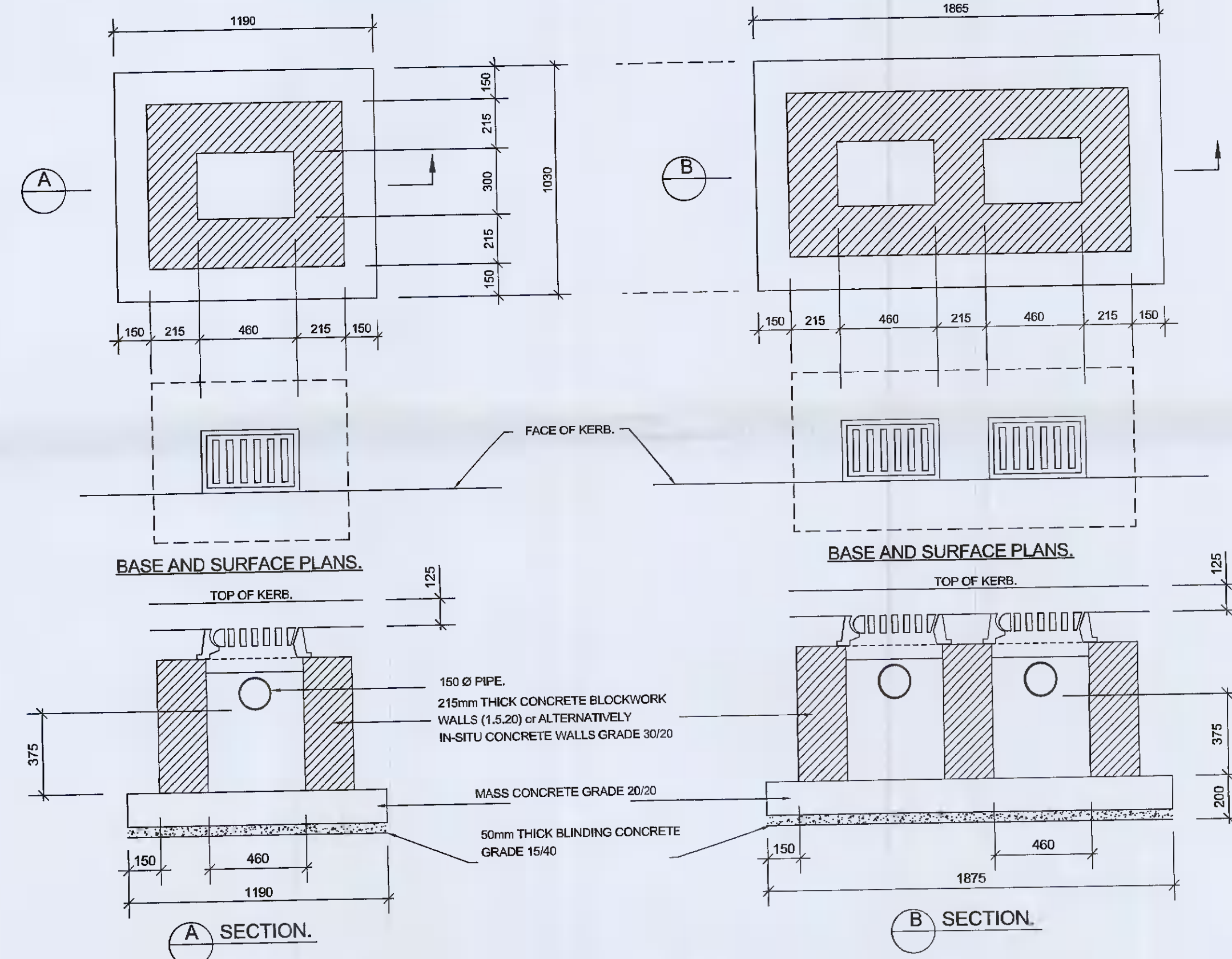
GULLY PIT TO SW. SEWER ON OPPOSITE SIDE OF CARRAGEWAY.

GULLY PIT TO SW. SEWER ON SAME SIDE OF CARRAGEWAY.

FRENCH DRAIN DETAILS.



TYPICAL LAYOUT OF SERVICES IN FOOTPATH/GRASS MARGIN.



ROAD GULLY.

DOUBLE ROAD GULLY.

P12	ISSUED FOR PLANNING	ECM	24/02/2022
Rev.	Description	By	Date
Drawn By / Date	SCM	FEBRUARY 2022	Approved for Construction by:
Design Chk / Date	SCE	FEBRUARY 2022	
Design Chk / Date			

* Refer to Suitability "S4" for Original Signatures

SC SEXTON CONSULTING
 The Five Roads, Jordanstown, Lusk,
 North County Dublin, Ireland, K45 N774
 t: +353-1-8490999, e: connect@scecg.ie

Client: **CLONDALKIN RUGBY FOOTBALL CLUB LTD**

Architect: **CUMMINS & VOORTMAN ARCHITECTS**

Project: **CRFC KINGSWOOD RELOCATION
 KINGSWOOD FARM MONEENALION
 COMMONS LOWER CLONDALKIN D22**

Title: **SITE DEVELOPMENT WORKS
 STANDARD GULLY DETAILS**

Job No. **SC04/21020** Creation **FEBRUARY 2022**

Project Code: **CRFC - SC - SD - XX - DR - C - 2007**

Suitability Code: **S2** Revision ID: **P12**

Status: **PLANNING**

THE DRAWING IS COPYRIGHT © ALL RIGHTS RESERVED. NO PART OF THIS DRAWING MAY BE REPRODUCED, COPIED OR IN ANY MANNER, WITHOUT THE PRIOR WRITTEN PERMISSION FROM SEXTON CONSULTING.