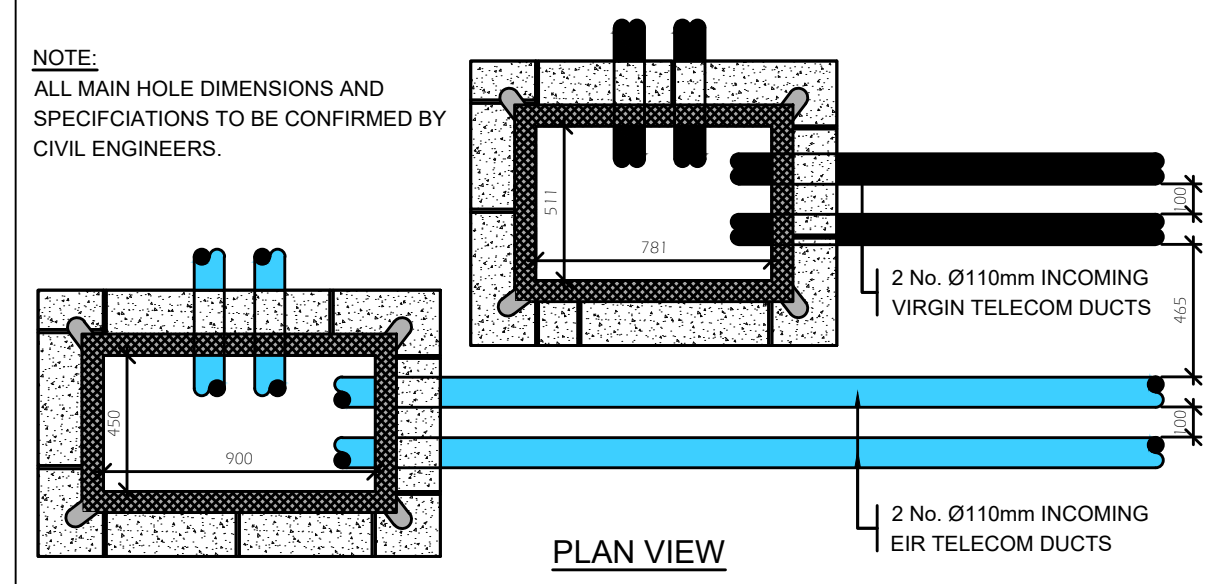


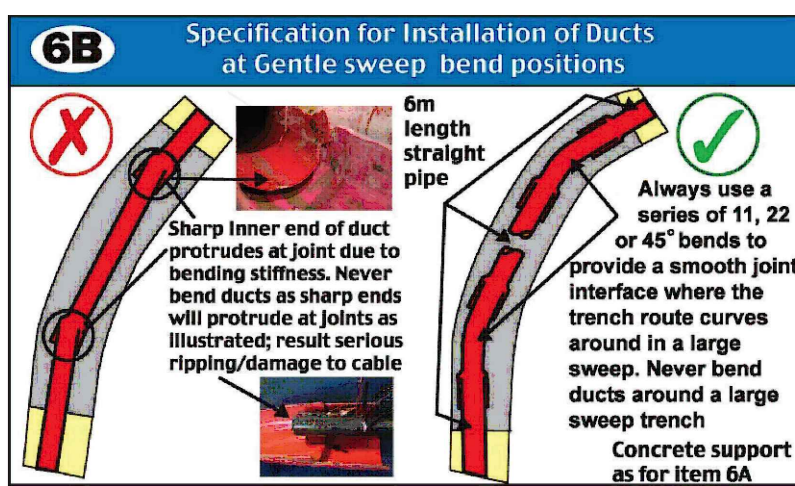
DRAWING NOTES:

- DUCTING SHALL COMPLY WITH BS EN 50086-1-2-3-4 LATEST EDITION & SHALL BE SINGLE WALL, COLOURED RED & MANUFACTURED FROM HIGH DENSITY POLYETHYLENE. THE NOMINAL EXTERNAL DIAMETER OF THE DUCT SHALL BE 107mm WITH A MINIMAL WALL THICKNESS OF 5mm. EACH LENGTH OF DUCT SHALL BE STAMPED WITH THE WORDS "PUBLIC LIGHTING", OR ALTERNATIVELY, "STREET LIGHTING", IN 18mm BLACK LETTERING AT 90 DEGREES, AT ONE METRE INTERVALS. DUCT SHALL BE LAID WITH THIS LEGEND FACING UPWARDS. DUCT SHALL BE LAID IN A STRAIGHT LINE CLOSE TO THE LINE OF THE COLUMN LOCATIONS & SHALL CONTAIN A CONTINUOUS DRAW WIRE OF 8KN STRENGTH.
- A MINIMUM DEPTH OF 450mm COVER IS REQUIRED IN URBAN PATHWAYS & A MINIMUM OF 600mm COVER IS REQUIRED FOR GRASS MARGINS, PEDESTRIAN WAYS, LANEWAYS & GATEWAY ENTRANCES & A MINIMUM DEPTH OF 750mm IS REQUIRED AT ROAD CROSSINGS OR IN CARRIAGEWAYS.
- ALL EQUIPMENT TO BE SUITABLY IP RATED FOR THE ENVIRONMENT THEY ARE BEING INSTALLED.
- FOR SCHEDULES OF EQUIPMENT SEE SPECIFICATION.
- THE COMPLETE INSTALLATION TO BE CO-ORDINATED WITH ALL OTHER SERVICES.

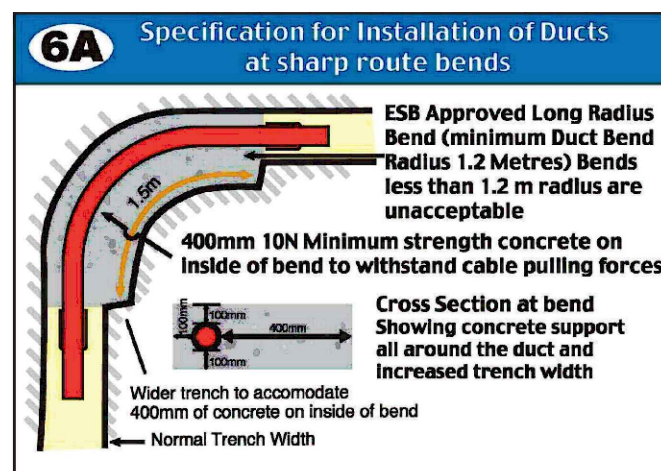
NOTE:
ALL MAIN HOLE DIMENSIONS AND SPECIFICATIONS TO BE CONFIRMED BY CIVIL ENGINEERS.



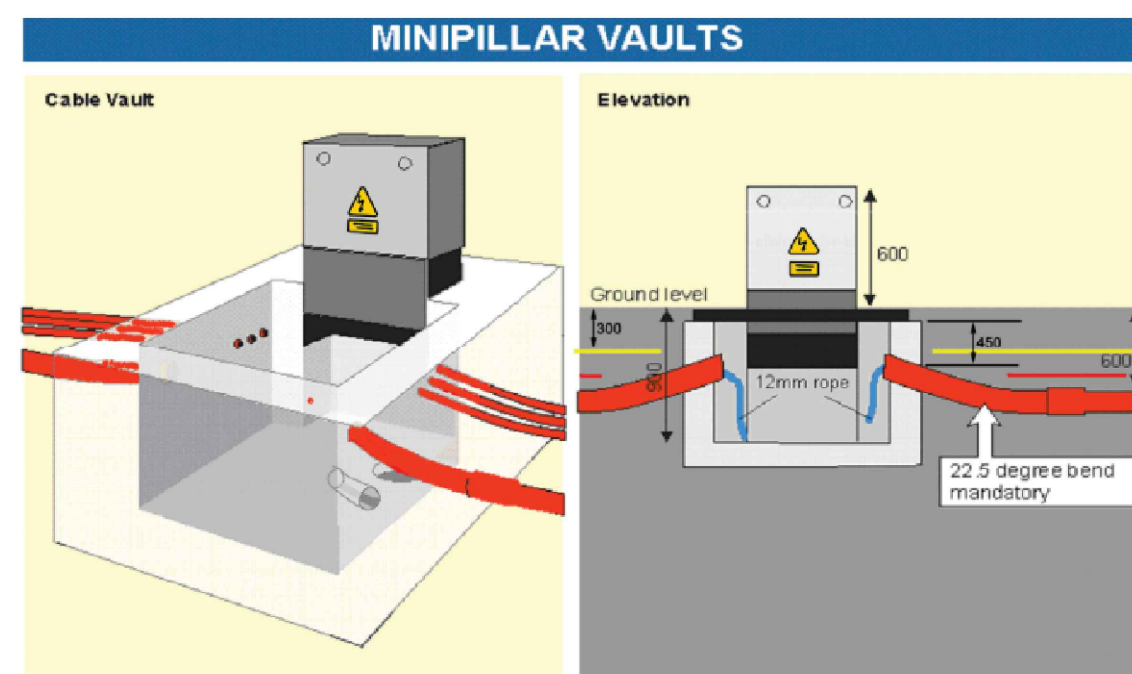
DETAIL No.1
TYPICAL DETAIL OF INCOMING TELECOM PROVIDER
TYPE 'A' MANHOLES LAYOUT
SCALE: 1:25



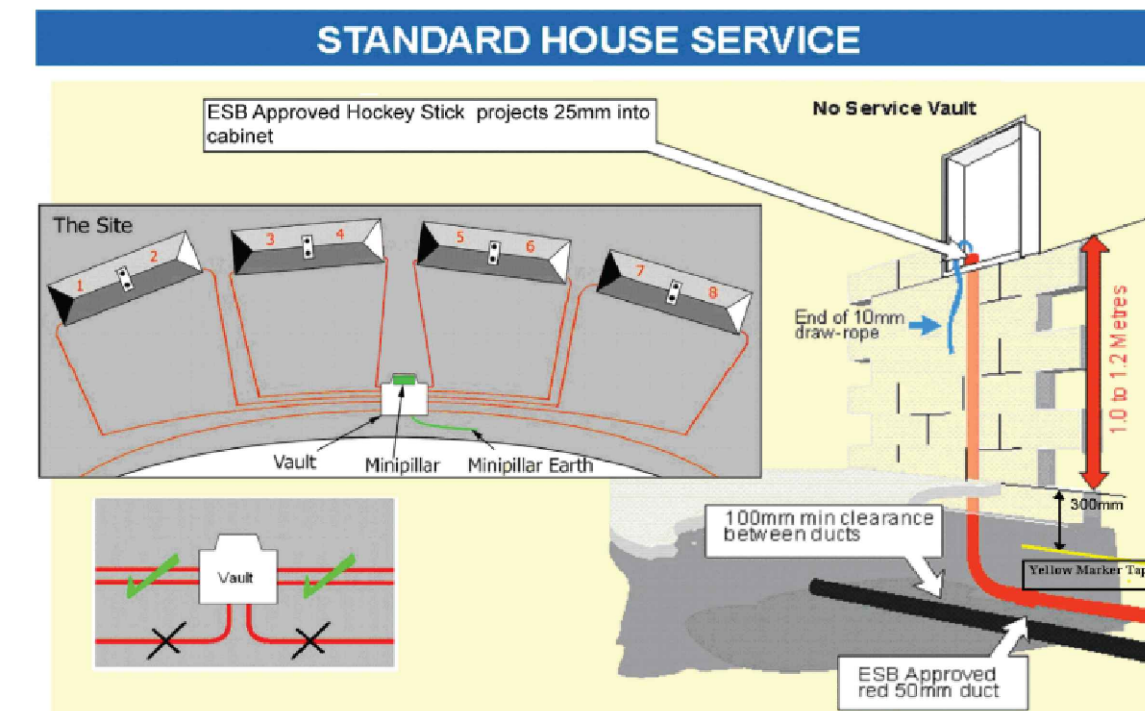
DETAIL No.2
ESB STANDARD DUCTING DETAIL
SCALE: N.T.S.



DETAIL No.3
ESB STANDARD DUCTING DETAIL
SCALE: N.T.S.



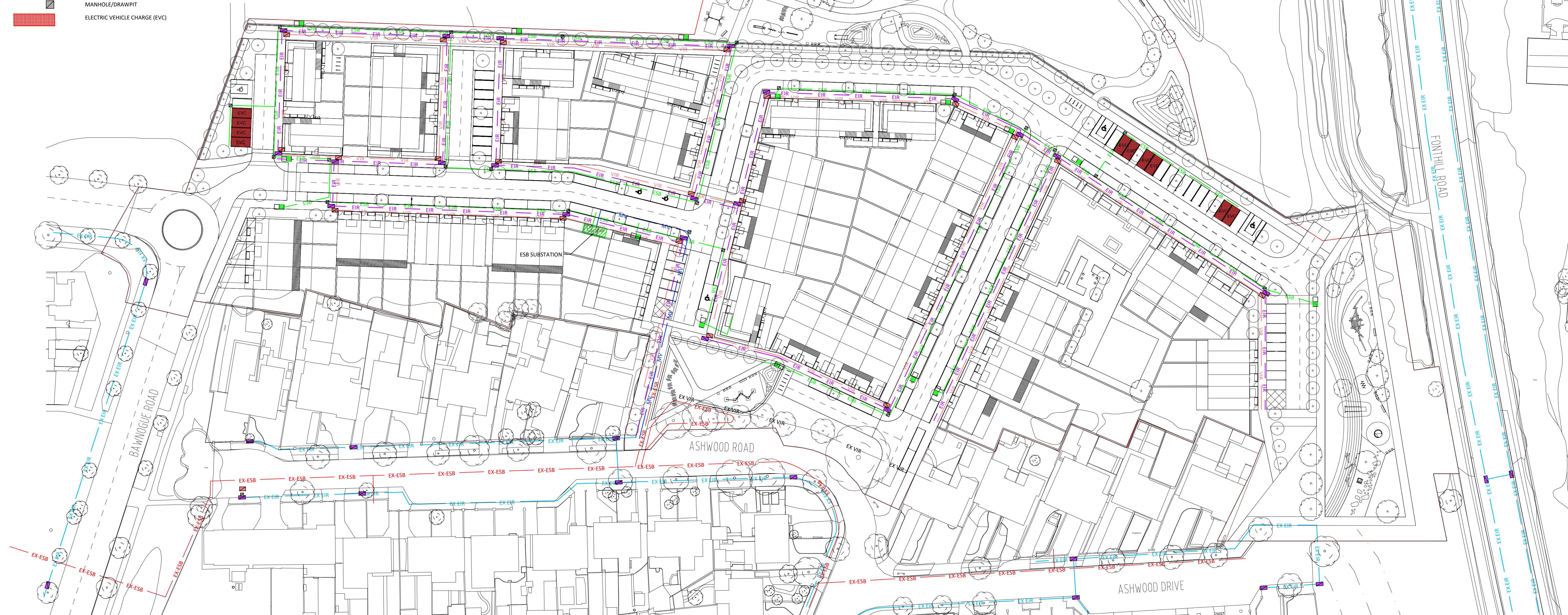
DETAIL No.4
ESB STANDARD MINI PILLARS CONCRETE VAULT DETAIL
SCALE: N.T.S.



DETAIL No.5
ESB STANDARD HOUSE SERVICE DETAIL
SCALE: N.T.S.

LEGEND OF SYMBOLS:

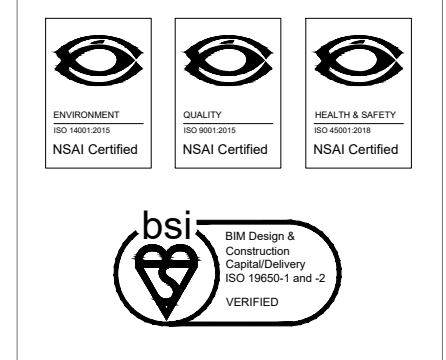
- MV 6No. 160mmØ MV DUCT
- ESB 4No. 125mmØ ESB DUCT
- EIR 2No. 100mmØ EIR DUCT
- VIR 2No. 100mmØ VIRGIN MEDIA DUCT
- EX-ESB EXISTING ESB DUCT
- EX-EIR EXISTING EIR DUCT
- EX-VIR EXISTING VIRGIN MEDIA DUCT
- ESB MINI PILLAR
- MANHOLE/DRAWPIT
- ELECTRIC VEHICLE CHARGE (EVC)



- FOR SETTING OUT REFER TO ARCHITECT'S DRAWINGS.
- THIS DRAWING IS TO BE READ IN CONJUNCTION WITH ALL OTHER ARCHITECTURAL AND ENGINEERING DRAWINGS AND ALL OTHER RELEVANT DRAWINGS AND SPECIFICATIONS.
- DO NOT SCALE THIS DRAWING. USE FIGURED DIMENSIONS ONLY.
- NO PART OF THIS DOCUMENT MAY BE REPRODUCED OR TRANSMITTED IN ANY FORM OR STORED IN ANY RETRIEVAL SYSTEM OF ANY NATURE WITHOUT THE WRITTEN PERMISSION OF O'CONNOR SUTTON CRONIN AS COPYRIGHT HOLDER EXCEPT AS AGREED FOR USE ON THE PROJECT FOR WHICH THE DOCUMENT WAS ORIGINALLY ISSUED.

Rev No.	Date	Revision Note	Drn by	Chkd by
P01	11.03.22	SUITABLE FOR STAGE APPROVAL.	I.F.	A.M.

Rev No.	Date	Revision Note	Drn by	Chkd by



Head Office,
9 Prussia Street,
Dublin 7,
D07 KT57

TEL +353 (0)1 8682000

e: contactus@ocsc.ie
w: www.ocsc.ie

Dublin | London | Belfast | Galway | Cork | Birmingham



Client: SOUTH DUBLIN COUNTY COUNCIL
Project: CANAL EXTENSION - CLONBURRIS

Title: ELECTRICAL SITE SERVICES LAYOUT

Code | Originator | Zone | Level | Type | Role | Number | Status | Revision
M1343 - OCSC - XX - XX - DR - E - 0001 | S4 | P01

Date: 22.12.21 Scale: 1:500 @ A1 Drn by: C.T. Chkd by: A.M. Aprvd by: M.F.