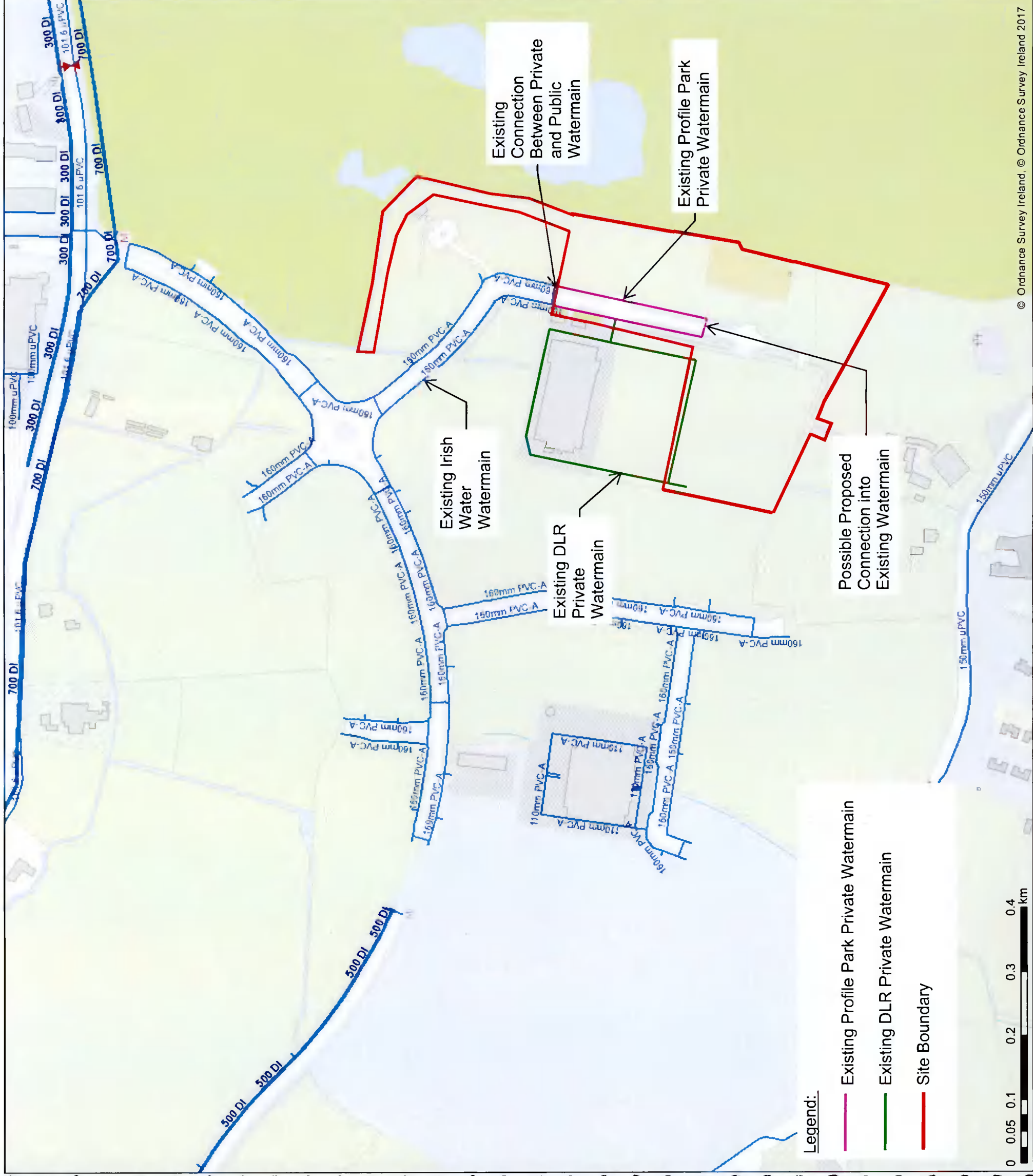


# Irish Water Web Map



© Ordnance Survey Ireland © Ordnance Survey Ireland 2017

Print Date: 20/05/2021

Printed by: Irish Water



1. No part of this drawing may be reproduced or transmitted in any form or stored in any retrieval system of any nature without the written permission of Irish Water as copyright holder or except as agreed for use on the project for which the document was originally issued.

2. Whilst every care has been taken in its compilation, Irish Water gives the information as to the position of its underground network as a general guide only on the strict understanding that it is based on the best available information provided by each Local Authority in Ireland to Irish Water. Irish Water can assume no responsibility for and give no guarantees, undertakings or warranties concerning the accuracy, completeness or up to date nature of the information provided and does not accept any liability whatsoever arising from any errors or omissions. This information should not be relied upon in the event of excavations or any other works being carried out in the vicinity of the Irish Water underground network. The onus is on the parties carrying out excavations or any other works to ensure the exact location of the Irish Water underground network is identified prior to excavations or any other works being carried out. Service connection pipes are not generally shown but their presence should be anticipated.

© Copyright Irish Water

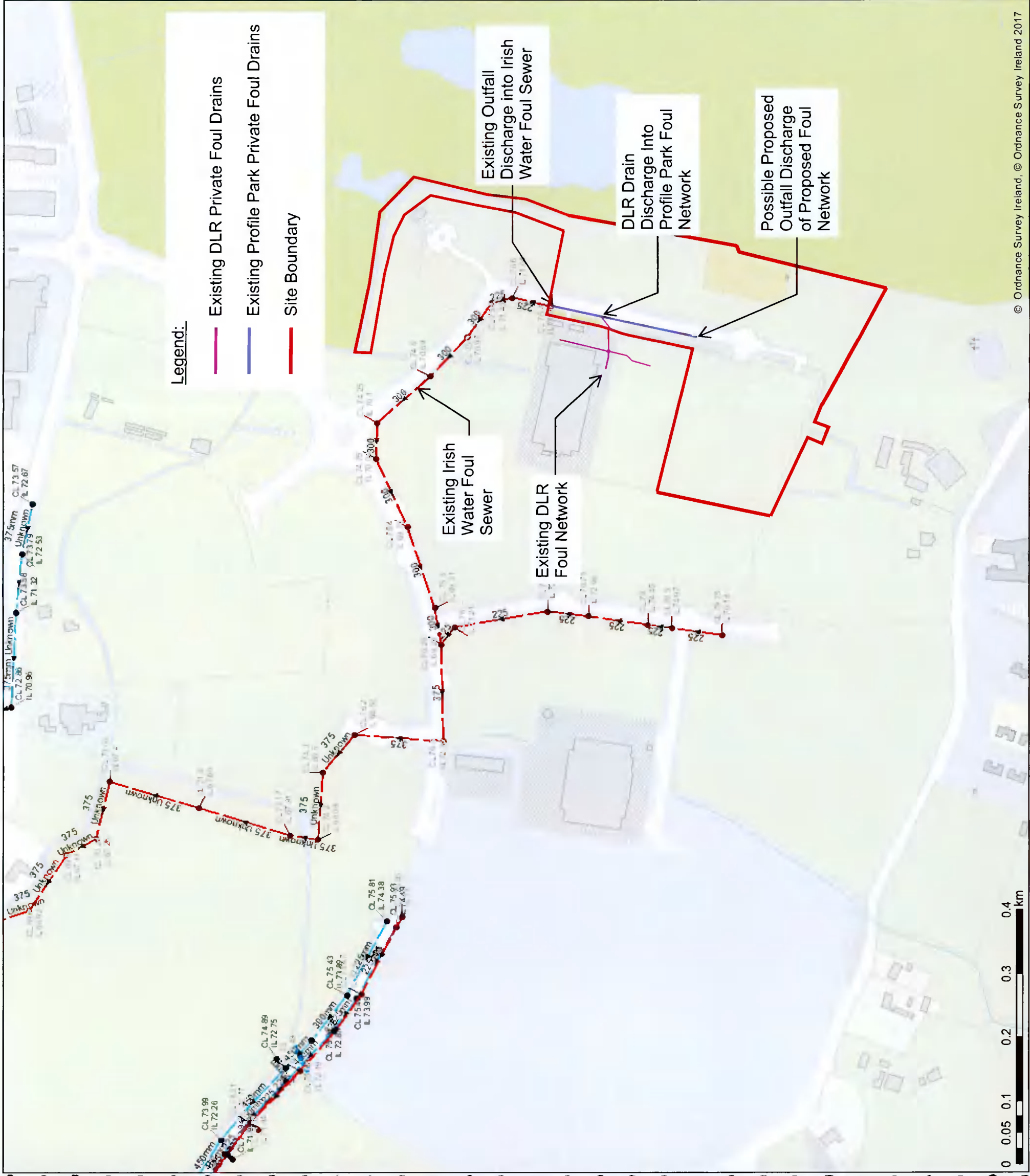
Reproduced from the Ordnance Survey Of Ireland by Permission of the Government.  
License No. 3-3-34

Gas Networks Ireland (GNI), their affiliates and assigns, accept no responsibility for any information contained in this document concerning location and technical design of the gas distribution and transmission network ("the Information"). Any representations and warranties express or implied, are excluded to the fullest extent permitted by law. No liability shall be accepted for any loss or damage, including, without limitation, direct, indirect, special, incidental, punitive or consequential loss, including loss of profits, arising out of or in connection with the use of the information (including maps or mapping data).

NOTE: DIAL BEFORE YOU DIG Phone: 1850 427 747 or e-mail dig@gasnetworks.ie. The actual position of the gas/electricity distribution and transmission network must be verified on site before any mechanical excavating takes place. If any mechanical excavation is proposed, hard copy maps must be requested from GNI re gas. All work in the vicinity of gas distribution and transmission network must be completed in accordance with the current edition of the Health & Safety Authority publication, "Code of Practice For Avoiding Danger From Underground Services", which is available from the Health and Safety Authority (1890 28 93 89) or can be downloaded free of charge at [www.hsa.ie](http://www.hsa.ie).

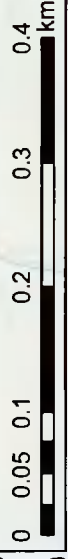
Water Distribution Networks	Storm Water Networks	Water Distribution Networks	Storm Water Networks
Water Treatment Plant	Surface Gravity Mains	Water Treatment Plant	Surface Gravity Mains
Water Pump Station	Surface Gravity Mains Private	Waste Water Treatment Plant	Surface Gravity Mains Private
Storage Cell/Tower	Surface Water Pressurised Mains	Waste Water Pump Station	Surface Water Pressurised Mains Private
Dosing Point	Inlet Type	Gravily - Combined	Grully
Meter Station	Standard	Gravily - Unknown	Other Unknown
Abstraction Point	Storm Manholes	Pumping - Combined	Standard
Reservoir	Standard	Pumping - Foul	Storm Manholes
Raw Water	Backlog	Pumping - Unknown	Backlog
Water Distribution Mains	Cascade	Syphon - Combined	Cascade
Private	Catchpit	Syphon - Foul	Catchpit
Trunk Water Mains	Overflow	Other Unknown	Overflow
Irish Water	Other Unknown	Water Mains Private	Other Unknown
Private	Storm Clean Outs	Gravily - Combined	Storm Clean Outs
Water Lateral Lines	Stormwater Chambers	Gravily - Foul	Stormwater Chambers
Irish Water	Discharge Type	Pumping - Unknown	Outfall
Non IW	Outfall	Pumping - Foul	Overflow
Water Clean Outs	Soakaway	Syphon - Unknown	Soakaway
Water Abandoned Lines	Other Unknown	Syphon - Combined	Other Unknown
Boundary Meter	Stormwater	Other Unknown	Stormwater
Bulk/Check Meter	Stormwater	Stormwater	Stormwater
Group Scheme	Stormwater	Stormwater	Stormwater
Source Meter	Stormwater	Stormwater	Stormwater
Waste Meter	Stormwater	Stormwater	Stormwater
Unknown Meter - Other Meter	Stormwater	Stormwater	Stormwater
Non-Return	Stormwater	Stormwater	Stormwater
PRV	Stormwater	Stormwater	Stormwater
PSV	Stormwater	Stormwater	Stormwater
Swage Line Valve Open/Closed	Stormwater	Stormwater	Stormwater
Butterfly Line Valve Open/Closed	Stormwater	Stormwater	Stormwater
Swage Boundary Valve Open/Closed	Stormwater	Stormwater	Stormwater
Butterfly Boundary Valve Open/Closed	Stormwater	Stormwater	Stormwater
Scour Valves	Stormwater	Stormwater	Stormwater
Single Air Control Valve	Stormwater	Stormwater	Stormwater
Double Air Control Valve	Stormwater	Stormwater	Stormwater
Water Stop Valves	Stormwater	Stormwater	Stormwater
Water Service Connections	Stormwater	Stormwater	Stormwater
Water Distributor Chambers	Stormwater	Stormwater	Stormwater
Water Network Junctions	Stormwater	Stormwater	Stormwater
Pressure Monitoring Point	Stormwater	Stormwater	Stormwater
Fire Hydrant	Stormwater	Stormwater	Stormwater
Fire Hydrant/Washout	Stormwater	Stormwater	Stormwater
Water Fittings	Stormwater	Stormwater	Stormwater
LI Cap	Stormwater	Stormwater	Stormwater
Reducer	Stormwater	Stormwater	Stormwater
Tap	Stormwater	Stormwater	Stormwater
Other Fittings	Stormwater	Stormwater	Stormwater

# Irish Water Web Map



**Legend:**

- Existing DLR Private Foul Drains
- Existing Profile Park Private Foul Drains
- - - Site Boundary



Print Date: 20/05/2021

Printed by: Irish Water

1. No part of this drawing may be reproduced or transmitted in any form or stored in any retrieval system of any nature without the written permission of Irish Water copyright holder except as agreed for use on the project for which the document was originally issued.

2. Whilst every care has been taken in its compilation, Irish Water gives the information as to the position of its underground network as a general guide only on the strict understanding that it is based on the best available information provided by each Local Authority in Ireland to Irish Water. Irish Water can assume no responsibility for and give no guarantees, undertakings or warranties concerning the accuracy, completeness or up to date nature of the information provided and does not accept any liability whatsoever arising from any errors or omissions. This information should not be relied upon in the event of excavations or any other works being carried out in the vicinity of the Irish Water underground network. The onus is on the parties carrying out excavations or any other works to ensure the exact location of the Irish Water underground network is identified prior to excavations or any other works being carried out. Service connection pipes are not generally shown but their presence should be anticipated.

© Copyright: Irish Water

Reproduced from the Ordnance Survey of Ireland by Permission of the Government.  
License No. 3-3-34

Gas Networks Ireland (GNI), their affiliates and assigns, accept no responsibility for any information contained in this document concerning location and technical designation of the gas distribution and transmission network ("the Information"). Any representations and warranties expressed or implied, are excluded to the fullest extent permitted by law. No liability shall be accepted for any loss or damage, including, without limitation, direct, indirect, special, incidental, punitive or consequential loss, including loss of profits, arising out of or in connection with the use of the information (including maps or mapping data).

NOTE: DIAL BEFORE YOU DIG Phone: 1850 427 747 or e-mail [dig@gasnetworks.ie](mailto:dig@gasnetworks.ie). The actual position of the gas/electricity distribution and transmission network must be verified on site before any mechanical excavating/lakes place. If any mechanical excavation is proposed, hard copy maps must be requested from GNI maps. All work in the vicinity of gas distribution and transmission network must be completed in accordance with the current edition of the Health & Safety Authority publication, "Code of Practice For Avoiding Danger From Underground Services", which is available from the Health and Safety Authority (1890 28 93 89) or can be downloaded free of charge at [www.hsa.ie](http://www.hsa.ie).

<b>Water Distribution Methods</b> Water Treatment Plant Water Pump Station Storage Cell/Tower Dosing Point Meter Station Abstraction Point Telemetry Kiosk Reservoir Possible Raw Water Water Distribution Mains Private Trunk Water Mains Irish Water Private Water Lateral Lines Irish Water Non IW Water Casings Water Abandoned Lines Boundary Meter Bulk/Check Meter M Group Scheme Source Meter Waste Meter Non-Return PRV PSV Sluice Valve Open/Closed Butterfly/Lens Valve Open/Closed Butterfly Boundary Valve Open/Closed	<b>Sewer Foul Combined Methods</b> Waste Water Treatment Plant Waste Water Pump Station <b>Sewer Mains Irish Water</b> Gravity - Foul Gravity - Unknown Pumping - Combined Pumping - Foul Pumping - Unknown Siphon - Combined Siphon - Foul Overflow <b>Sewer Mains Private</b> Gravity - Combined Gravity - Foul Pumping - Combined Pumping - Unknown Pumping - Foul Siphon - Combined Siphon - Foul Overflow	<b>Storm Water Networks</b> Surface Water Mains Surface Gravit Mains Surface Gravit Mains Private Surface Water Pressurised Mains Surface Water Pressurised Mains Private Inlet Type Standard Other Unknown Storm Manholes Standard Backdrop Cascade Catchpit Bifurcation Lamphole Hydrobrake Other Unknown Storm Cleanouts Stormwater Chambers Discharge Type Outfall Overflow Soakaway Other Unknown Gas Networks Ireland Transmission High Pressure Gasline Distribution Medium Pressure Gasline Distribution Low Pressure Gasline ESB Networks ESB HV Lines HV Underground HV Overhead HV Abandoned ESB MV LV Lines MV Overhead Three Phase MV Overhead Single Phase LV Overhead Three Phase LV Overhead Single Phase MV LV Underground Abandoned Proposed Non-Service Categories Under Construction Out of Service Decommissioned Water Non-Service Assets Water Point Feature Water Pipe Water Structure Waste Non-Service Assets Waste Point Feature Sewer Waste Structure
--	--	--