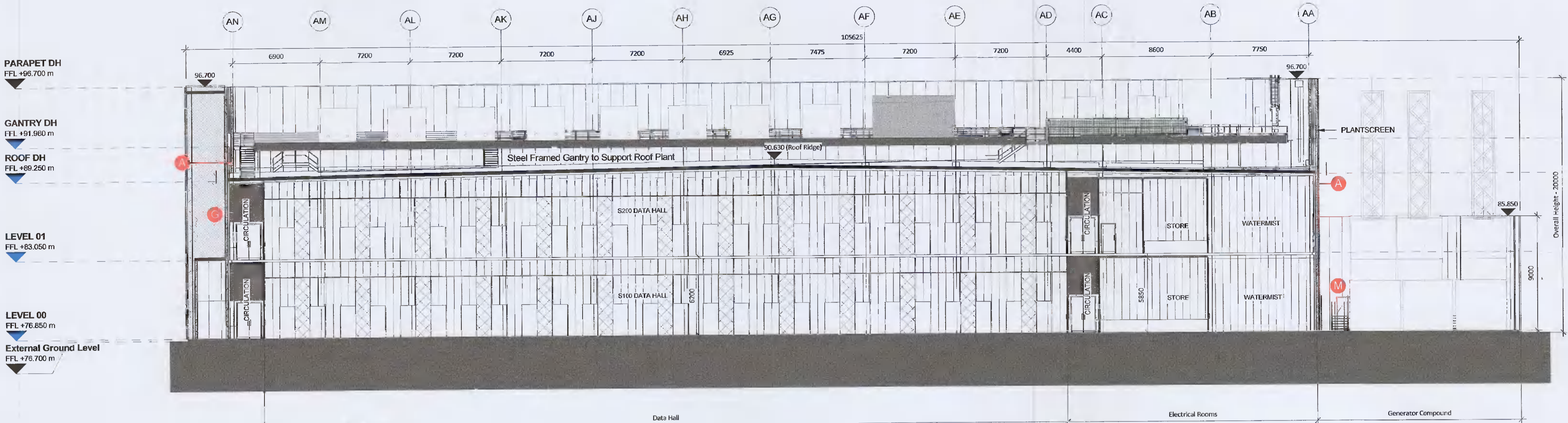


All dimensions to be checked on site. Figure dimensions take precedence over scaled dimensions. Any errors or discrepancies to be reported to the Architect. This drawing may not be edited or modified by the recipient.

Copyright and ownership of this drawing is vested in RKD Architects, whose prior written consent is required for reuse, reproduction or for publication to any third party. All rights reserved by the law of copyright and by international copyright conventions are reserved to RKD Architects and may be protected by court proceedings for damages and/or injunctions and costs.

RKD Architects' Quality Management Systems are certified to ISO 9001:2015.

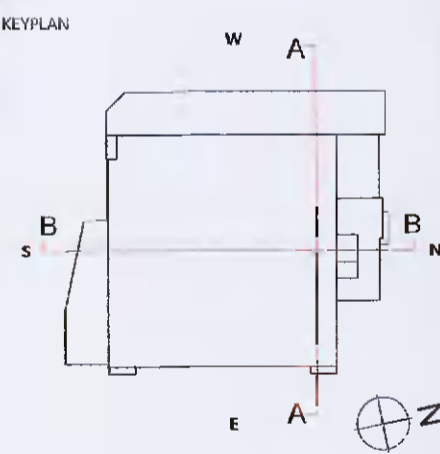


**1 05010 DUB15 - Section AA**  
1 : 200

**Green Roof Legend:**  
 Proposed Extensive Green Roofing Area



**2 05010 DUB15 - Section BB**  
1 : 200



**EXTERNAL CLADDING / FINISHES LEGEND:**

- |   |   |   |   |   |   |  |
|---|---|---|---|---|---|--|
| <b>A</b> EUROBOND EUROPANEL POWDER COATED VERTICAL FLAT METAL CLADDING, ALTERNATING PANELS OF VARIOUS WIDTHS - MERLIN GREY AND ALBATROSS GREY | <b>E</b> EUROBOND ROCKSPAN POWDER COATED HORIZONTAL PROFILED METAL CLADDING PANEL TYPE E - DARK GREY        | <b>I</b> 50% OPEN AREA WEATHERED LOUVER - MERLIN GREY | <b>M</b> SERVICE / ESCAPE DOOR - GREY COLOUR TO MATCH CLADDING  | <b>S</b> SPRINKLER TANK                                     | <b>T</b> EXTERNAL ALUMINIUM DOOR - COLOUR TBC | <b>X</b> LIVING GREEN WALL - ROPE TRELLIS SYSTEM   |
| <b>B</b> EUROBOND ROCKSPAN POWDER COATED VERTICAL FLAT METAL CLADDING PANEL TYPE B - PEARL (RAL_9010)   | <b>F</b> EUROBOND EUROPANEL POWDER COATED FLAT METAL CLADDING PLANT SCREEN - MERLIN GREY AND ALBATROSS GREY | <b>J</b> CURTAIN WALLING - GLAZING                    | <b>N</b> LOADING BAY ROLLER SHUTTER - GREY COLOUR TO MATCH CLADDING   | <b>V</b> RAINWATER PIPE - COLOUR TBC                        | <b>Y</b> PRESSED METAL MAIN ENTRANCE FEATURE  | <b>A2</b> EUROBOND EUROPANEL POWDER COATED VERTICAL FLAT METAL CLADDING PANEL TYPE A - MERLIN GREY - REMOVABLE |
| <b>C</b> EUROBOND ROCKSPAN POWDER COATED HORIZONTAL FLAT METAL CLADDING PANEL TYPE C - MOONSTONE (RAL_7035)                                   | <b>G</b> PERFORATED METAL SCREEN TO BE POWDER COATED ALUMINIUM - MERLIN GREY                                | <b>K</b> CURTAIN WALLING - OPAQUE GLAZED SPANDREL     | <b>O</b> GENERATOR FLUES FINISHED IN STEEL. FLUE SUPPORT FINISHED IN LIGHT GREY PAINT ON STRUCTURAL STEEL FRAME | <b>W</b> PRESSED ALUMINIUM PARAPET CAPPING TO SELECT COLOUR | <b>D</b> DIESEL TANK                          |  |
| <b>D</b> EUROBOND ROCKSPAN POWDER COATED HORIZONTAL FLAT METAL CLADDING PANEL TYPE D - PIGEON BLUE (RAL_5014)                                 | <b>H</b> METAL ACOUSTIC PLANT SCREEN LOUVER TO BE POWDER COATED ALUMINIUM - MERLIN GREY                     | <b>L</b> LIVING GREEN WALL - MODULAR SYSTEM           | <b>P</b> BITUMEN ROOFING MEMBRANE ON AQUAPANEL ON 190mm ROCKWOOL INSULATION                                     | <b>R</b> ROOF ACCESS LADDER                                 |   |  |

| Rev. | Date       | Description                    |
|------|------------|--------------------------------|
| B    | 2022/02/02 | Further Information Submission |
| A    | 2021/07/28 | Planning Issue                 |

|                 |  |       |     |    |
|-----------------|--|-------|-----|----|
| WORKSTAGE       | WORKSTAGE NAME                                   |       |     |    |
| PROJECT         | INXN DUB15 & DUB16                               |       |     |    |
| PROJECT ADDRESS | Profile Park, Nangor Road, Clondalkin, Dublin 22 |       |     |    |
| DWG TITLE       | DUB15 Proposed Building Sections                 |       |     |    |
| DWG NO          | IE-DUB15-DTZZ-ZZ-RKD-SE-A-05010                  |       |     |    |
| REV             | PROJECT NO                                       | SCALE |     |    |
| B               | 20245  | 1:200 |     |    |
| DATE            | ERN  | SL    | CHK | MK |
| 28/06/2021      |  |       |     |    |

